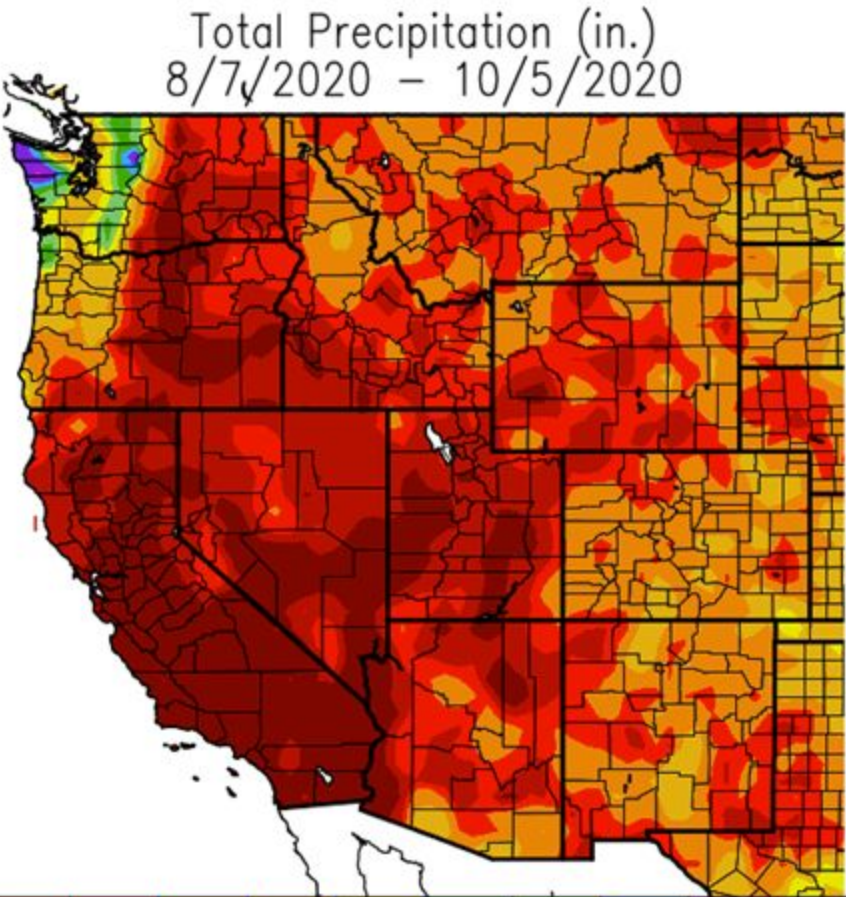




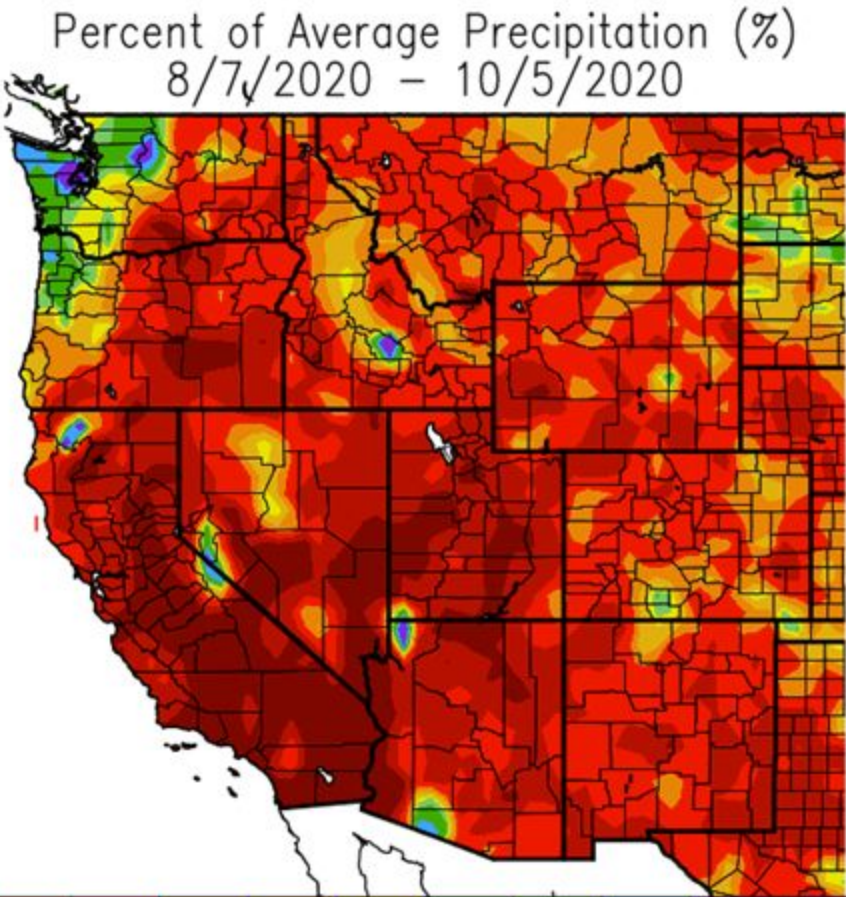
Utah Drought Monitor Webinar

October 6, 2020

Precipitation 60 day history (Percent of Average)

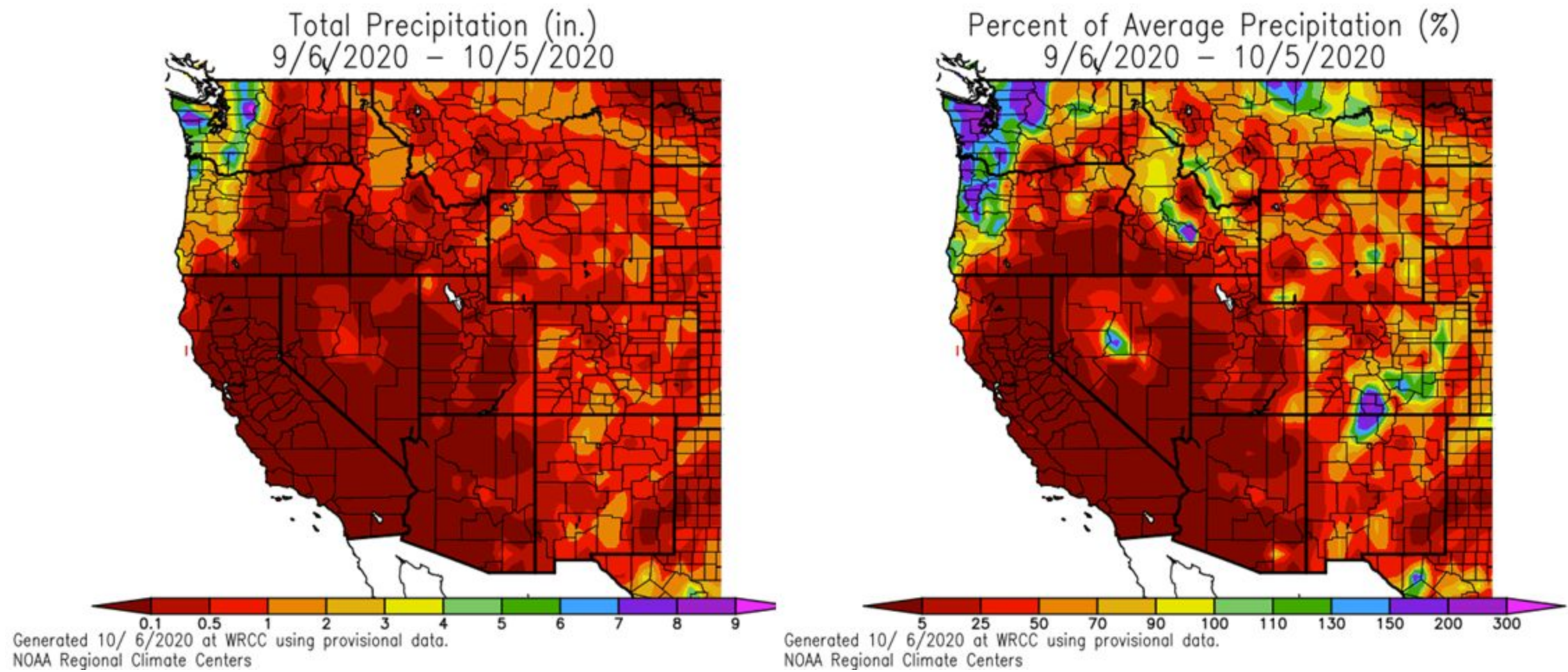


0.1 0.5 1 2 3.5 5 6.5 8 9.5 11 12.5
Generated 10/ 6/2020 at WRCC using provisional data.
NOAA Regional Climate Centers



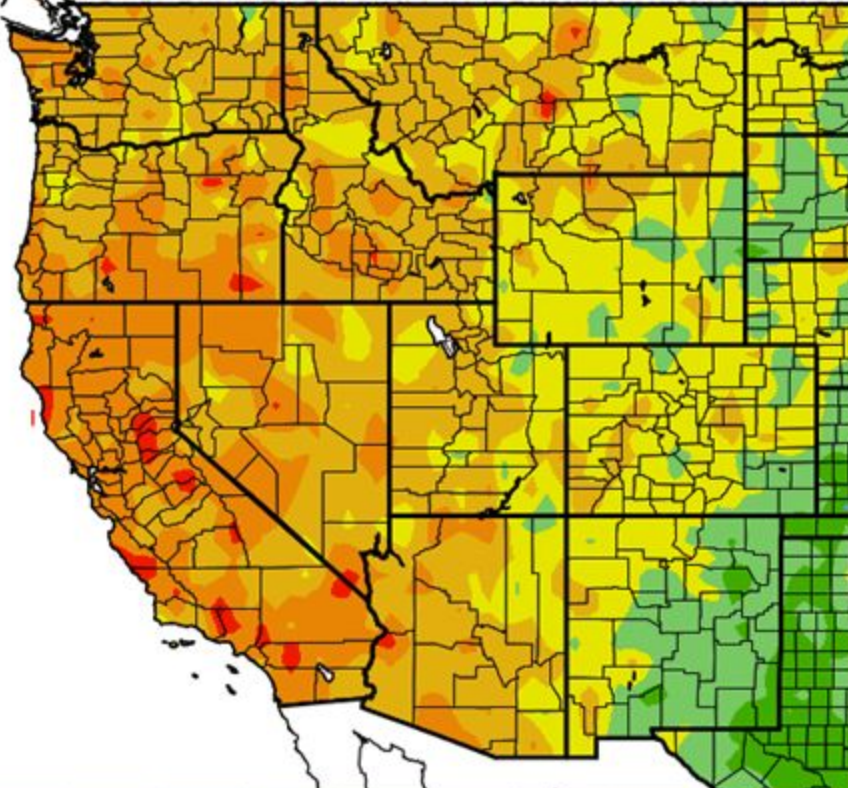
5 25 50 70 90 100 110 130 150 200 300
Generated 10/ 6/2020 at WRCC using provisional data.
NOAA Regional Climate Centers

Precipitation 30 day history (Percent of Average)



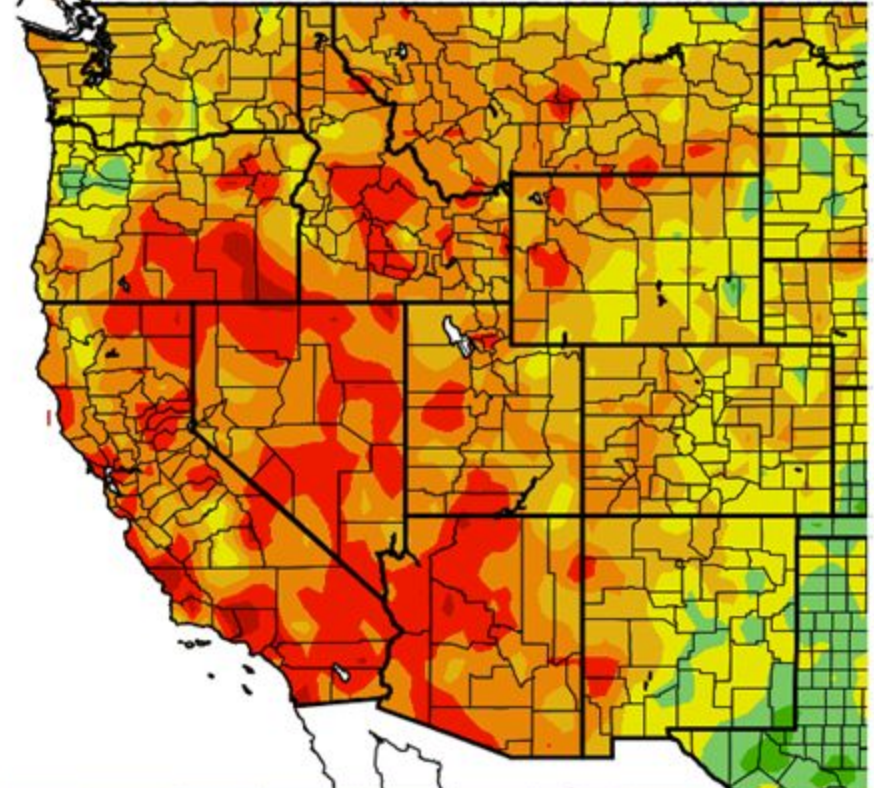
Temperature 30 day (Related to Average)

Ave. Temperature dep from Ave (deg F)
9/6/2020 – 10/5/2020



Generated 10/ 6/2020 at WRCC using provisional data.
NOAA Regional Climate Centers

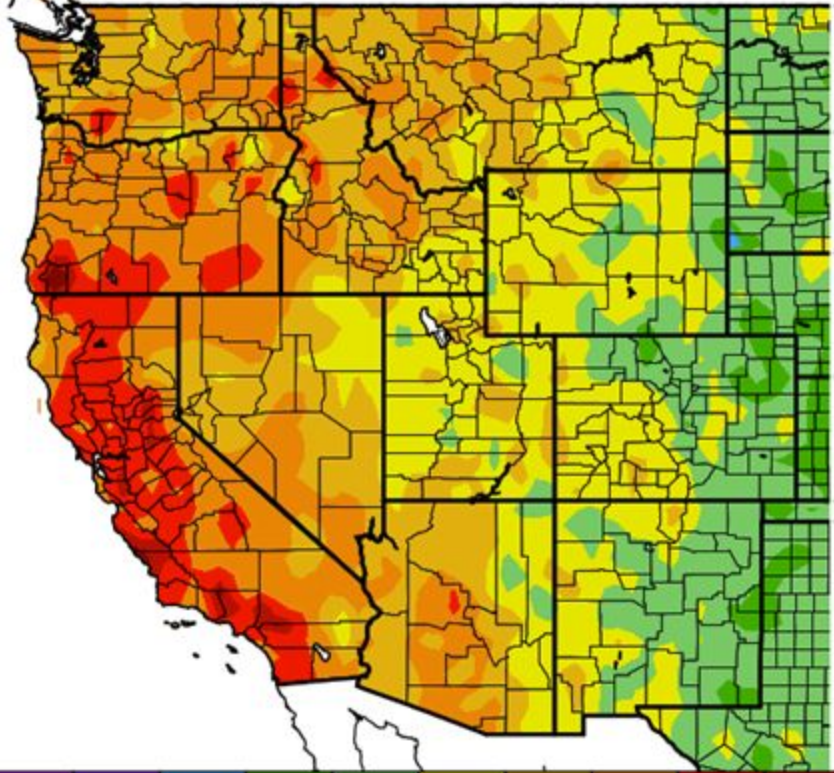
Av. Max. Temperature dep from Ave (deg F)
9/6/2020 – 10/5/2020



Generated 10/ 6/2020 at WRCC using provisional data.
NOAA Regional Climate Centers

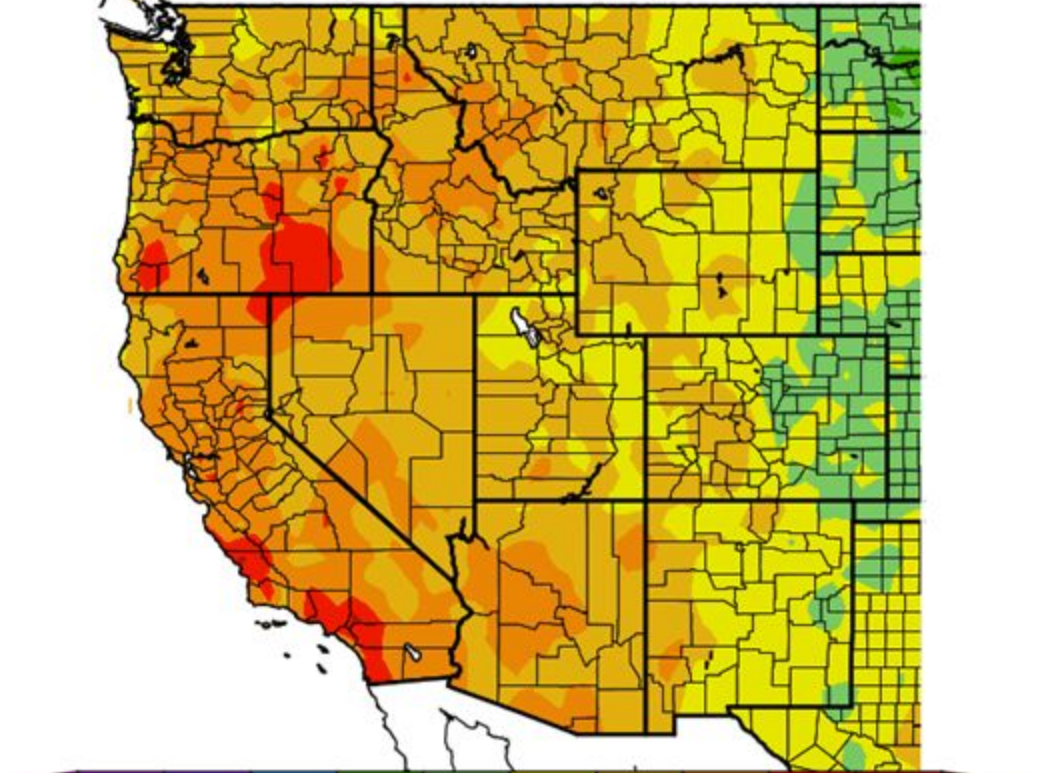
Temperature 7 day (Related to Average)

Ave. Temperature dep from Ave (deg F)
9/29/2020 – 10/5/2020



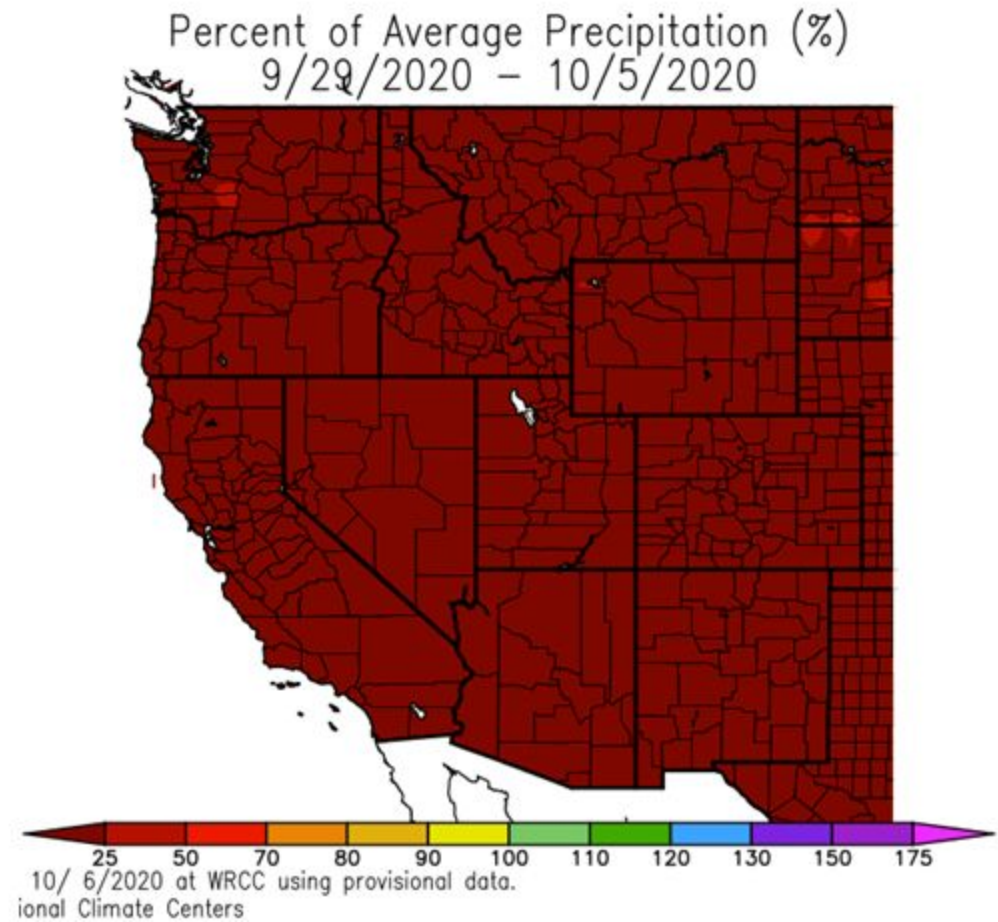
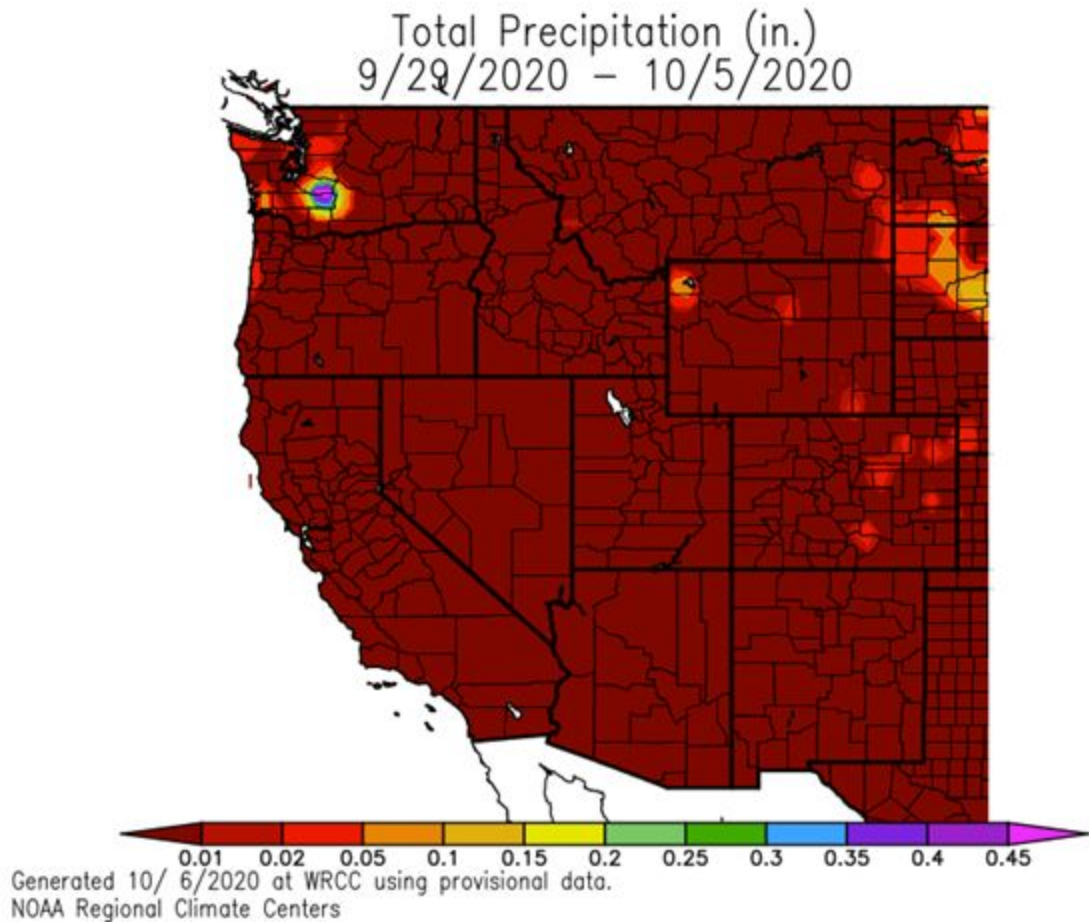
Generated 10/ 6/2020 at WRCC using provisional data.
NOAA Regional Climate Centers

Av. Max. Temperature dep from Ave (deg F)
9/29/2020 – 10/5/2020



Generated 10/ 6/2020 at WRCC using provisional data.
NOAA Regional Climate Centers

Precipitation 7 day history (Percent of Average)

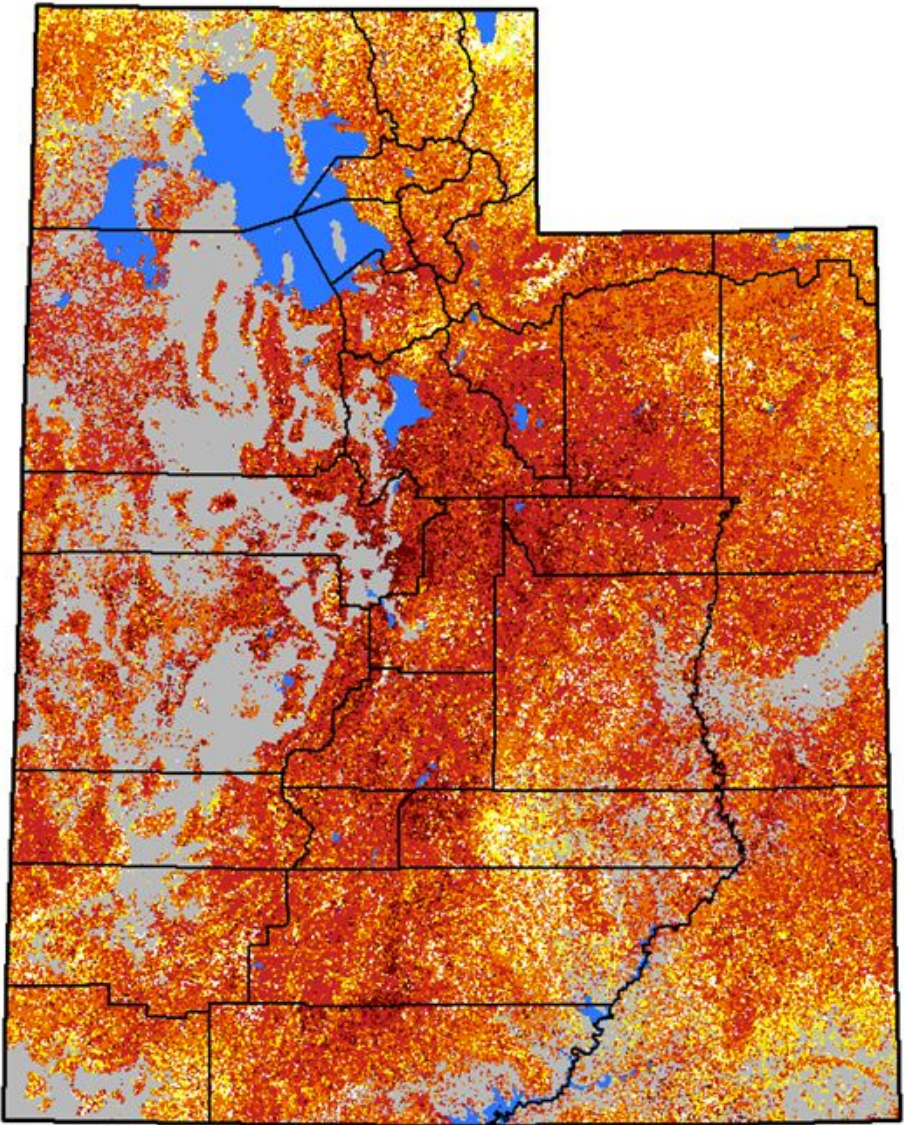
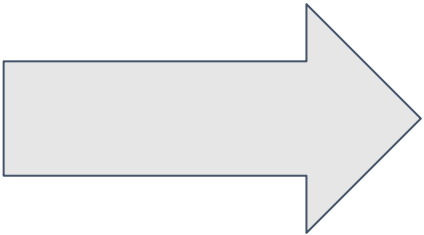
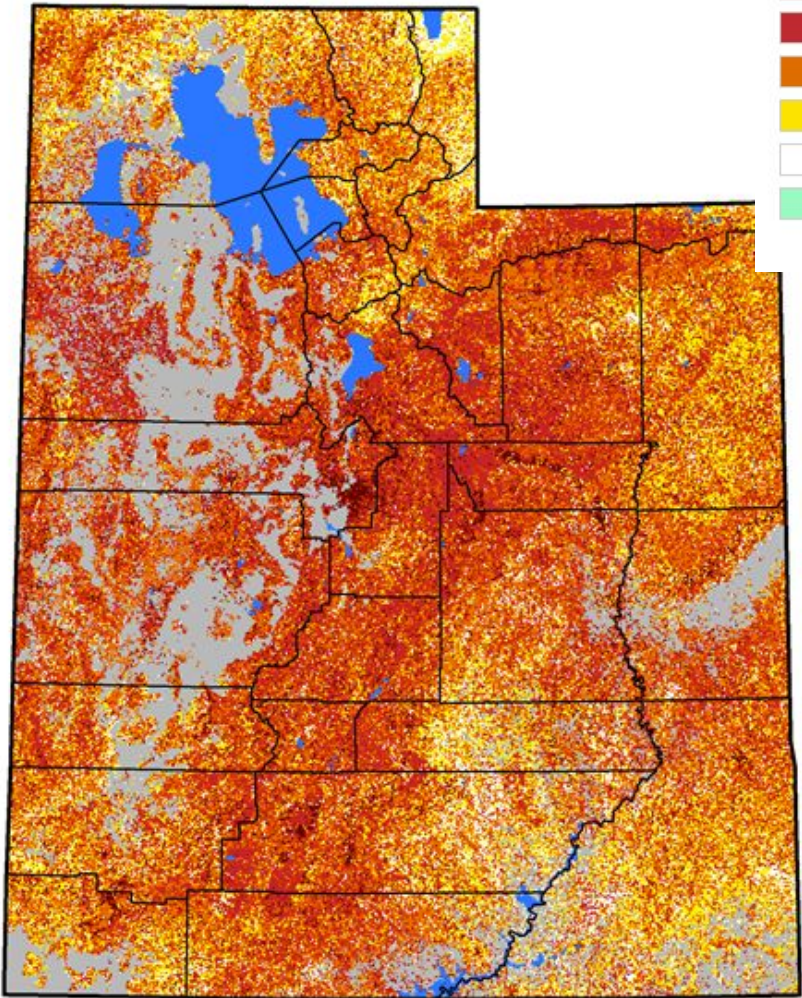


Vegetation Drought Response Index

Complete: Utah

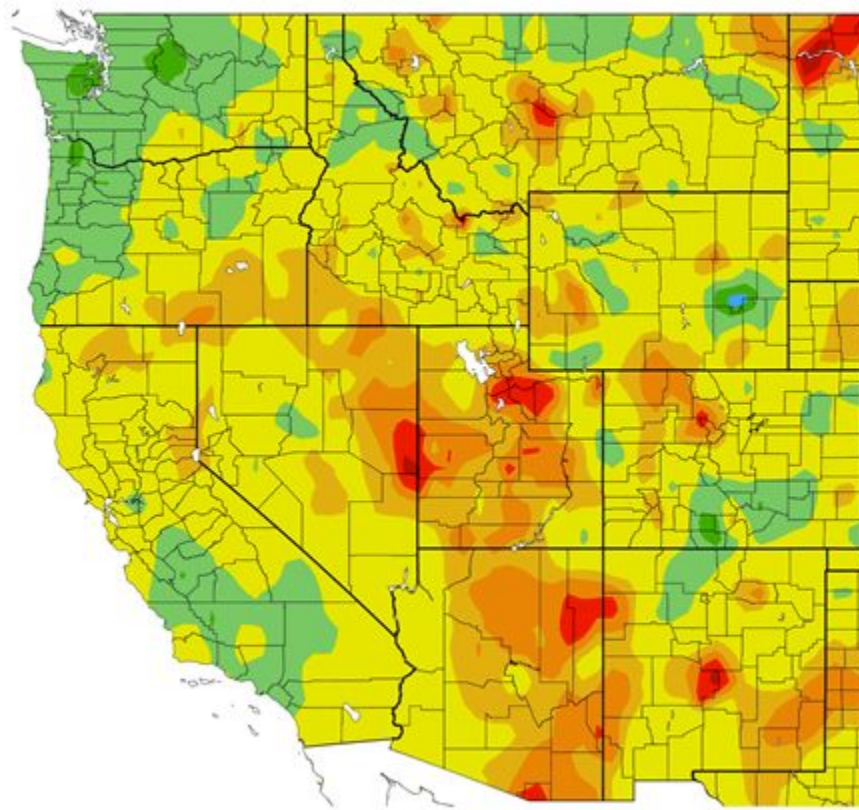
Vegetation Condition

- | | |
|--------------------|------------|
| Extreme Drought | Very Moist |
| Severe Drought | Extremely |
| Moderate Drought | Out of Sea |
| Pre-drought stress | Water |
| Near Normal | Other Land |
| Unusually Moist | |



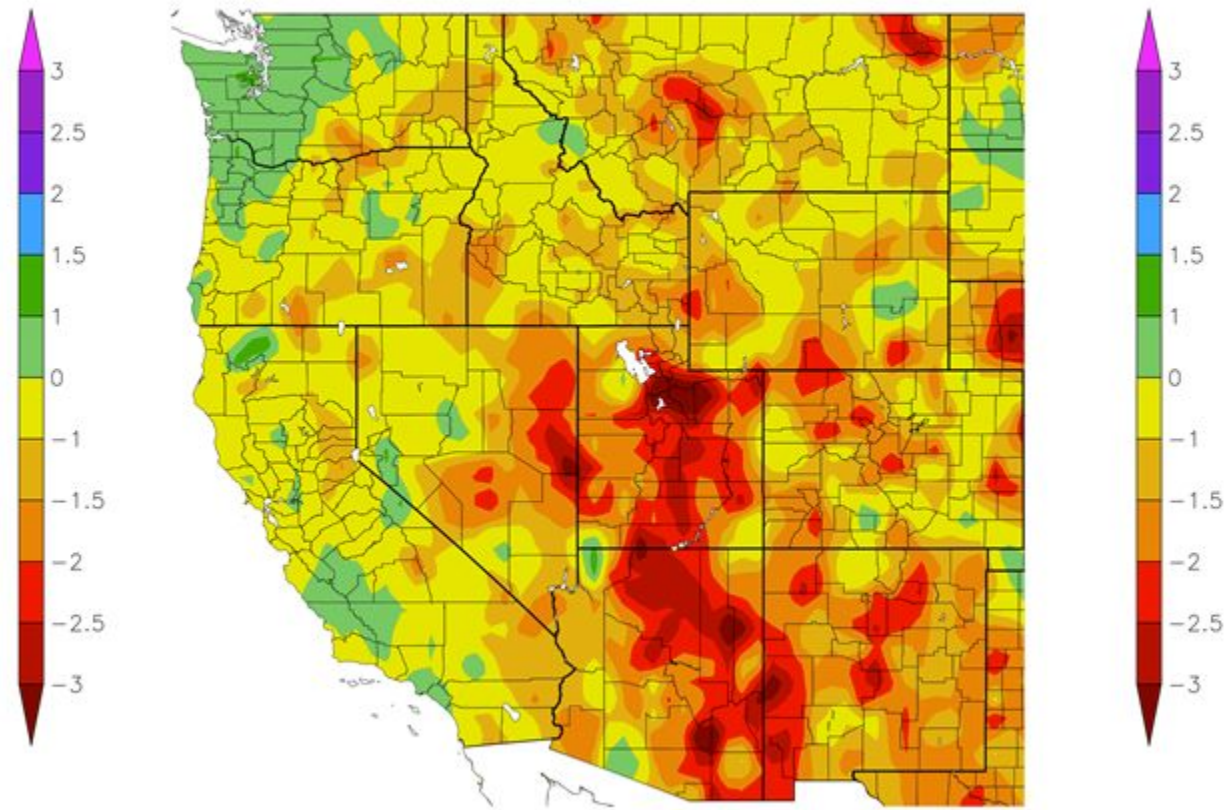
Standardized Precipitation Index

30 Day SPI
9/5/2020 – 10/4/2020



Generated 10/6/2020 at HPRCC using provisional data.

60 Day SPI
8/6/2020 – 10/4/2020



NOAA Regional Climate Centers 020 at HPRCC using provisional data.

NOAA Regional Climate Centers

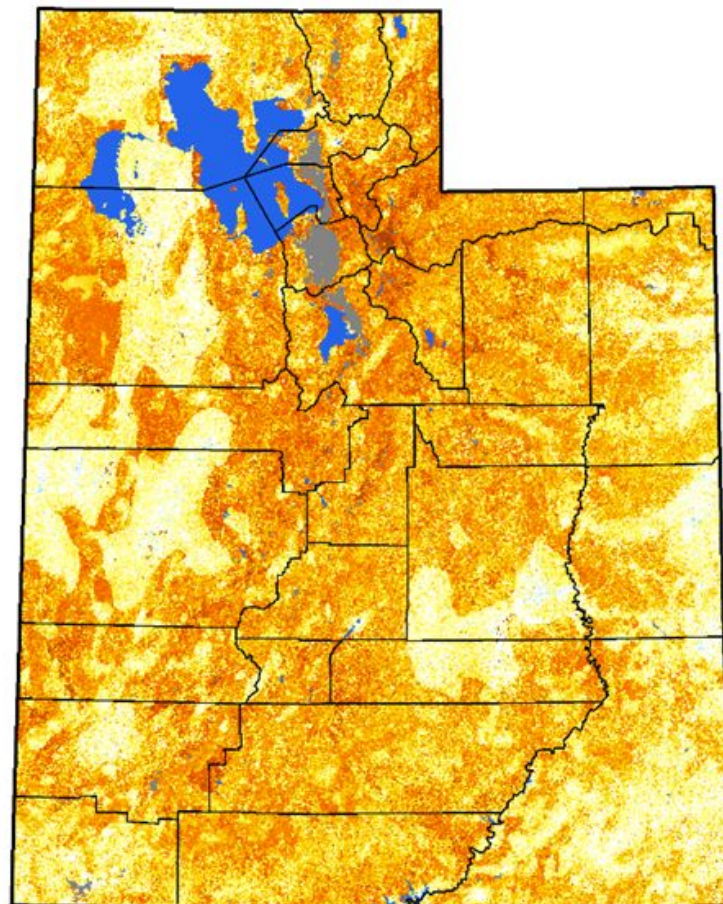
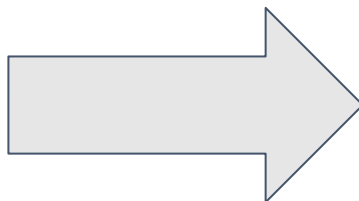
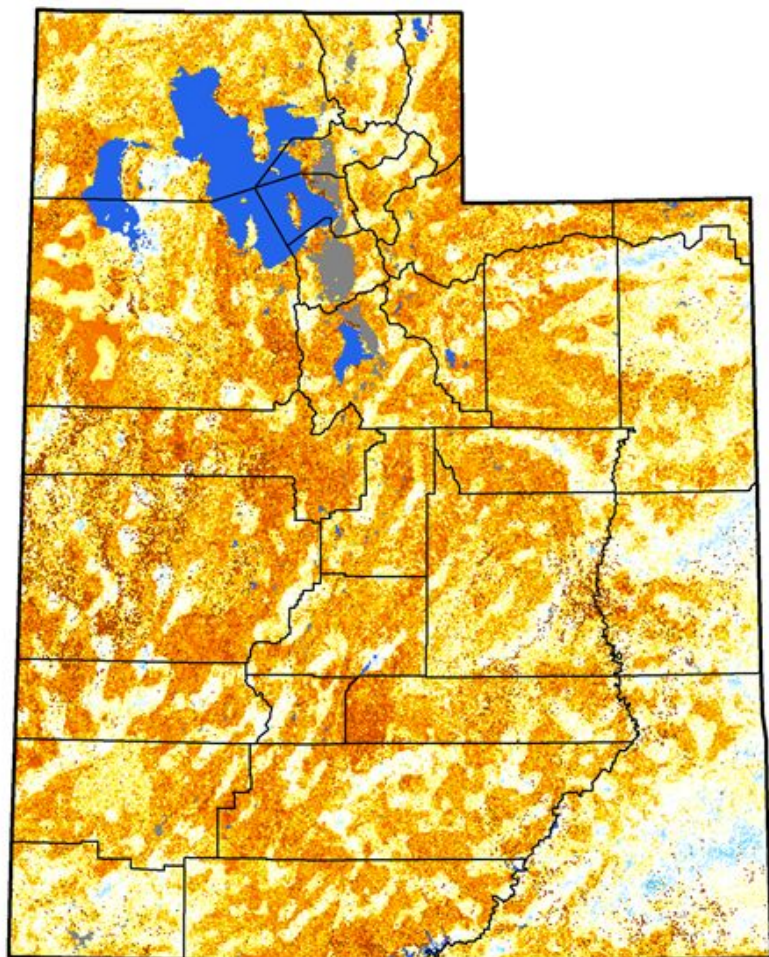
Quick Drought Response Index

Utah

Quick Drought Response Index

Utah

October 4, 2020
(Week 40)



Conditions Relative to
4-Week Historical Average

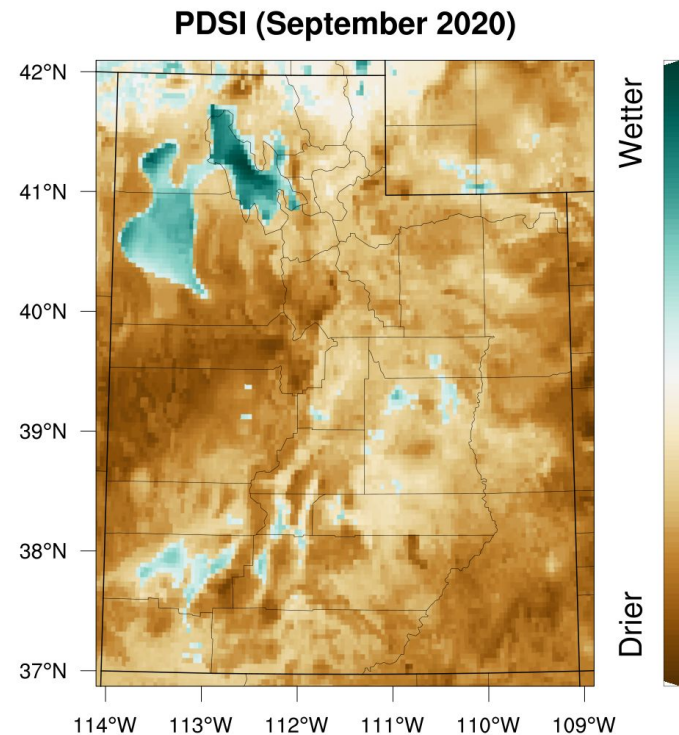
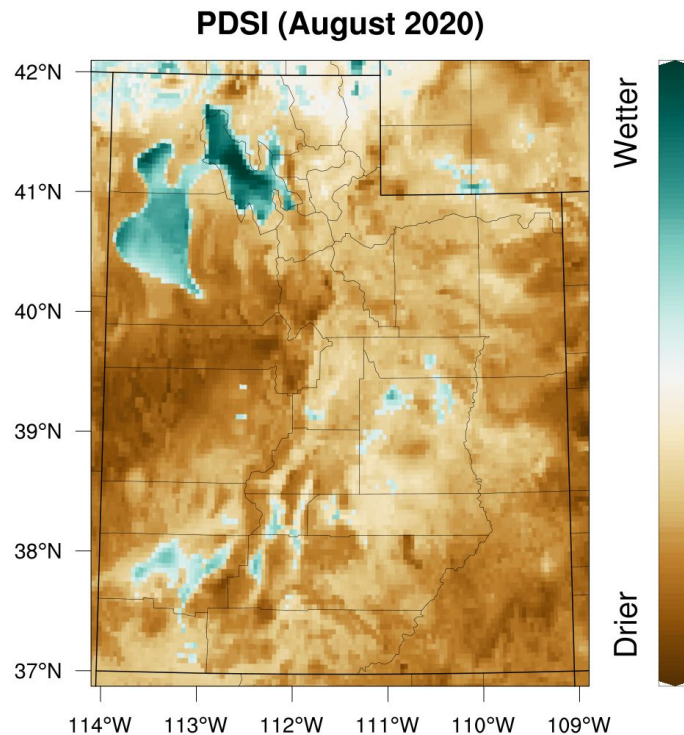


CALMIT
University of Nebraska - Lincoln
Center for Advanced Land Management Information Technologies



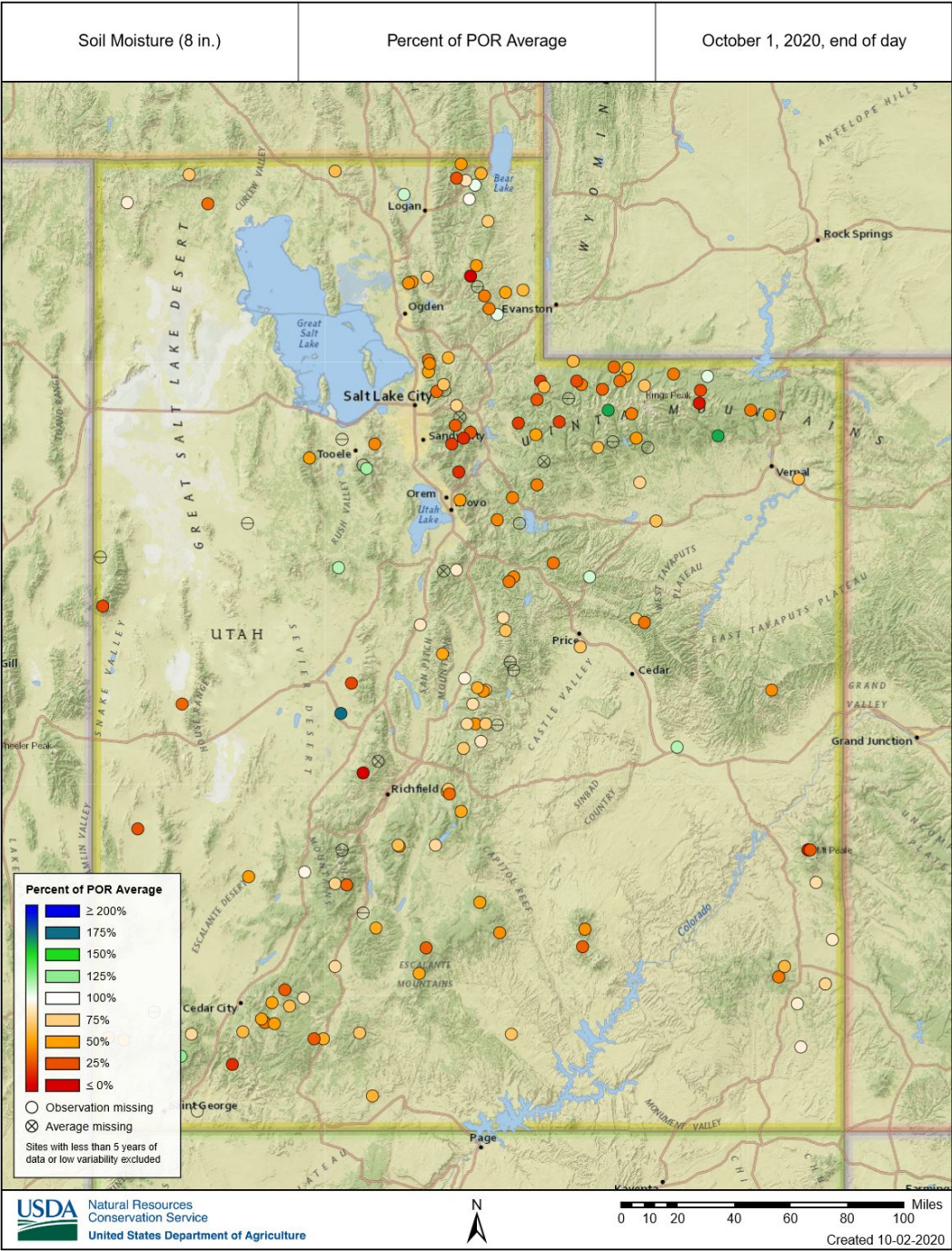
Palmer Drought Severity Index (PDSI):

- ****initial results from UCC project to calculate PDSI in-house.
- One of most predominant drought indices used.
- Temperature and precipitation data used to estimate relative dryness by incorporating a physical water balance model .
- Useful at capturing long-term drought conditions (timescales > 12 months)
- Not effective during snow-season (assumes precipitation is immediately available)

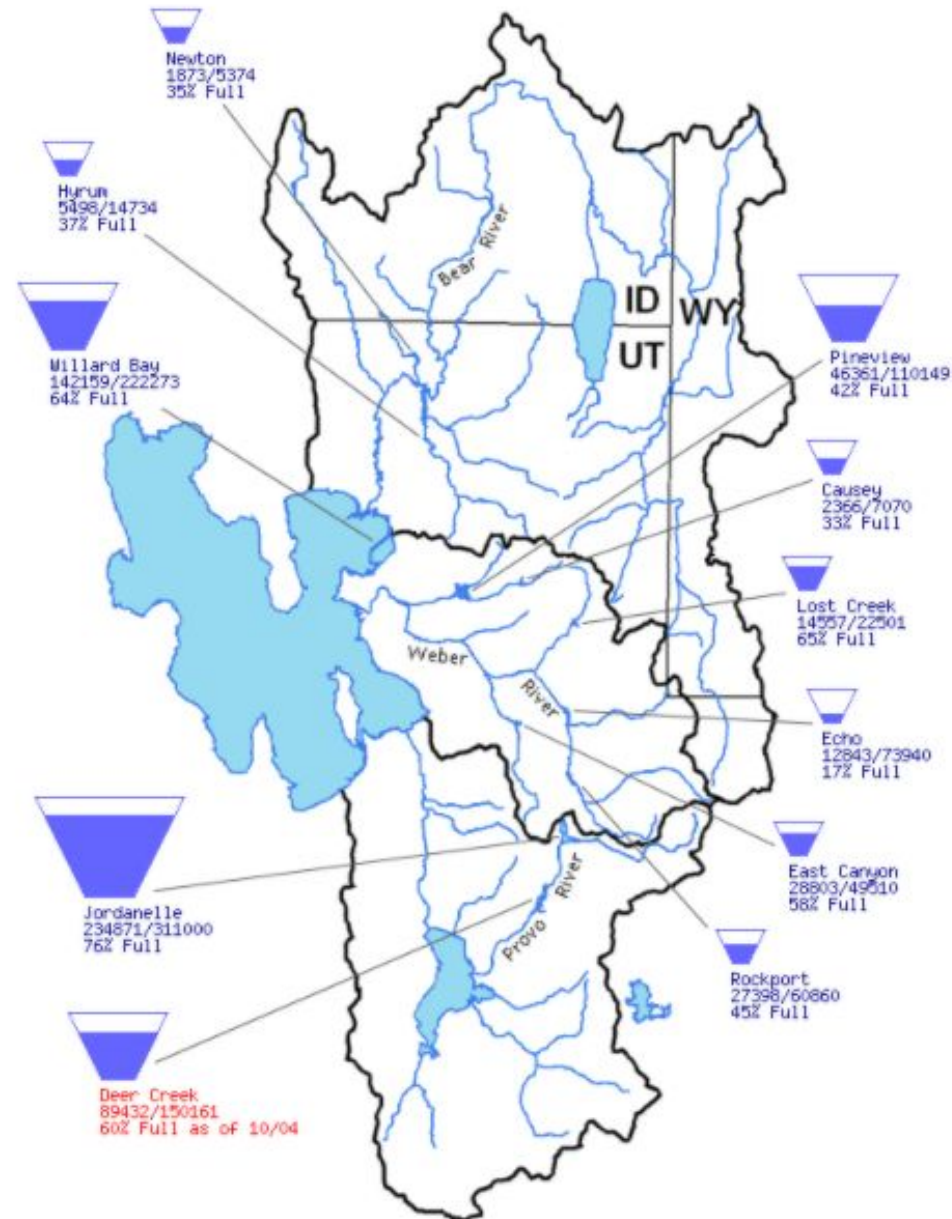


Soil Moisture (Current) SNOTEL & SCAN 8" sensor depth

Agency - NRCS Snow Survey



Bear, Weber, and Provo River Basins



Bear River Basin: roughly the same as two weeks ago

Weber River Basin: gone down up to 4% in the last two weeks

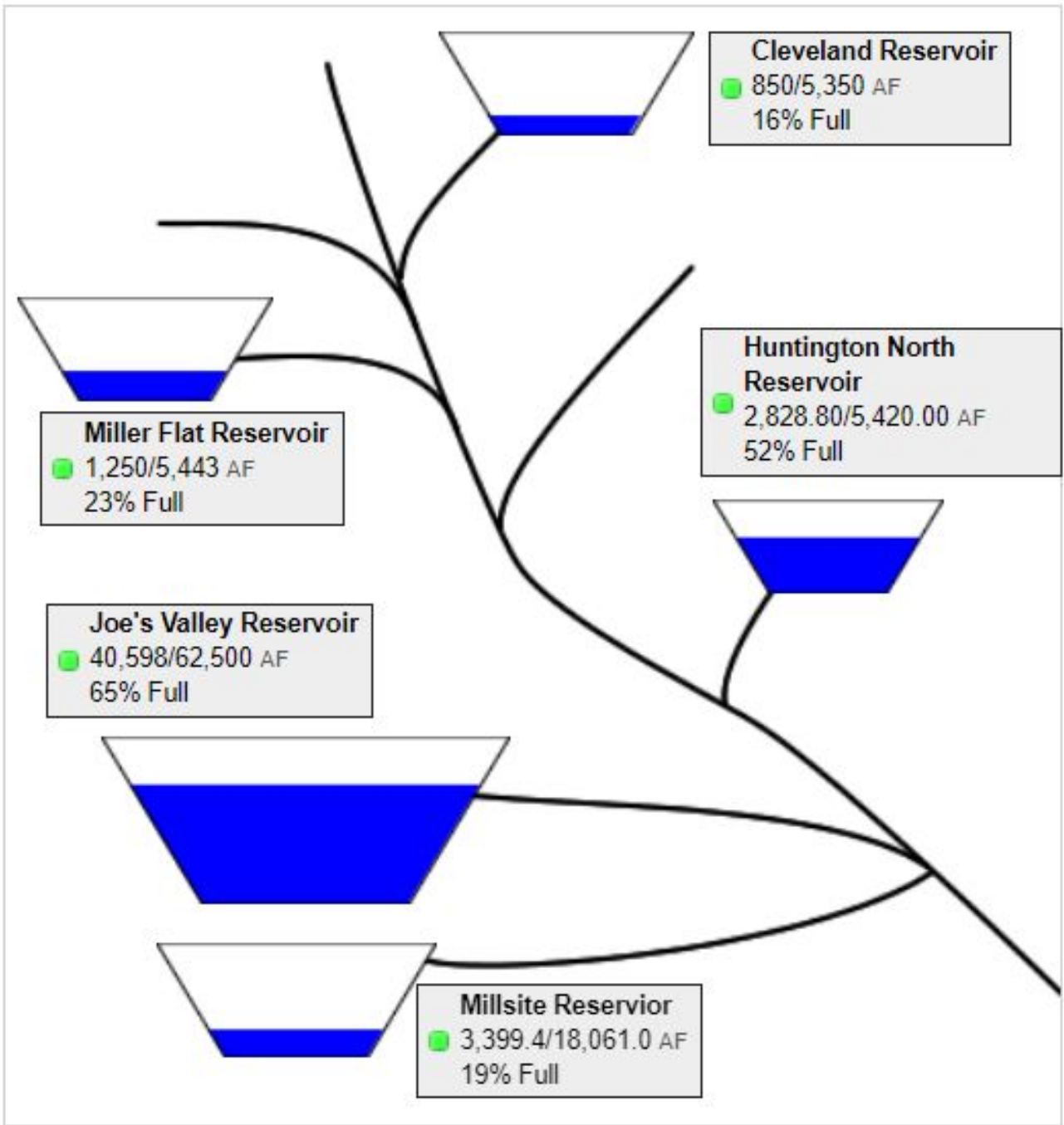
Provo River Basin: gone down 2-3% in last two weeks

In the last two weeks:
Cleveland Reservoir is down 18%

Huntington North Reservoir is down 6%

Millsite Reservoir has gone down 2%

Remaining reservoirs are within 2% of previous levels

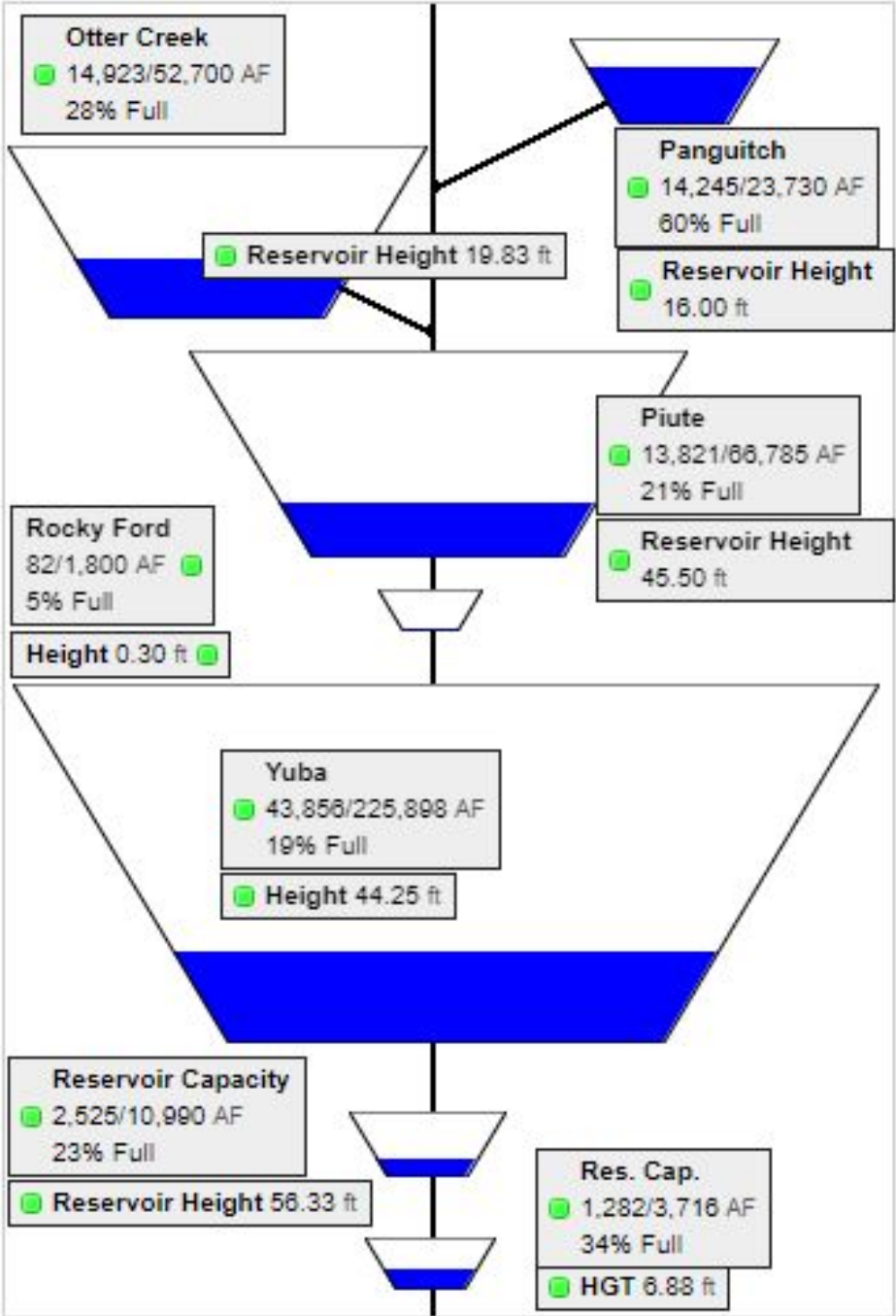


In the last two weeks:

Otter Creek, Panguitch and Piute down 5-7%

Rocky Ford, Gunnison Bend and Yuba remain the same

DMAD has gone up 7%



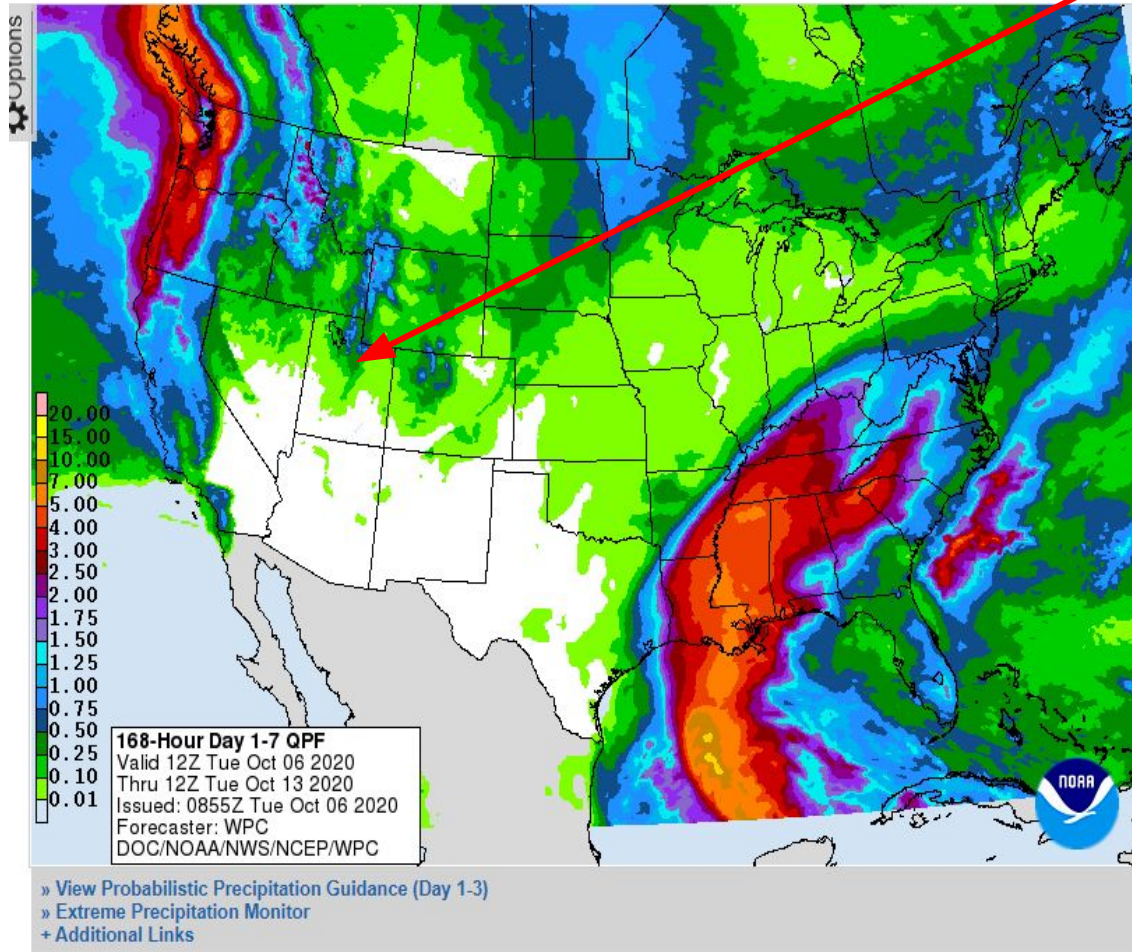
Weather Forecast Office Utah Day 1-7 Outlook

This WPC forecast shows .8-1.5" of precipitation for the upper elevation areas in Northern Utah starting Saturday evening.

Quantitative Precipitation Forecasts [Legacy Page:](#)

Valid 12Z 10/06/2020 - 12Z 10/13/2020

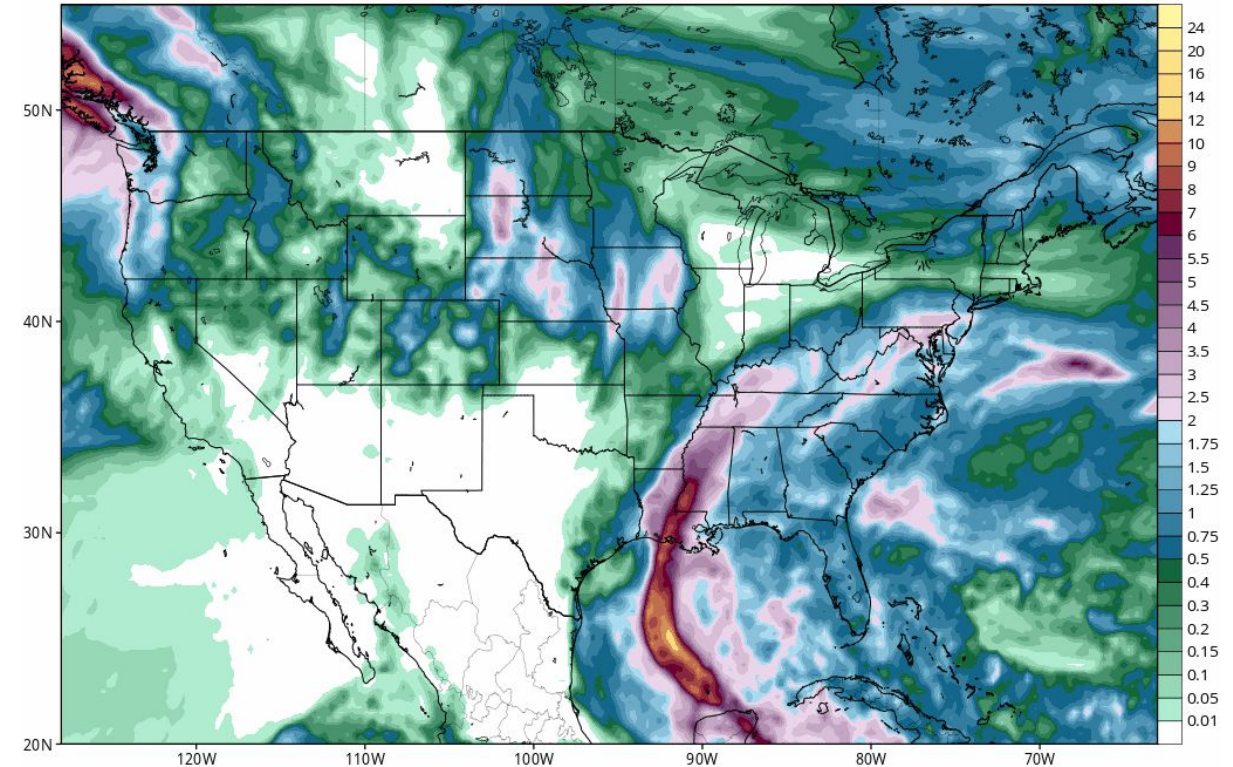
Day 1 Day 2 Day 3 Day 4 Day 5 Day 6 Day 7 | Total: Day 1-2 Day 1-3 Day 1-5 Day 1-7



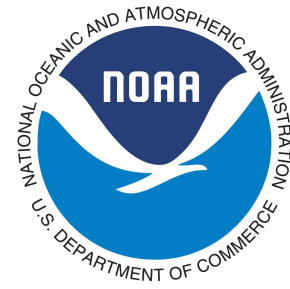
Average October Precipitation in the upper elevations of Utah is 2-4 inches for October.

GFS Total Accumulated Precipitation (inches) from 06z06Oct2020 to 06z13Oct2020
Init: 06z Oct 06 2020 Forecast Hour: [168] valid at 06z Tue, Oct 13 2020

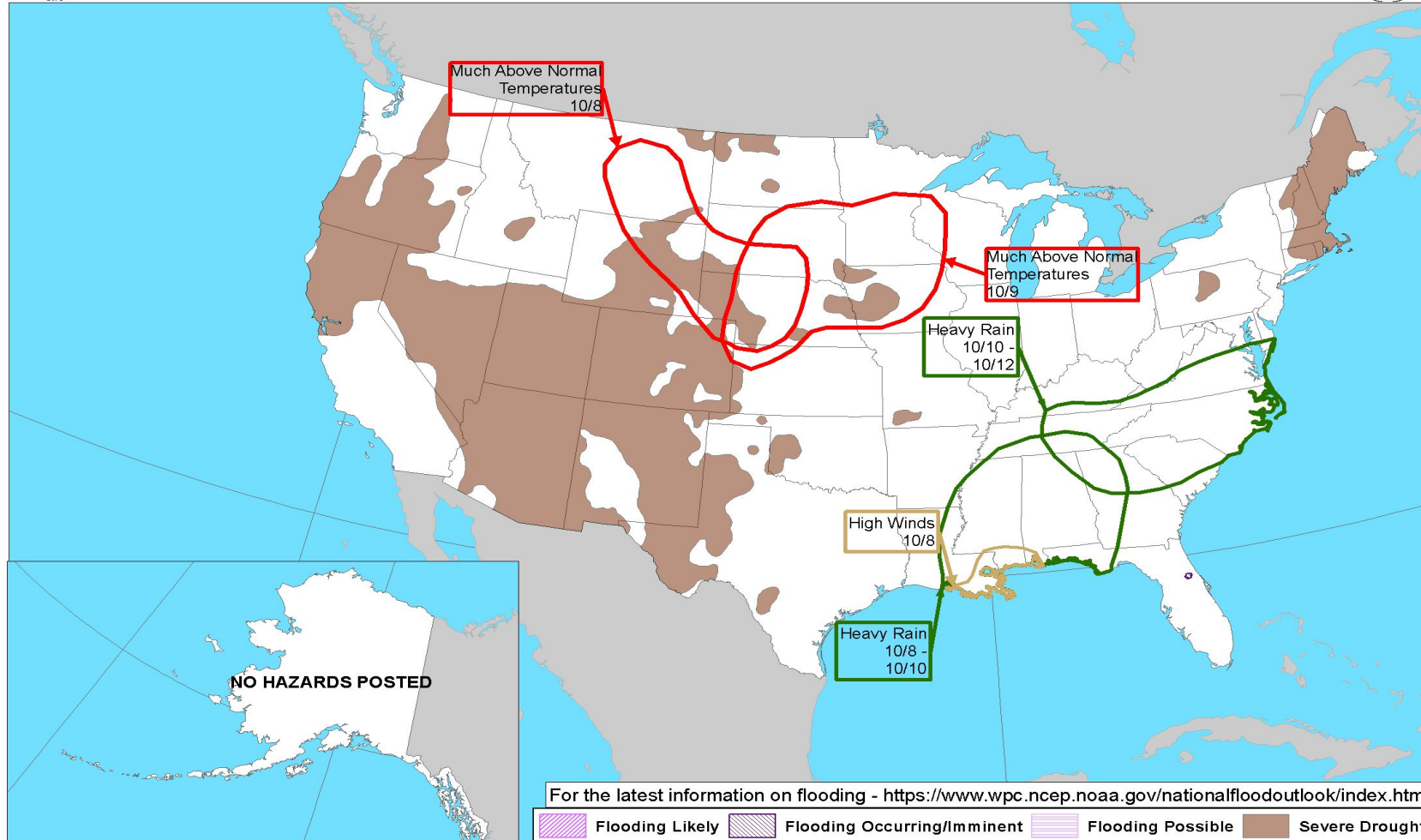
TROPICALTIDBITS.COM



Weather Prediction Center U.S. Day 3-7



Day 3-7 U.S. Hazards Outlook Valid: 10/08/2020-10/12/2020



Weather Prediction Center

Made: 10/05/2020 3PM EDT

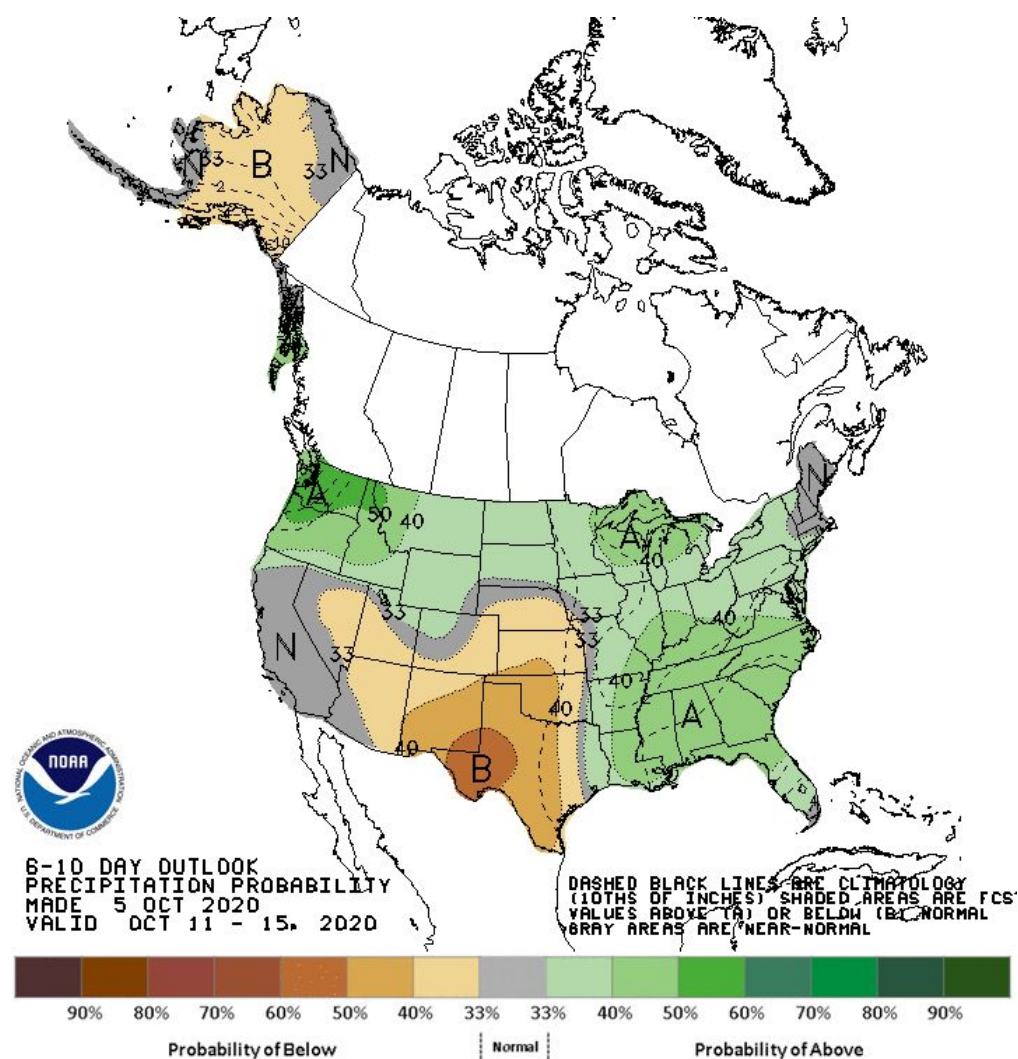
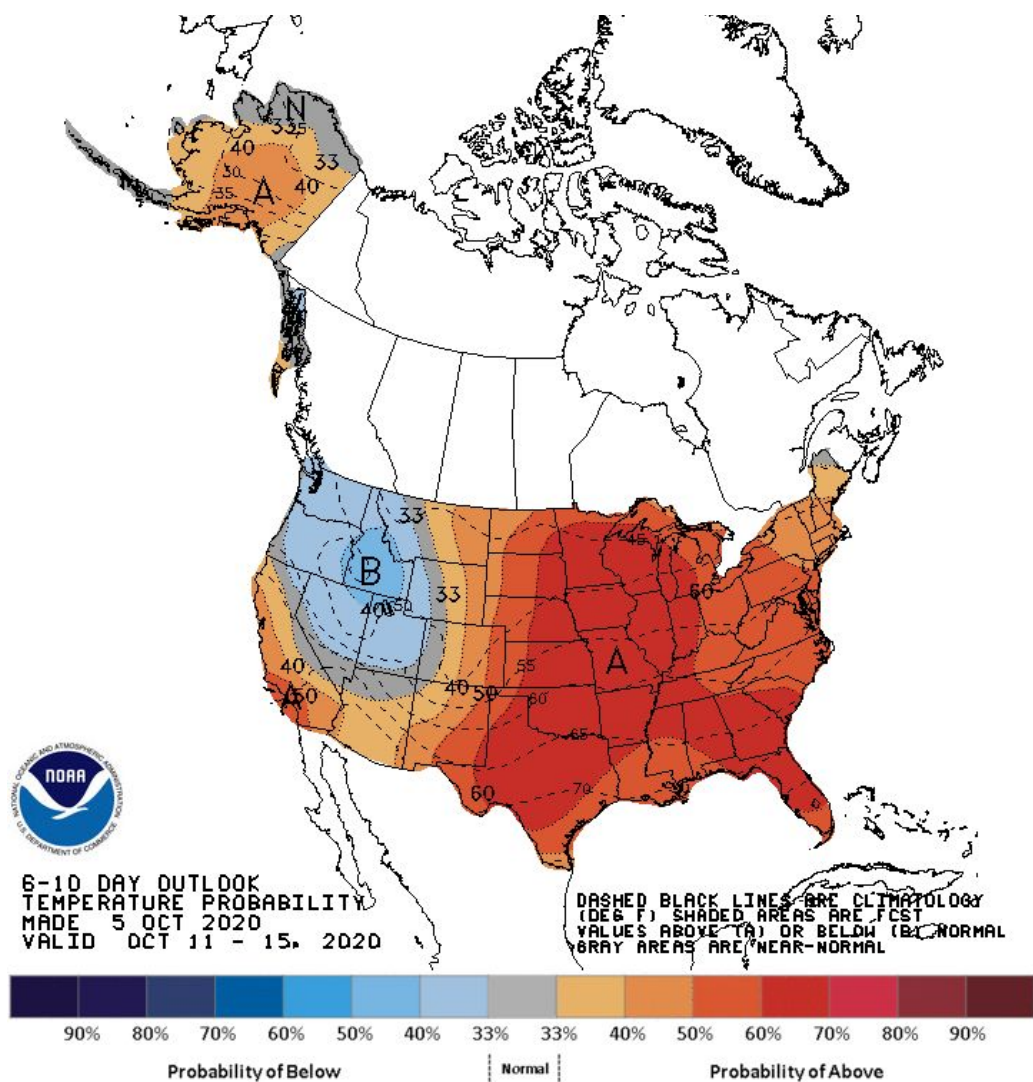
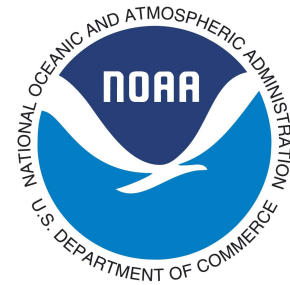
Follow us:

www.wpc.ncep.noaa.gov

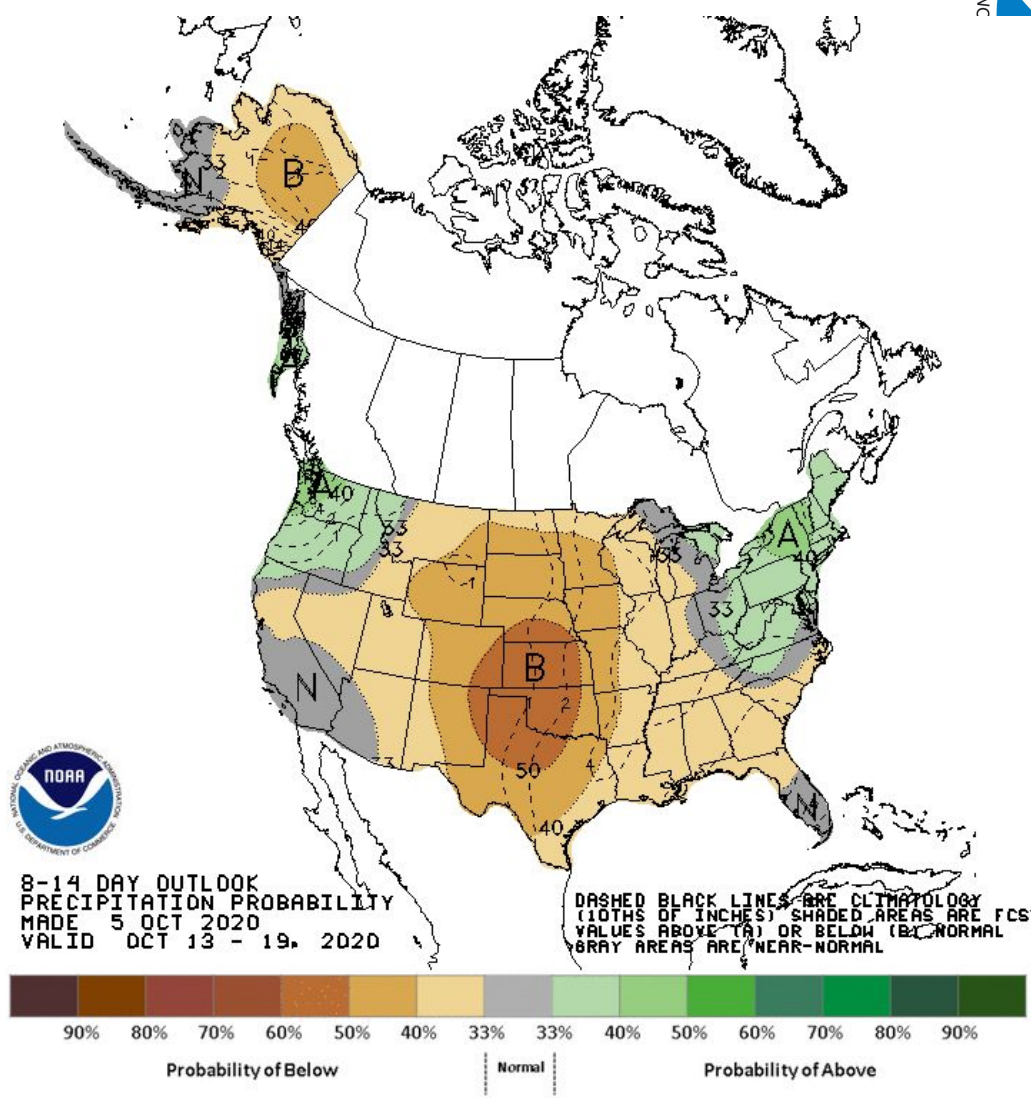
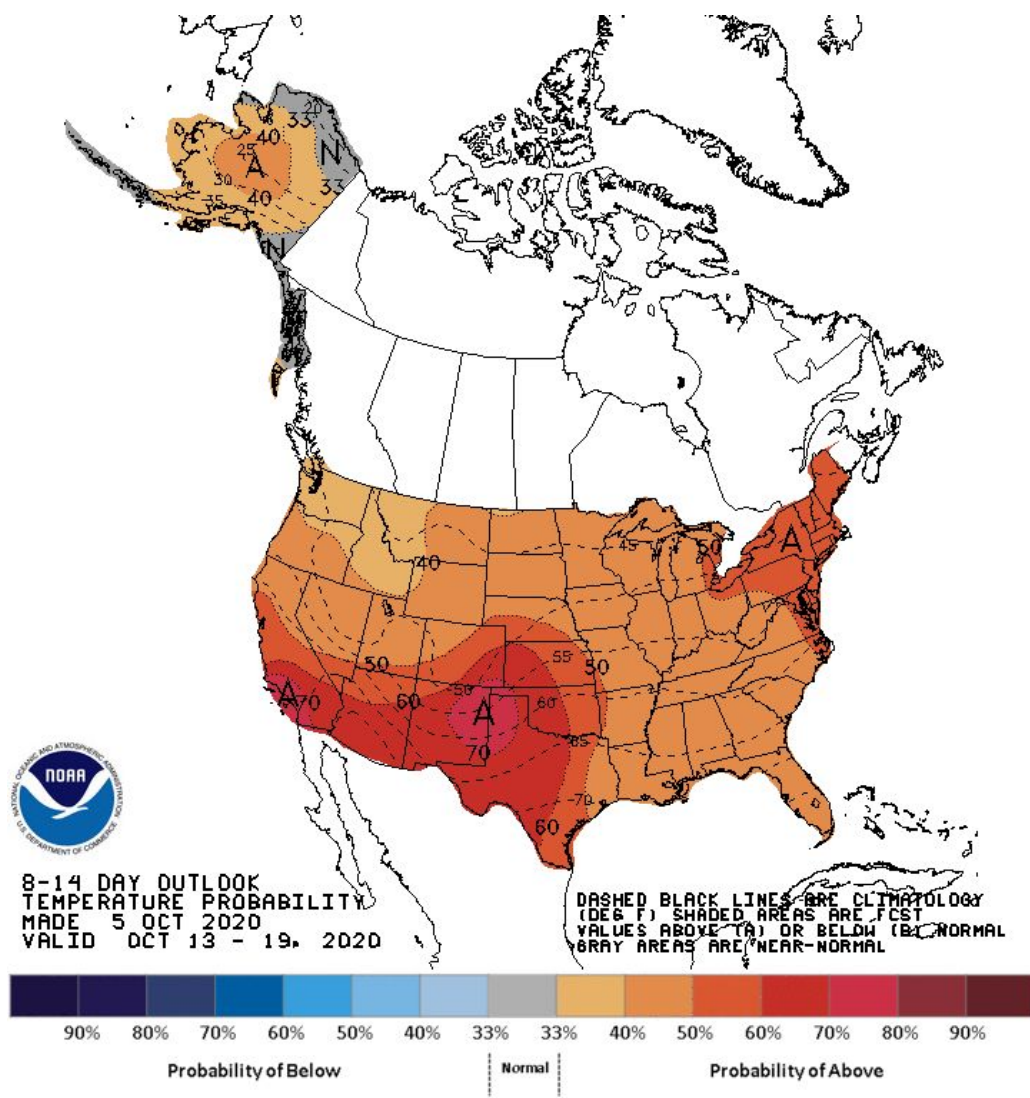
Agency - National Weather Service Weather Forecast Office

Presenter - Aldis Strautins

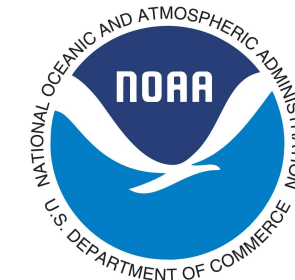
CPC 6 to 10 Day Outlooks - Temperature/Precipitation



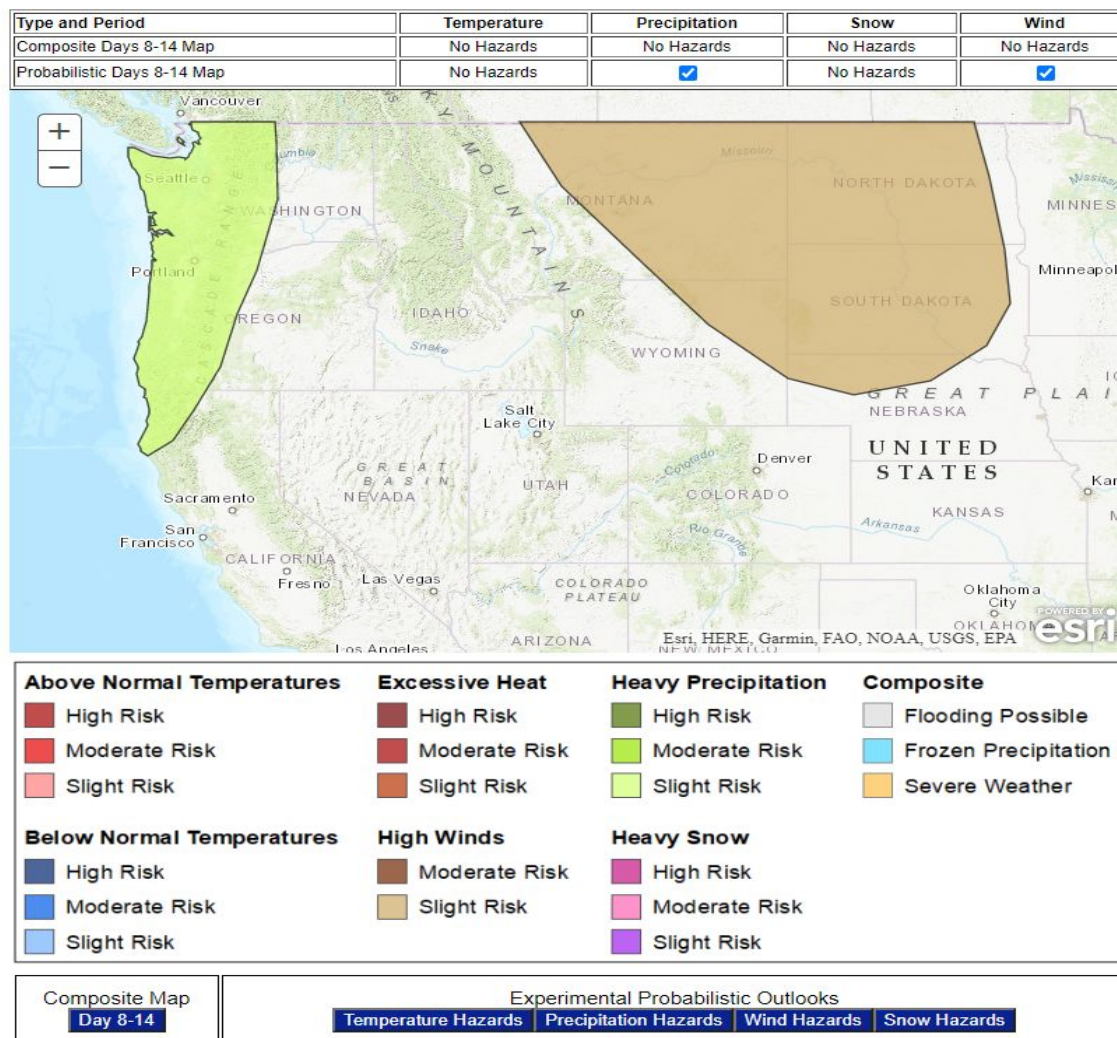
CPC 8 to 14 Day Outlooks - Temperature/Precipitation



Week 2 Hazards Outlook



U.S. Week-2 Hazards Outlook - Made October 05, 2020 | [About the Hazards Outlook](#)



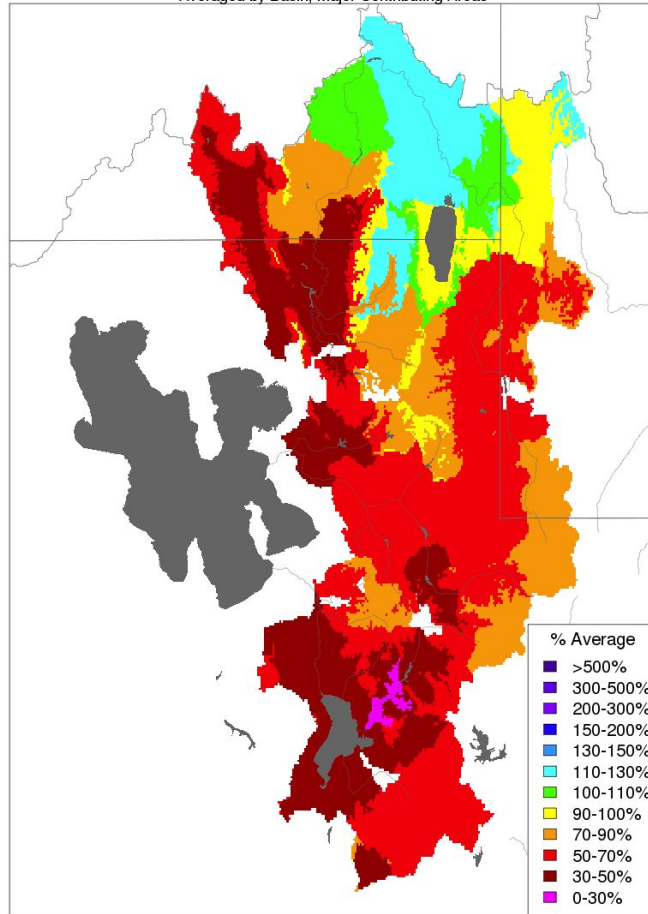
CBRFC Utah Water Year 2020 Precipitation October 2019 - September 2020



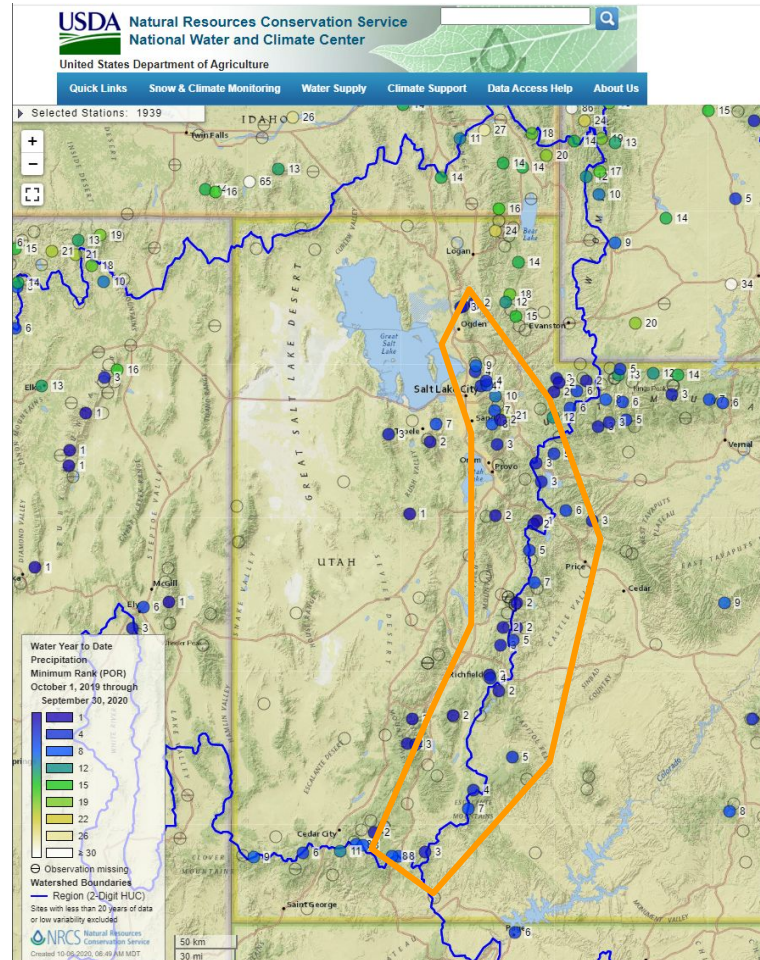
Percent of Average WT 2020

Minimum Station Ranks WY2020

Water Year Precipitation, October 2019 - October 2019
Averaged by Basin, Major Contributing Areas



Prepared by NOAA, Colorado Basin River Forecast Center
Salt Lake City, Utah, www.cbrfc.noaa.gov

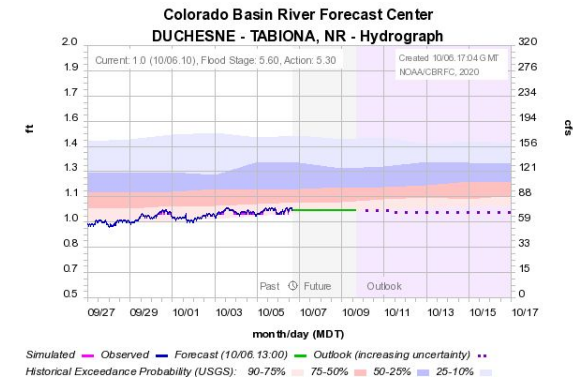
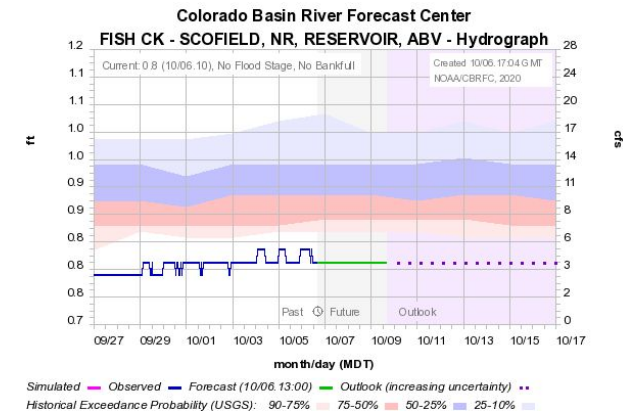
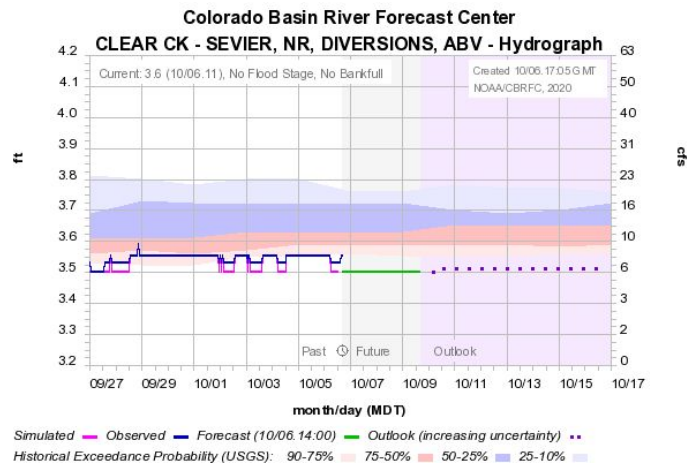
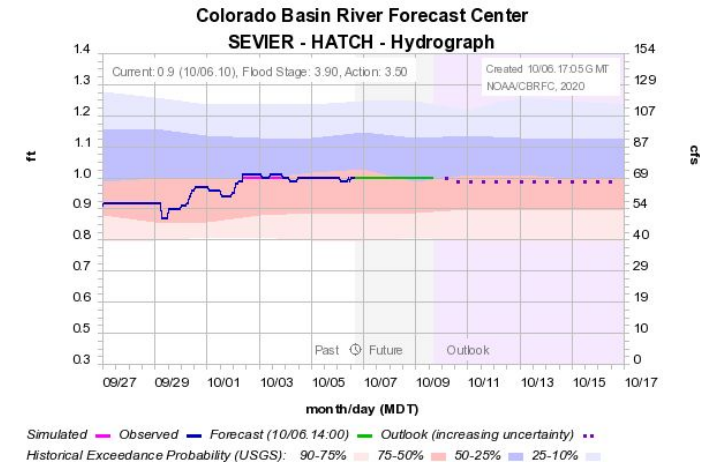
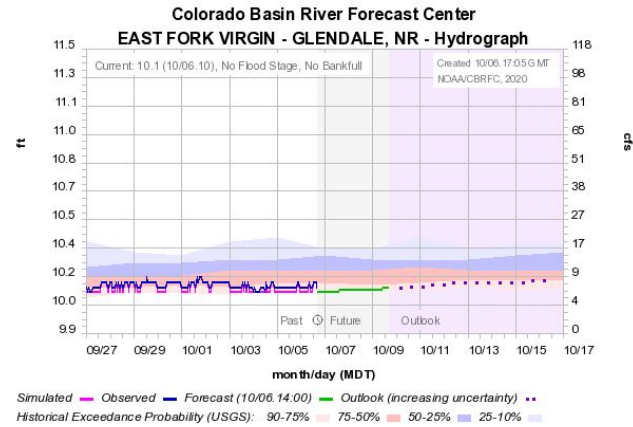
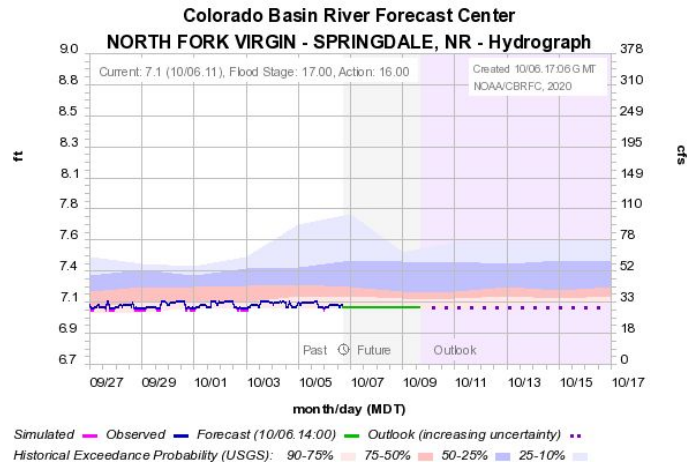
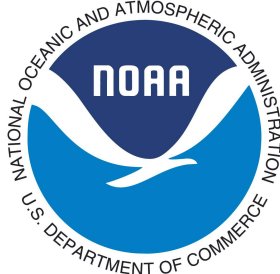


As WY2020 Precipitation ranked in the top 10 lowest for most stations within Utah with several exception.

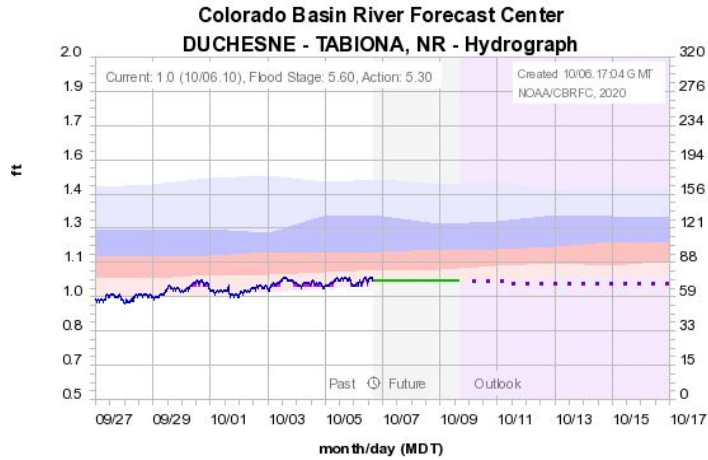
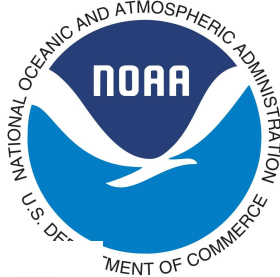
Along the crest of the Wasatch range from the far south to as far north as Ogden values are in the top 5 lowest years for accumulated WY Precip.

These high elevation regions account for the majority of spring runoff and the bulk of our annual WS.

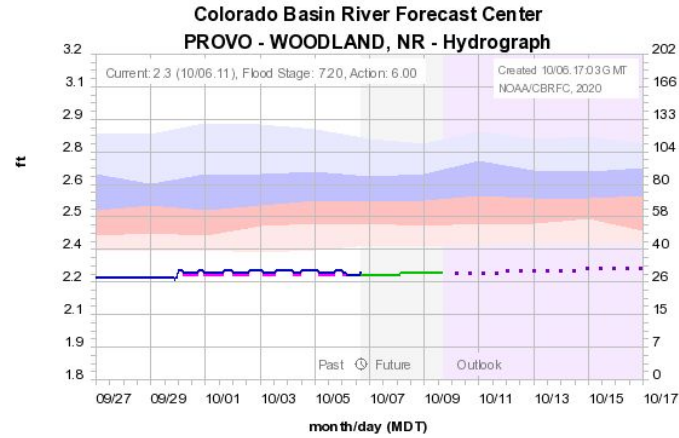
Selected Hydrographs from Southern and Central Utah



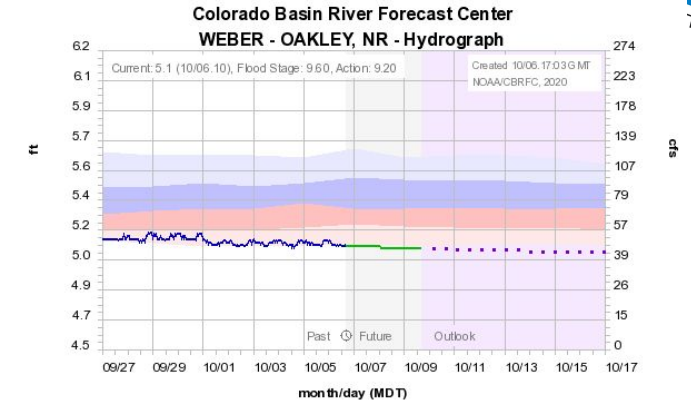
Selected Hydrographs for Northern and Eastern Utah



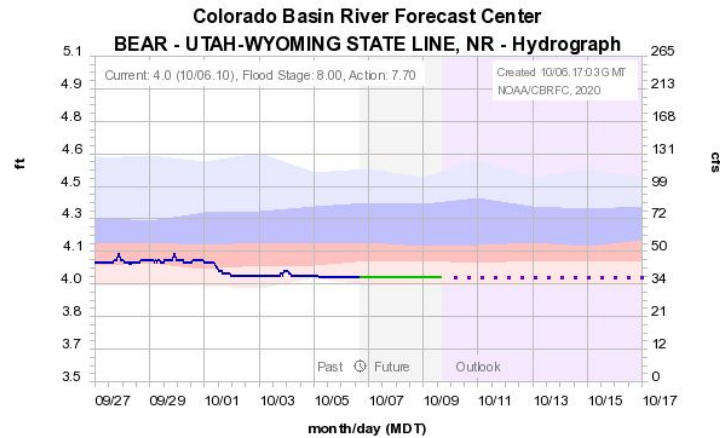
Simulated Observed Forecast (10/06.13:00) Outlook (increasing uncertainty) ..
Historical Exceedance Probability (USGS): 90-75% 75-50% 50-25% 25-10%



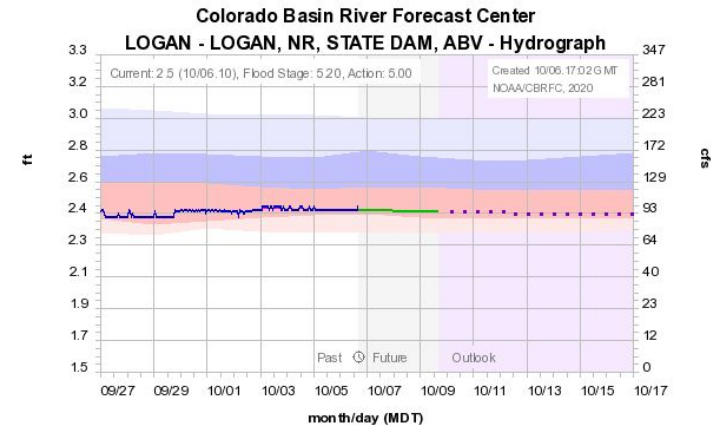
Simulated Observed Forecast (10/06.14:00) Outlook (increasing uncertainty) ..
Historical Exceedance Probability (USGS): 90-75% 75-50% 50-25% 25-10%



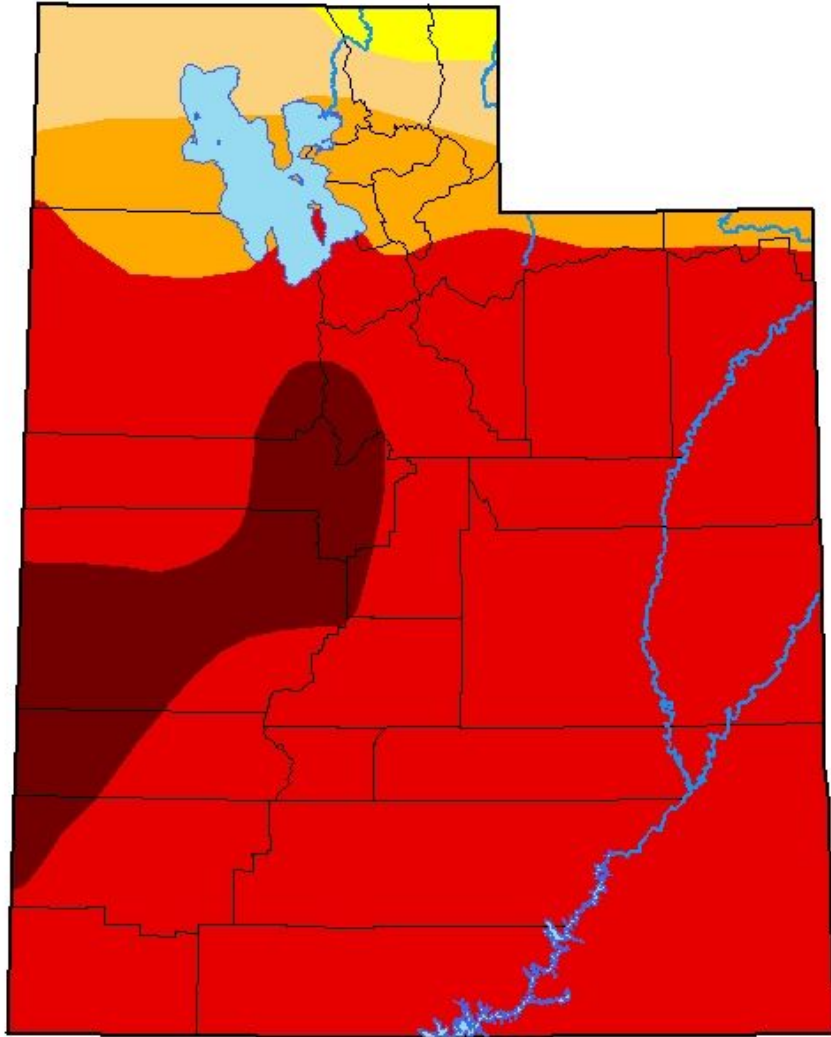
Simulated Observed Forecast (10/06.14:00) Outlook (increasing uncertainty) ..
Historical Exceedance Probability (USGS): 90-75% 75-50% 50-25% 25-10%



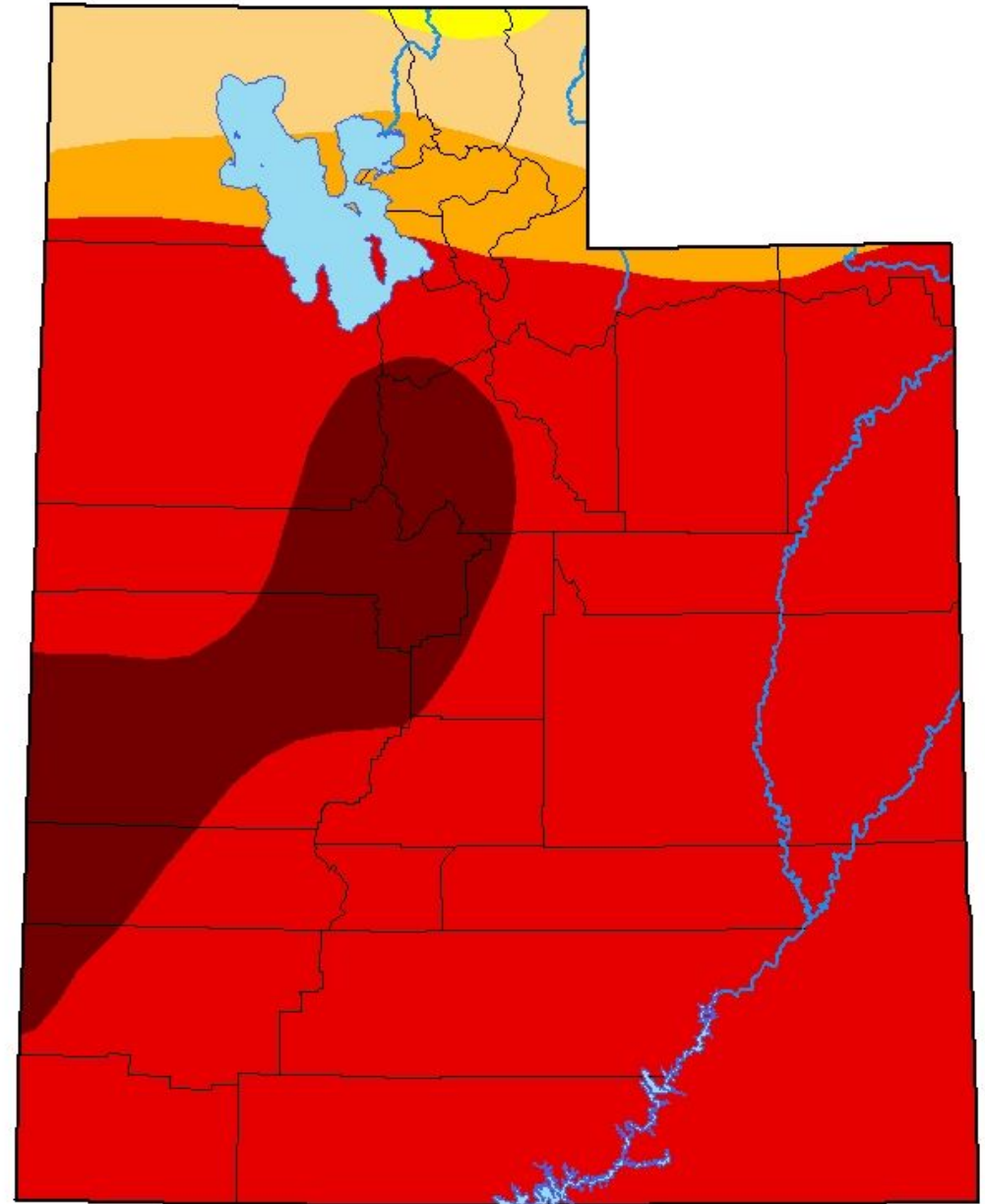
Simulated Observed Forecast (10/06.14:00) Outlook (increasing uncertainty) ..
Historical Exceedance Probability (USGS): 90-75% 75-50% 50-25% 25-10%



Simulated Observed Forecast (10/06.14:00) Outlook (increasing uncertainty) ..
Historical Exceedance Probability (USGS): 90-75% 75-50% 50-25% 25-10%



September 22, 2020



September 29, 2020