



Utah Drought Monitor Webinar

The meeting will begin shortly



Thank you to our contributors

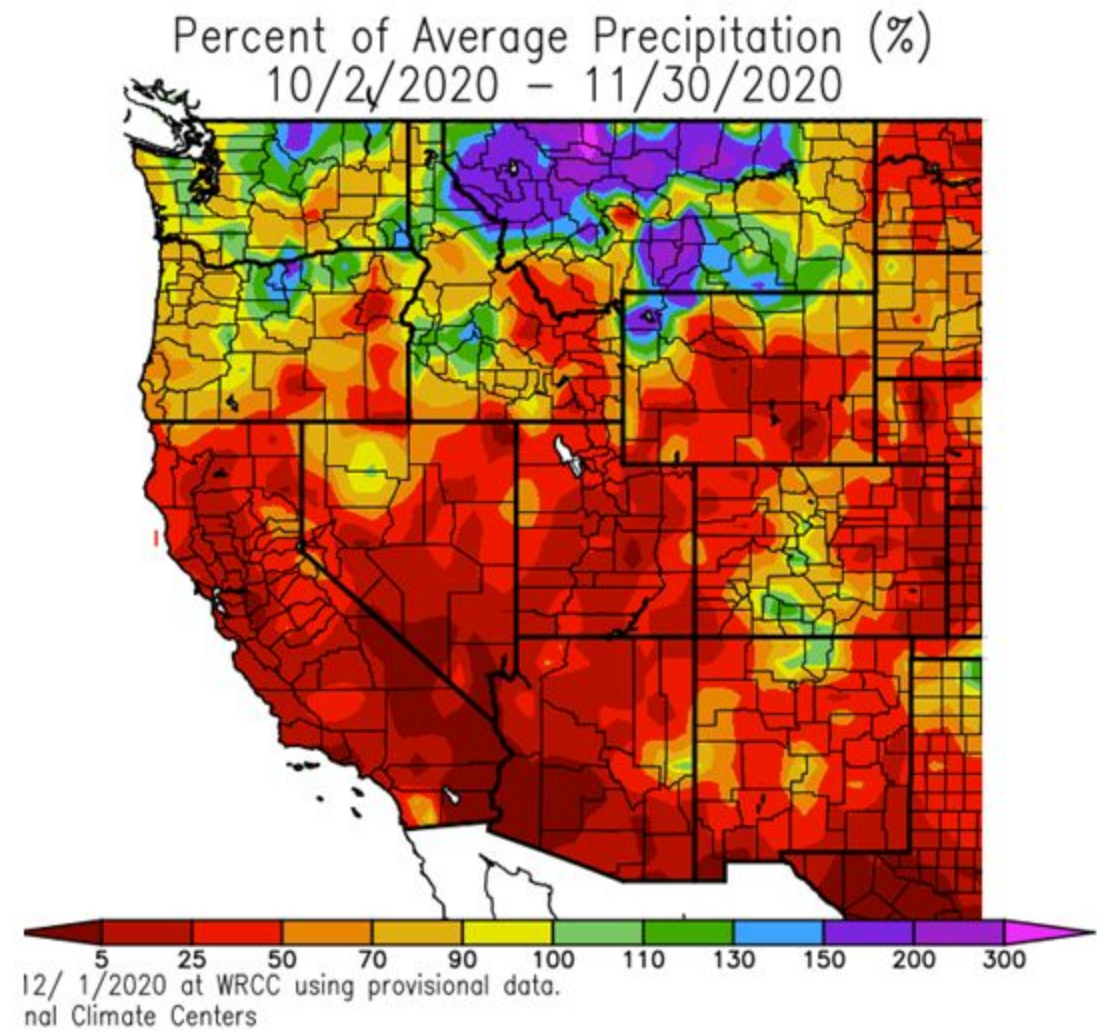
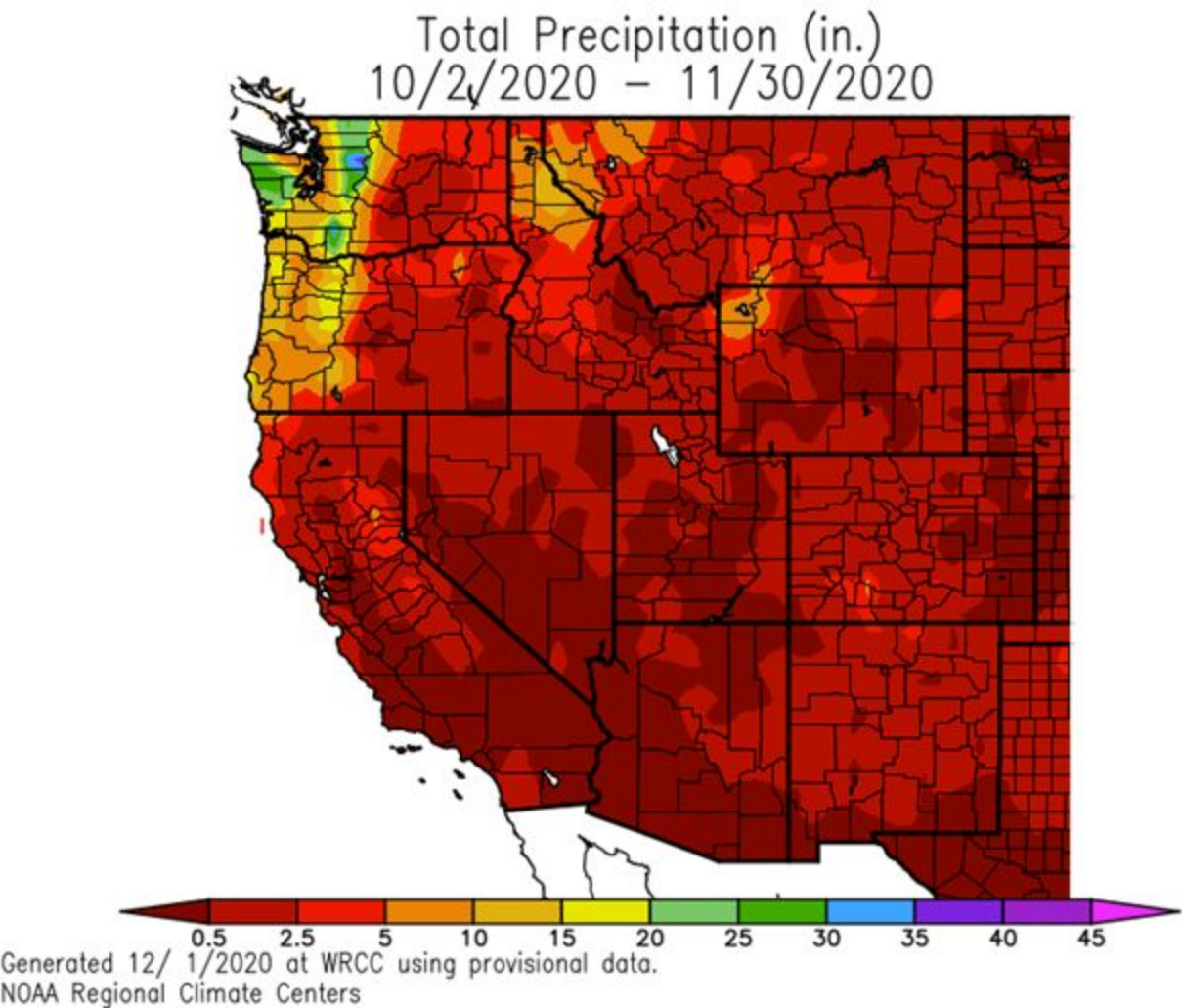




Utah Drought Monitor Webinar

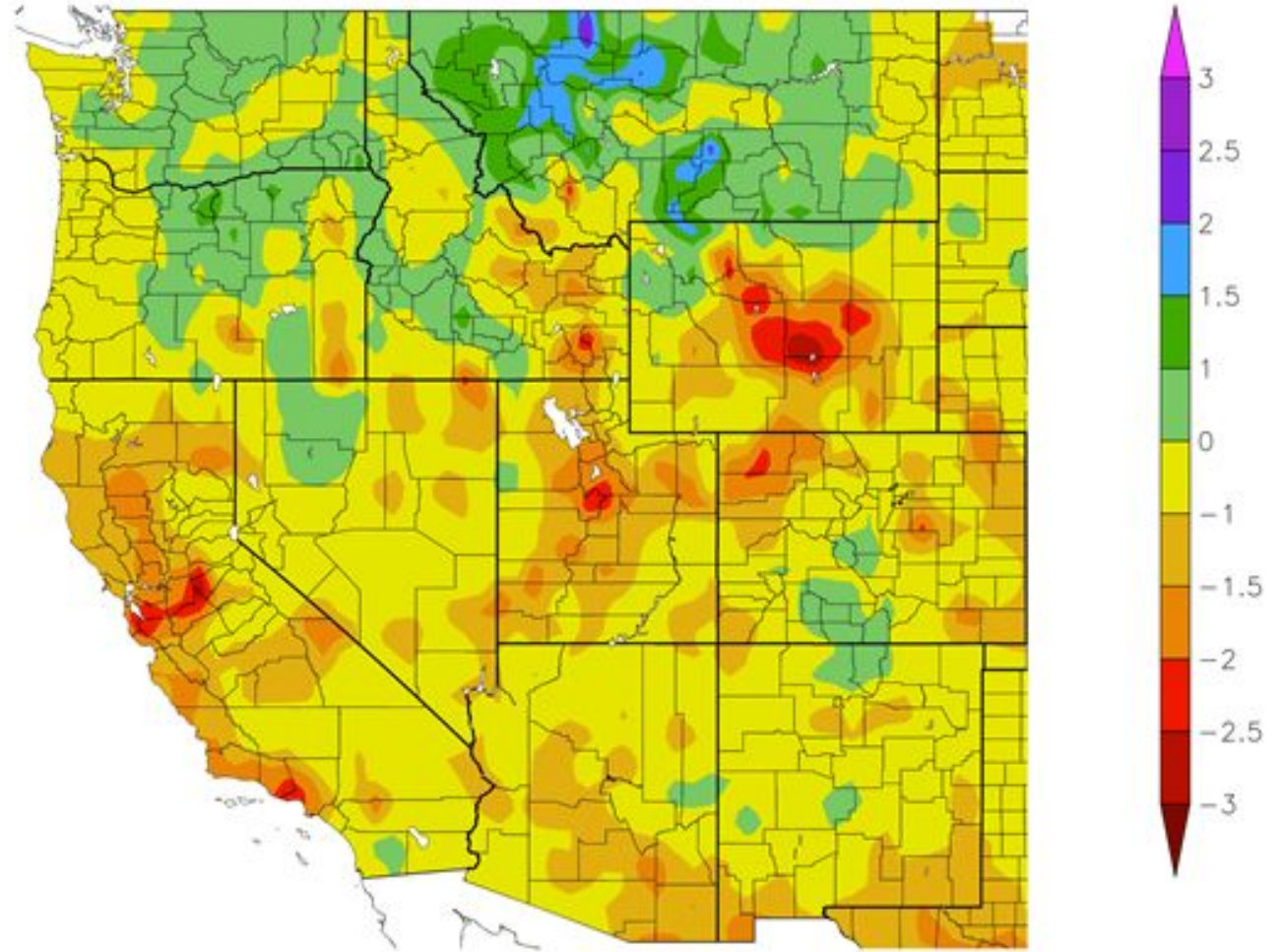
December 1, 2020

Precipitation 60 day history (Percent of Average)



Standardized Precipitation Index

60 Day SPI
10/2/2020 – 11/30/2020

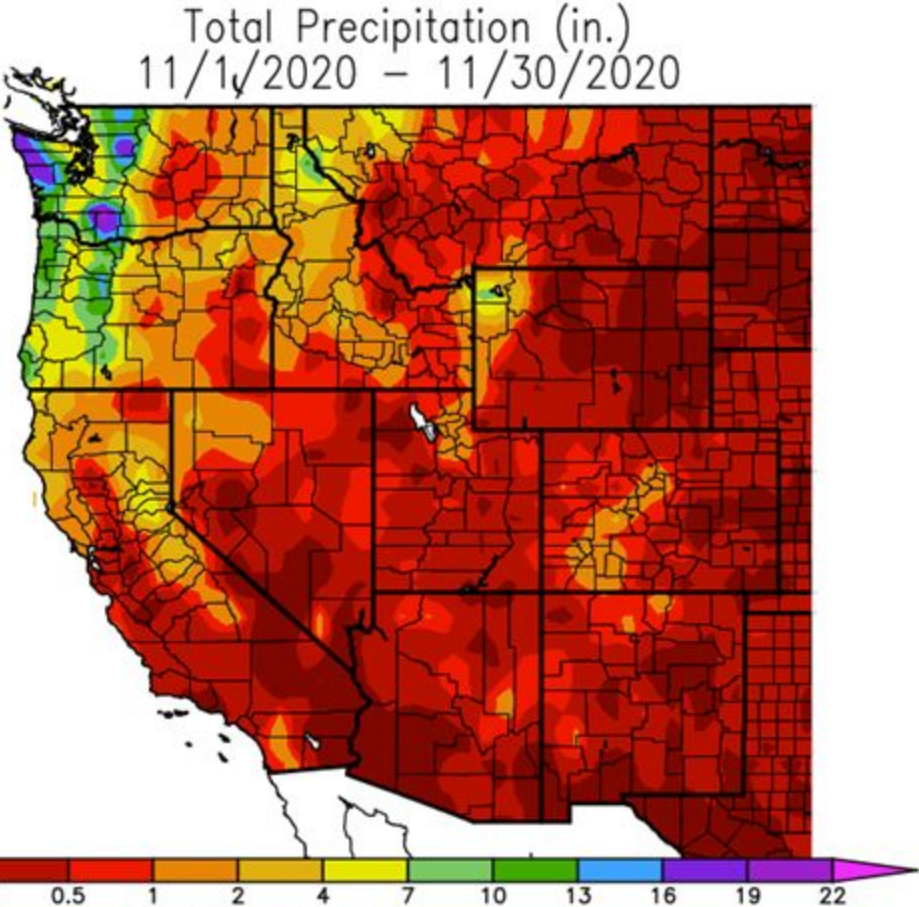


Agency -
Presenter -

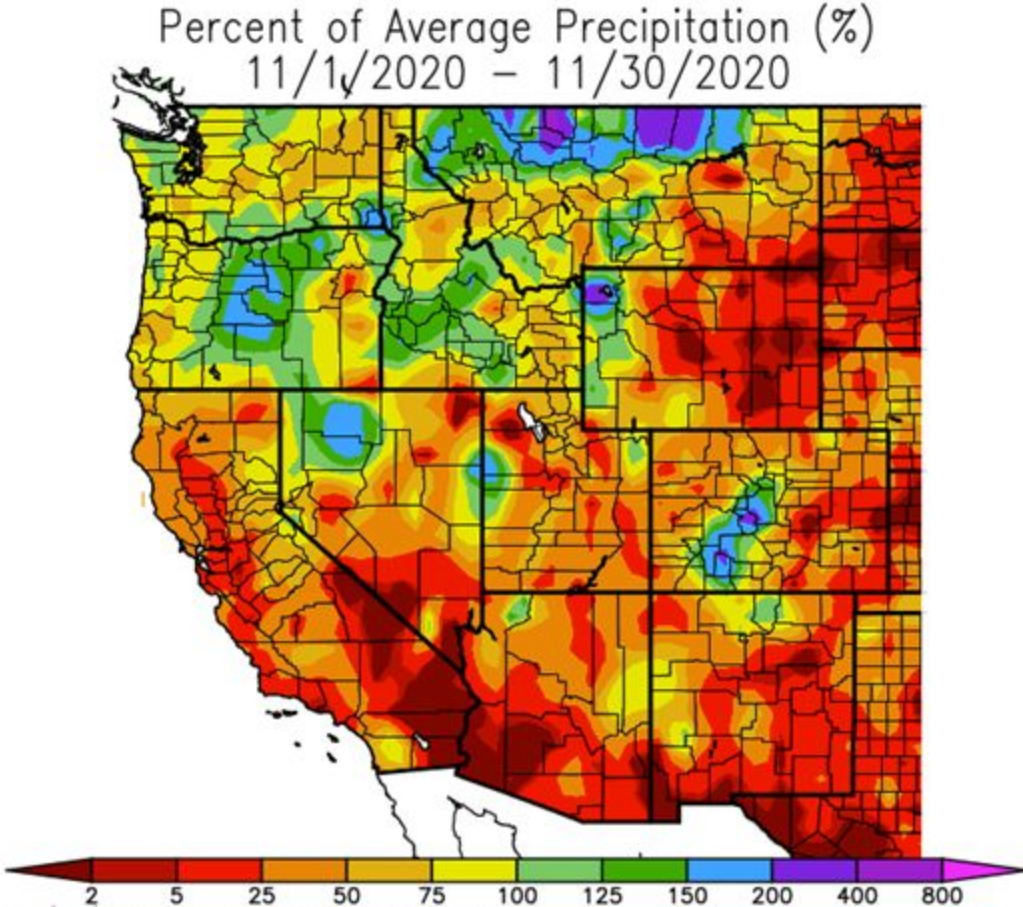
2020 at HPRCC using provisional data.

NOAA Regional Climate Centers

Precipitation 30 day history (Percent of Average)



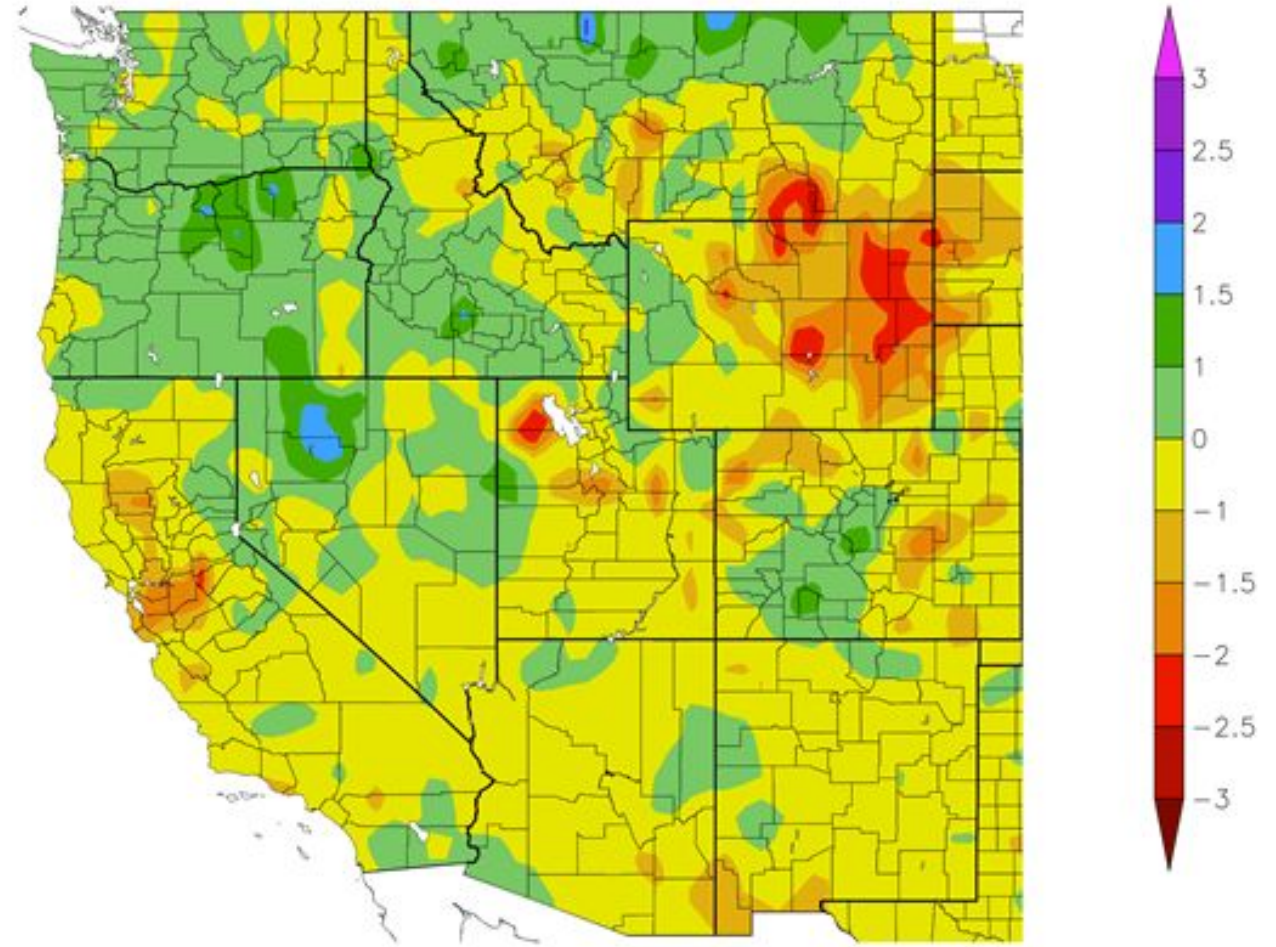
Generated 12/ 1/2020 at WRCC using provisional data.
NOAA Regional Climate Centers



Generated 12/ 1/2020 at WRCC using provisional data.
NOAA Regional Climate Centers

Standardized Precipitation Index

30 Day SPI
11/1/2020 – 11/30/2020



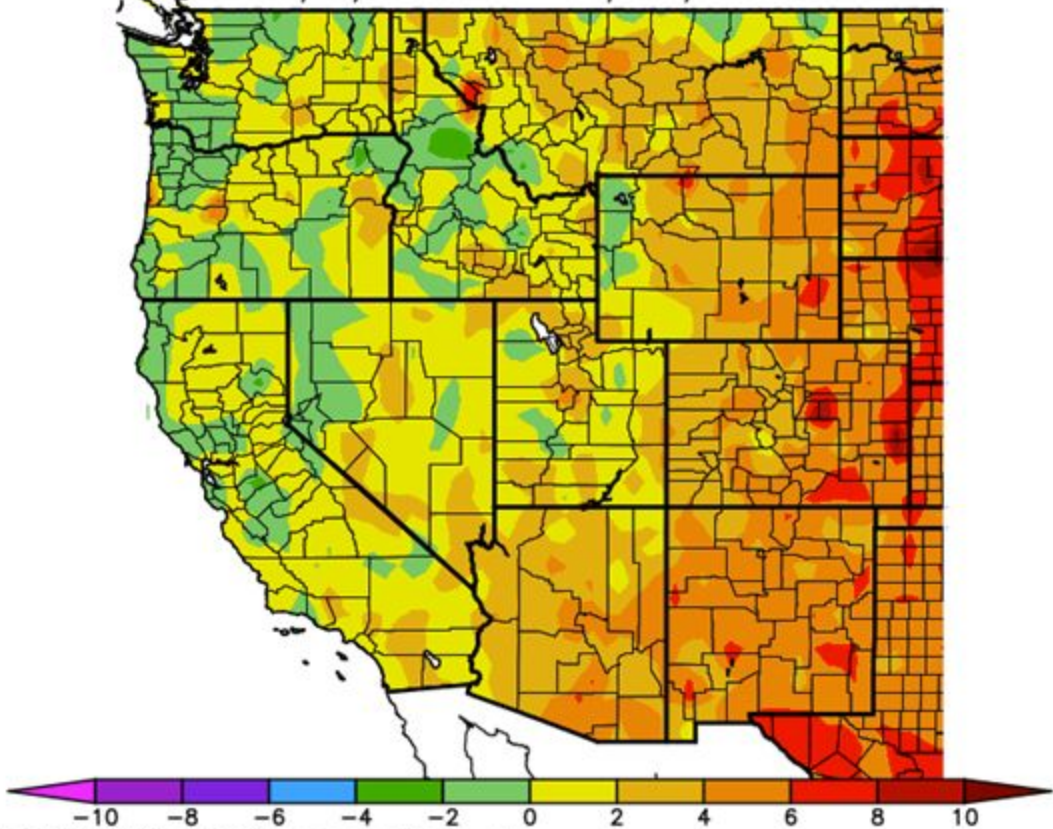
Agency -
Presenter -

2020 at HPRCC using provisional data.

NOAA Regional Climate Centers

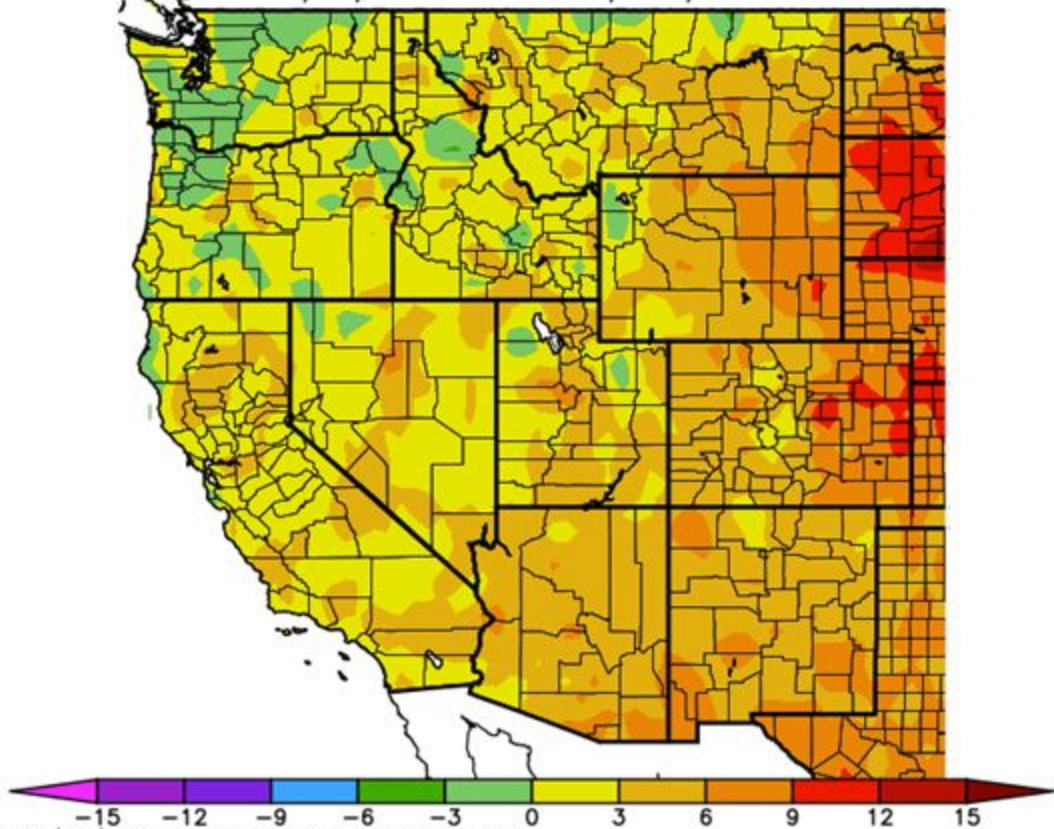
Temperature 30 day (Related to Average)

Ave. Temperature dep from Ave (deg F)
11/1/2020 – 11/30/2020



Generated 12/ 1/2020 at WRCC using provisional data.
NOAA Regional Climate Centers

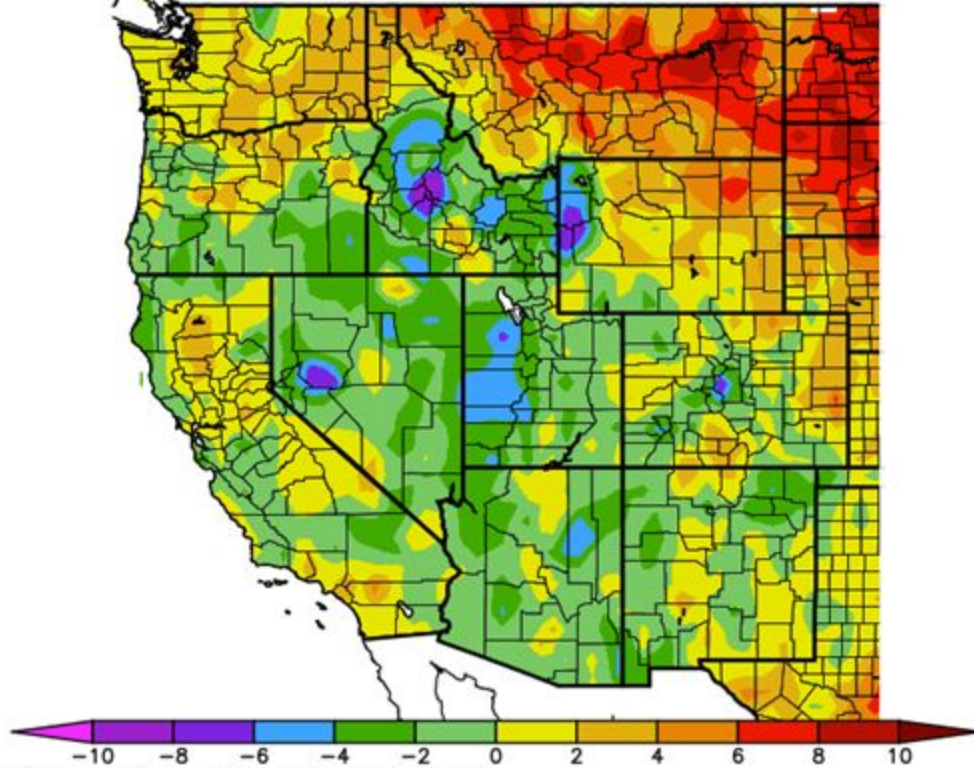
Av. Max. Temperature dep from Ave (deg F)
11/1/2020 – 11/30/2020



Generated 12/ 1/2020 at WRCC using provisional data.
NOAA Regional Climate Centers

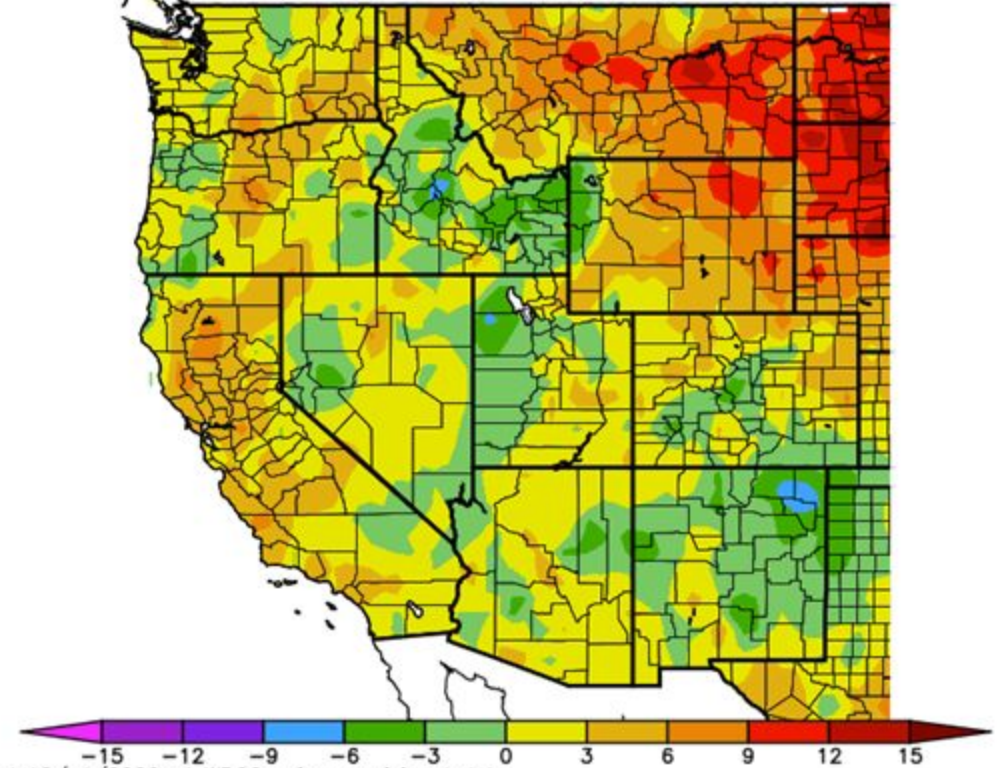
Temperature 7 day (Related to Average)

Ave. Temperature dep from Ave (deg F)
11/24/2020 – 11/30/2020



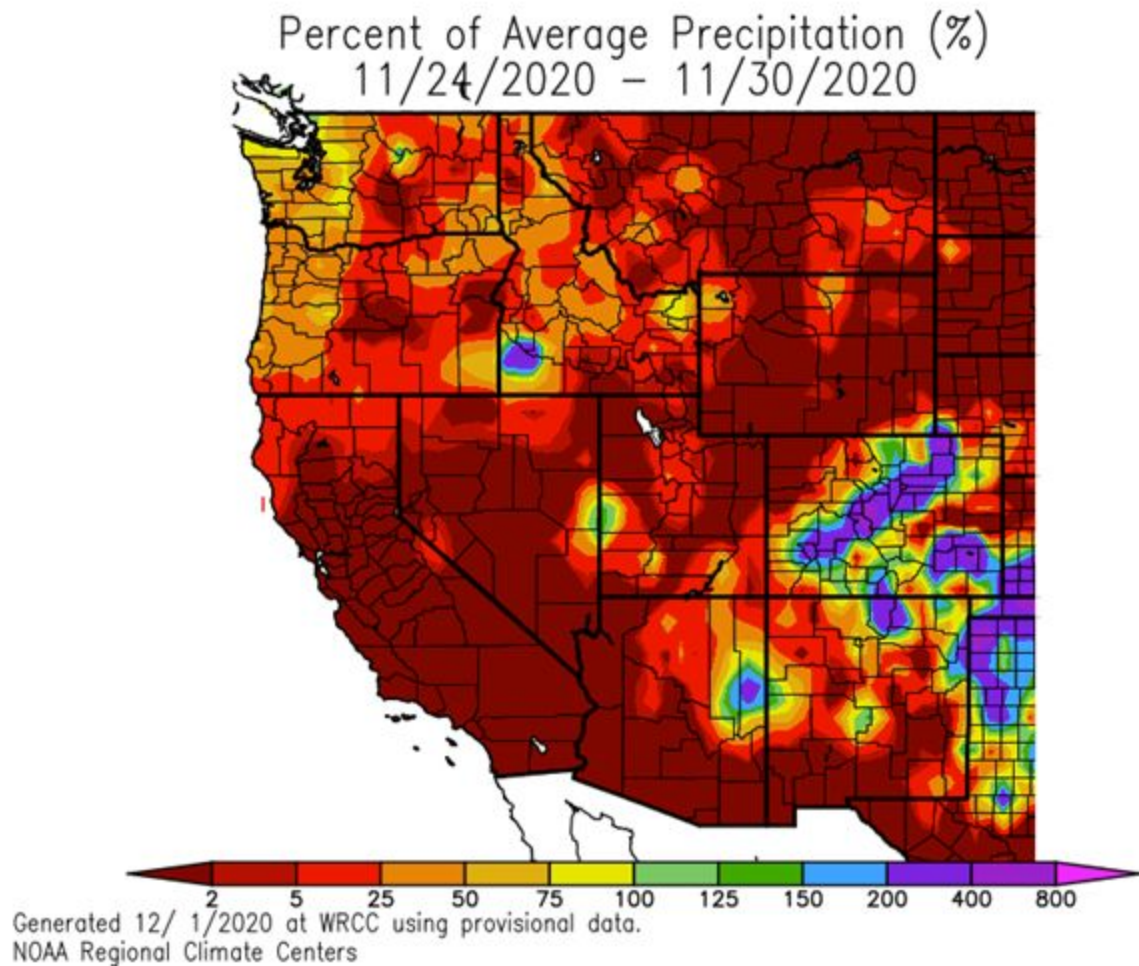
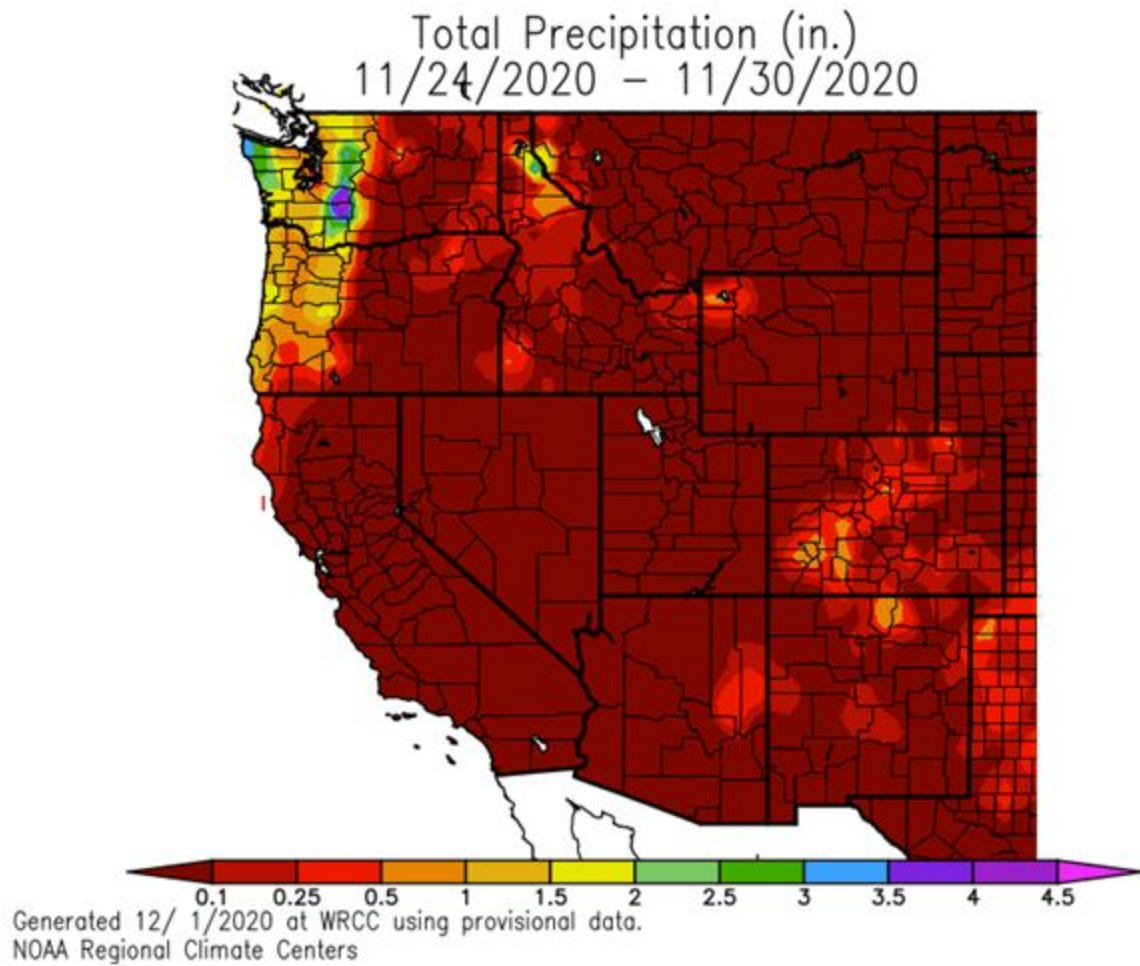
Generated 12/ 1/2020 at WRCC using provisional data.
NOAA Regional Climate Centers

Av. Max. Temperature dep from Ave (deg F)
11/24/2020 – 11/30/2020



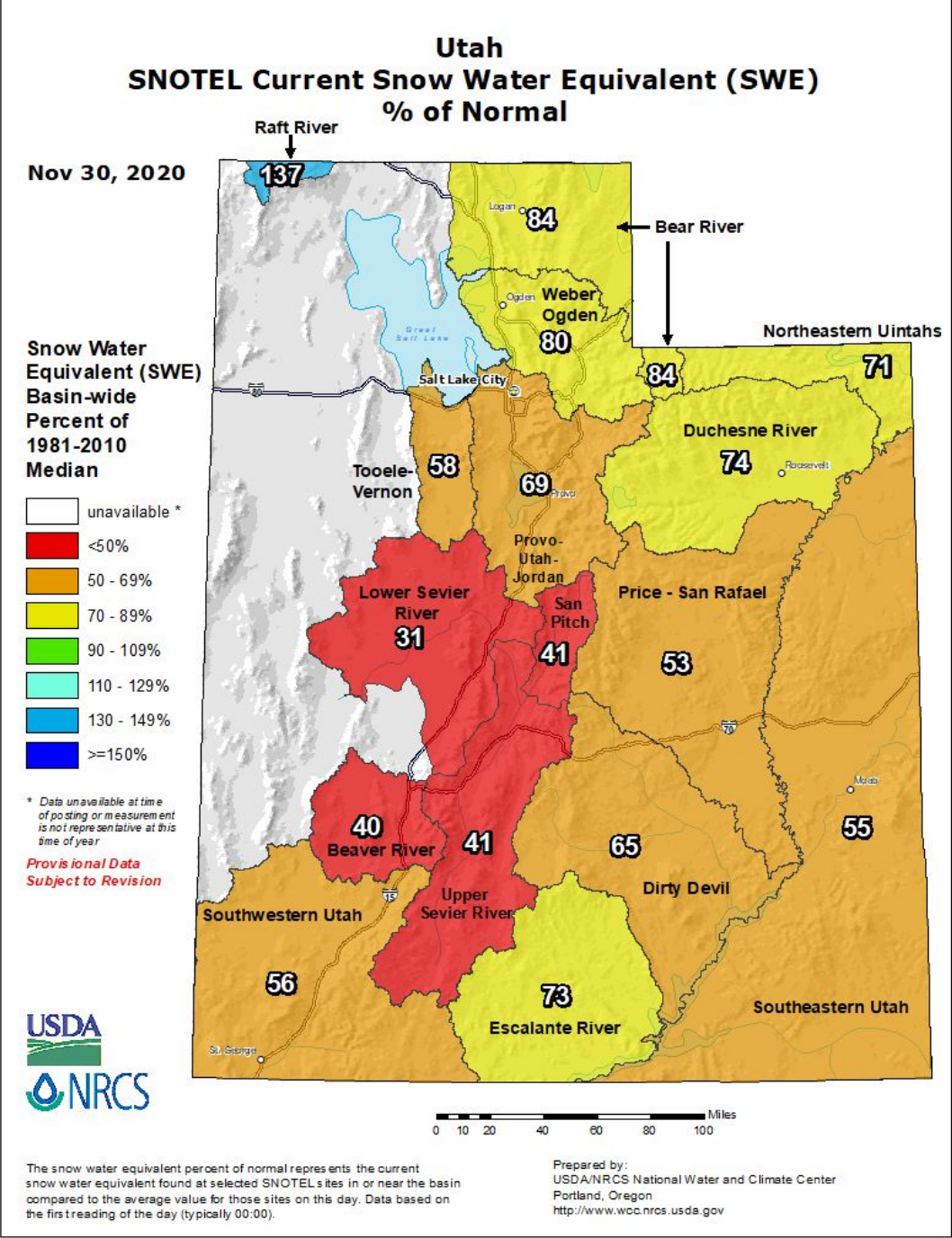
Generated 12/ 1/2020 at WRCC using provisional data.
NOAA Regional Climate Centers

Precipitation 7 day history (Percent of Average)



Agency -
Presenter -

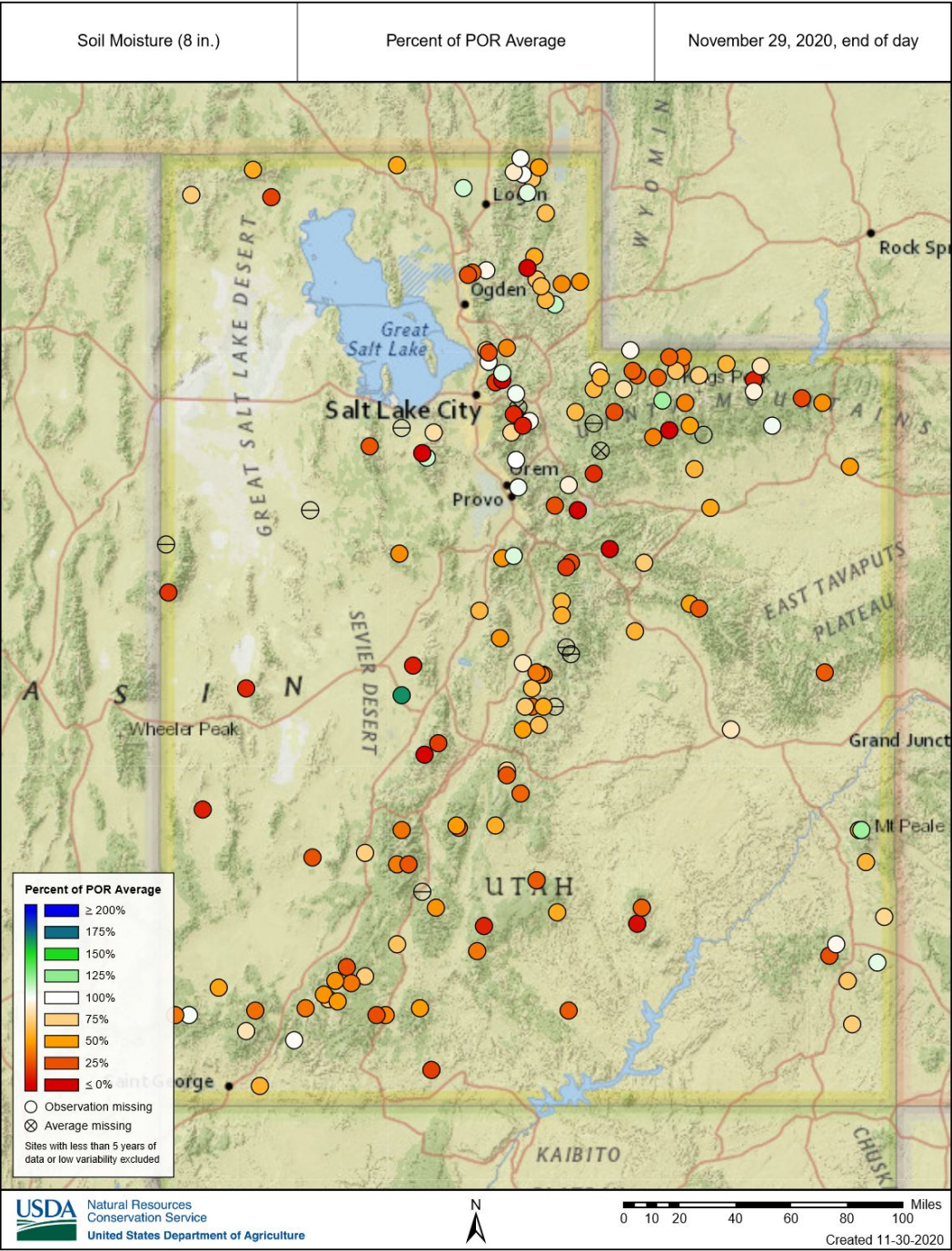
Snowpack (Water Year to date) % of normal



Soil Moisture (Current)

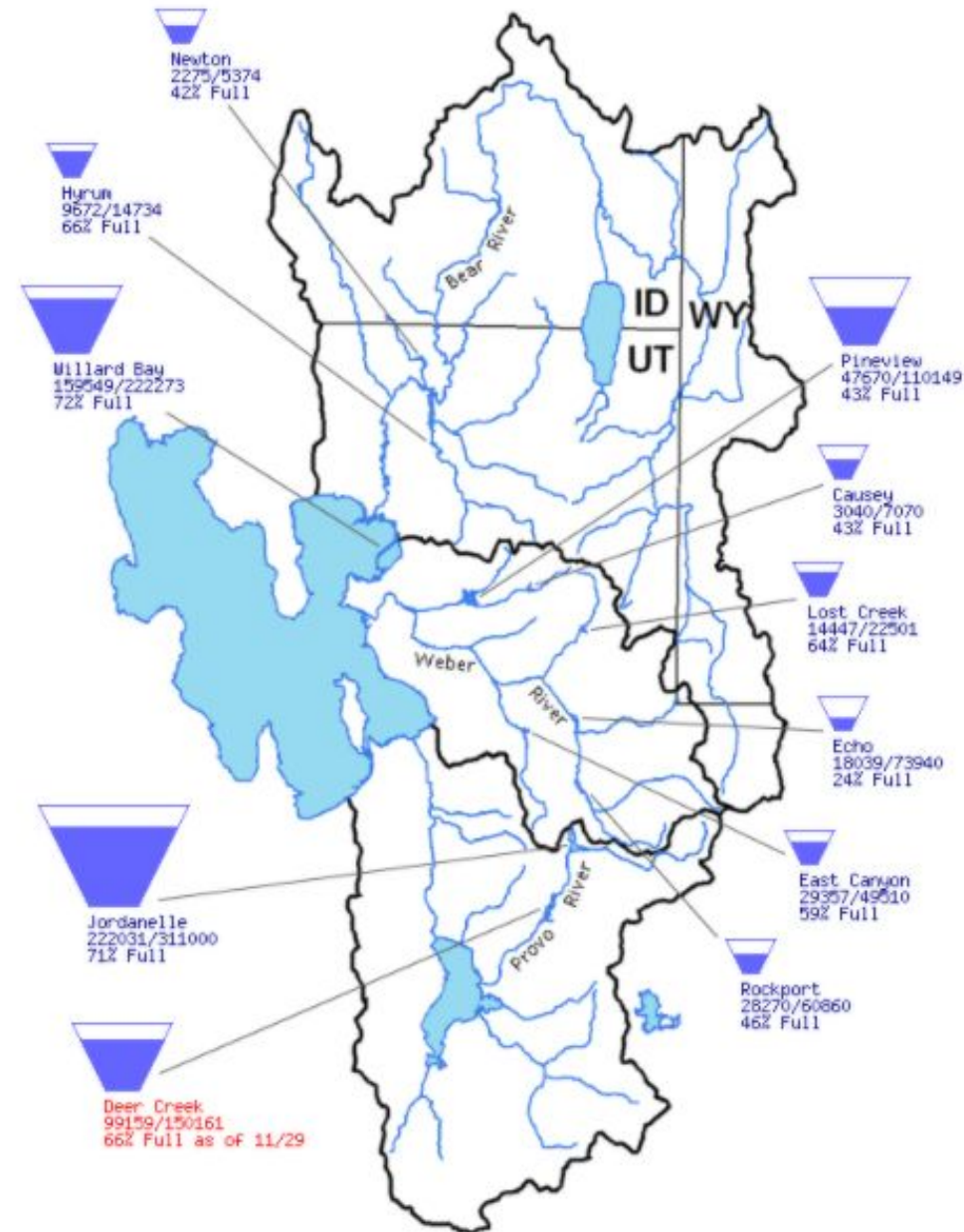
8" sensor depth

SNOTEL & SCAN sites



Data Current as of:
11/30/2020

Bear, Weber, and Provo River Basins



In the last month

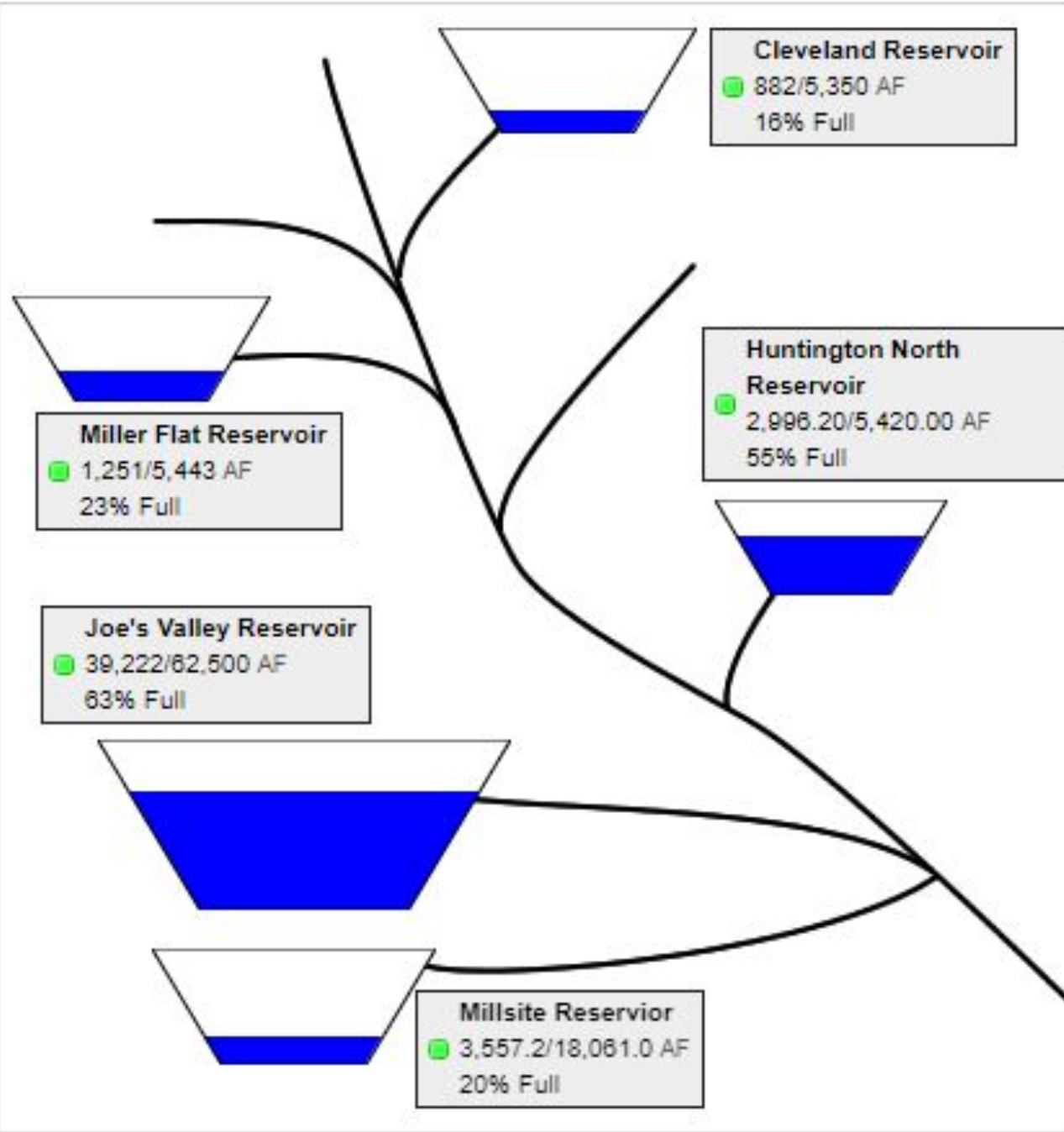
Bear River Basin: reservoirs have gone up 2-10%

Weber River Basin: Rockport and Pineview have gone up 2-3%
Other reservoirs have stayed the same or gone down

Provo River Basin: Jordanelle and Deer Creek have gone up 2-3%

In the last month

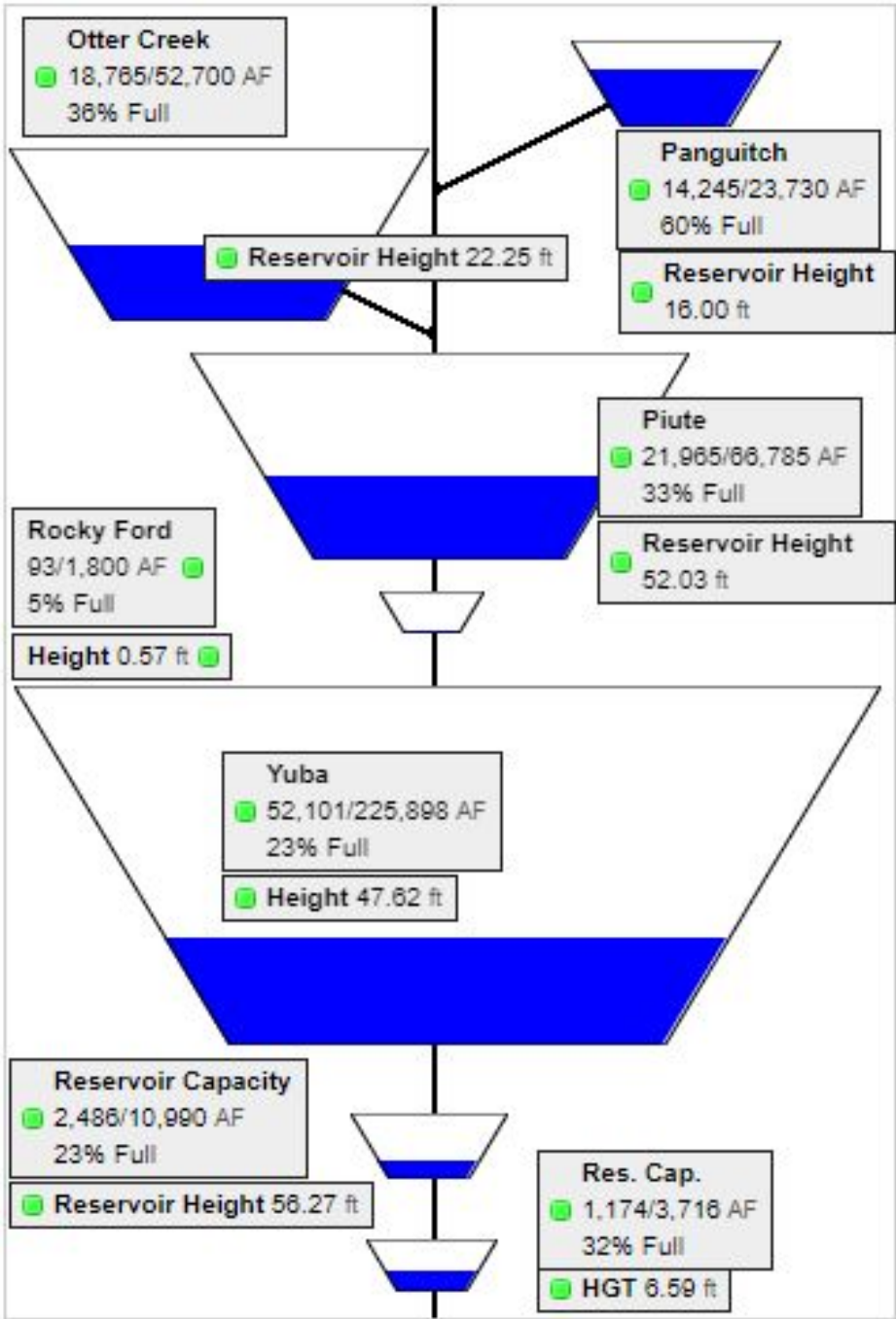
Huntington North has gone up 9%
Remaining basin storage has stayed
about the same



In the last month

Basin storage has gone from 93,545 to 110,829 AF

Increase of approximately 18%

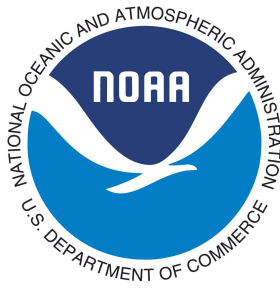
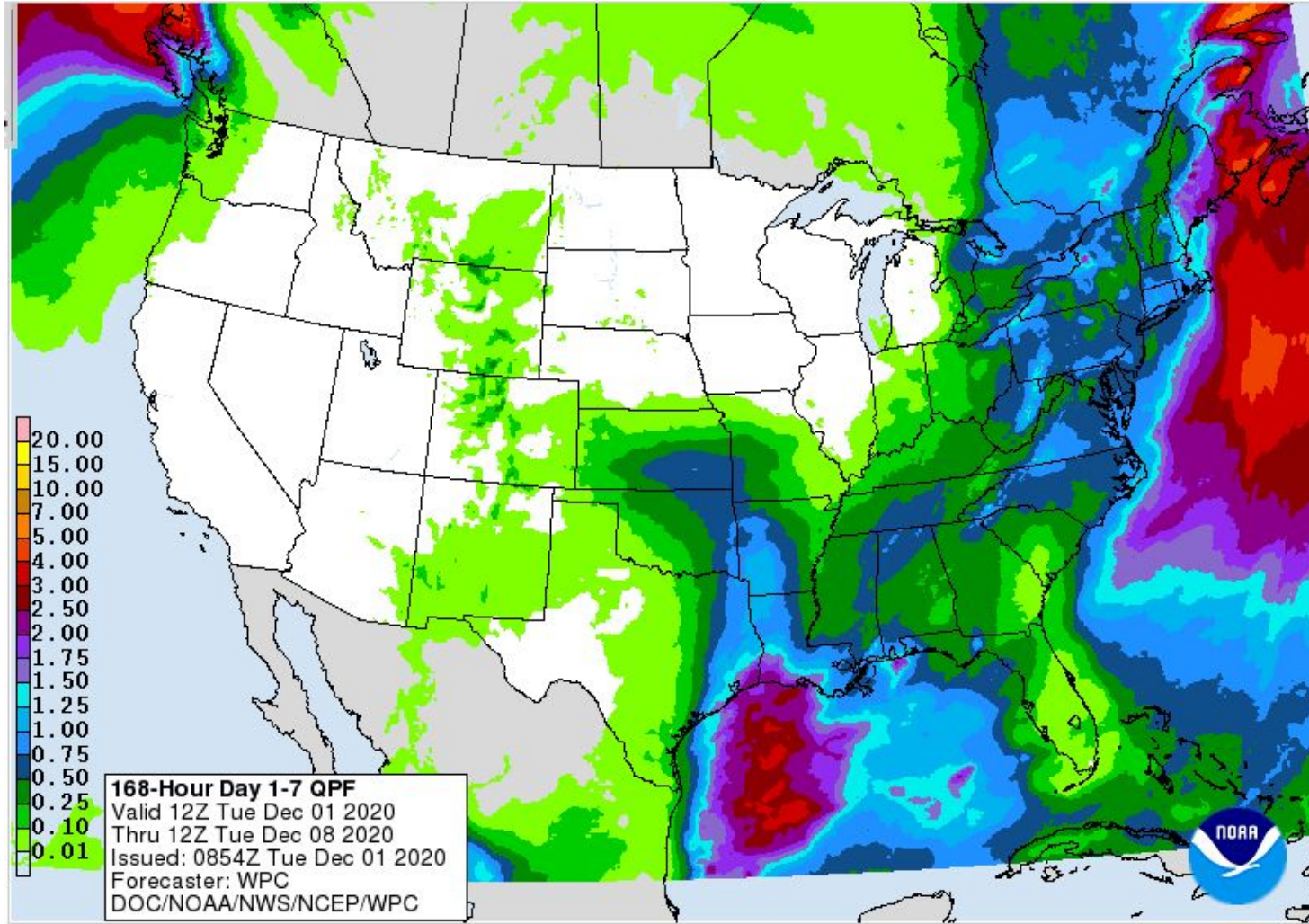


Weather Forecast Office Utah Day 1-7 Outlook

Quantitative Precipitation Forecasts [Legacy Page:](#)

Valid 12Z 12/01/2020 - 12Z 12/08/2020

Day 1 Day 2 Day 3 Day 4 Day 5 Day 6 Day 7 | Total: Day 1-2 Day 1-3 Day 1-5 Day 1-7



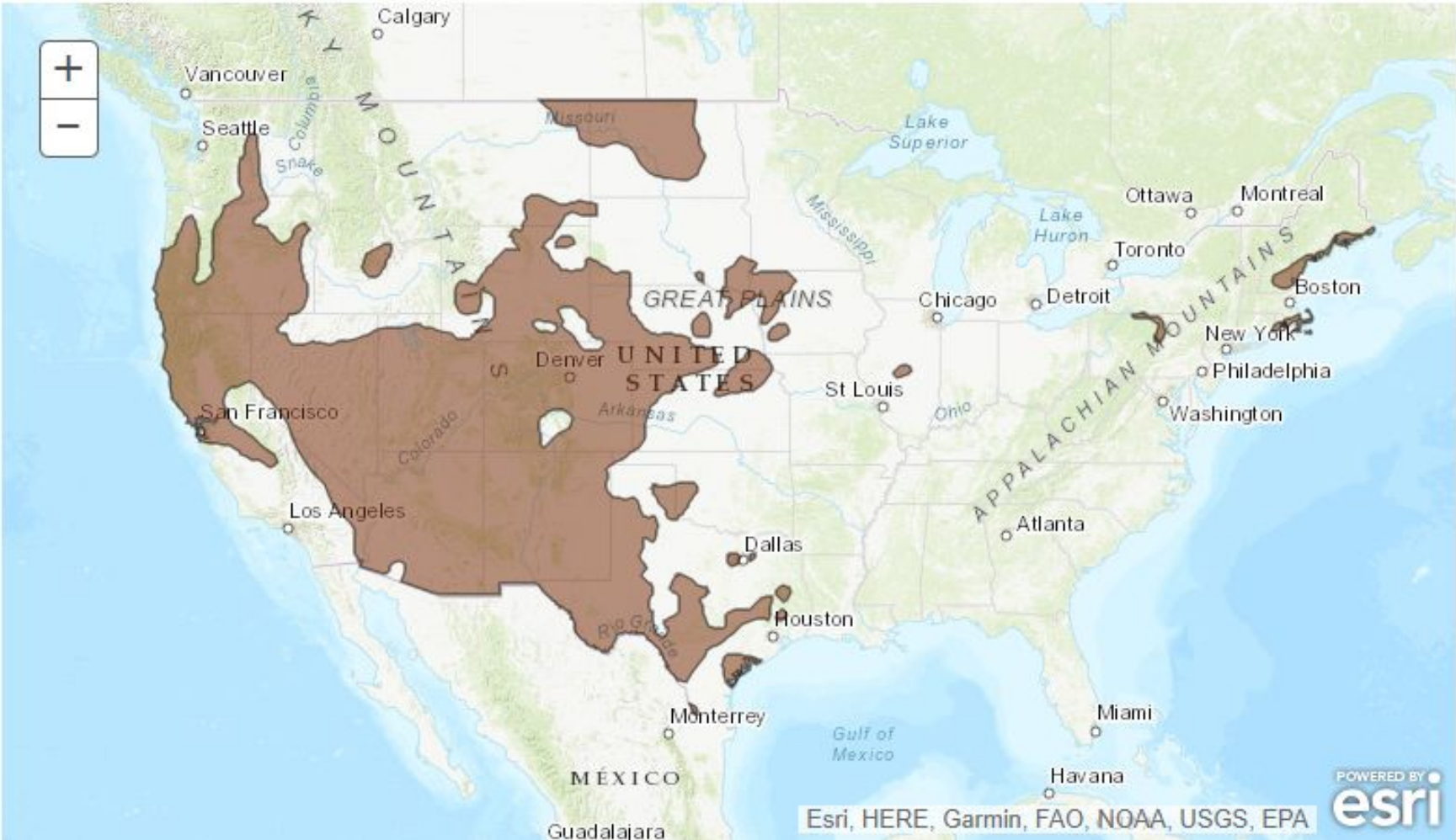
Agency - National Weather Service Weather Forecast Office

Presenter - Jeff Colton

Weather Prediction Center U.S. Day 3-7 Hazards Outlook

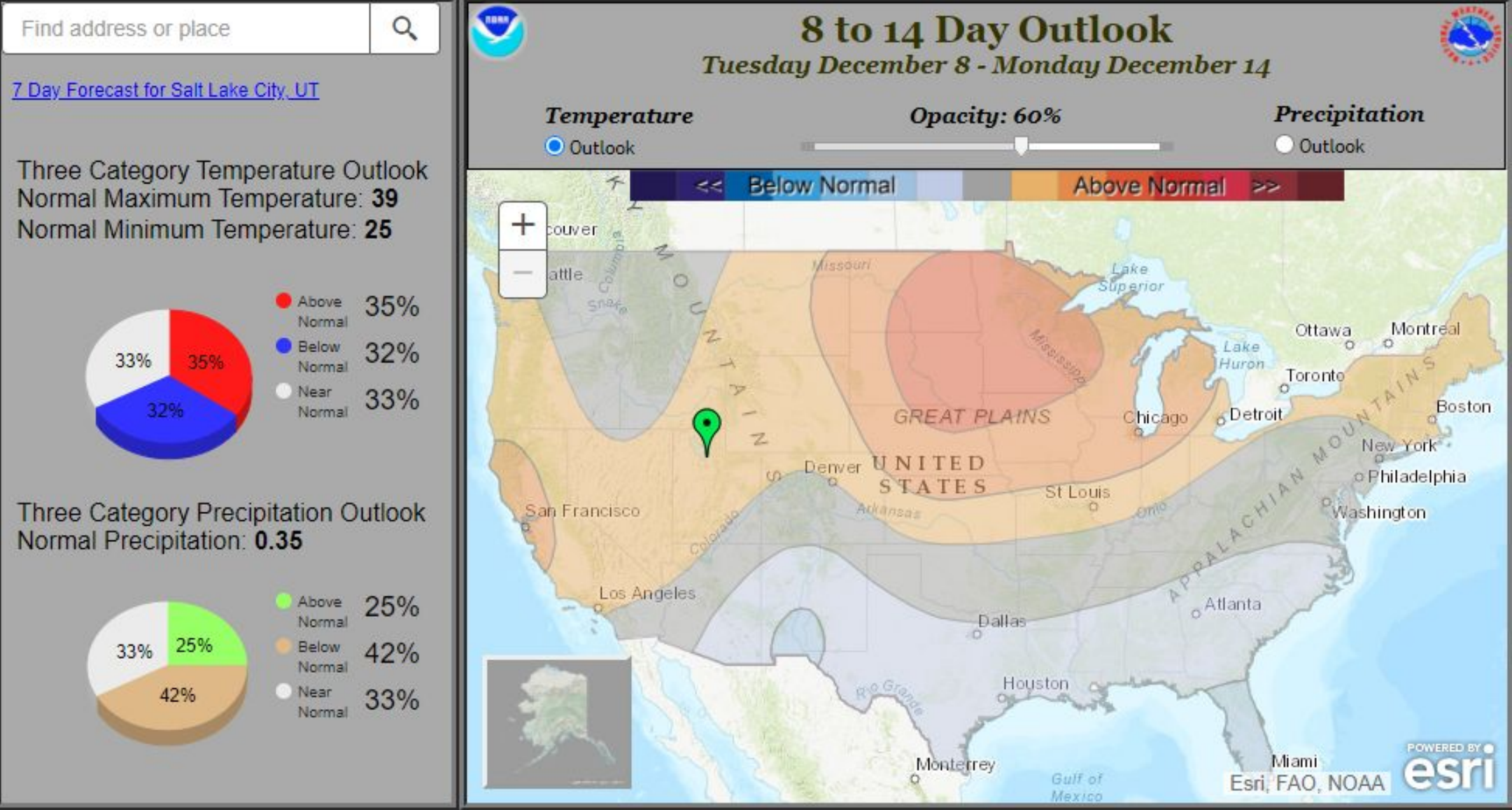


Valid December 03, 2020 - December 07, 2020

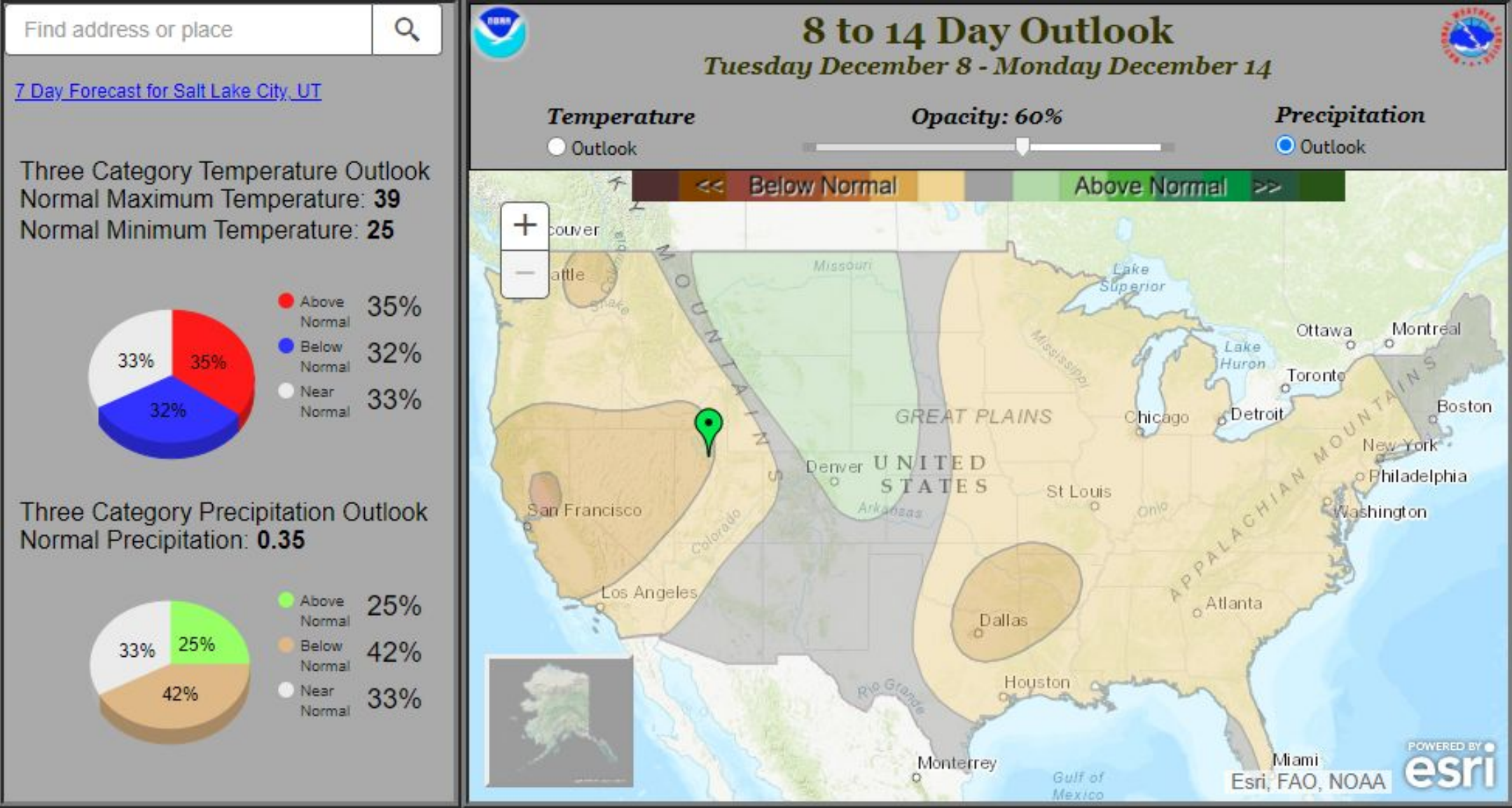
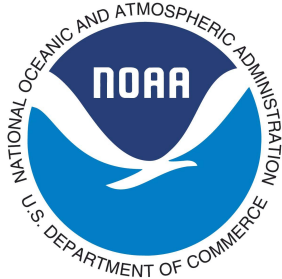


Legend	
Flooding Likely	Excessive Heat
Flooding Occurring or Imminent	High Winds
Flooding Possible	Much Above Normal Temperatures
Freezing Rain	Much Below Normal Temperatures
Heavy Ice	Significant Waves
Heavy Precipitation	Enhanced Wildfire Risk
Heavy Rain	Severe Drought
Heavy Snow	
Severe Weather	

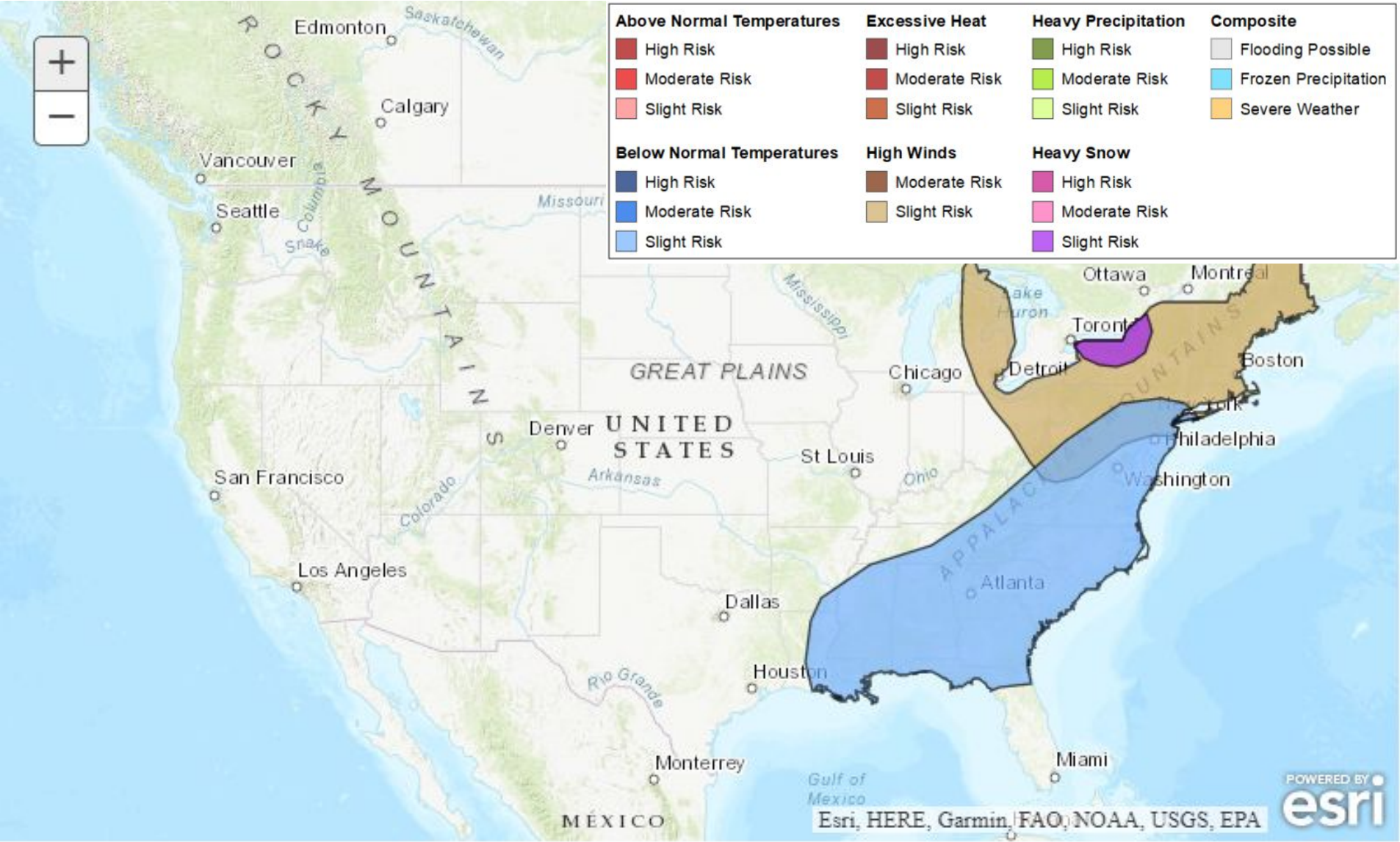
Climate Prediction Center 8 to 14 Day Outlooks - Temperature



Climate Prediction Center 8 to 14 Day Outlooks - Precipitation



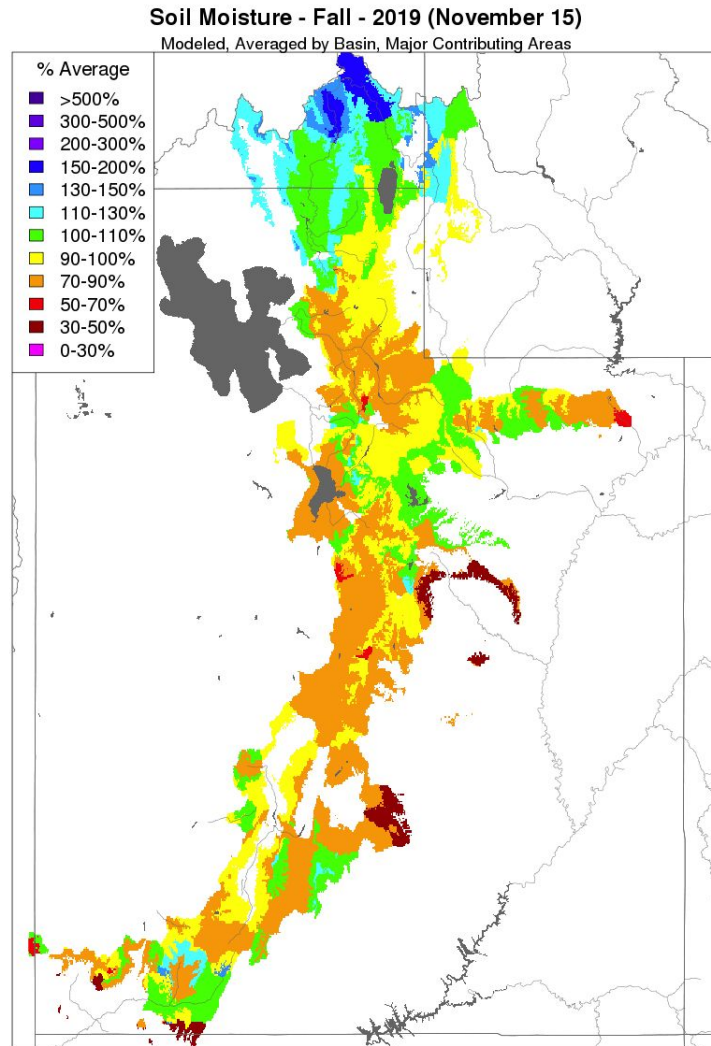
Climate Prediction Center U.S. Week-2 Hazards Outlook



Modelled Soil Moisture Set - Winter 2020/2021 Water Supply

Start of WY 2020

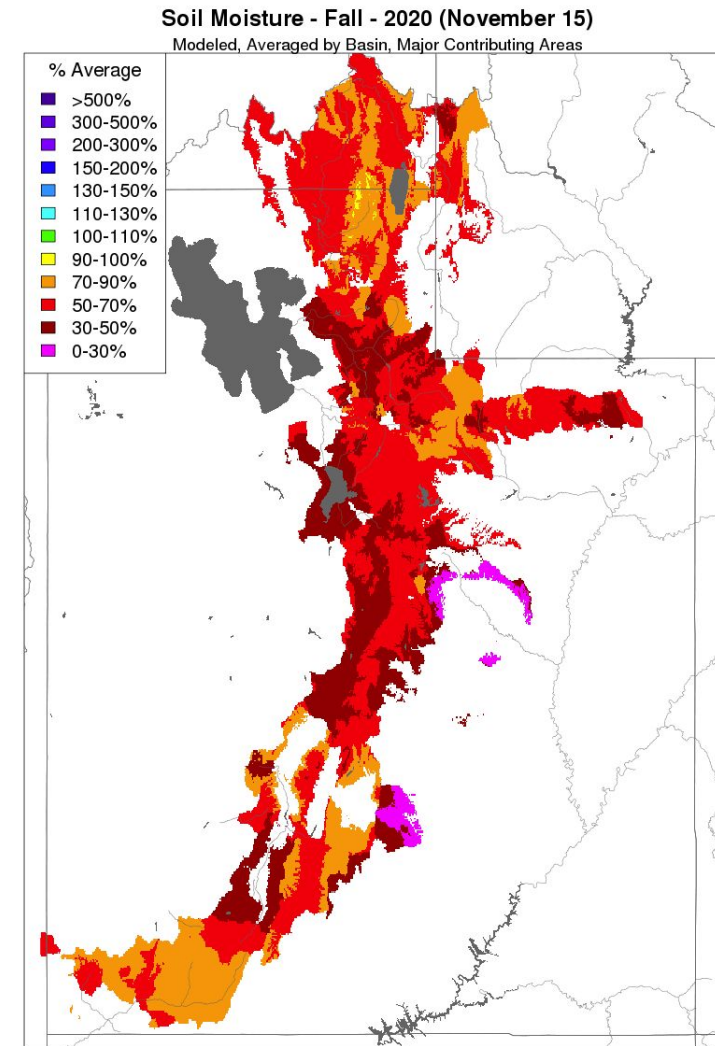
Start of WY 2021



Prepared by NOAA, Colorado Basin River Forecast Center
Salt Lake City, Utah, www.cbrfc.noaa.gov

LEFT: Last year even with good carryover soil moisture initializations a dry fall, resulted in below average forecasts and ultimately runoff. With these states, January 1, 2020 forecast for spring runoff were between 10-20% below average.

RIGHT: Given the current states, WY 2021, initial outlooks suggest even larger departures from average runoff when we begin forecasting January 1, 2021



Prepared by NOAA, Colorado Basin River Forecast Center
Salt Lake City, Utah, www.cbrfc.noaa.gov

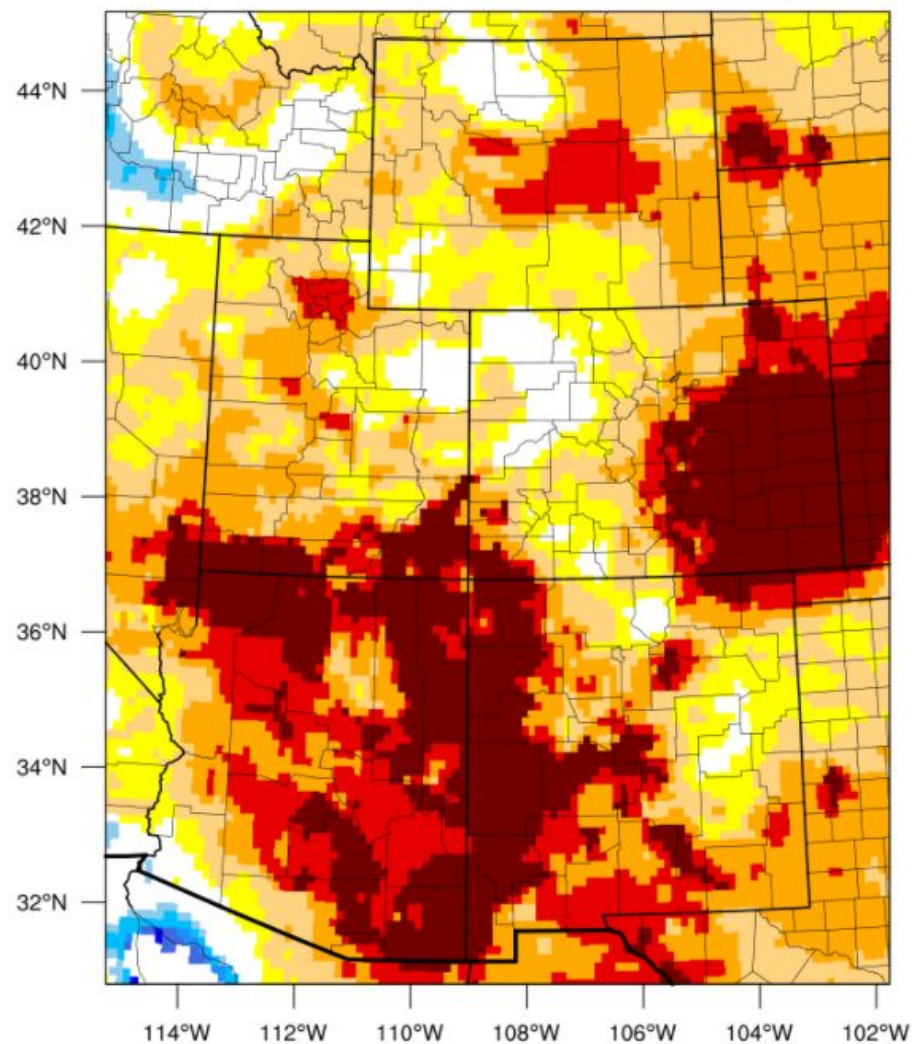


Drought Monitoring and Reporting in Utah: building a network for drought response

**December 4
10am - Noon**

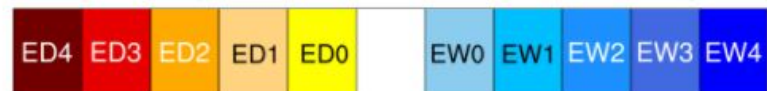
email drought@utah.gov to register

4-week EDDI categories for November 26, 2020



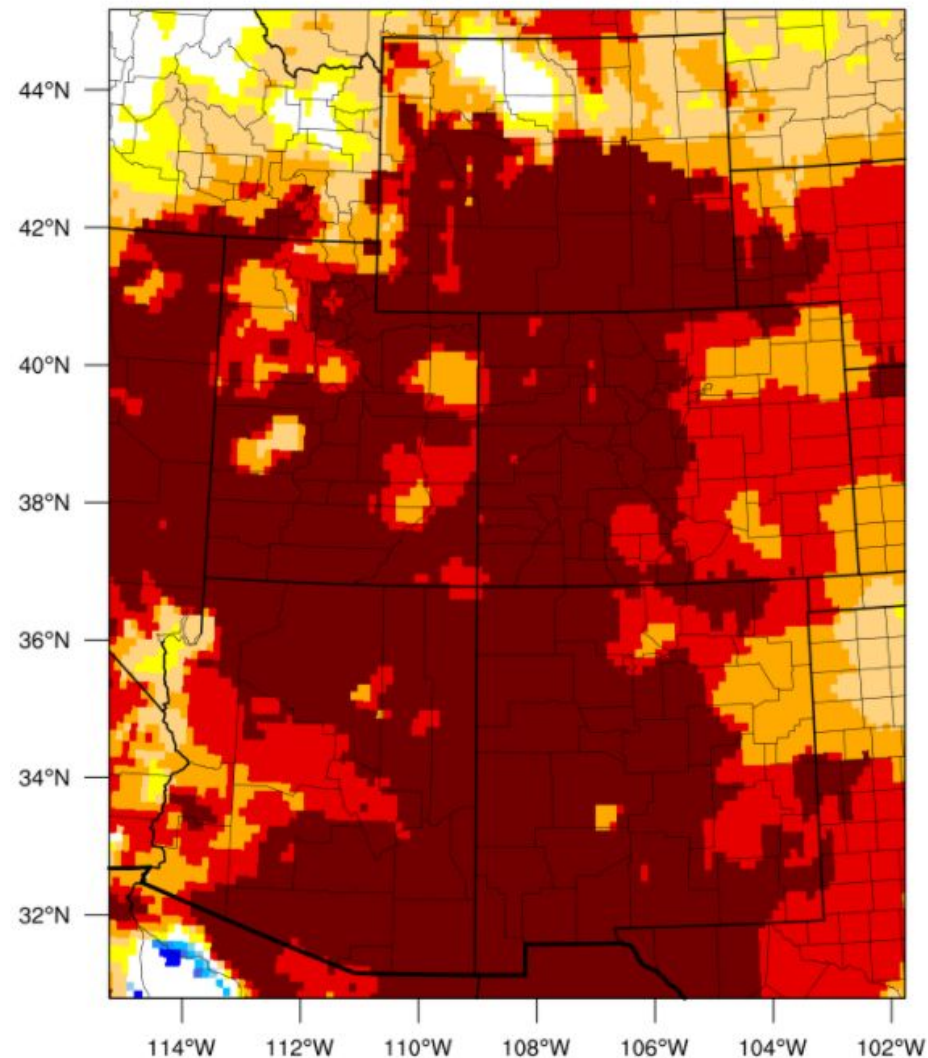
Drought categories

Wetness categories



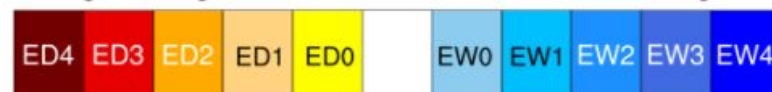
100% 98% 95% 90% 80% 70% 30% 20% 10% 5% 2% 0%
(EDDI-percentile category breaks: 100% = driest; 0% = wettest)

3-month EDDI categories for November 26, 2020



Drought categories

Wetness categories



100% 98% 95% 90% 80% 70% 30% 20% 10% 5% 2% 0%
(EDDI-percentile category breaks: 100% = driest; 0% = wettest)

Generated by
NOAA/ESRL/Physical
Sciences Laboratory

