



Utah Drought Monitor Webinar

The meeting will begin shortly



Thank you to our contributors

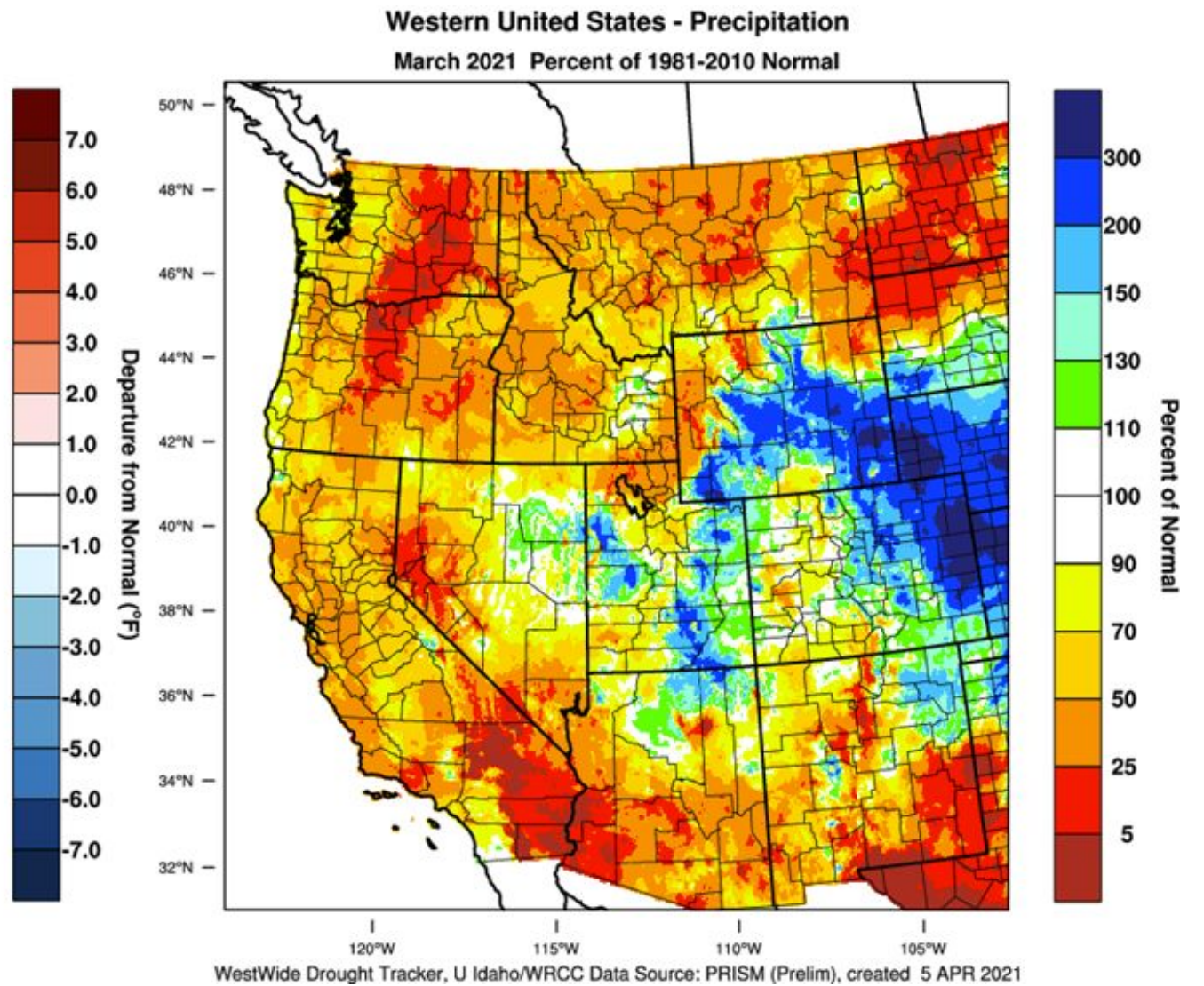
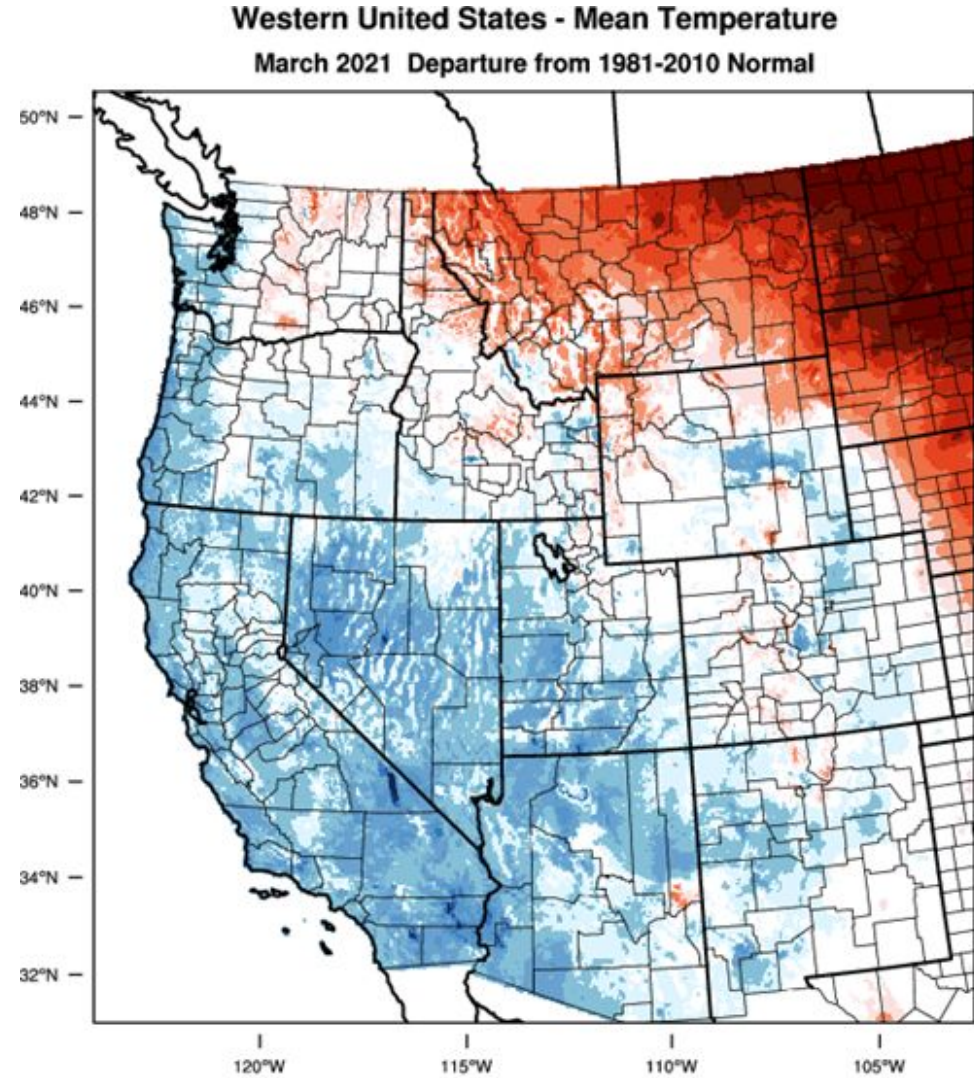




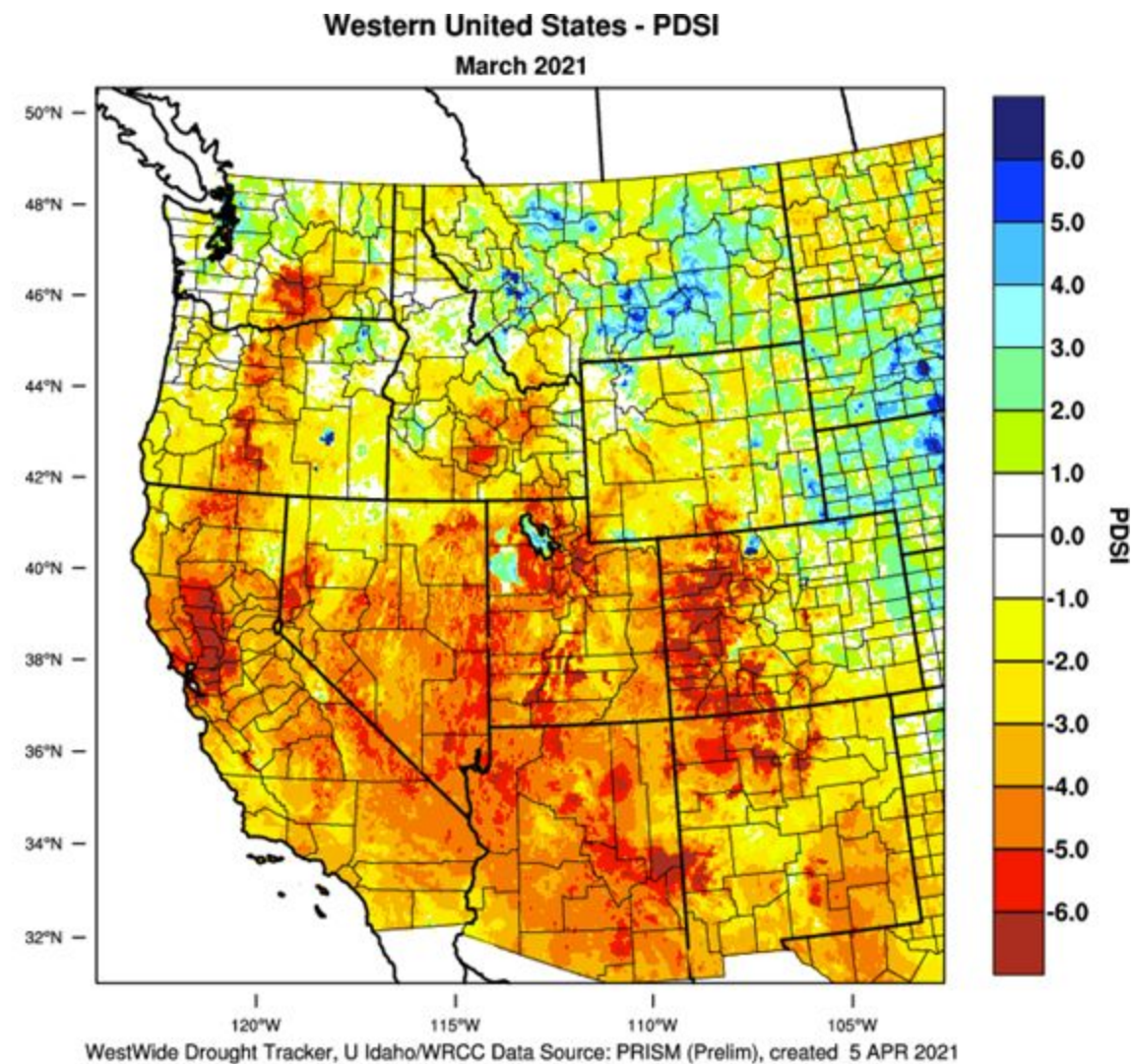
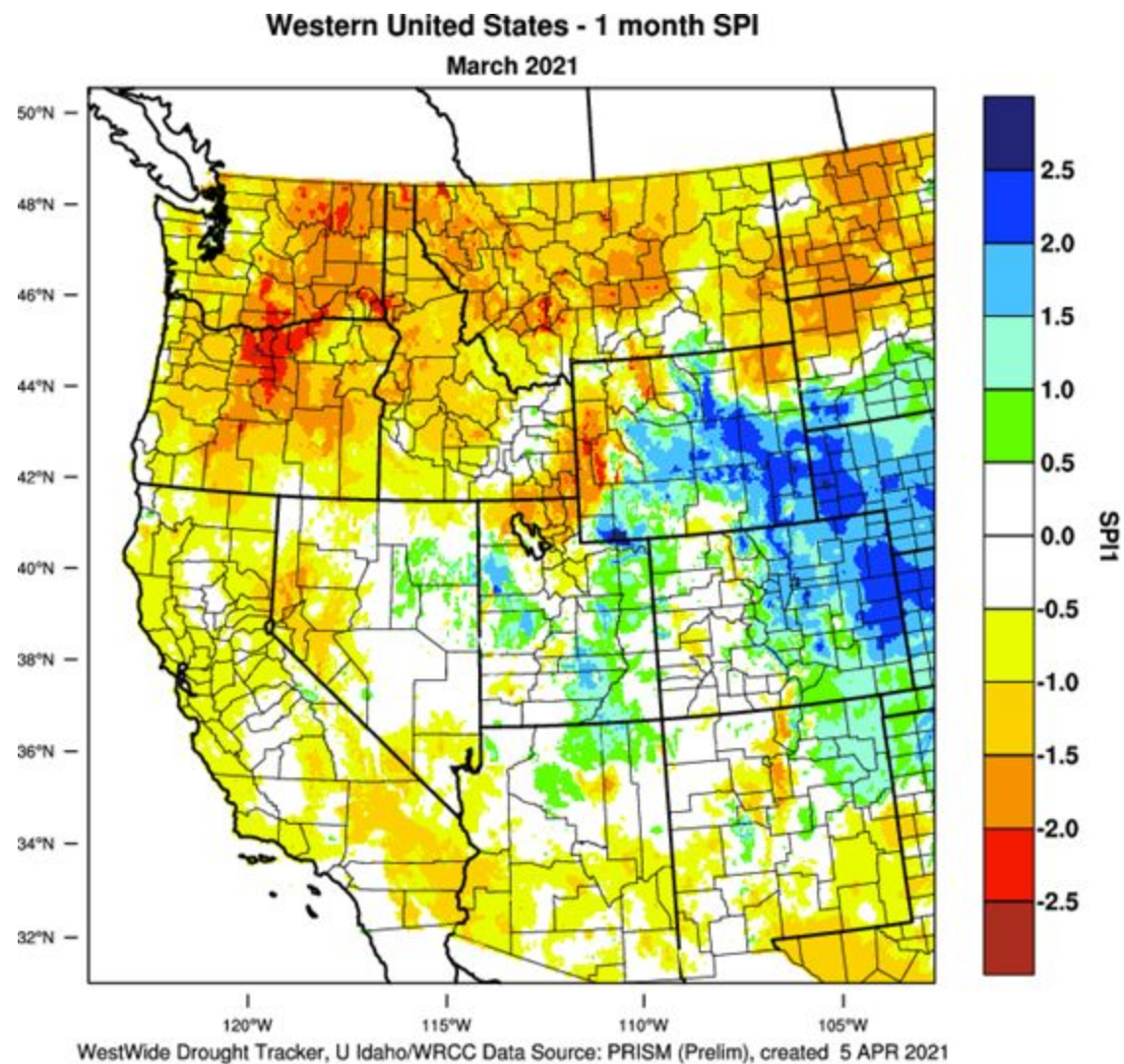
Utah Drought Monitor Webinar

April 6, 2021

How did March turn out?

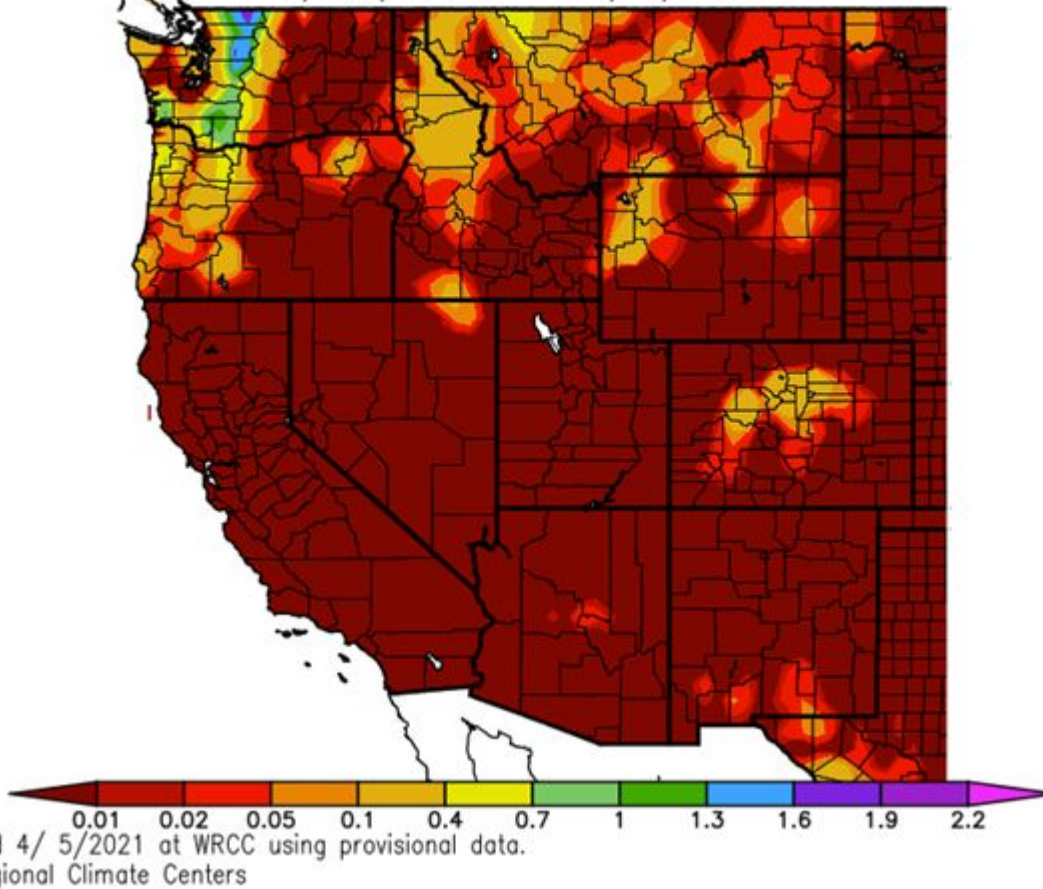


March Standardized Precip. Index + Palmer Drought Severity Index

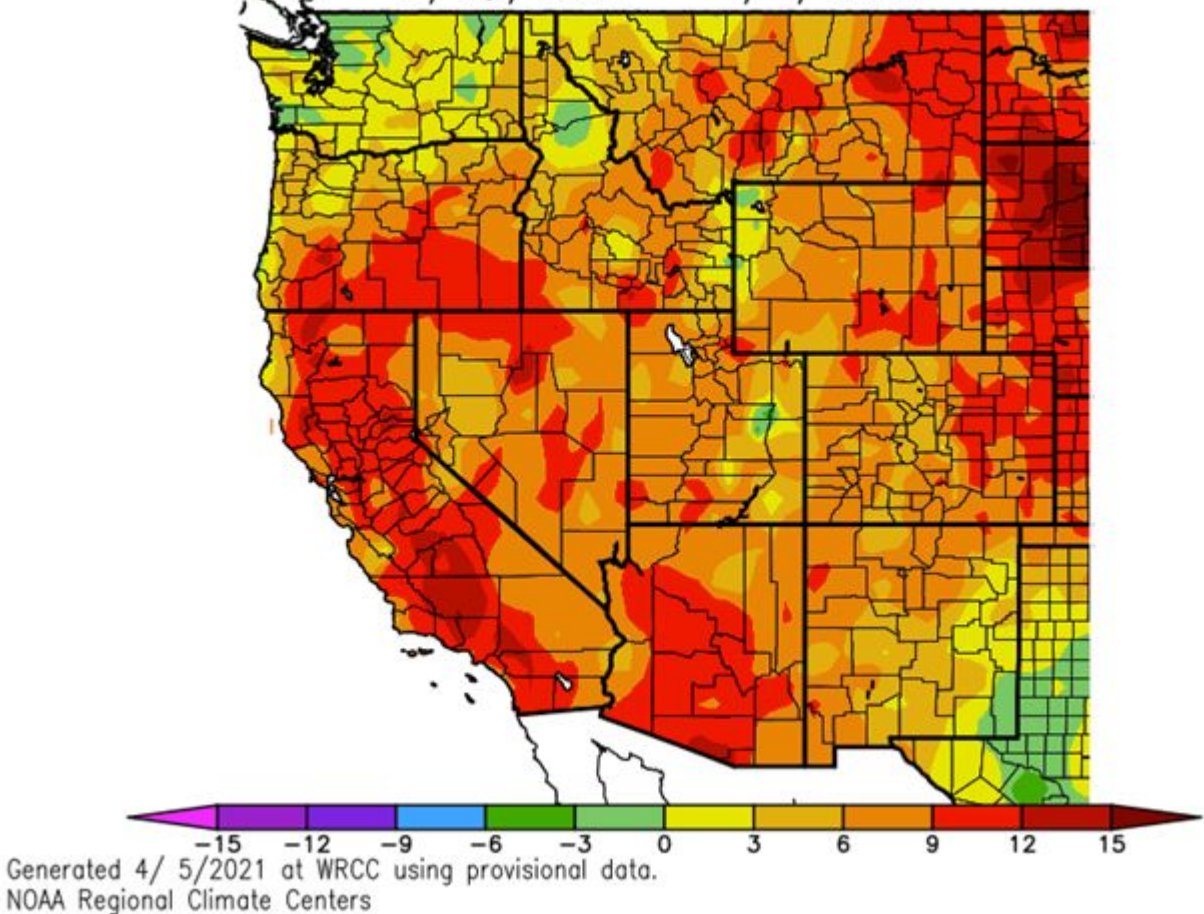


How has April started?

Total Precipitation (in.)
3/29/2021 – 4/4/2021

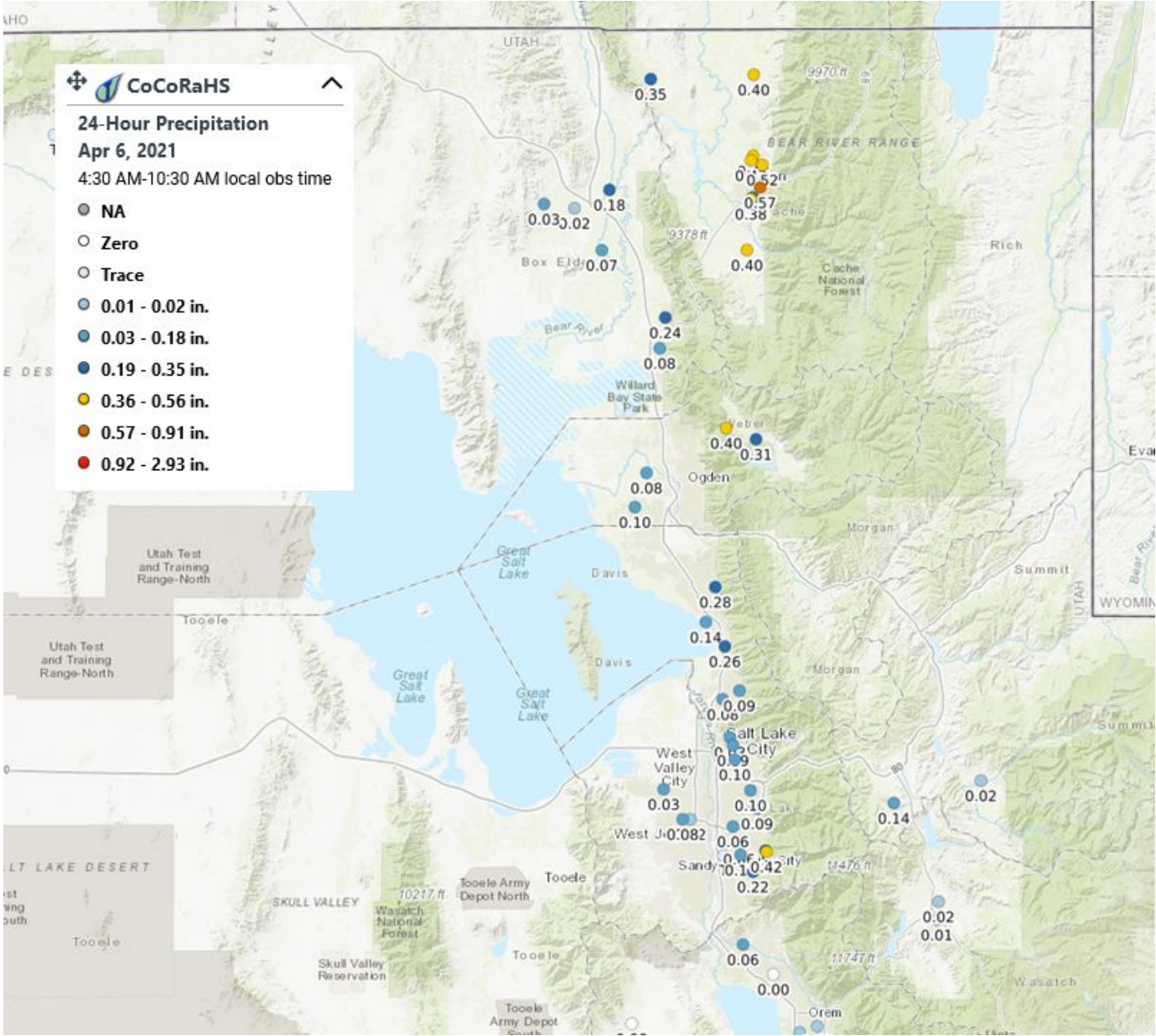


Av. Max. Temperature dep from Ave (deg F)
3/29/2021 – 4/4/2021



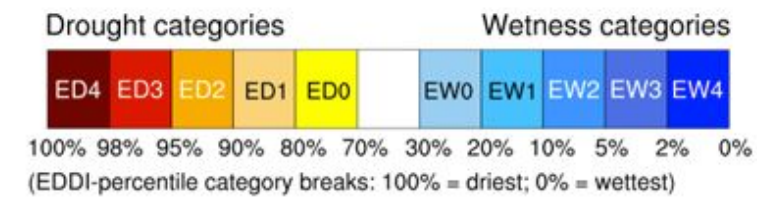
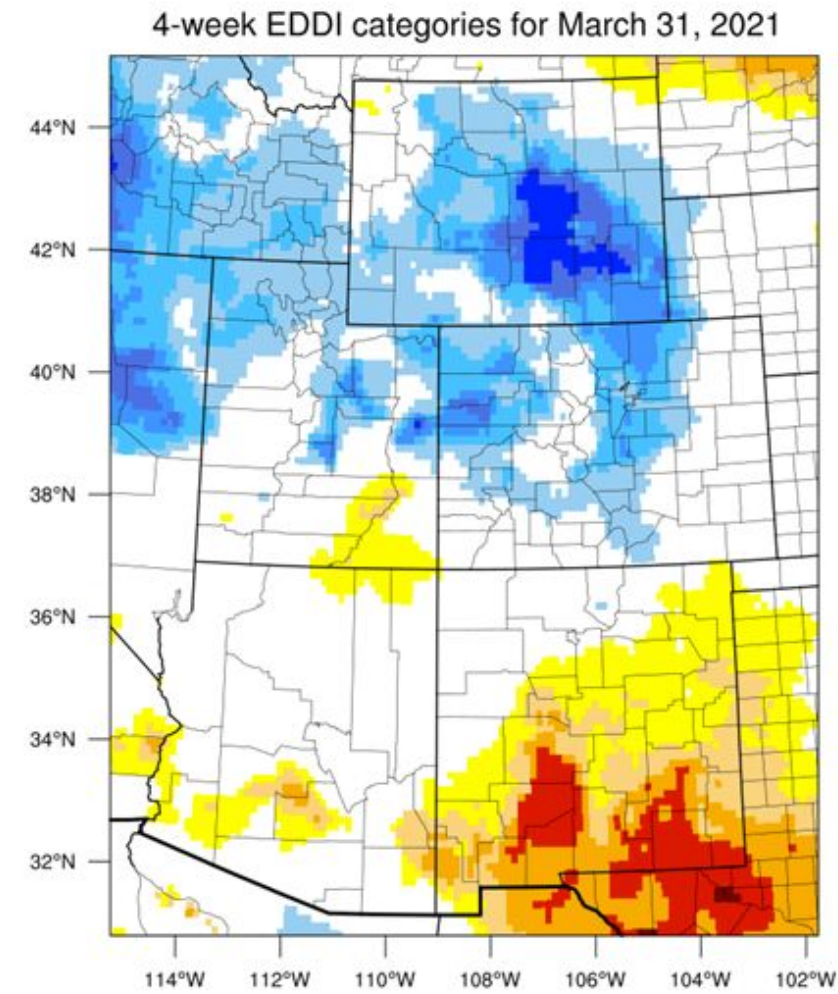
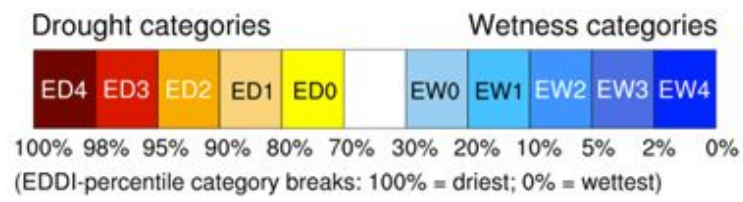
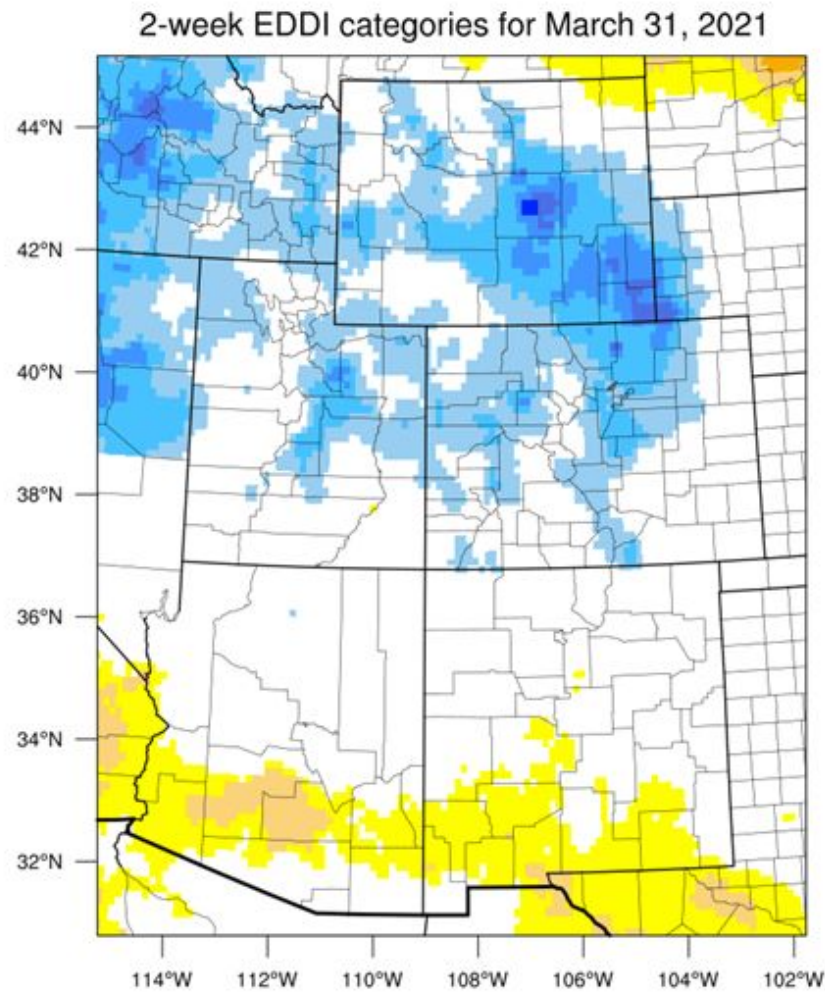
April Showers

Last 24-hour CoCoRaHS reports



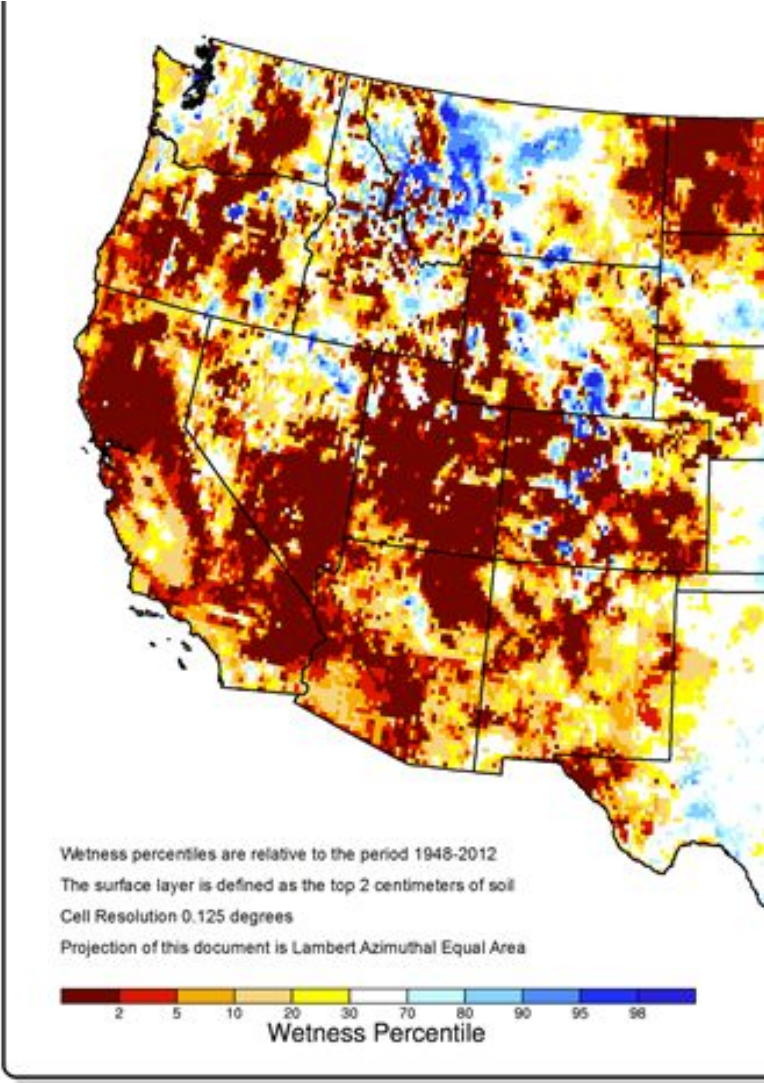
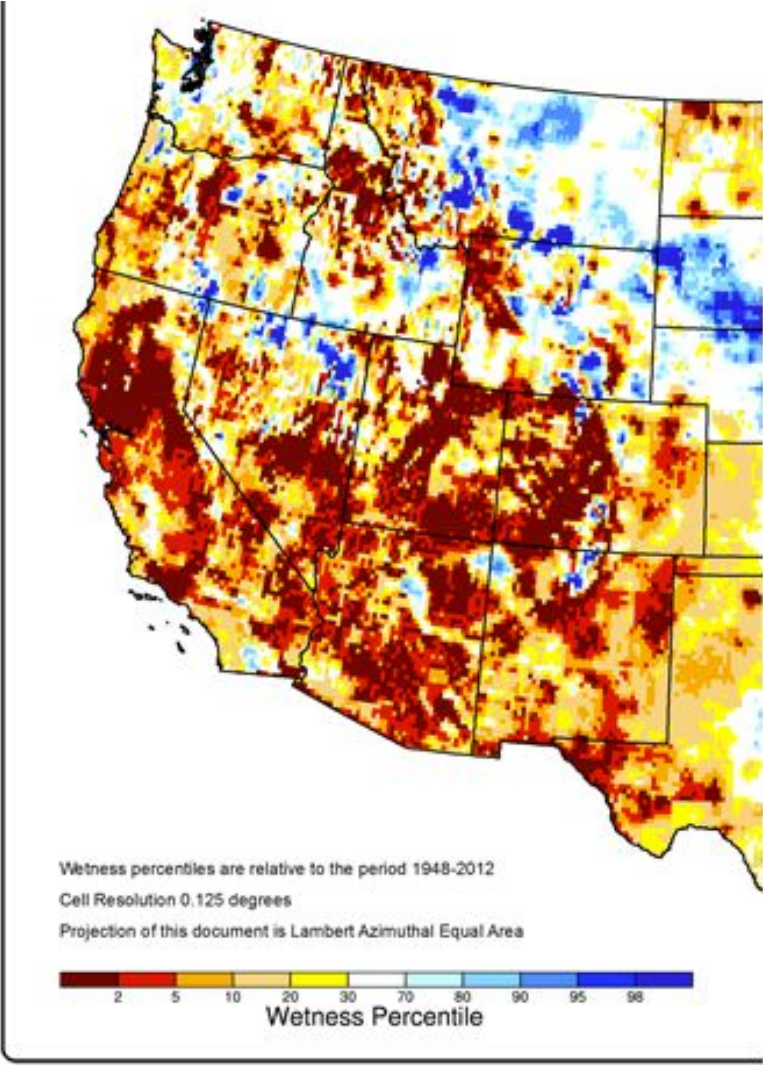
Agency - Utah Climate Center
Presenter - Jon Meyer

Recent Evaporative Demand



Satellite-based Soil Moisture Measurements

Shallow Ground Water vs Surface Soil Moisture

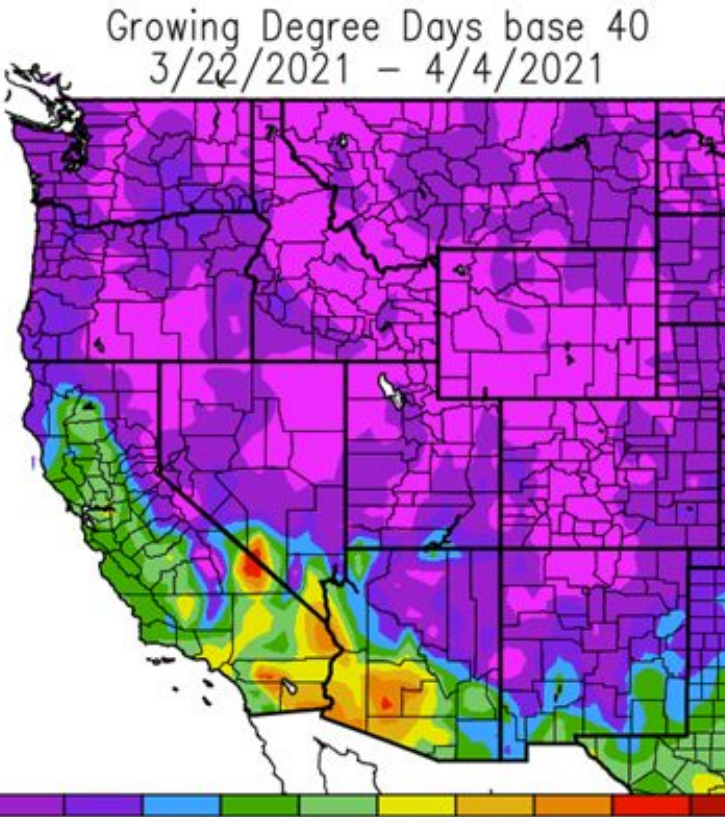


Entering the growing season

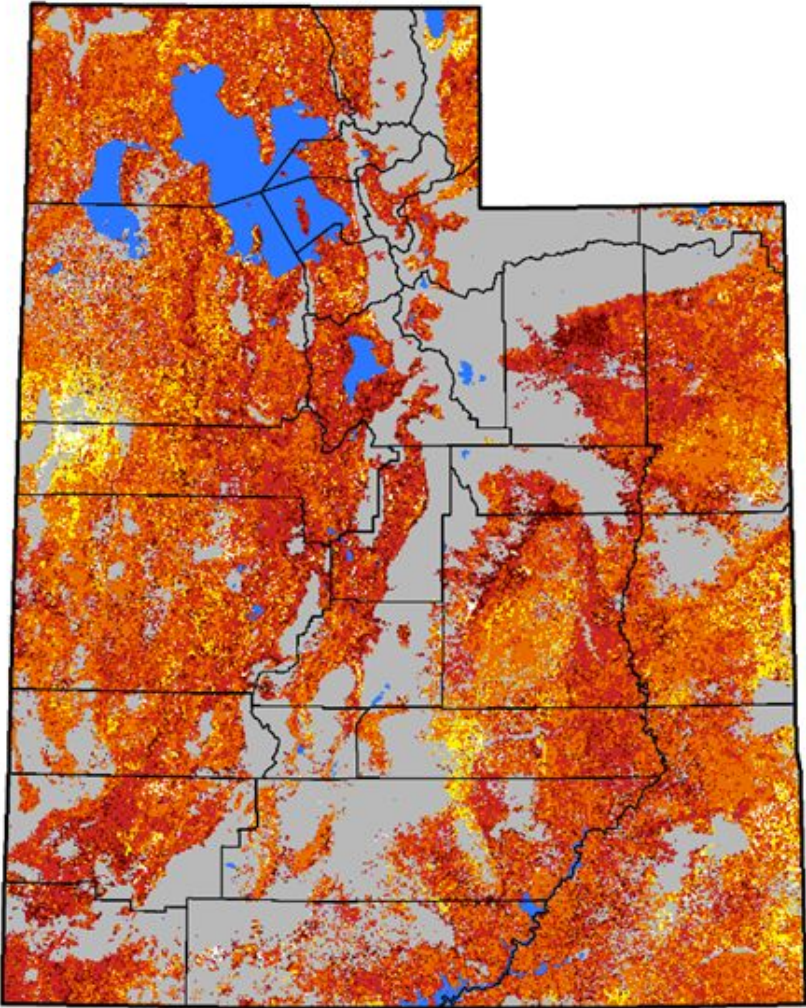
Vegetation Drought Response Index

Complete: Utah

April 4, 2021



Generated 4/ 5/2021 at WRCC using provisional data.
NOAA Regional Climate Centers



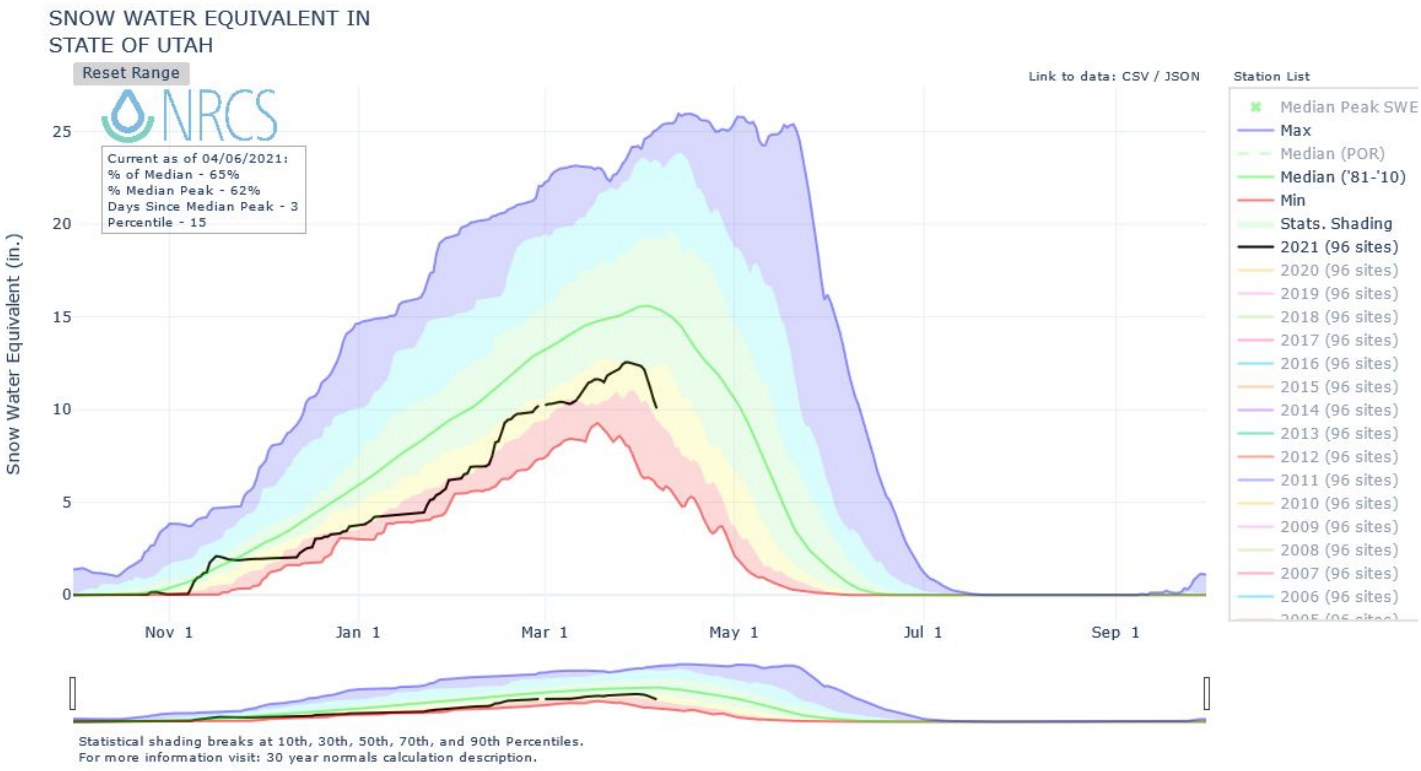
Vegetation Condition

- Extreme Drought
- Severe Drought
- Moderate Drought
- Pre-drought stress
- Near Normal
- Unusually Moist
- Very Moist
- Extreme Moist
- Out of Season
- Water

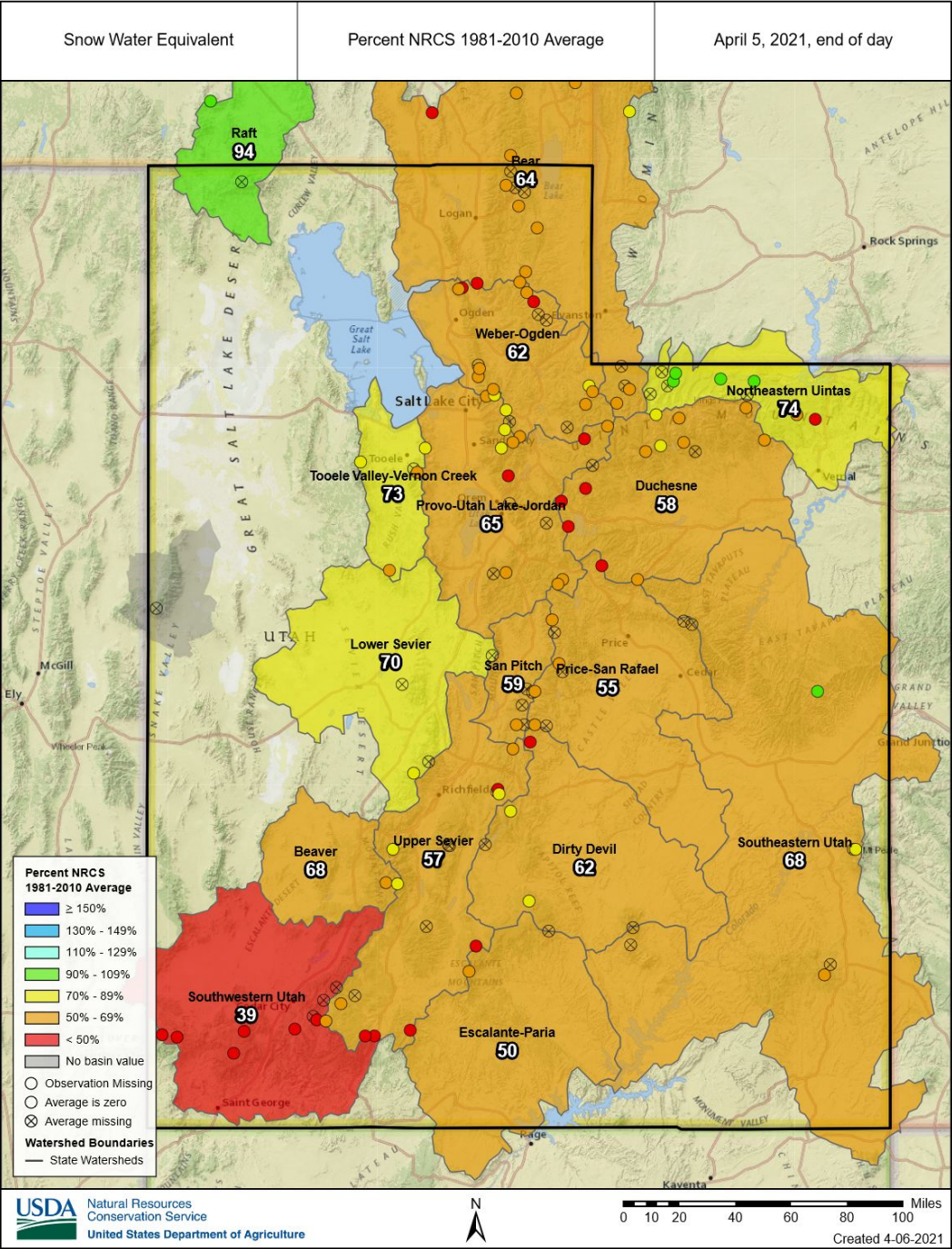


Agency - Utah Climate Center
Presenter - Jon Meyer

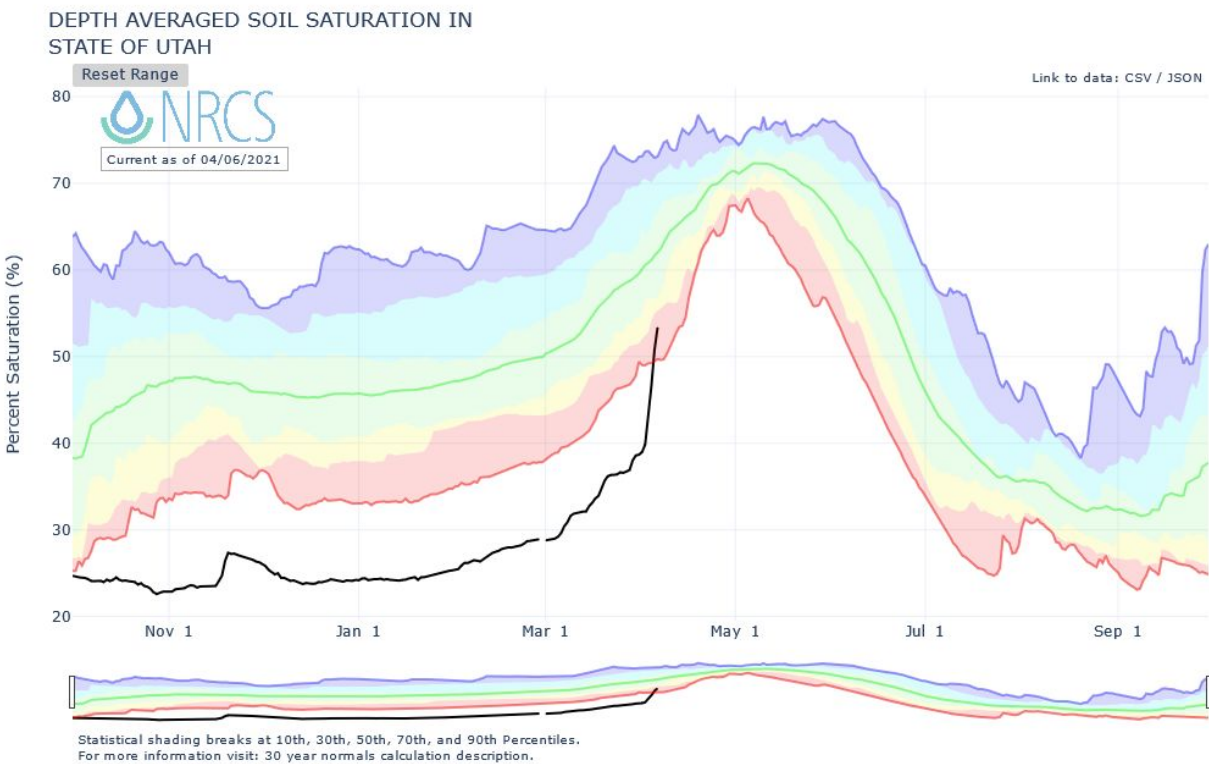
Snowpack



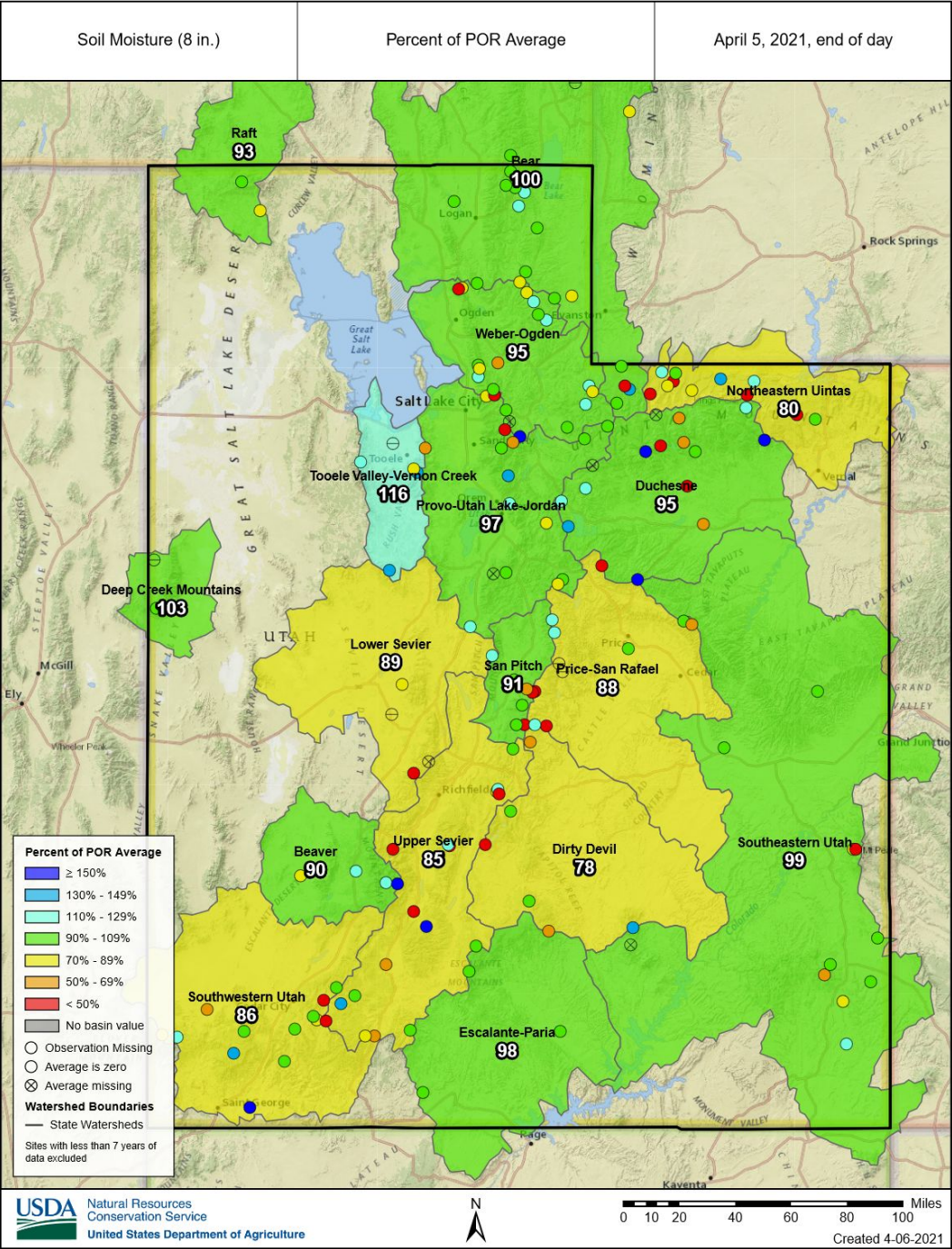
Agency - NRCS Snow Survey
Presenter - Jordan Clayton



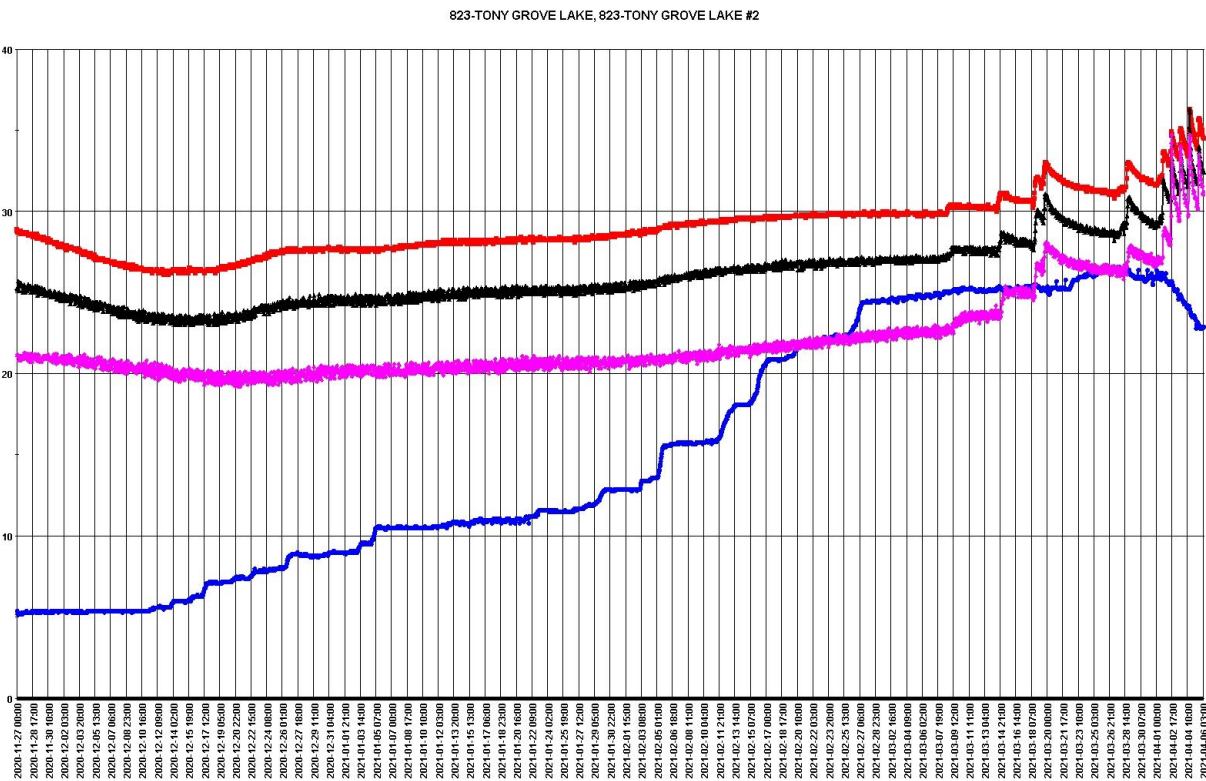
Soil Moisture (Current)



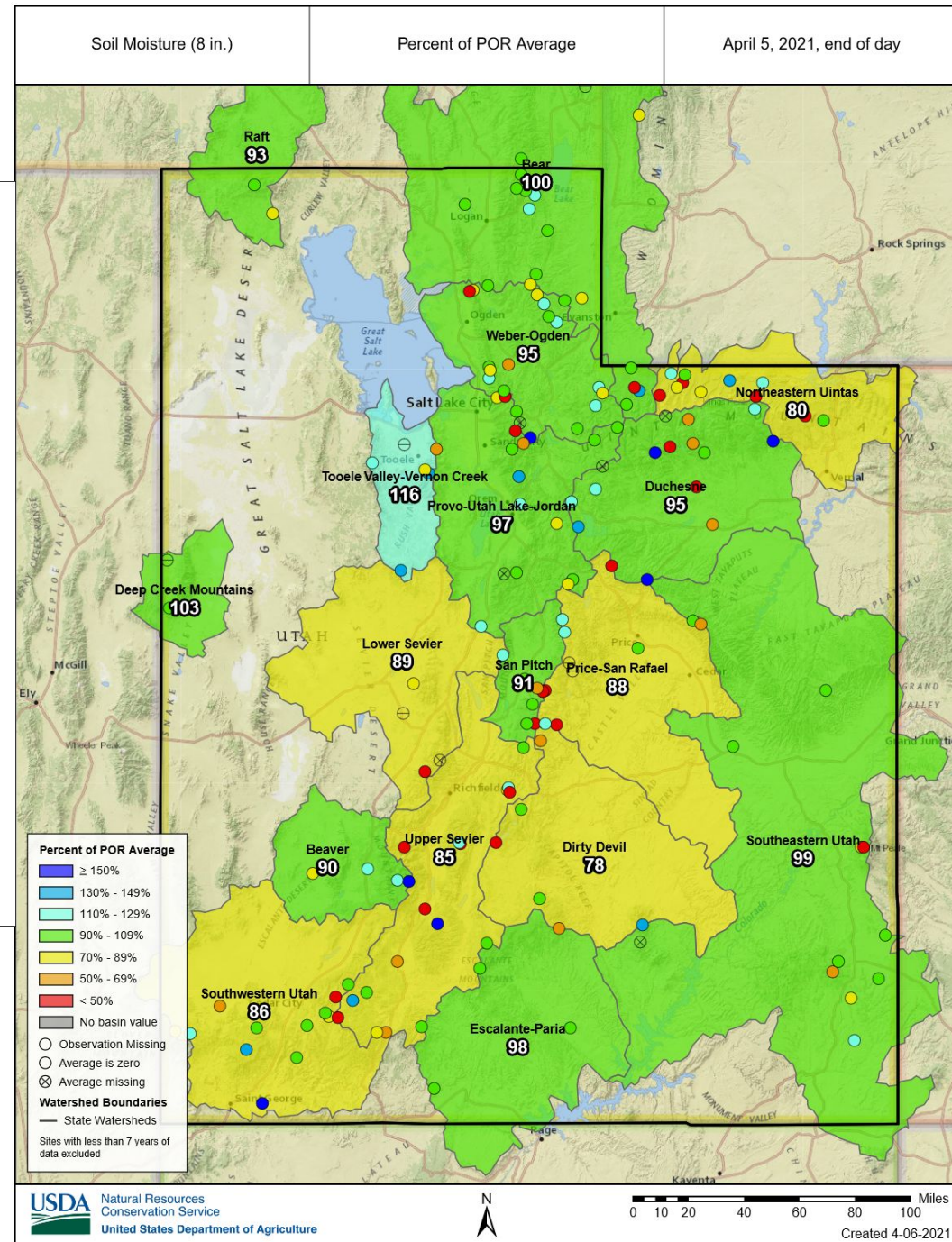
Agency - NRCS Snow Survey
Presenter - Jordan Clayton



Soil Moisture (Current)



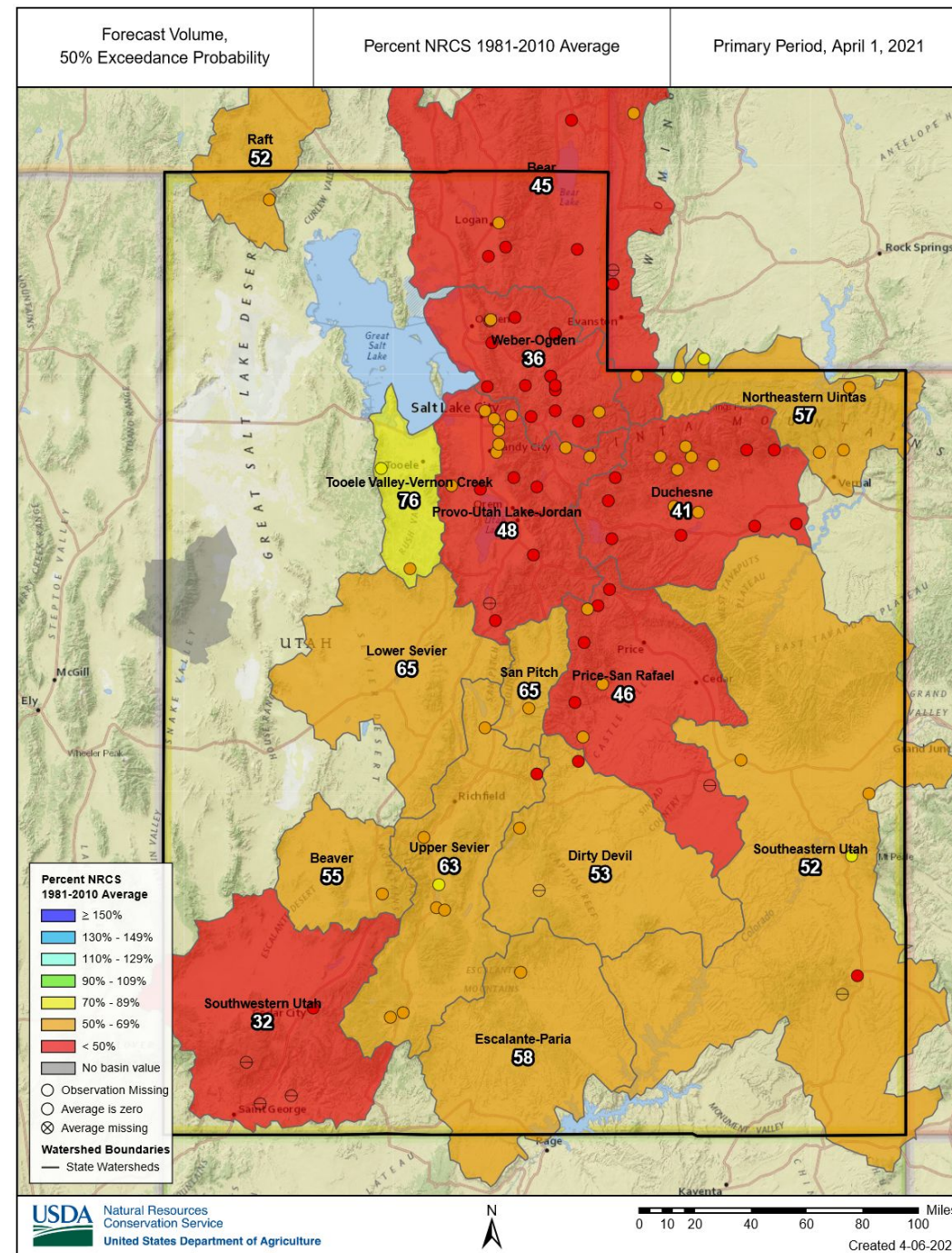
Agency - NRCS Snow Survey
Presenter - Jordan Clayton



Streamflow forecasts

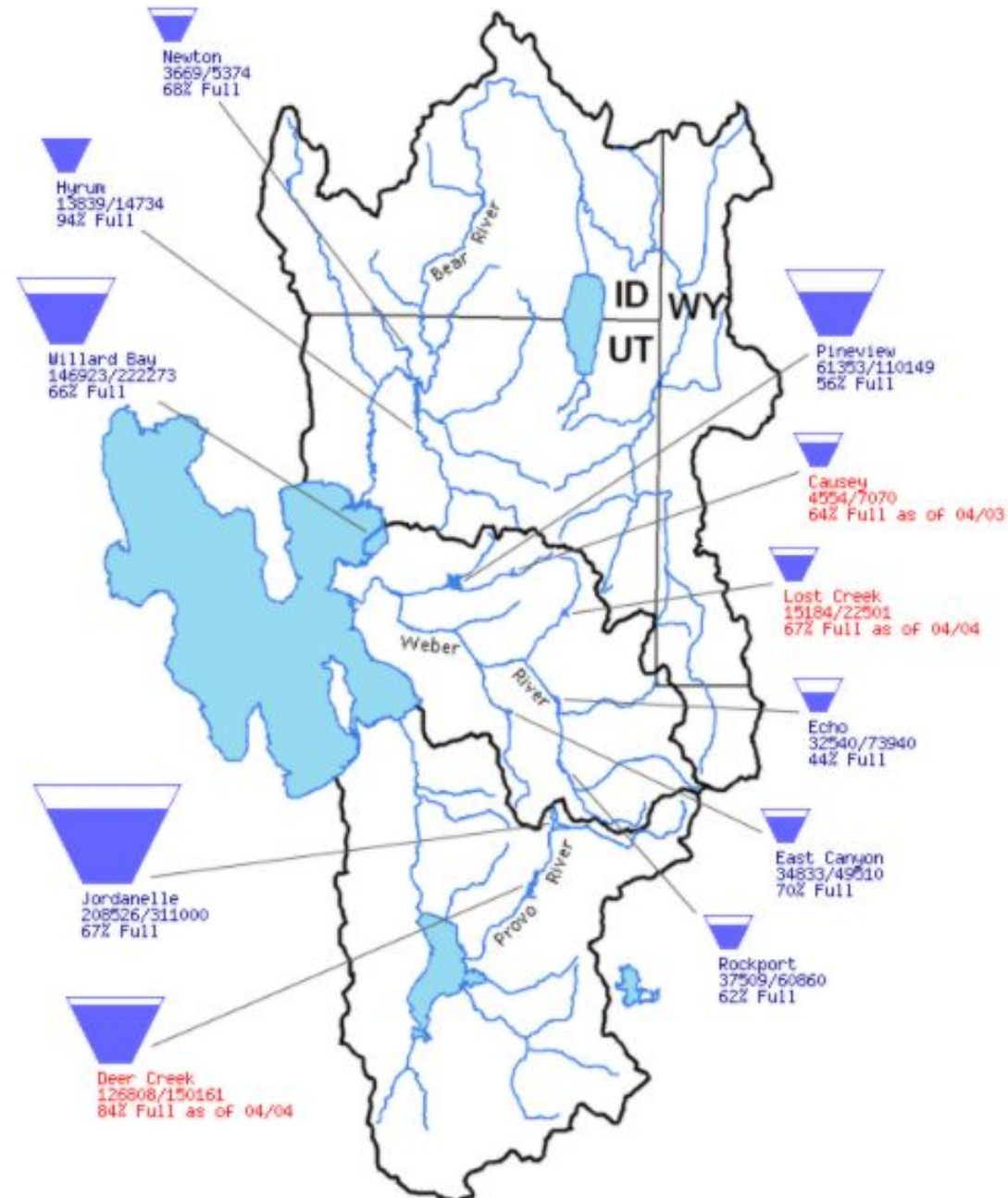
- CBRFC will present on Utah's runoff forecasts
- NRCS versions presented here to reinforce poor anticipated water supply conditions

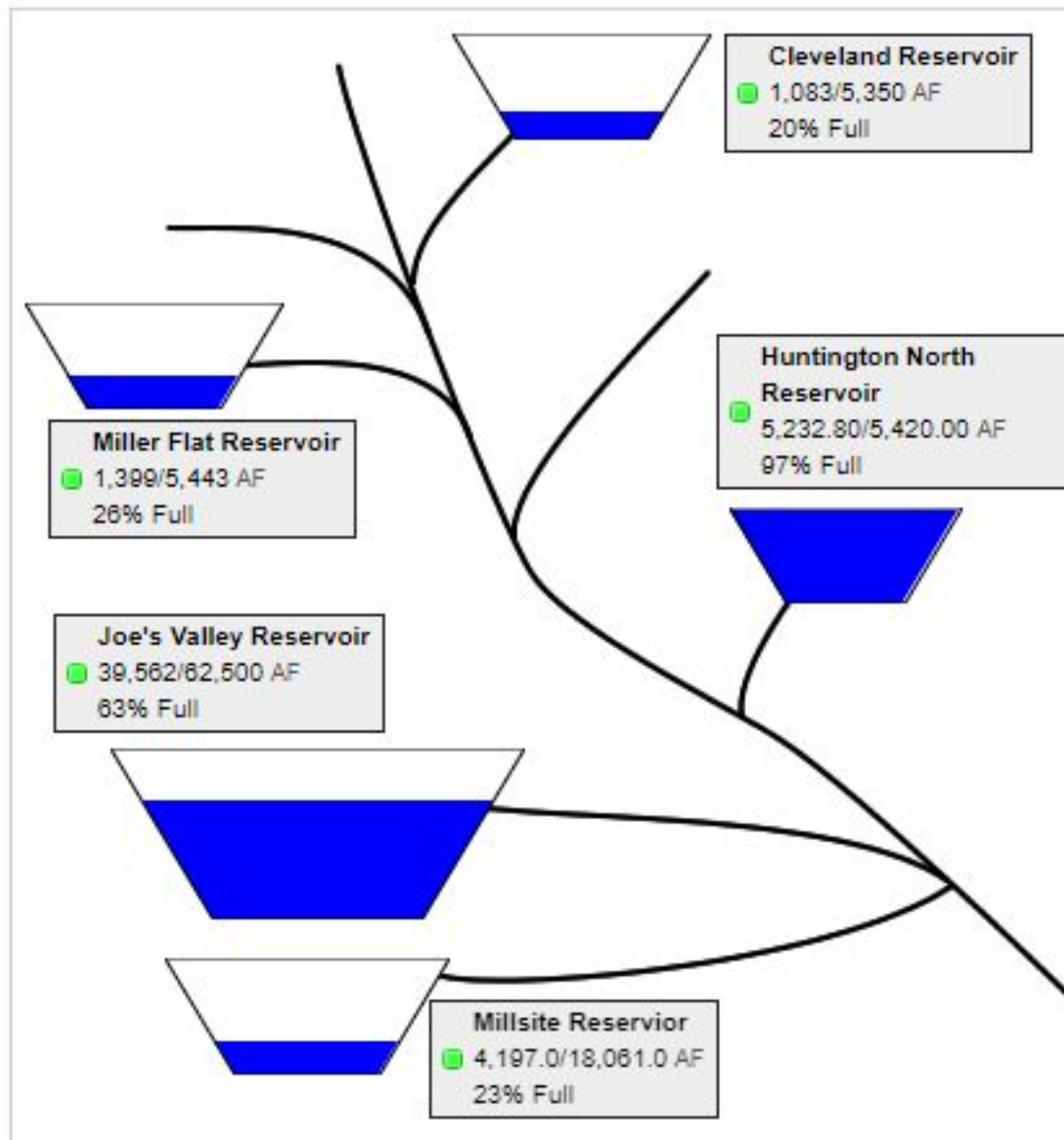
Agency - NRCS Snow Survey
Presenter - Jordan Clayton

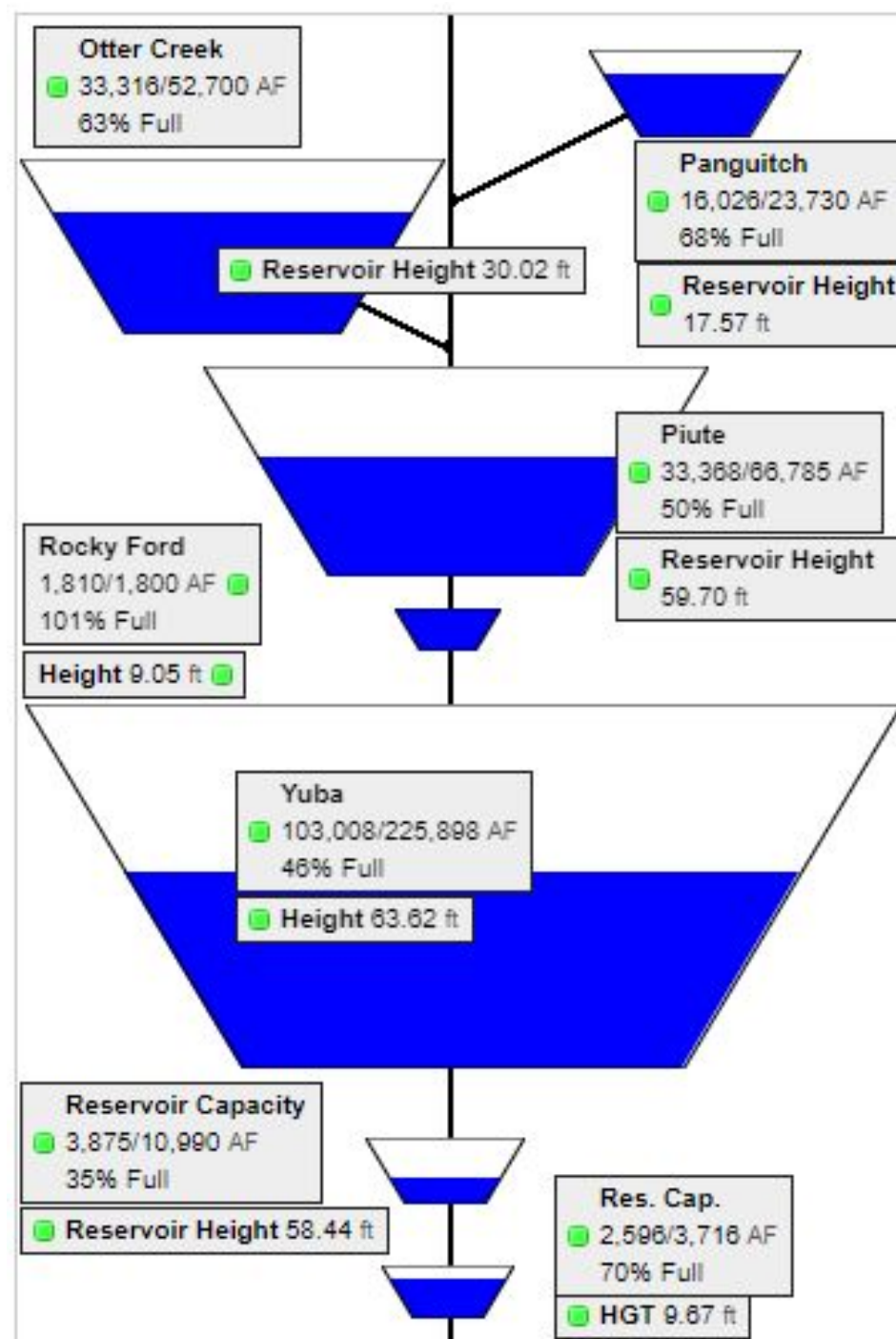


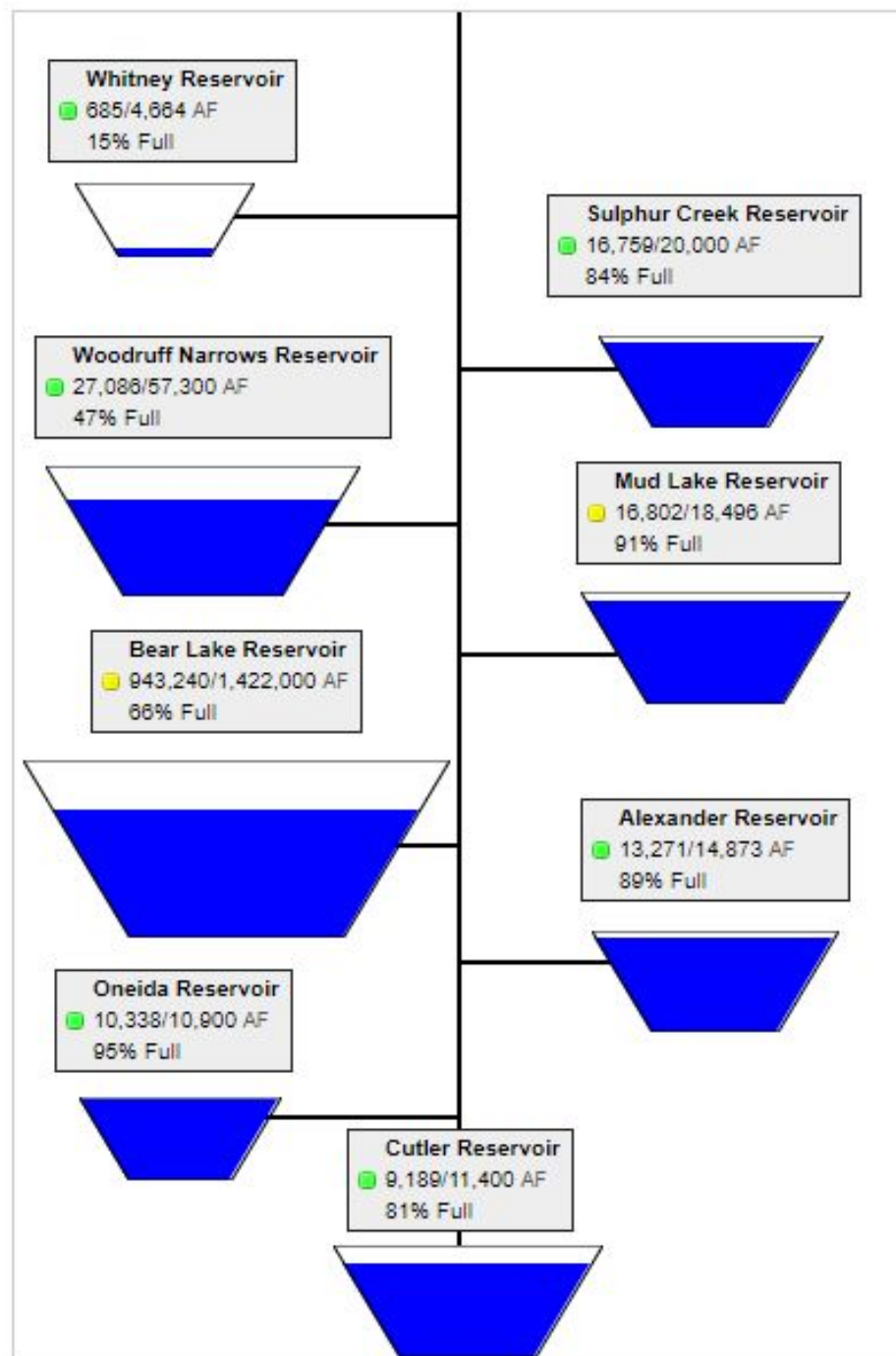
Data Current as of:
04/05/2021

Bear, Weber, and Provo River Basins









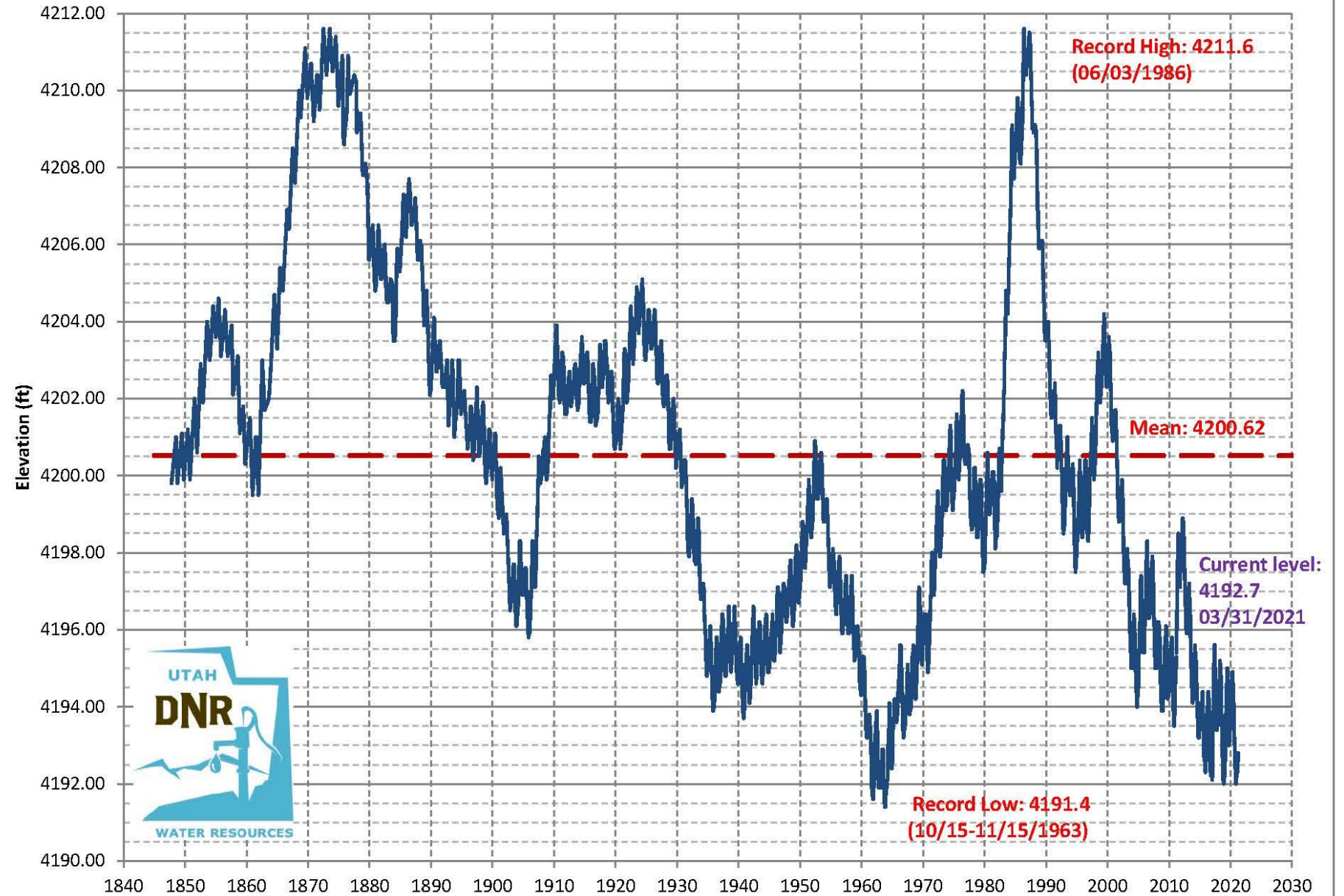
Agency - Bear River Commission Data
Presenter - Laura Haskell

WASHINGTON COUNTY WATER CONSERVANCY DISTRICT RESERVOIRS

(Percent of Full Capacity)

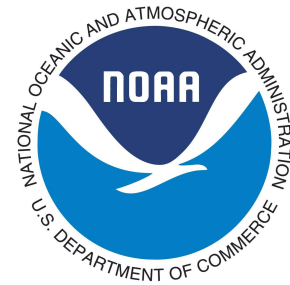
INDICATOR	CURRENT VALUE	VS. PRIOR PERIOD	VS. SAME PERIOD PRIOR YEAR	TREND ⓘ
Reservoir Storage (Percent of Monthly Average) <i>Southwestern Utah Basin</i>	38.0%	▼	▼	-8
Reservoir Percent Full - Daily <i>All Reservoirs-Washington County (UT)</i>	57.5%	▲	▲	+1
Reservoir Percent Full - Daily <i>Gunlock Reservoir-Washington County (UT)</i>	58.0%	●	▼	12
Reservoir Percent Full - Daily <i>Kolob Reservoir-Washington County (UT)</i>	52.0%	●	▼	2
Reservoir Percent Full - Daily <i>Sand Hollow Reservoir-Washington County (UT)</i>	93.0%	▲	▼	+1
Reservoir Percent Full - Daily <i>Quail Creek Reservoir-Washington County (UT)</i>	72.0%	●	▼	11
Reservoir Percent Full - Daily <i>Ivins Reservoir-Washington County (UT)</i>	12.7%	●	▲	55

Great Salt Lake South Arm Elevations

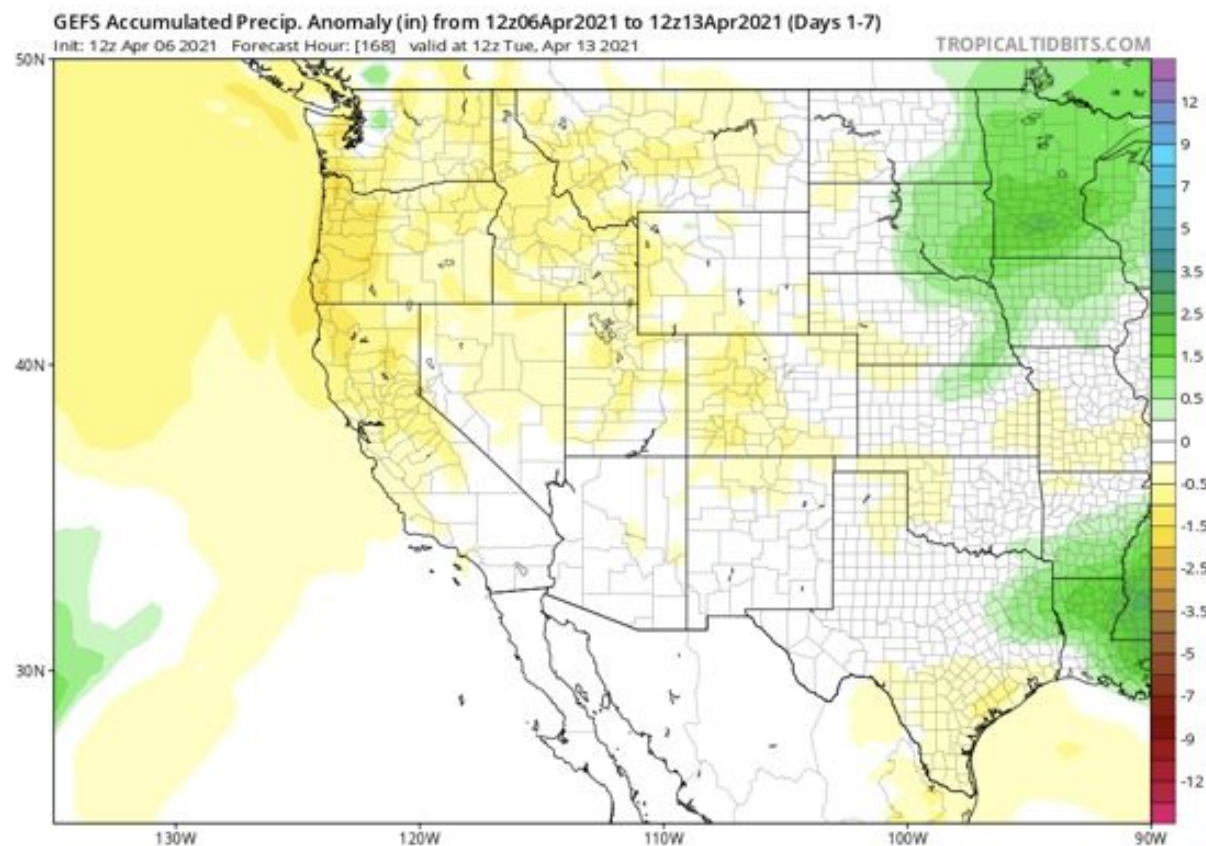
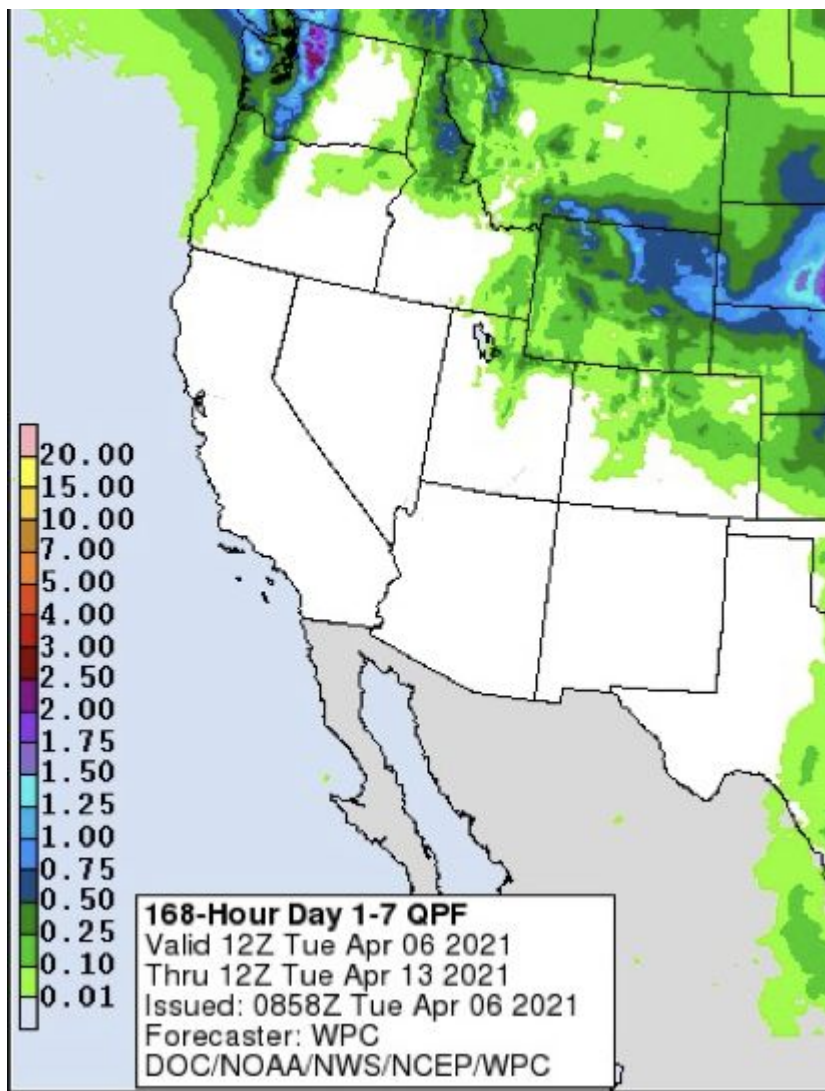


Agency - Division of Water
Resources w/ USGS data
Presenter - Laura Haskell

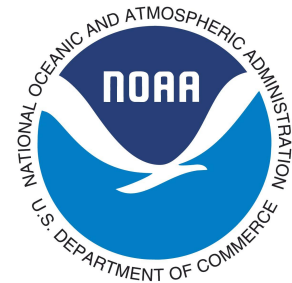
Weather Forecast Office Utah Day 1-7 Outlook



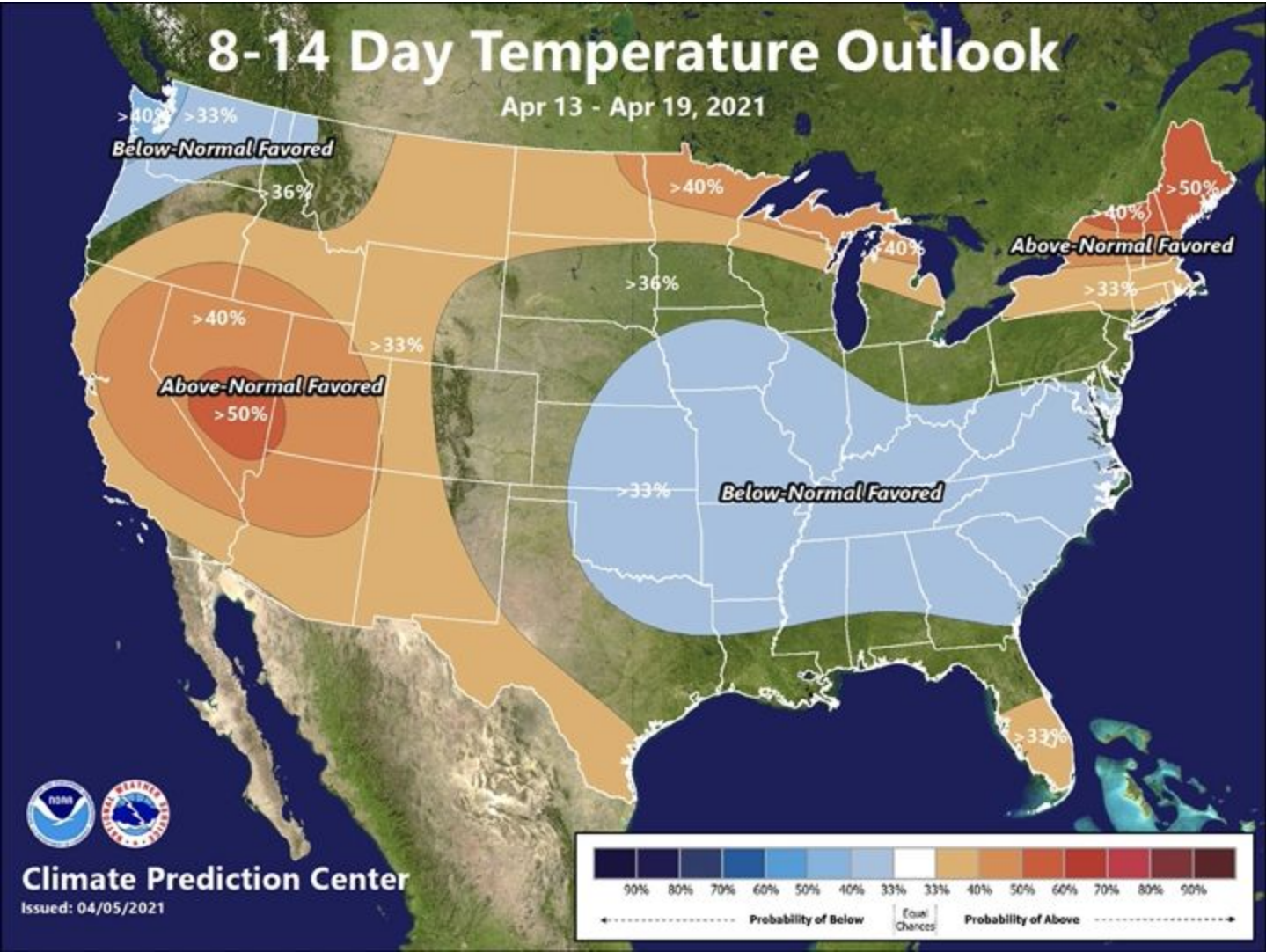
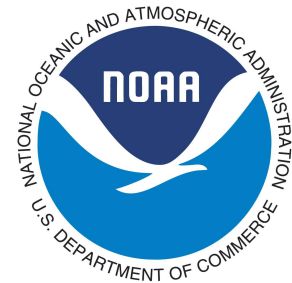
- Temperatures slightly above climatological normals, near normal for a few days
- Well below normal precipitation forecast



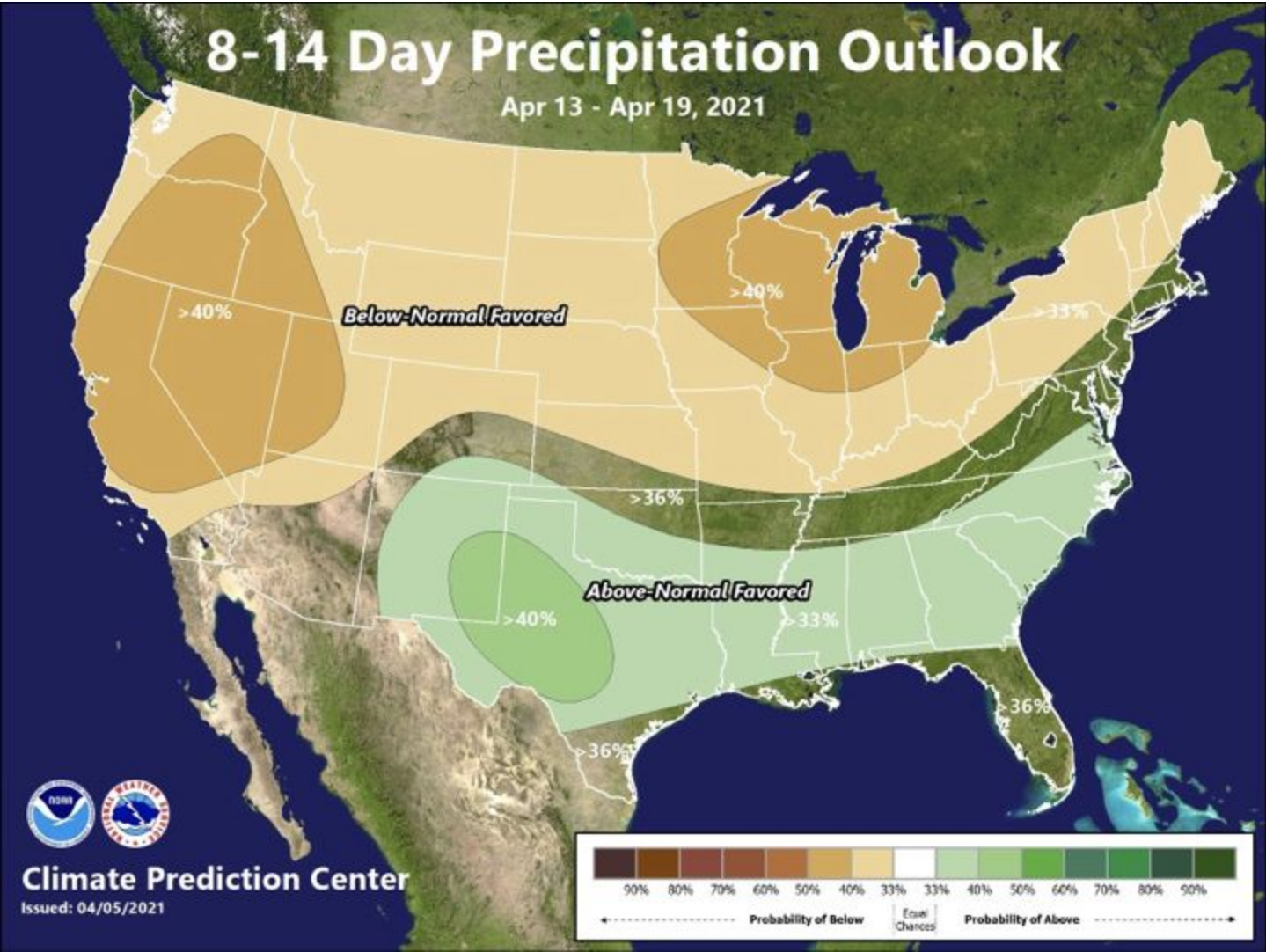
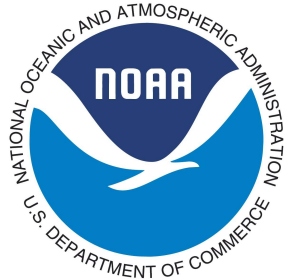
Weather Prediction Center U.S. Day 3-7 Hazards Outlook



Climate Prediction Center 8 to 14 Day Outlooks - Temperature

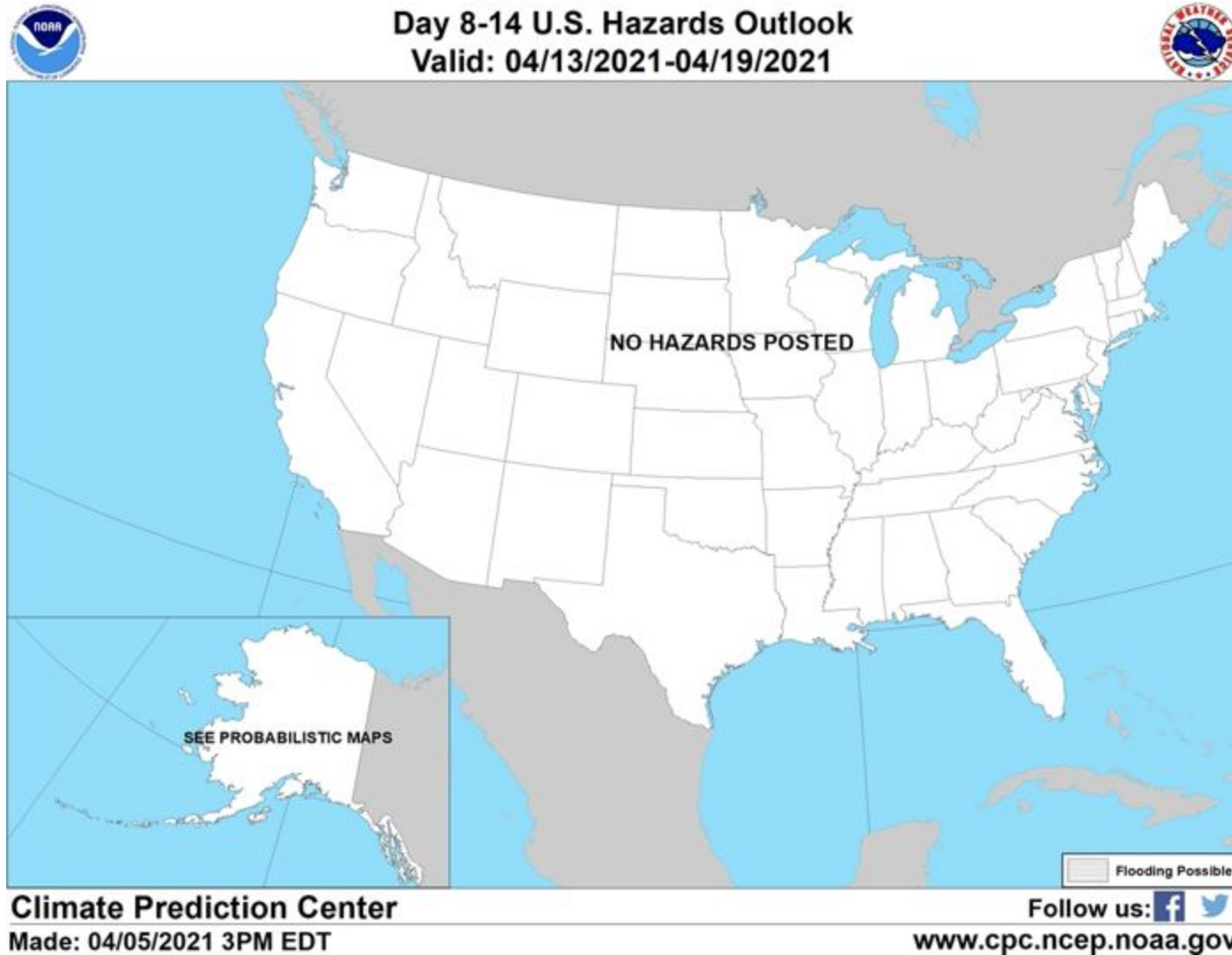
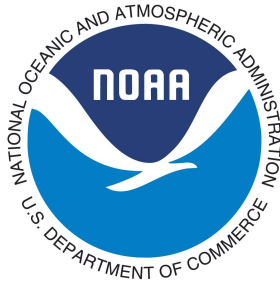


Climate Prediction Center 8 to 14 Day Outlooks - Precipitation



Agency - National Weather Service Weather Forecast Office
Presenter -

Climate Prediction Center U.S. Week-2 Hazards Outlook

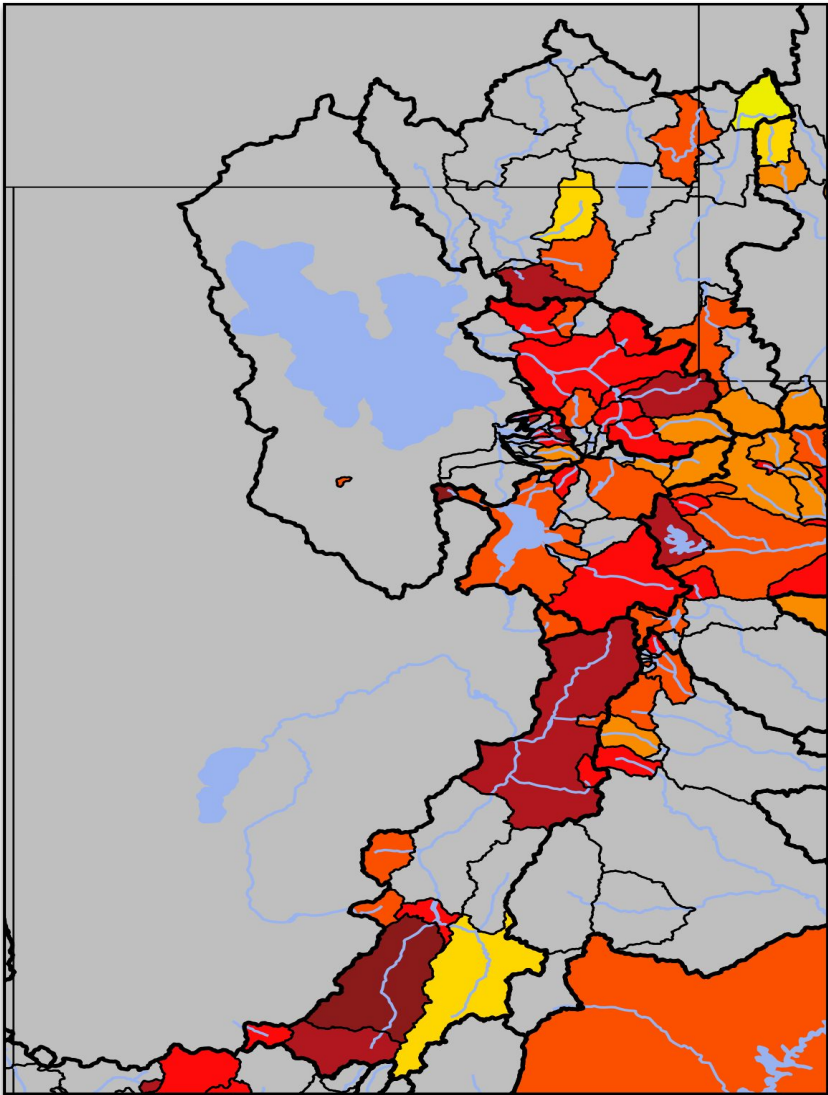
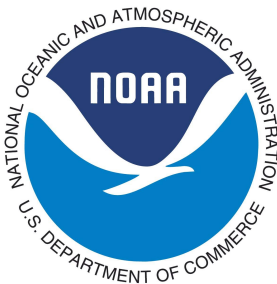


Agency - National Weather Service Weather Forecast Office
Presenter - Glen Merrill

Colorado Basin River Forecast Center - April 1, 2021 Water Supply Forecasts

Median Forecast in KAF for Basins within Utah:

- Weber 35%
- Bear 50%
- Six Creeks 35%
- Utah Lake 40%
- Duchesne 45%
- Sevier 45%
- Virgin 25%
- Lower Green River 45%
- San Juan 50%
- Lake Powell 45%





Water Well with CWEL

Webinar Series

2nd Tuesday of each month

2:00 pm MST

Join our Mailing list

Join Utah State University's Center for Water Efficient Landscaping in a monthly webinar series, "Water Well with CWEL" on the 2nd Tuesday of each month @ 2 p.m. (MST). Leave us your name & email & we'll keep you updated on the monthly speakers & topics.

Subscribe

Subscribe

With 90% of the state experiencing extreme drought, Gov. Spencer J. Cox's recent Executive Order declaring a state of emergency due to drought conditions, and the irrigation season right around the corner there's no better time to cover proper lawn watering practices and get homeowners off to a great start this watering season. This free event will take place via Zoom on Tuesday, April 13th @ 2pm. Registration required.

Registration: https://usu-edu.zoom.us/webinar/register/8616166902314/WN_Qlc92KJORYedS-6VRGMkQw

