



# Utah Water Assessment & Conditions Monitoring (Drought Webinar)

The meeting will begin shortly



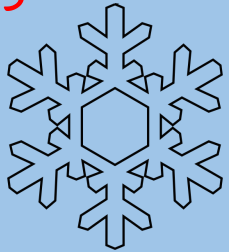
Thank you to our contributors





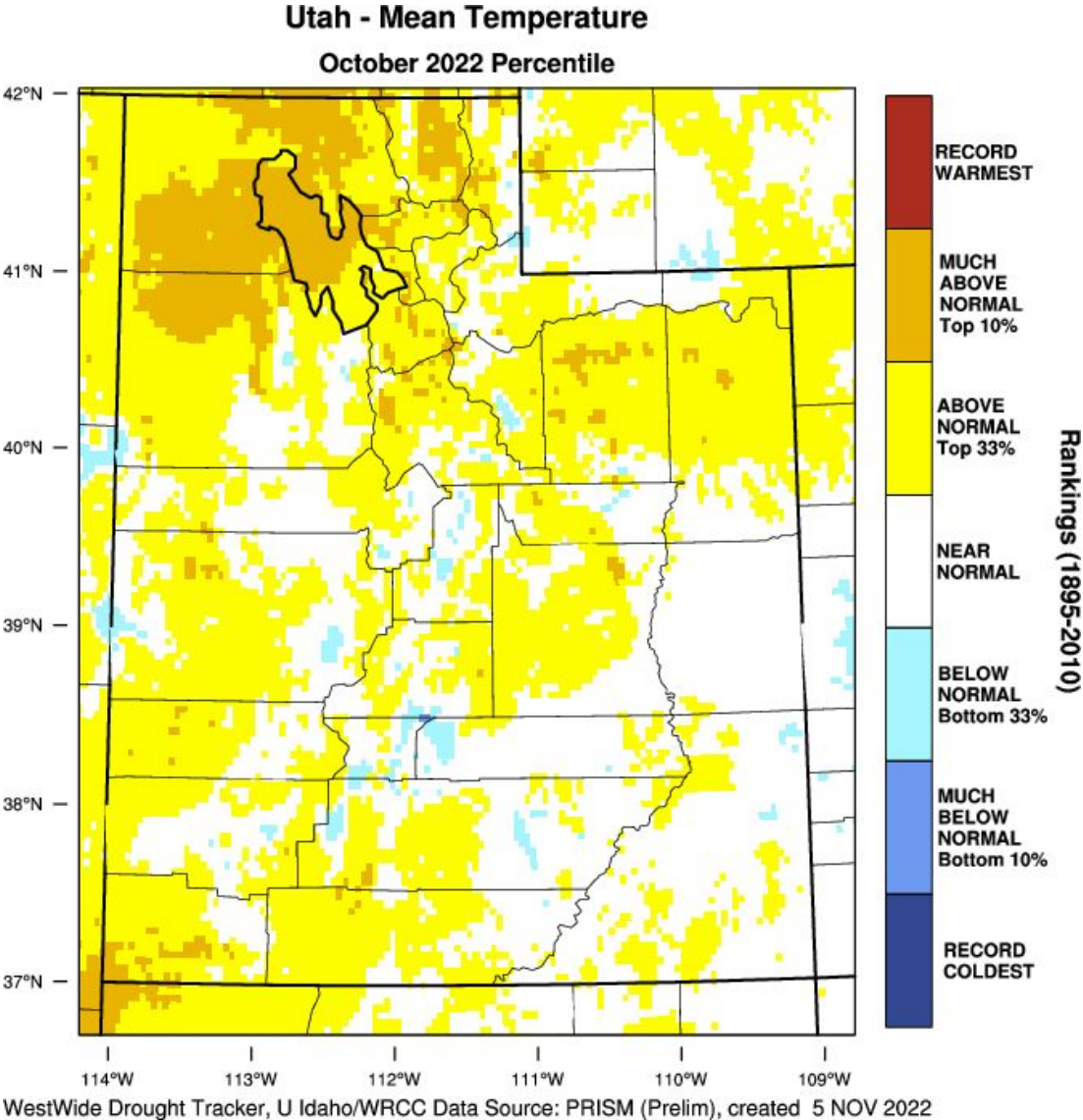
# **Utah Water Assessment & Conditions Monitoring Webinar**

**VOTE SNOW!**

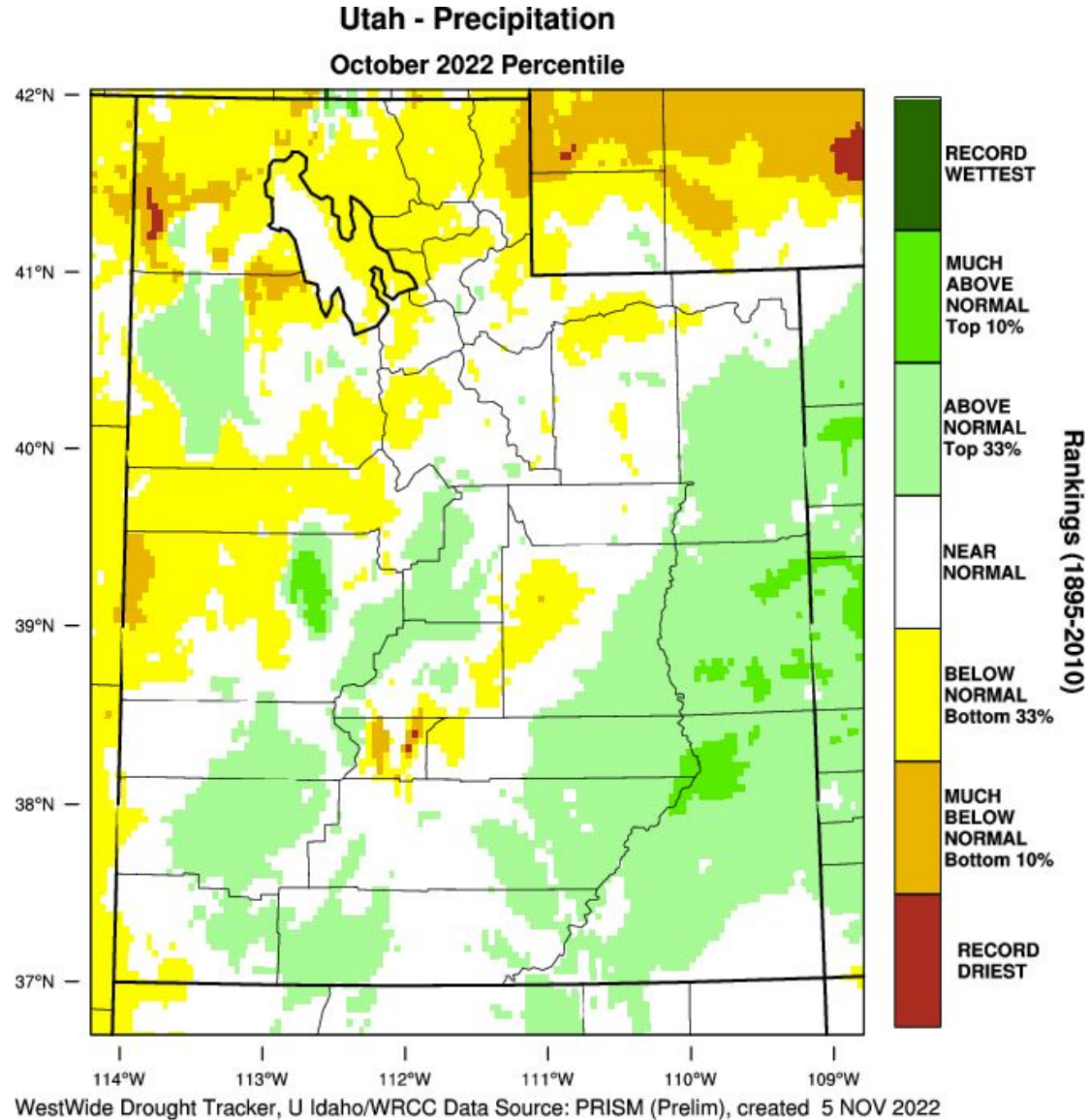


**November 8, 2022**

# October Temperatures



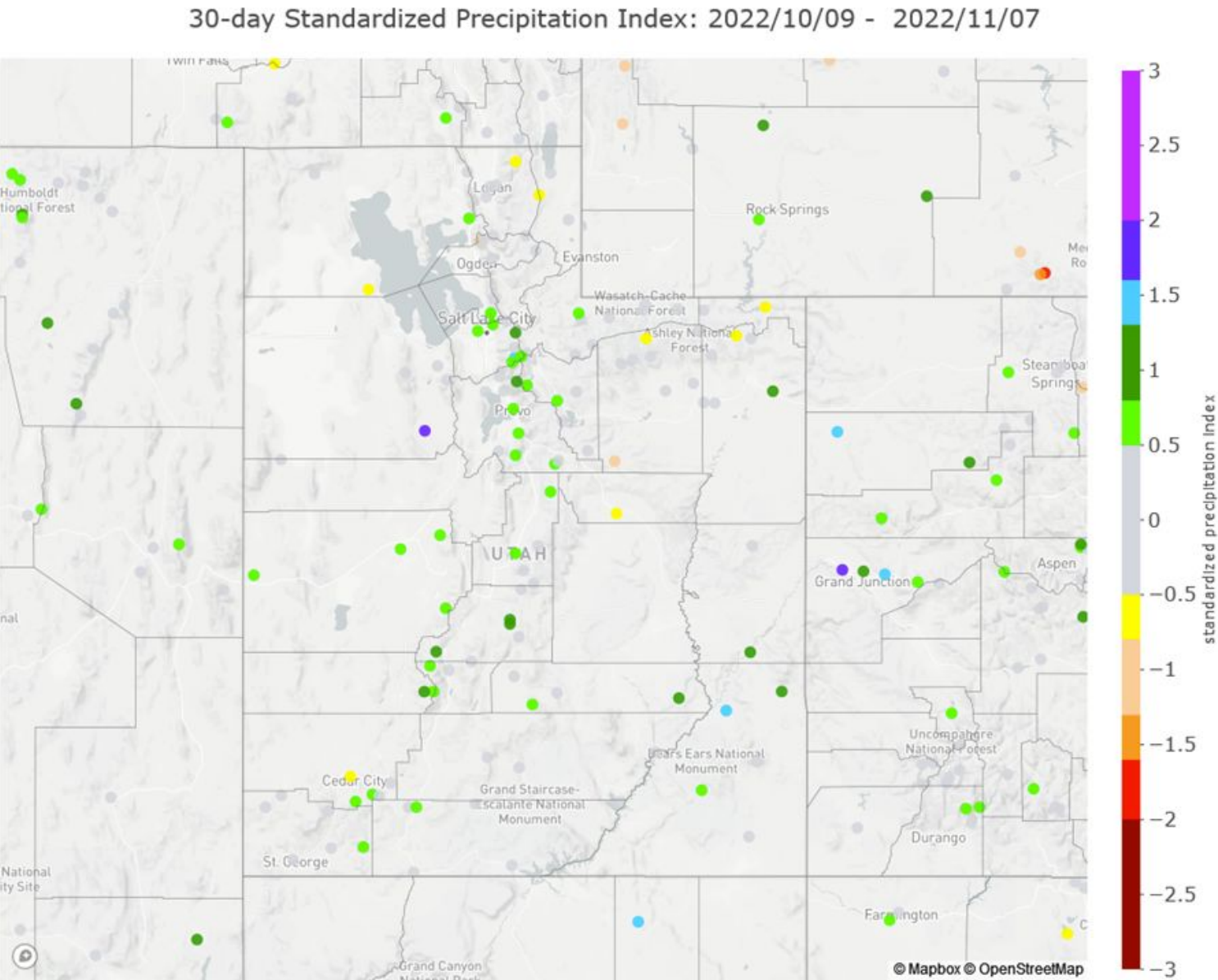
# October Precipitation



Agency - Utah Climate Center

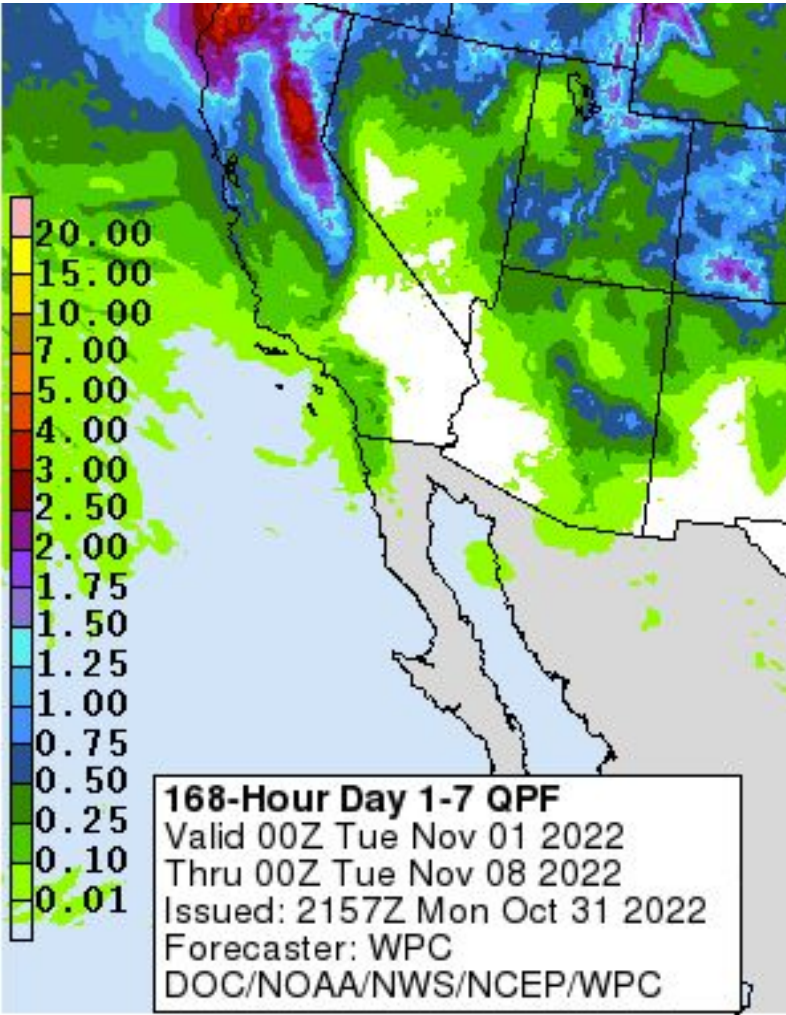
Presenter - Jon Meyer

# Precipitation 30 day history (SPI)

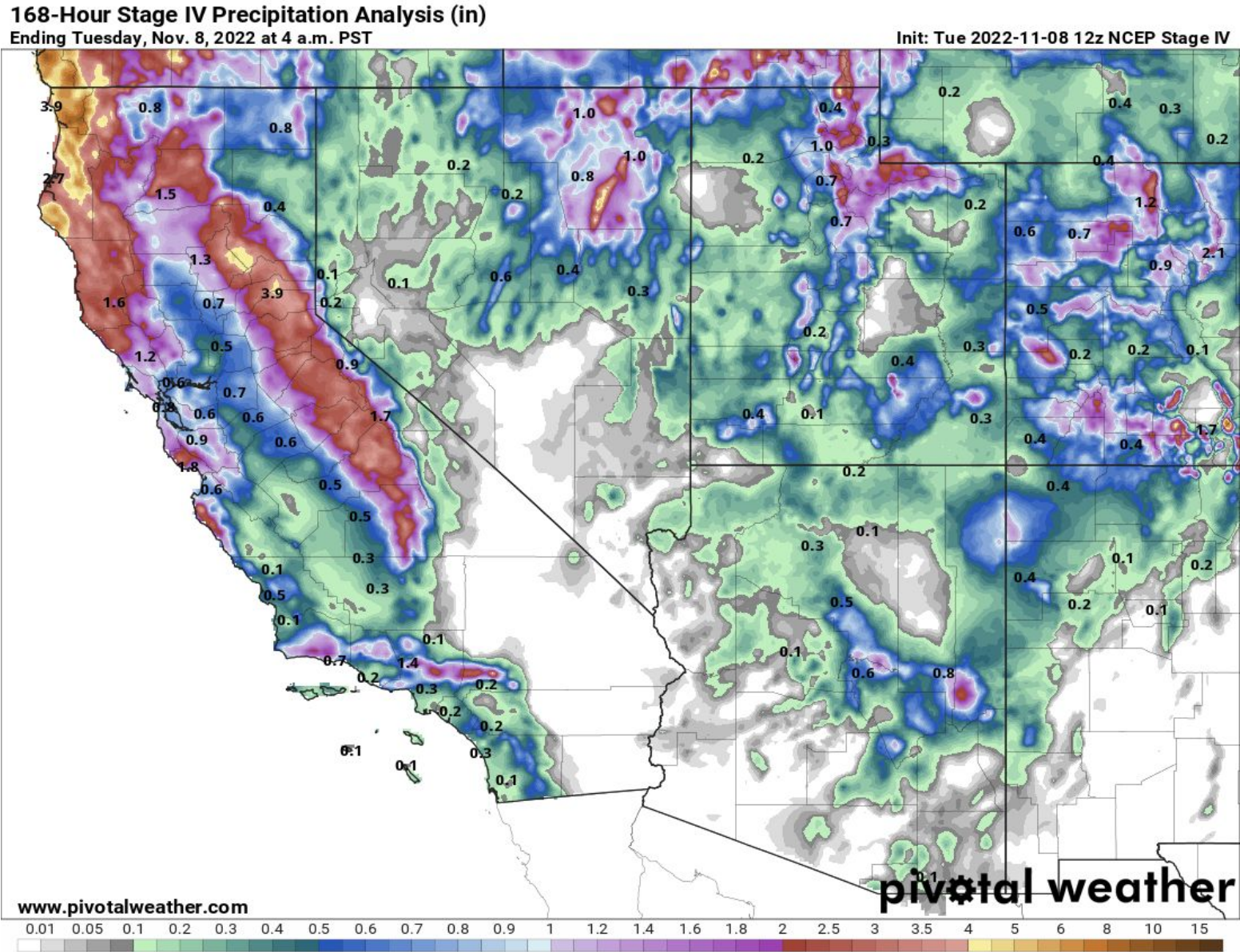




# Precipitation 7-day (Stage IV Dataset)

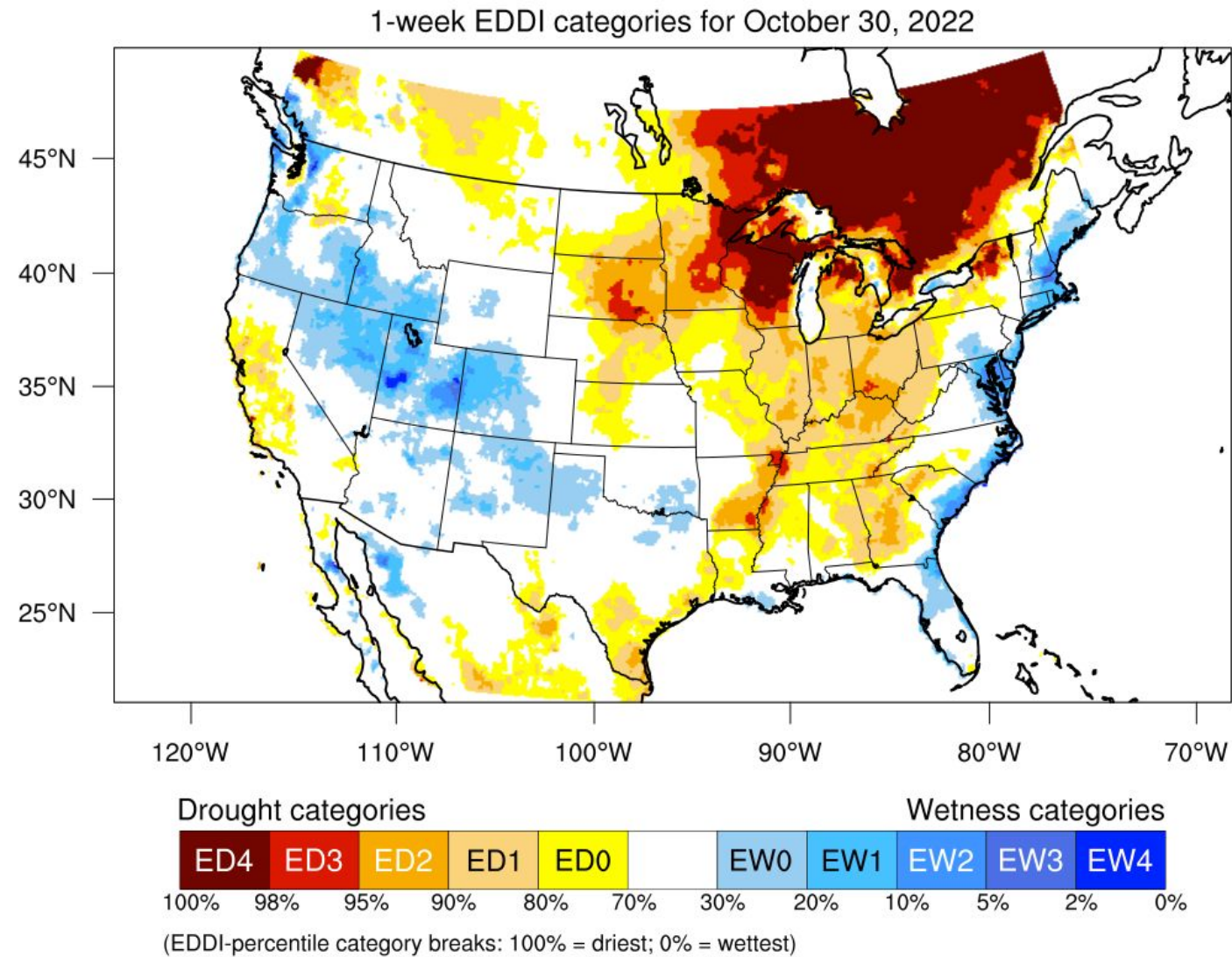


Agency - Utah Climate Center  
Presenter - Jon Meyer

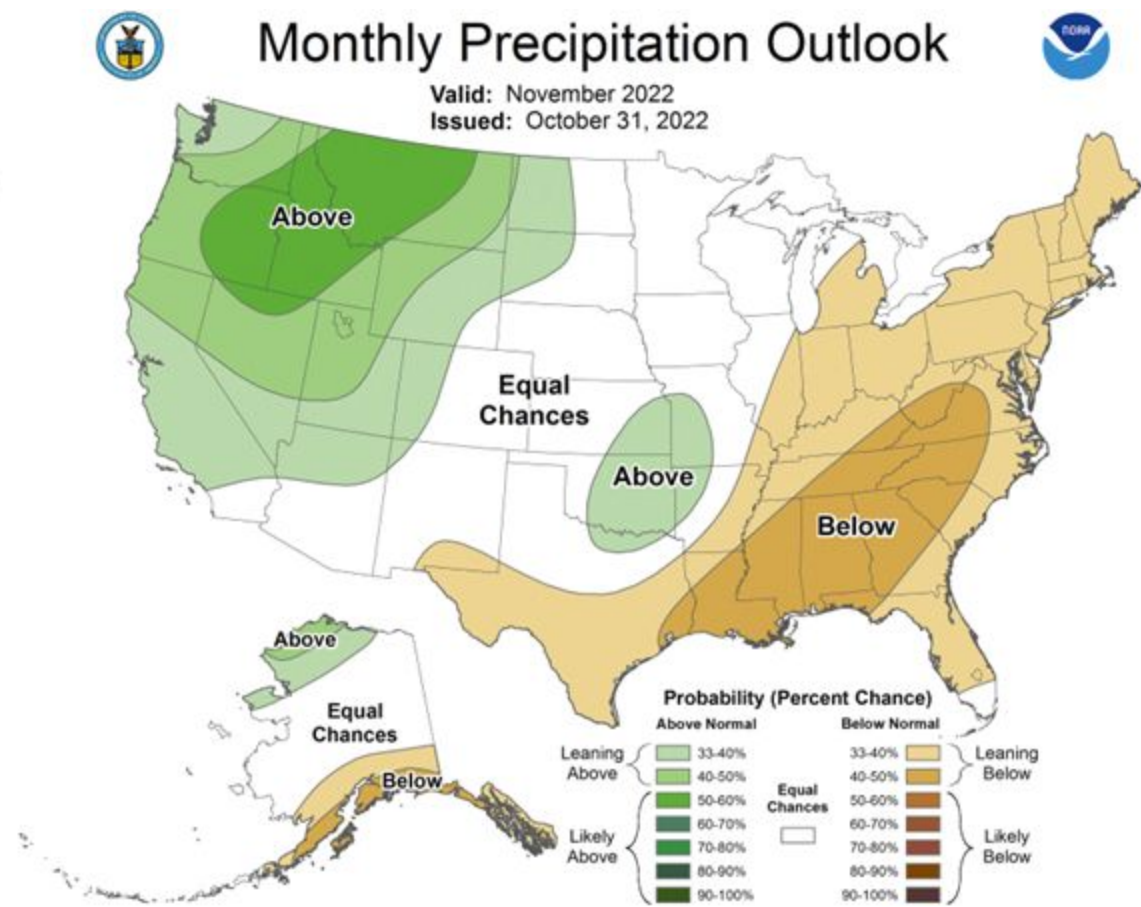
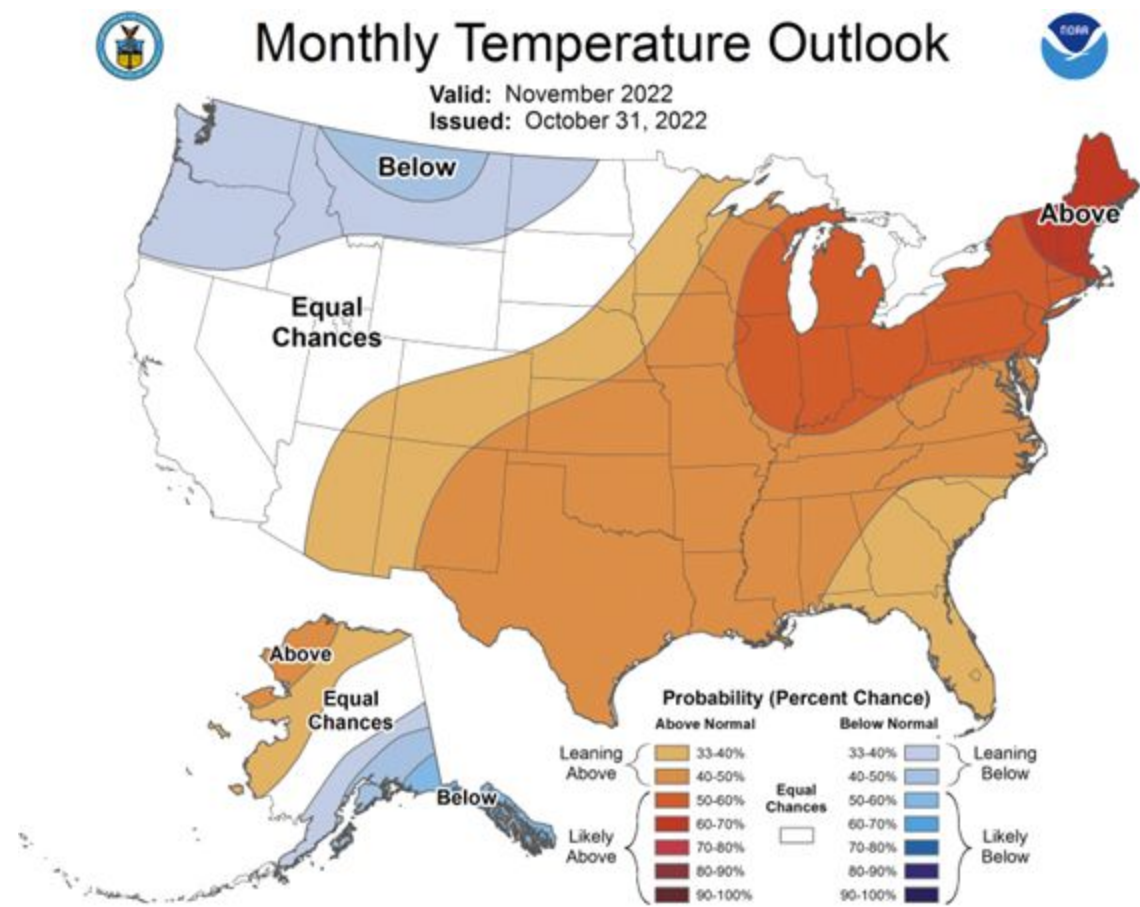




# Evaporative Demand

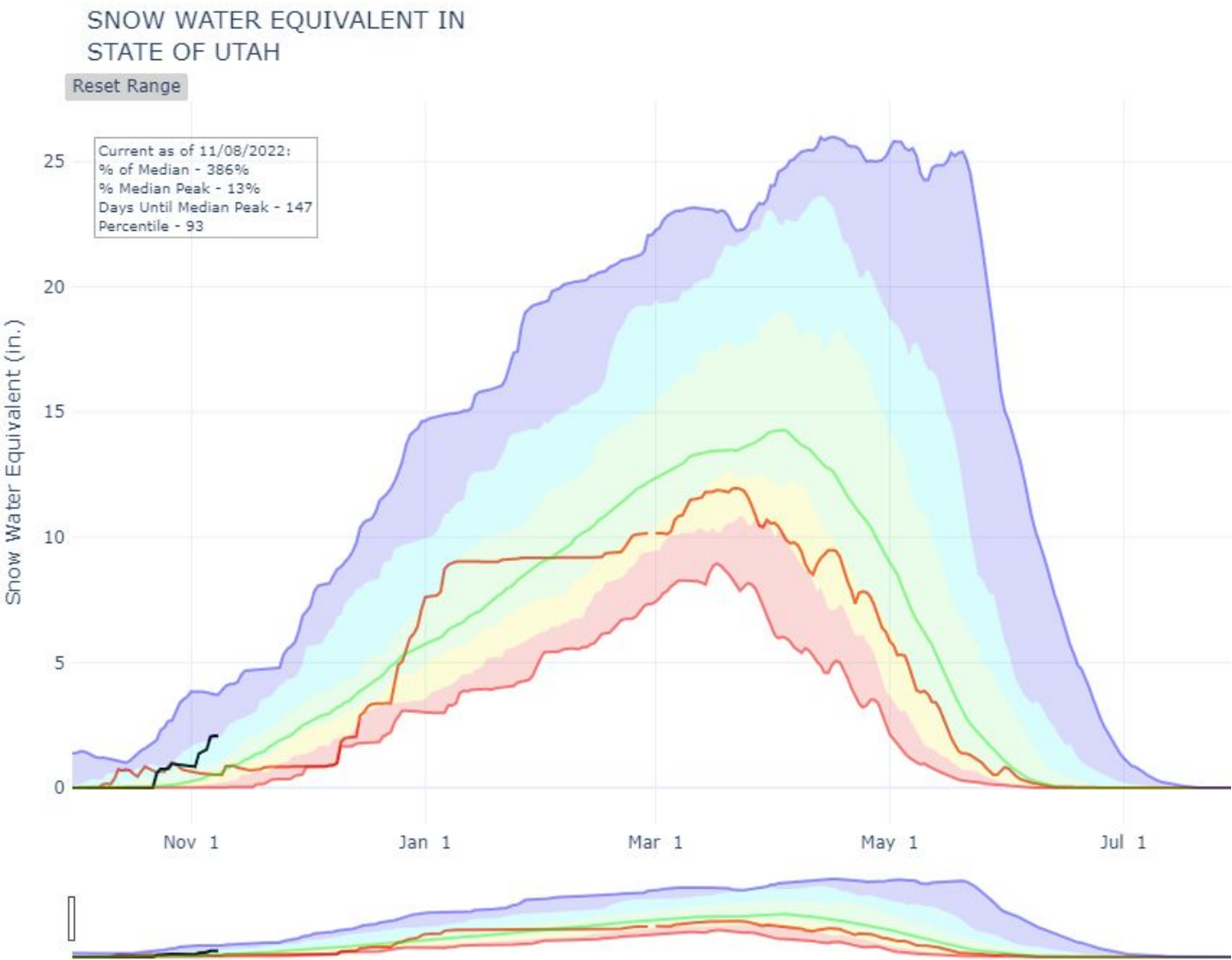


# CPC November outlook

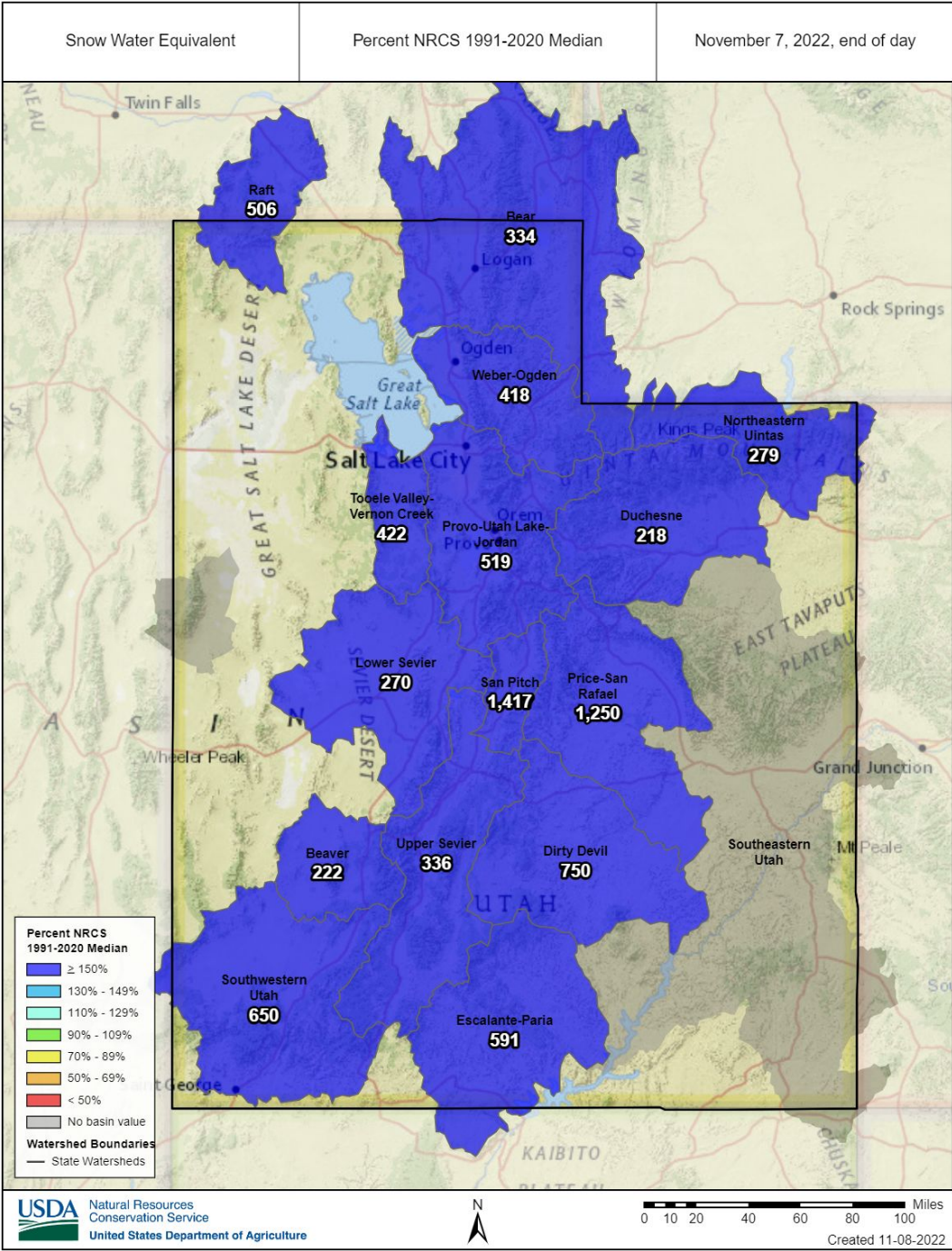




# Snowpack

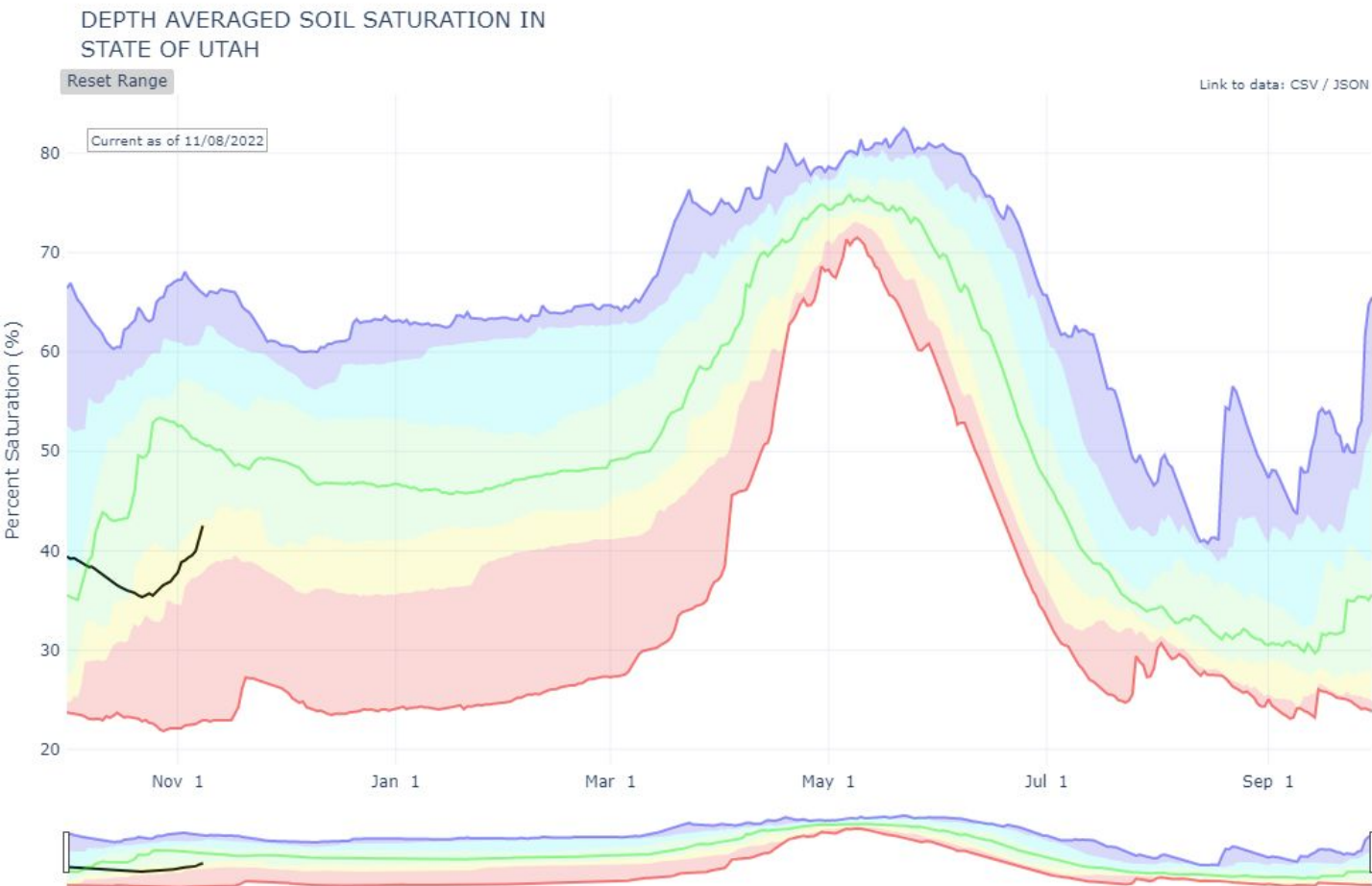


Agency - NRCS Snow Survey  
Presenter - Jordan Clayton

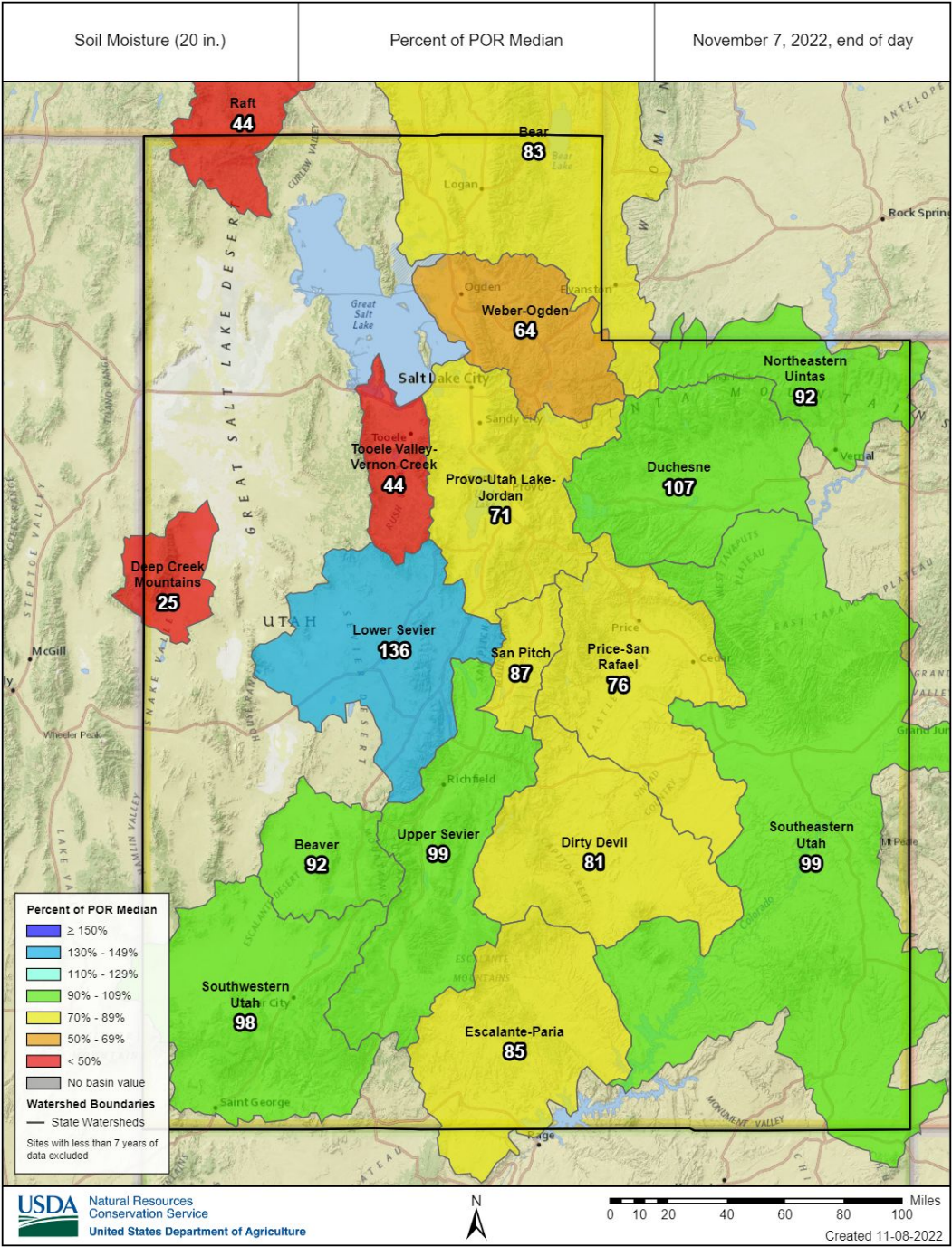




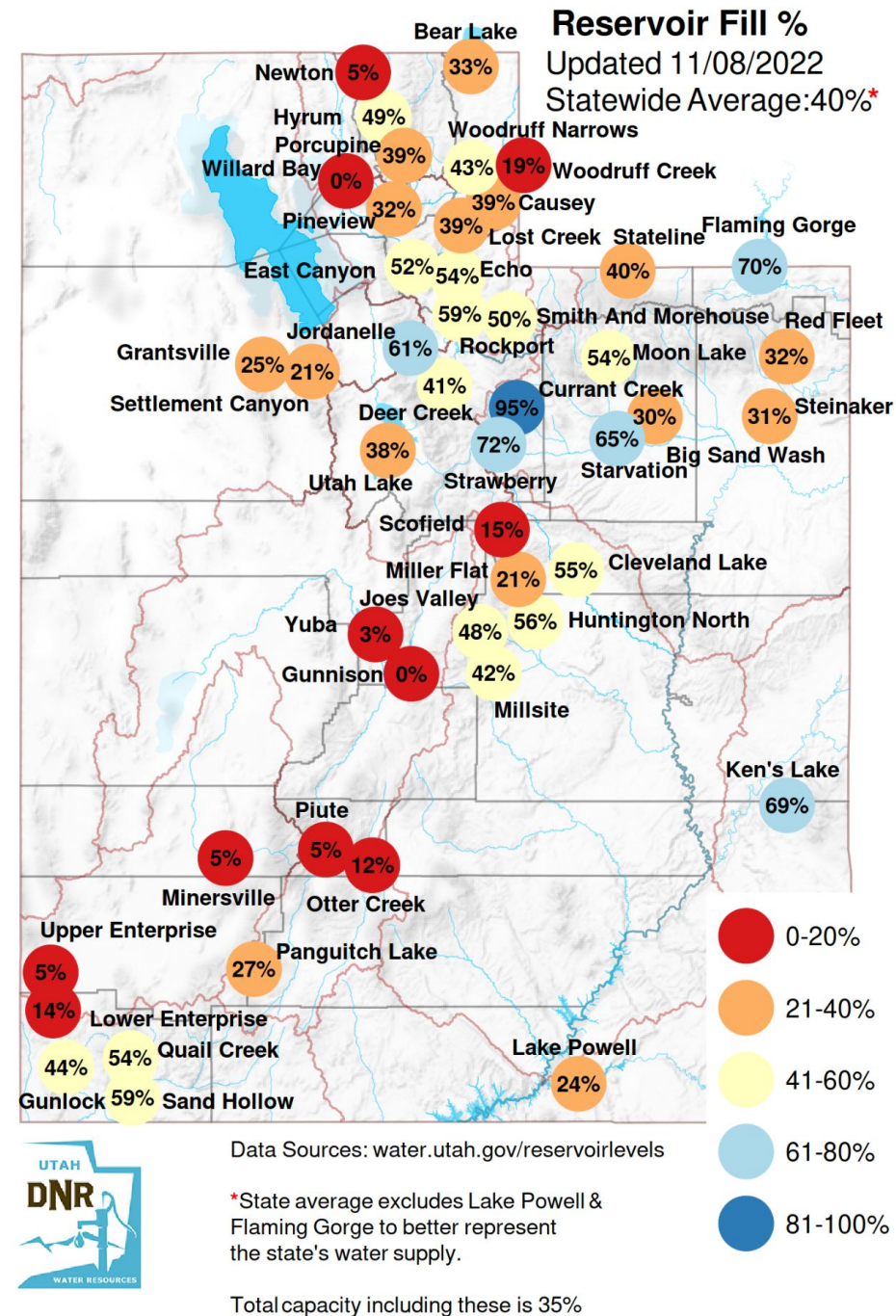
# Soil Moisture



Agency - NRCS Snow Survey  
Presenter - Jordan Clayton



Reservoirs levels still declining slowly  
 Last year reservoir levels increased in October  
 Median basically flatlines in October

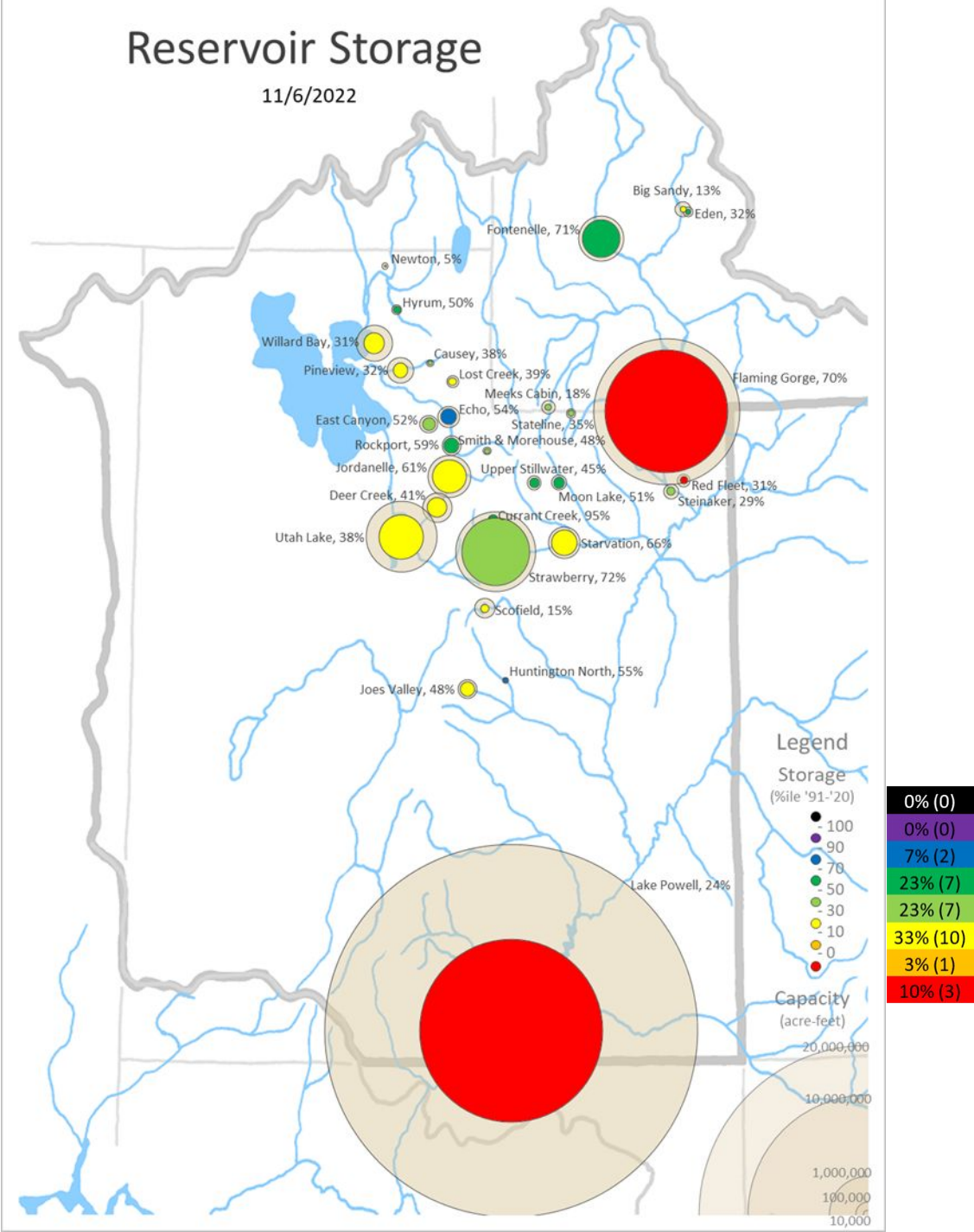




# Reservoir Levels

## Reservoir Storage

11/6/2022



Agency - BOR  
Presenter - Gary Henrie



Recreation &amp;

Encompassing all or parts of Arizona, Colorado, Idaho, Nevada, New Mexico, T

Reclamation / Upper Colorado Basin / Water Operations

[Contact Us](#)

**New** – Review of the 2007 Colorado River Inter

## Water Operations

### Reservoir Data

This is Reclamation's new hydrologic database access portal. These new tools are designed to replace the Data Retrieval and Current Condition apps below, as they begin to reach the end of their functional lifespans. We encourage everyone to take a look at our new and improved access portal and begin plans to transition to this improved data delivery source.

Reservoir Data (storage, inflow, releases, elevation & more)  
Gage Data (flow, flow volume & side inflows.)

### Historic Data

### Current Conditions

HydroData Basin Maps (current reservoir capacity & current and historical snow and precipitation charts)

Legend ▼

FLAMING GORGE RESERVOIR 

[Overview Map](#) [Navigator](#)

 Upstream Map

### CHARACTERISTICS

 **Bank Storage**

Storage

### Evaporation

 Inflow

Inflow Volume

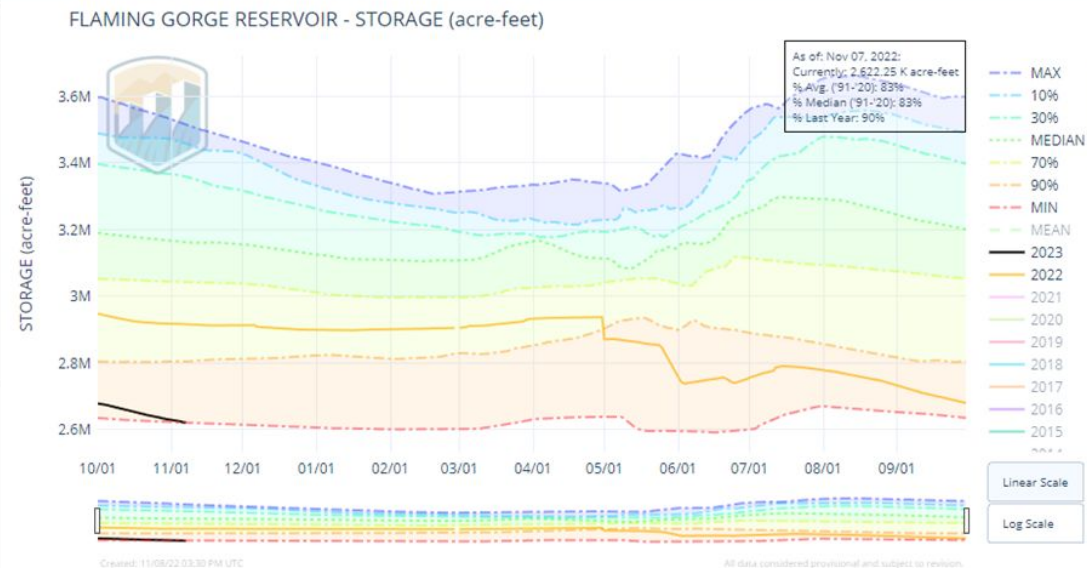
 Unregulated

1110

### Inflow Volume

 **Power Release**

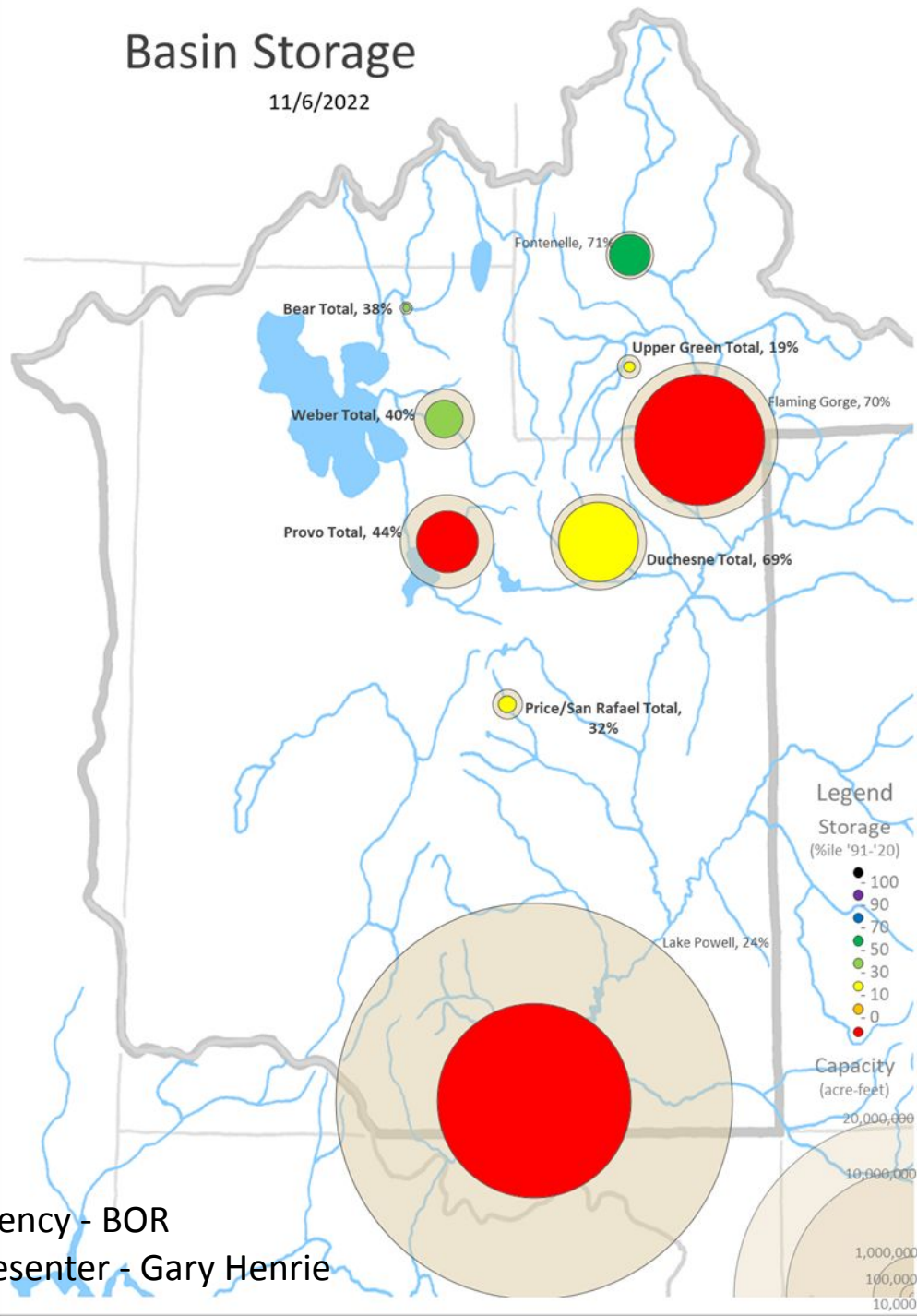
Latitude: 40.915, Longitude: -109.422, Elevation: 5667

BUREAU OF  
RECLAMATION



# Basin Storage

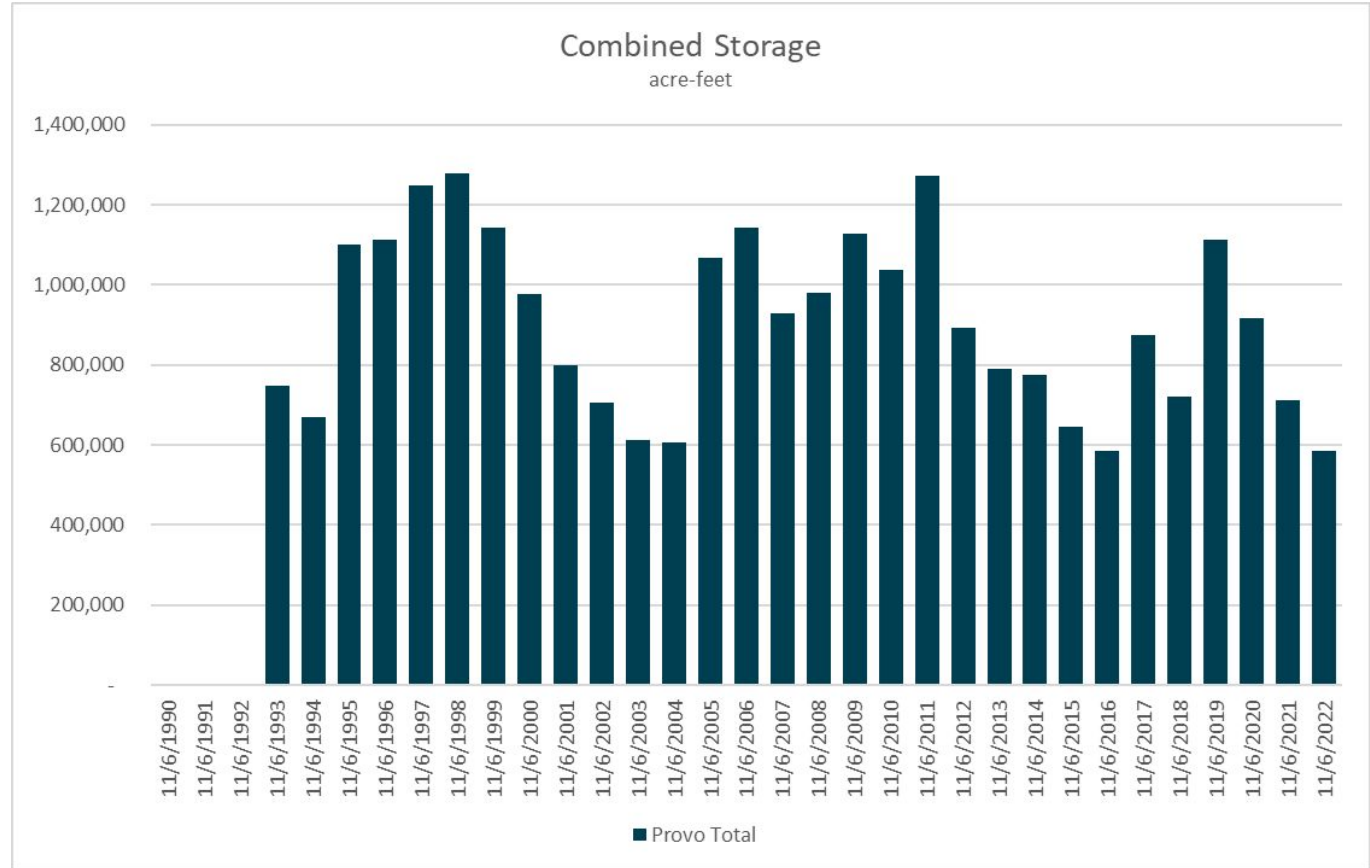
11/6/2022



Agency - BOR  
Presenter - Gary Henrie

## Combined Storage

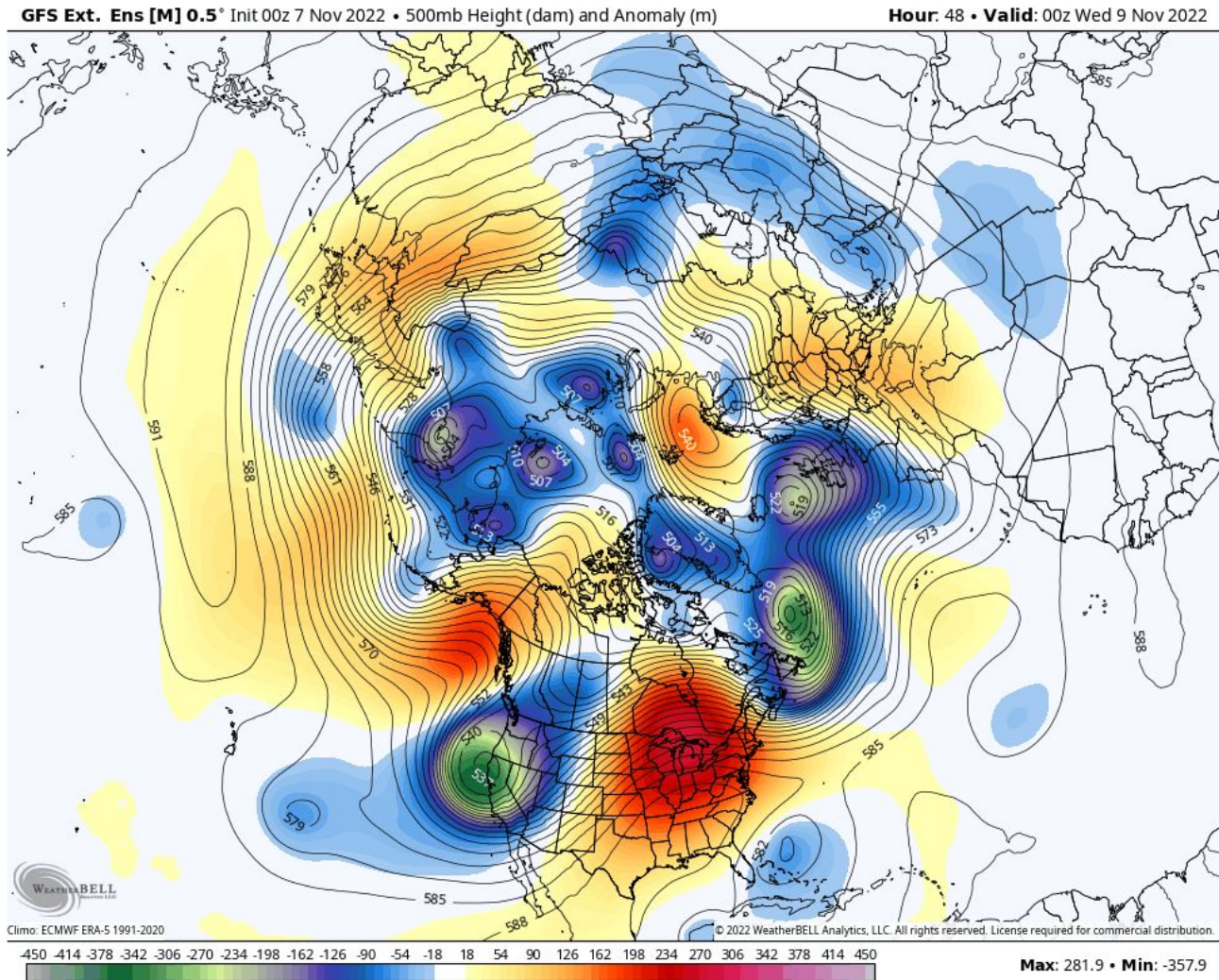
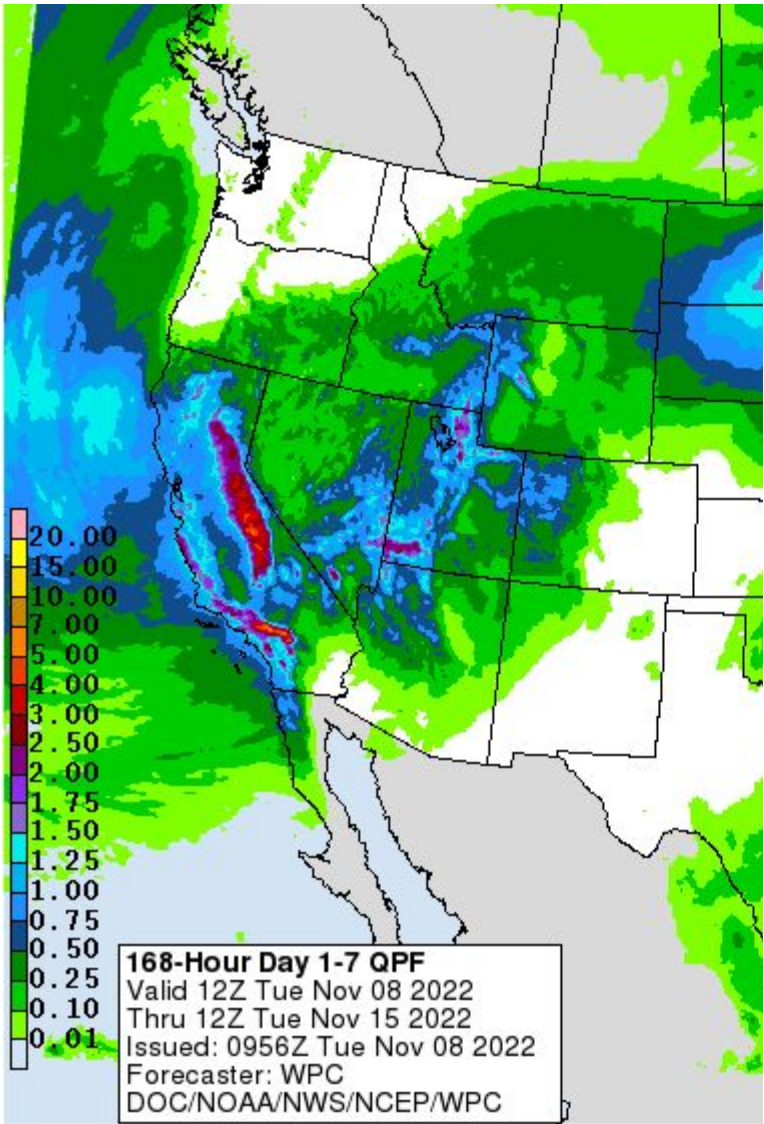
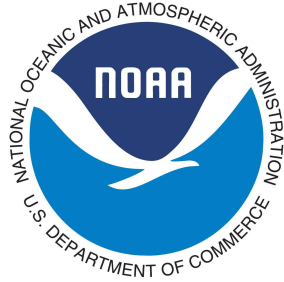
acre-feet



BUREAU OF  
RECLAMATION

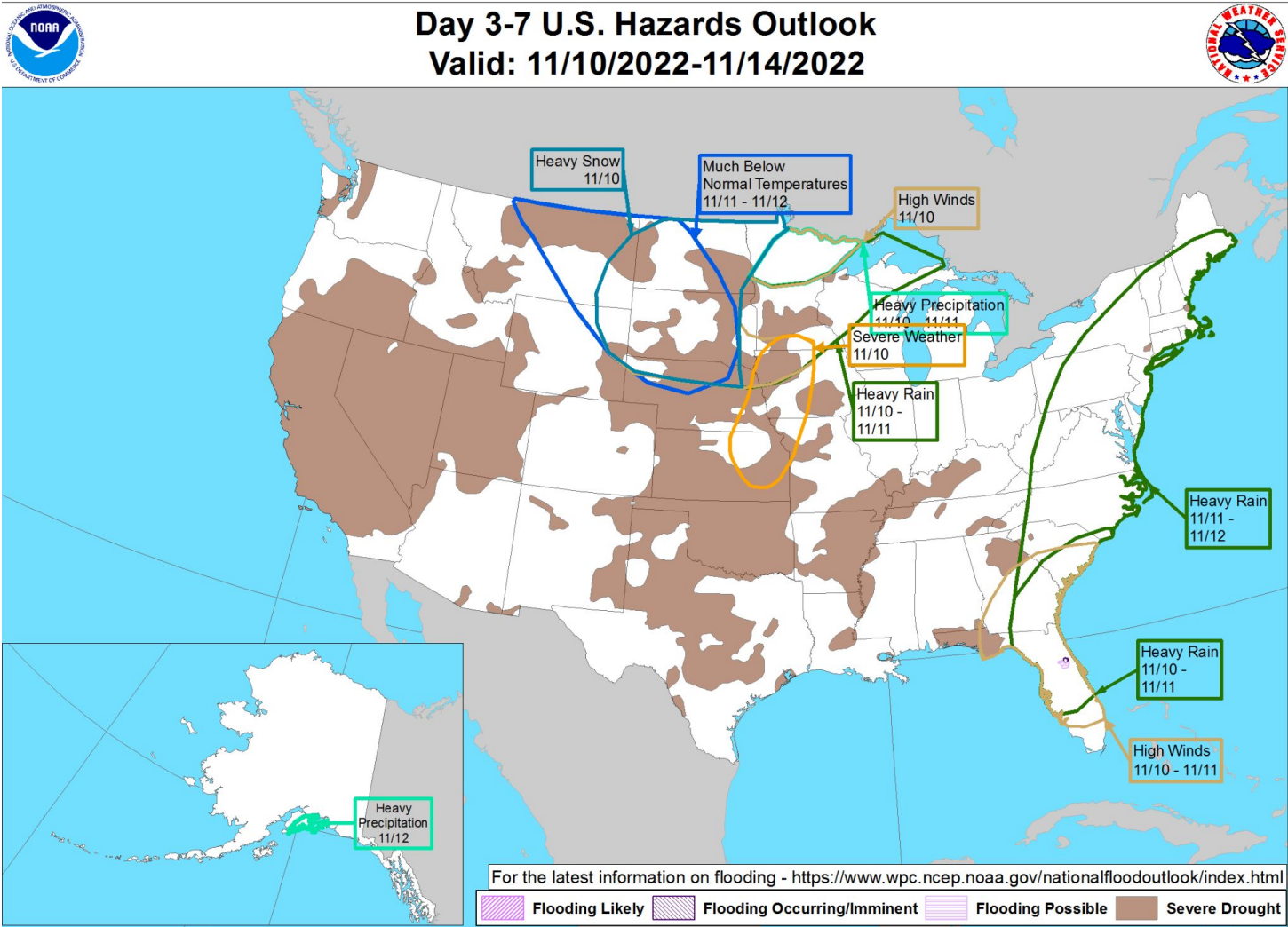


# Weather Forecast Office Utah Day 1-7 Outlook





# Weather Prediction Center U.S. Day 3-7 Hazards Outlook



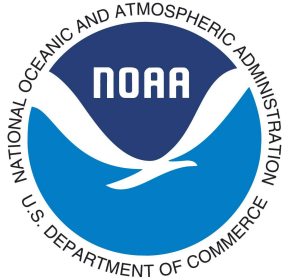
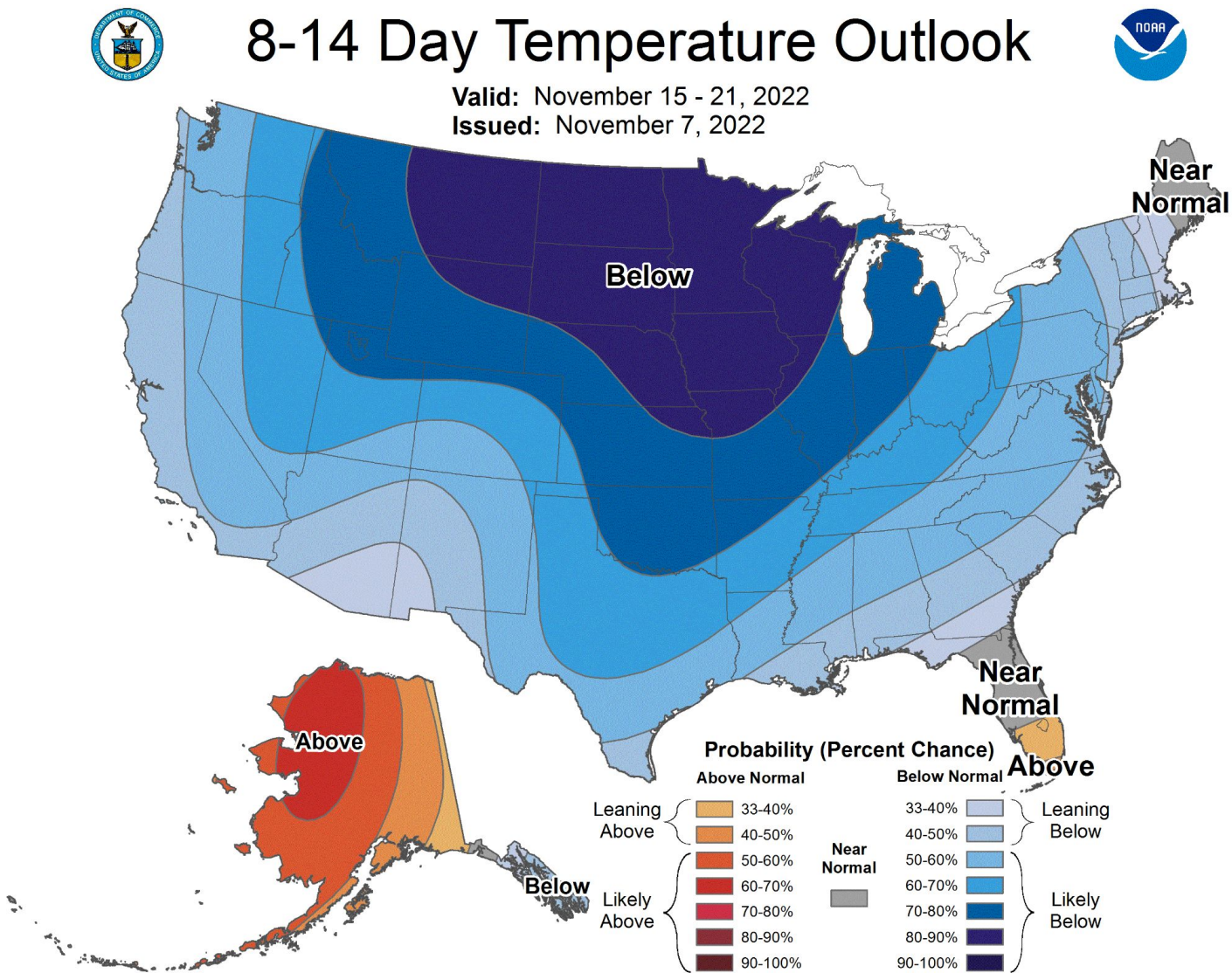
**Weather Prediction Center**

Made: 11/07/2022 3PM EST

Follow us: 

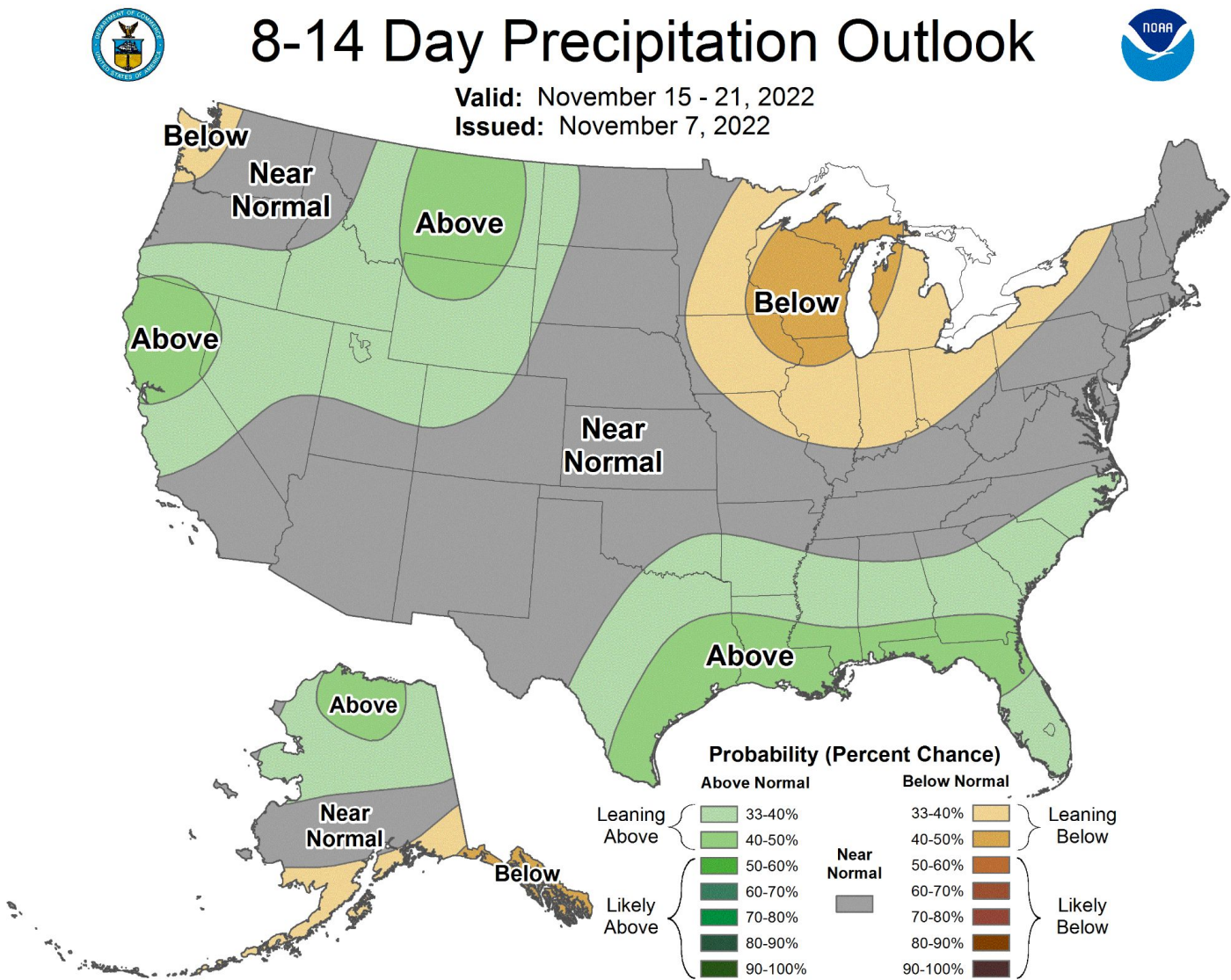
[www.wpc.ncep.noaa.gov](http://www.wpc.ncep.noaa.gov)

# Climate Prediction Center 8 to 14 Day Outlooks - Temperature

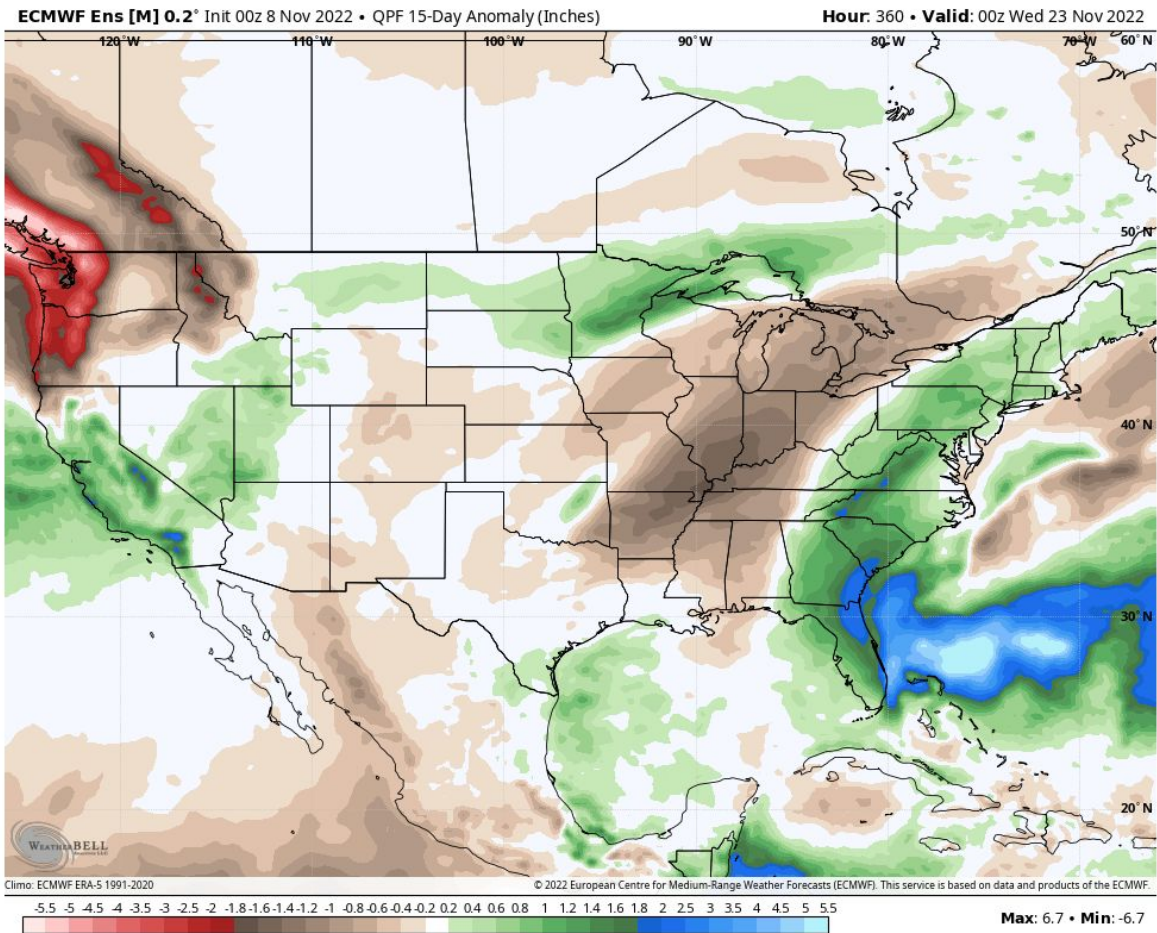
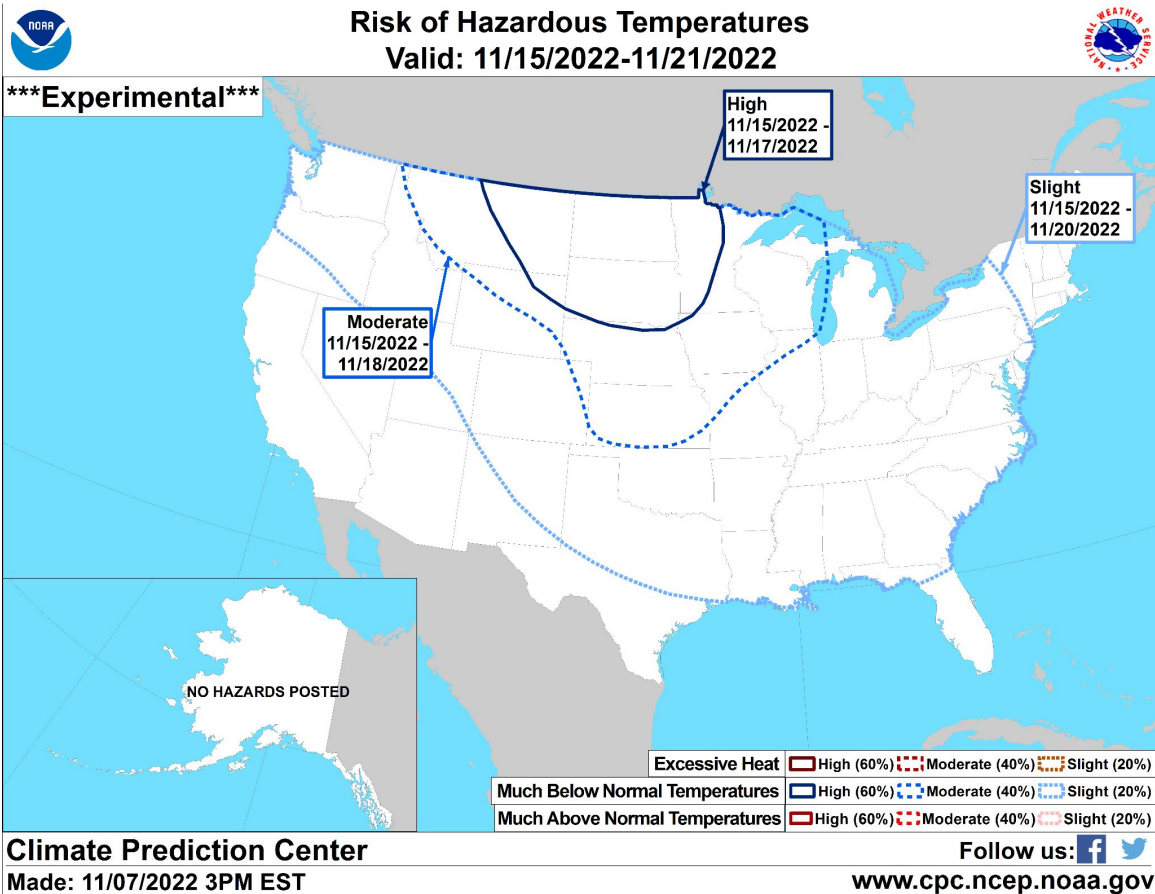




# Climate Prediction Center 8 to 14 Day Outlooks - Precipitation



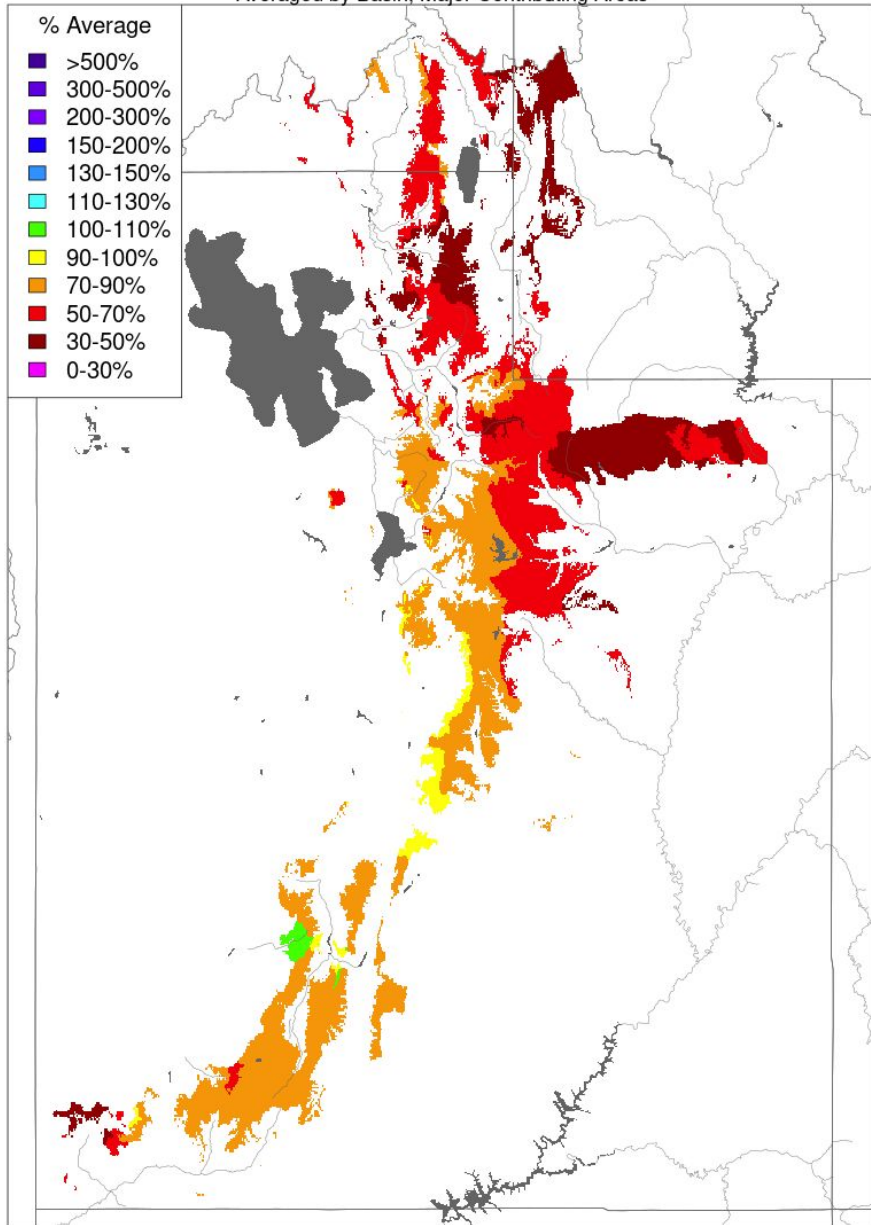
# Climate Prediction Center U.S. Week-2 Hazards Outlook





## Water Year Precipitation, October 2022 - October 2022

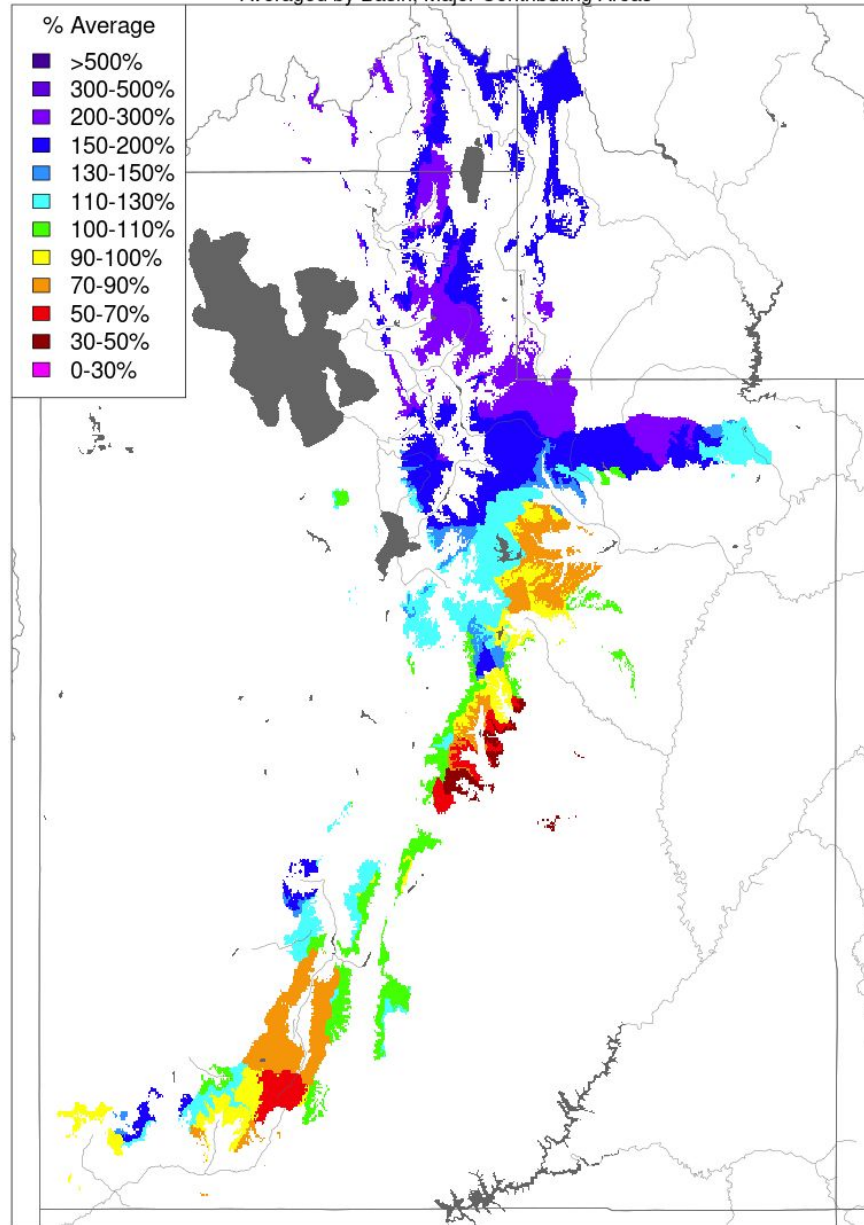
Averaged by Basin, Major Contributing Areas



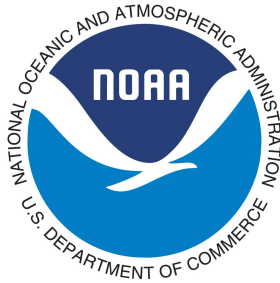
Prepared by NOAA, Colorado Basin River Forecast Center  
Salt Lake City, Utah, [www.cbrfc.noaa.gov](http://www.cbrfc.noaa.gov)

## Month to Date Precipitation - November 08 2022

Averaged by Basin, Major Contributing Areas



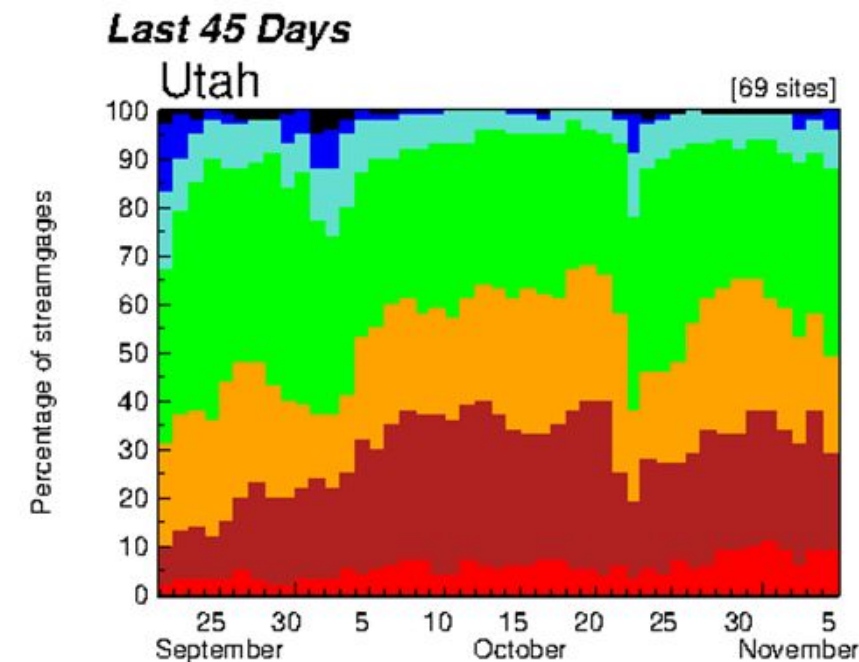
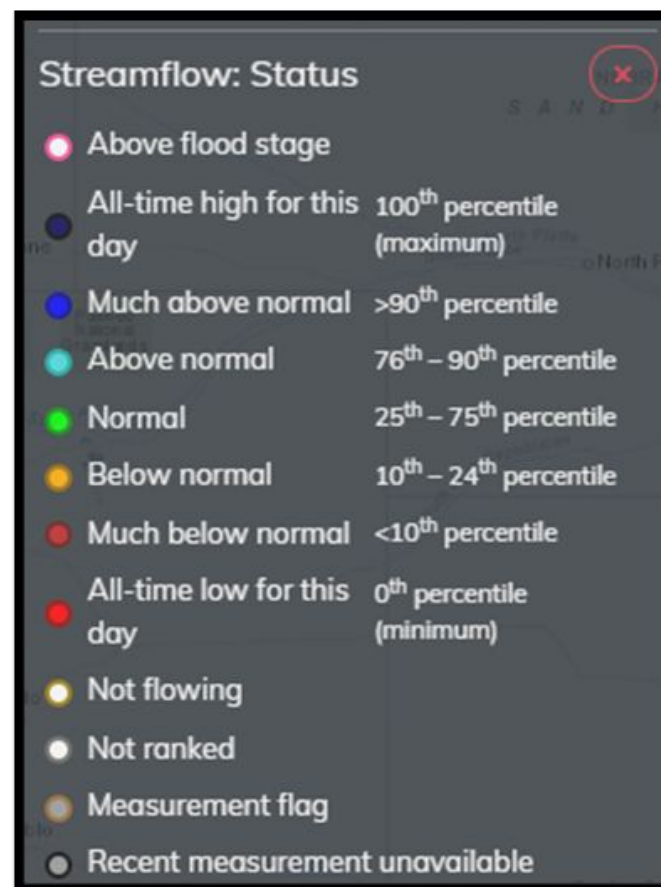
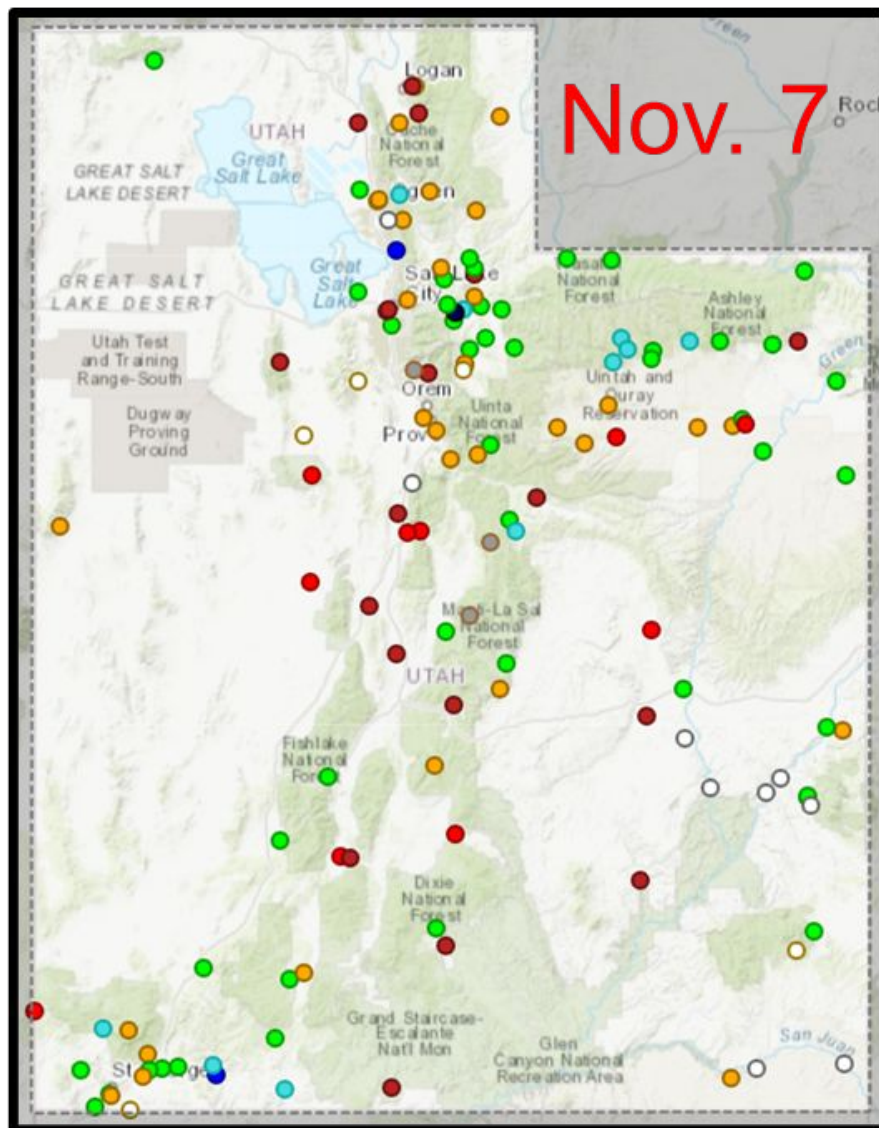
Prepared by NOAA, Colorado Basin River Forecast Center  
Salt Lake City, Utah, [www.cbrfc.noaa.gov](http://www.cbrfc.noaa.gov)



**After a dry October,  
November has been more  
active. Fall precipitation  
tends to be relatively low  
and less variable than other  
times of the year, so bigger  
events like the current one  
are good to see from a  
water supply perspective.  
Next time we should have a  
preliminary Fall soil**



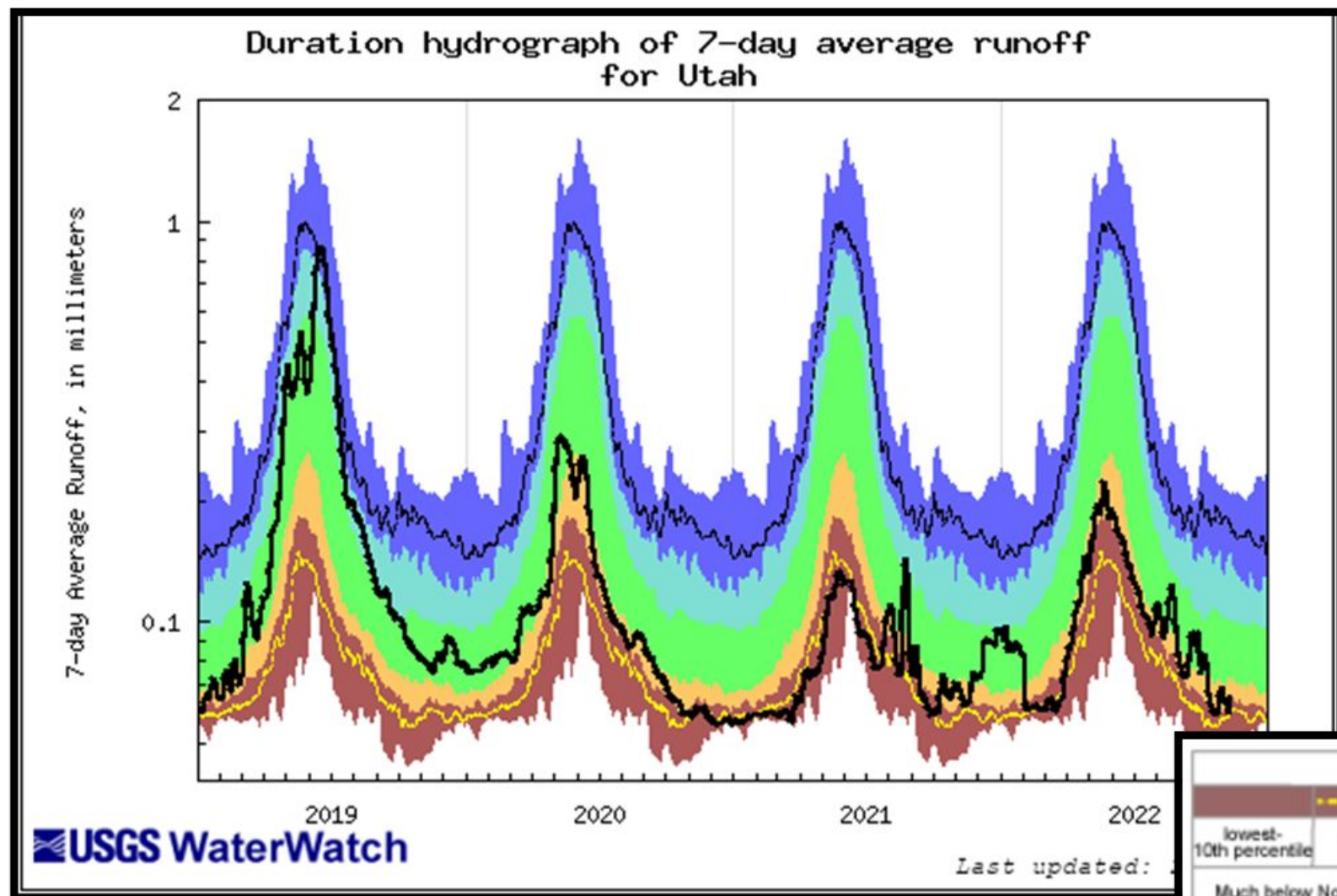
# Current Streamflow Conditions



## National Water Dashboard

**\*Sites must have at least 10 years of streamflow record to be ranked on this graphic**

# Area Based Runoff Duration Hydrograph for Utah



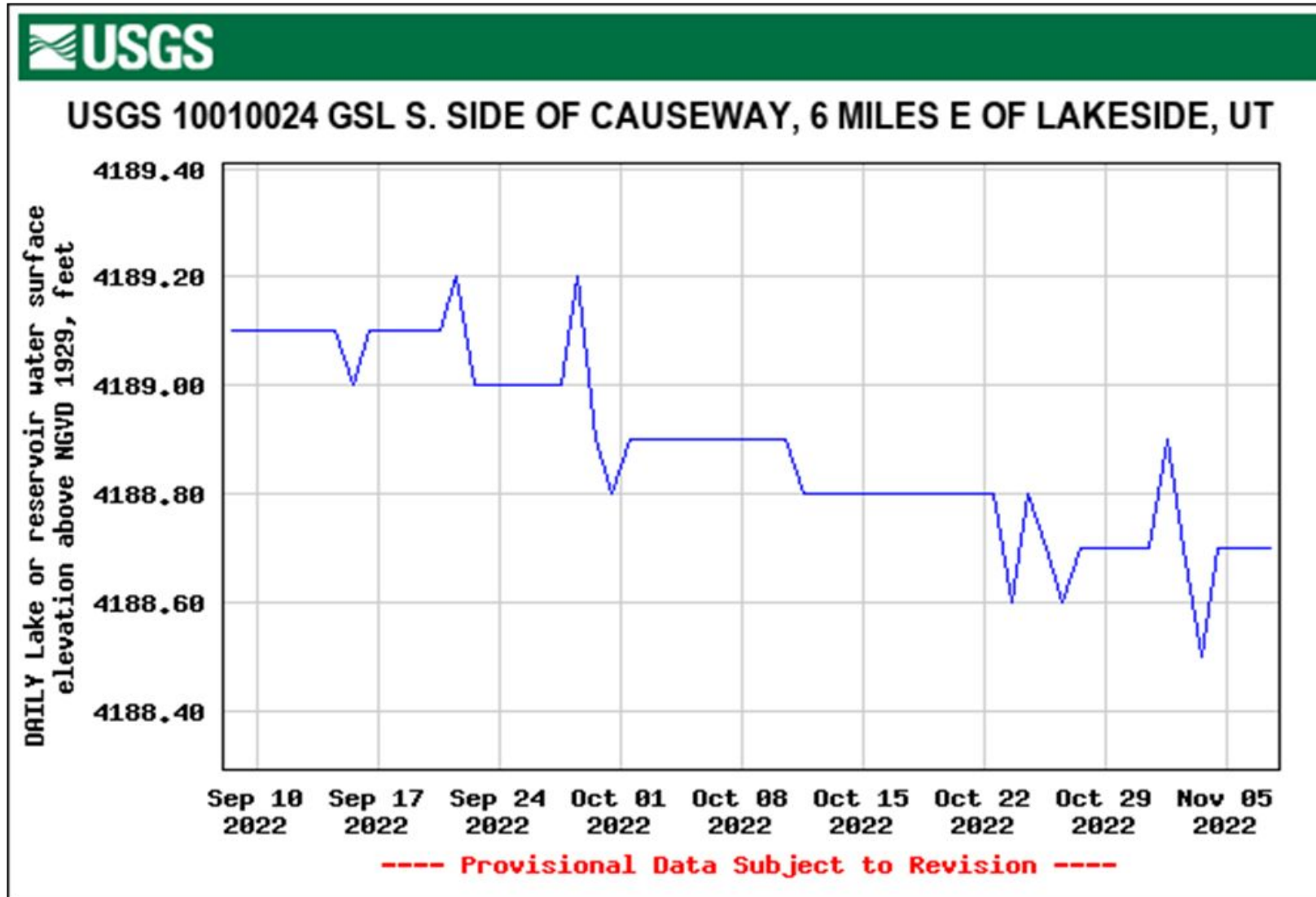
□ Area based runoff computed from mixed regulated and unregulated streamflows



Explanation - Percentile classes						
lowest-10th percentile	5	10-24	25-75	76-90	95	90th percentile-highest
Much below Normal	Below normal	Normal	Above normal	Much above normal		Runoff

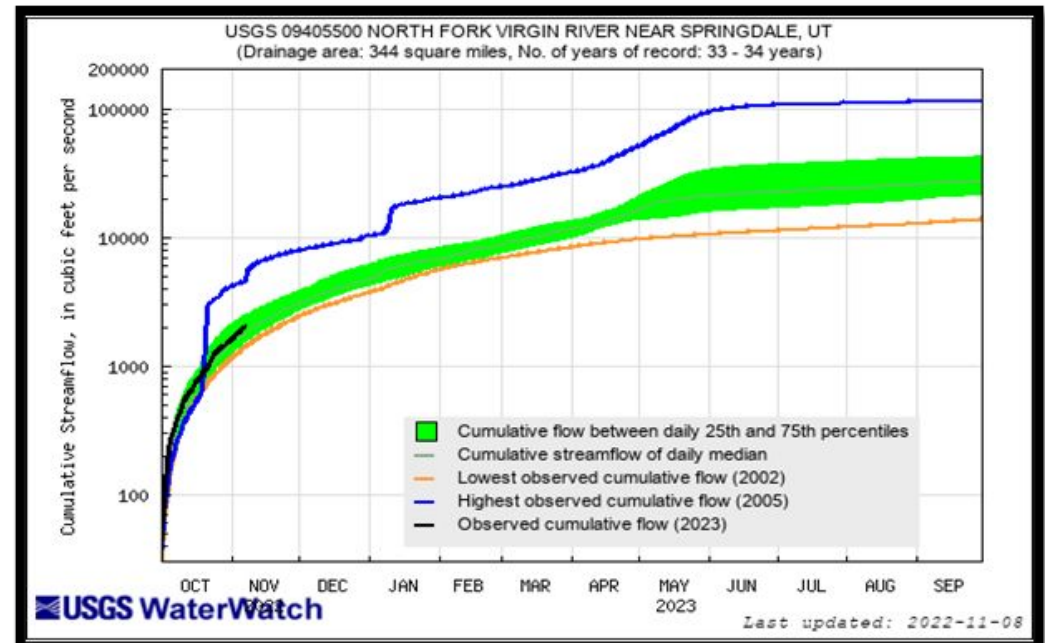
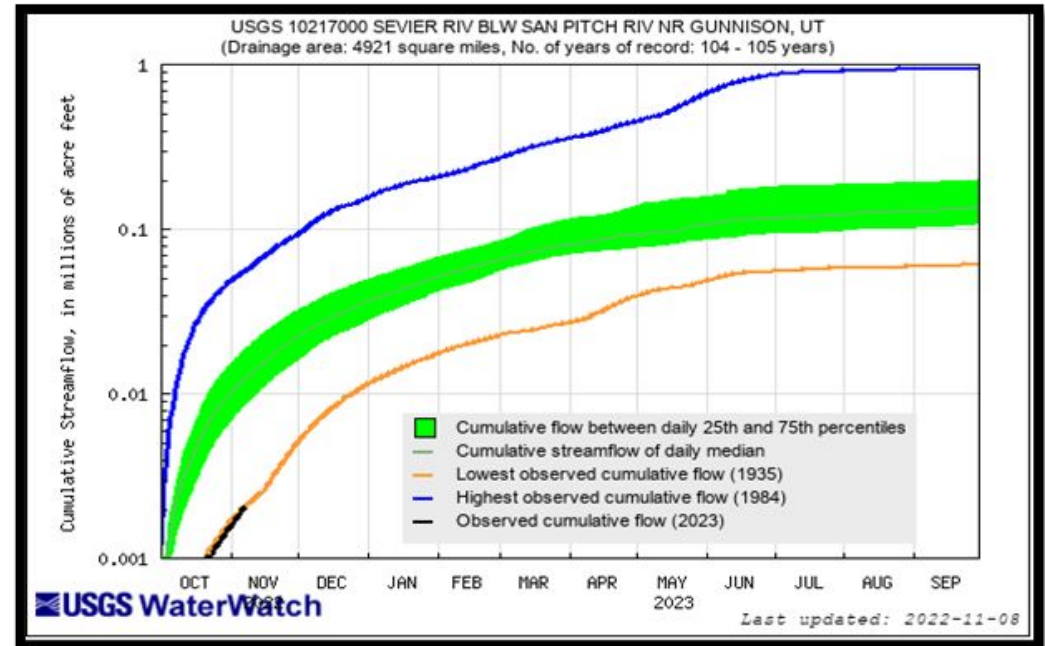
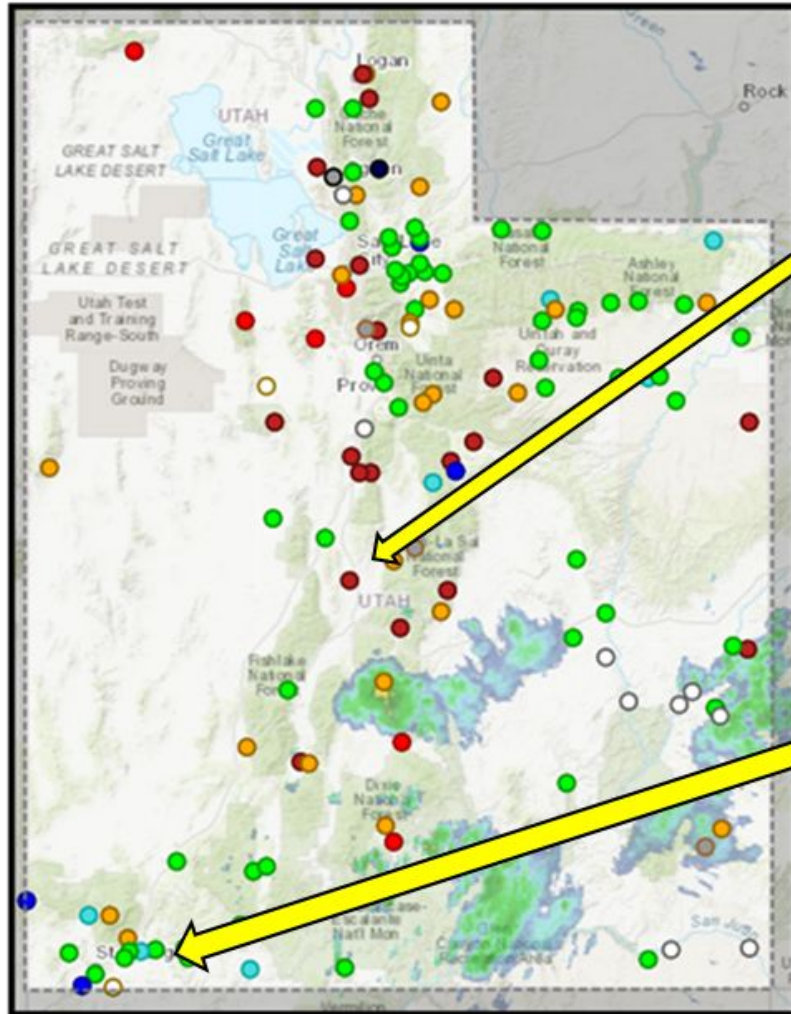


# Great Salt Lake Water Surface Elevation (south arm)



- ❑ Mean daily value 11/07/2022 = 4,188.7'
- ❑ Mean daily value 10/10/2022 = 4,188.9'
- ❑ Currently 2.7' below seasonal max in April

# Streamflow at selected gages





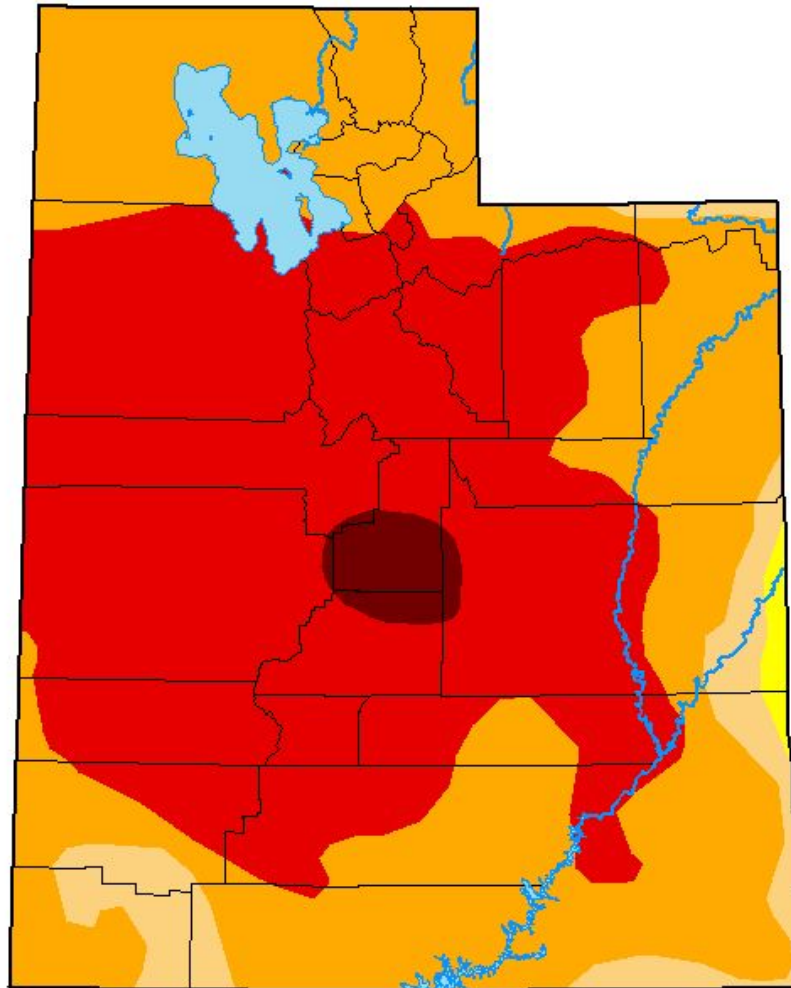


**Ryan Rowland**  
**Data Chief**  
**USGS Utah Water**  
**Science Center**  
**[rrowland@usgs.gov](mailto:rrowland@usgs.gov)**  
**Office: 801-908-5036**  
**Cell: 801-573-8716**



# U.S. Drought Monitor

## Utah



**November 1, 2022**  
(Released Thursday, Nov. 3, 2022)  
Valid 8 a.m. EDT

### Intensity:

- None
- D0 Abnormally Dry
- D1 Moderate Drought
- D2 Severe Drought
- D3 Extreme Drought
- D4 Exceptional Drought

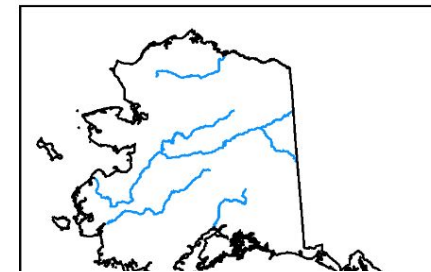
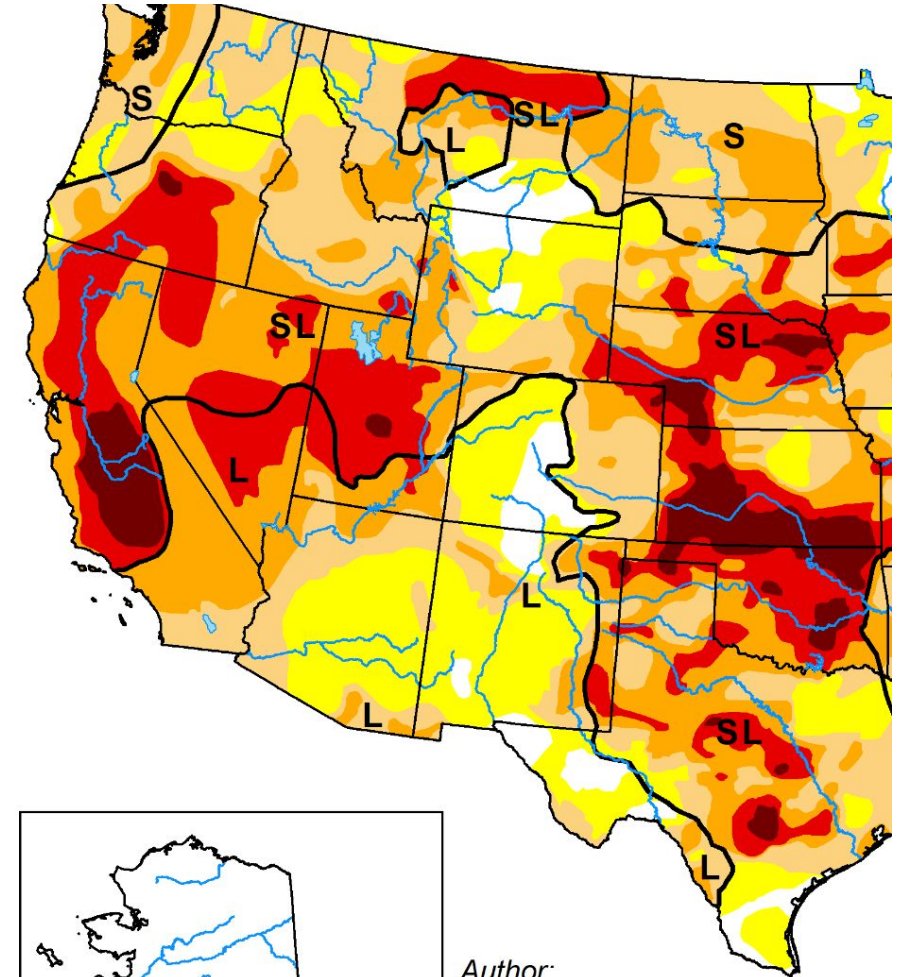
The Drought Monitor focuses on broad-scale conditions. Local conditions may vary. For more information on the Drought Monitor, go to <https://droughtmonitor.unl.edu/About.aspx>

### Author:

Brian Fuchs  
National Drought Mitigation Center



[droughtmonitor.unl.edu](https://droughtmonitor.unl.edu)



### Author:

Brian Fuchs  
National Drought Mitigation Center