

EXECUTIVE SUMMARY

The Utah Division of Water Resources (WRe) and United States Bureau of Reclamation (Reclamation) are together undertaking an unprecedented collaborative effort to develop a Great Salt Lake Basin Integrated Plan (GSLBIP). This Work Plan for the *Great Salt Lake Basin Integrated Plan* (Work Plan) provides a roadmap to successfully complete the GSLBIP by November 30, 2026.

Goal of the GSLBIP

Ensure a resilient water supply for Great Salt Lake and all water uses, including people and the environment, throughout the watershed.



THE NEED AND CHALLENGE

Declining water levels in our lakes, reservoirs, rivers, and the Great Salt Lake (GSL) emphasize that our water supply is limited. Continued growth places additional demands on a water supply already declining due to drought and climate change. A resilient water supply that supports the requirements of all uses within the watershed is needed for generations to come. Ensuring a resilient water supply requires extraordinary vision and a collaborative effort. Solutions remain socially and technically complex as demands on this limited resource continue to increase. A GSLBIP will provide a roadmap to understanding, collaboration, decisions, and action. Today's water management decisions through the GSLBIP will shape tomorrow's possibilities.

Key Objectives of the GSLBIP

- ✓ Forge Connections
- ✓ Develop a Shared Understanding
- ✓ Quantify Water Resources
- ✓ Evaluate Options
- ✓ Recommend Actions

AN INTEGRATED, COLLABORATIVE PROCESS

Connection (of individuals), a shared understanding (of the issues, concerns, options, tradeoffs, and decisions), and a commitment to a shared outcome are the critical elements that will create trust and enable our success. This Work Plan outlines an integrated collaborative process (Figure ES-1) that provides a process to drive consensus and durable outcomes. This collaborative process will engage stakeholders from throughout the GSL watershed to participate in developing sustainable and defensible solutions and choose and enable successful long-term implementation (Figure ES 2).

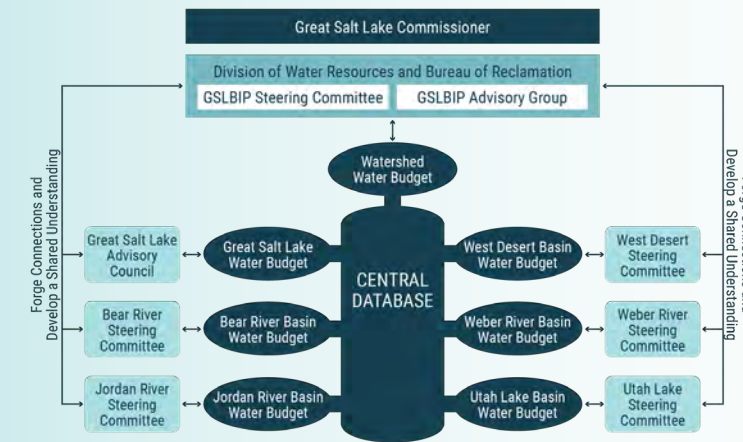
Figure ES-1. Integrated, Collaborative Process for the Work Plan for the Great Salt Lake Basin Integrated Plan



A ROADMAP TO ACTION

The GSLBIP project team completed a comprehensive gap analysis to inform the development of this Work Plan. Information collected from conducting interviews, sponsoring workshops, and reviewing available literature was organized into a database and used to identify strengths, gaps in available resources, and opportunities for capacity development and further study. The gap analysis was the point of origin for a roadmap for this Work Plan.

Figure ES-2. Stakeholder Integration into Great Salt Lake Basin Integrated Plan Development



Opportunities identified by the gap analysis were prioritized with input from the GSLBIP Advisory Group and GSLBIP Steering Committee based upon the capacity of those opportunities to meet the following criteria: (1) inform decisions to be made by 2026, (2) build a foundation for the future, and (3) be completed within the prescribed GSLBIP timeline and budget. These opportunities were then organized into five tracks (Figure ES-3) that, along with the GSLBIP integrated, collaborative process depicted on Figure ES-2, form the roadmap for this Work Plan (Figure ES-4).

Proposed work to be completed as part of the Making Decision Track (Figure ES-3) will integrate people and tools within a structured process designed to identify and solve problems and make decisions; this is the central effort of the GSLBIP that achieves the requirements of Utah House Bill 429 and Reclamation, and all GSLBIP activities will inform this core effort. The Making Decisions Track comprises three components that will inform GSLBIP decisions: (1) integrated collaborative process, (2) scenario planning process, and (3) data and model framework. This Work Plan additionally recommends four additional tracks (Strategic Research, Solution Development, Capacity Development, and Policy Opportunities), depicted on the outer ring of Figure ES-3 that, when completed in tandem with short-term opportunities and the efforts of many others, such as the gap analysis, will best inform decisions to be made during 2026, build a foundation for future decisions beyond 2026, and be completed within the prescribed GSLBIP timeline and budget (Figure ES-4). Total available funding for the GSLBIP is \$8.1 million.

Figure ES-3. Five Tracks of the Roadmap for the Work Plan for the Great Salt Lake Basin Integrated Plan



Figure ES-4. Roadmap of Studies for the Great Salt Lake Basin Integrated Plan Work Plan

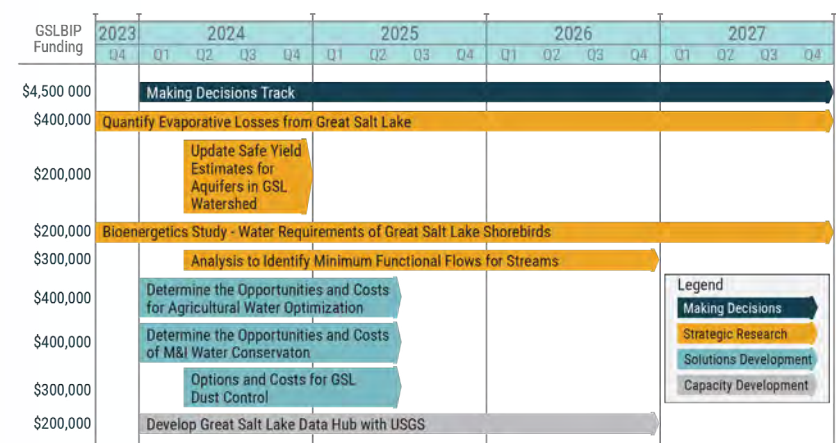
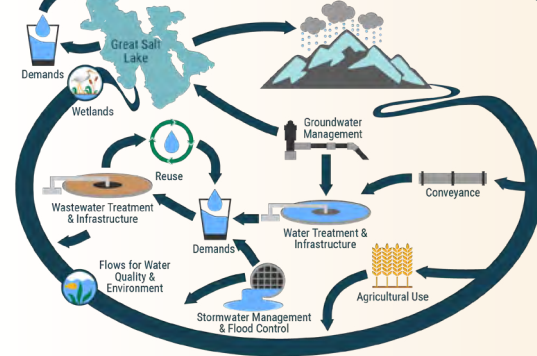


Figure ES-5. The Great Salt Lake Watershed: One Water, One Community



MOVING FORWARD

GSLBIP development will require innovation, flexibility, transparency, collaboration, and compromise to achieve the desired consensus. Meeting the GSL watershed's water and management challenges must be overcome and cannot wait. The GSLBIP must result in a timely action plan that the public will support and decision-makers can feasibly implement. We all use and rely upon one water (Figure ES-5); that one water is what makes our watershed one community, and it will take one community to preserve our one water for future generations.

The water legacy we will leave to future generations is on the line.

