



DRAFT

November 15, 2023

Work Plan for the
GREAT SALT LAKE BASIN
INTEGRATED PLAN



This page intentionally left blank

EXECUTIVE SUMMARY

The Utah Division of Water Resources (WRe) and United States Bureau of Reclamation (Reclamation) are together undertaking an unprecedented collaborative effort to develop a Great Salt Lake Basin Integrated Plan (GSLBIP). This Work Plan for the *Great Salt Lake Basin Integrated Plan* (Work Plan) provides a roadmap to successfully complete the GSLBIP by November 30, 2026.

Goal of the GSLBIP

Ensure a resilient water supply for Great Salt Lake and all water uses, including people and the environment, throughout the watershed.



THE NEED AND CHALLENGE

Declining water levels in our lakes, reservoirs, rivers, and the Great Salt Lake (GSL) emphasize that our water supply is limited. Continued growth places additional demands on a water supply already declining due to drought and climate change. A resilient water supply that supports the requirements of all uses within the watershed is needed for generations to come. Ensuring a resilient water supply requires extraordinary vision and a collaborative effort. Solutions remain socially and technically complex as demands on this limited resource continue to increase. A GSLBIP will provide a roadmap to understanding, collaboration, decisions, and action. Today's water management decisions through the GSLBIP will shape tomorrow's possibilities.

Key Objectives of the GSLBIP

- ✓ Forge Connections
- ✓ Develop a Shared Understanding
- ✓ Quantify Water Resources
- ✓ Evaluate Options
- ✓ Recommend Actions

AN INTEGRATED, COLLABORATIVE PROCESS

Connection (of individuals), a shared understanding (of the issues, concerns, options, tradeoffs, and decisions), and a commitment to a shared outcome are the critical elements that will create trust and enable our success. This Work Plan outlines an integrated collaborative process (Figure ES-1) that provides a process to drive consensus and durable outcomes. This collaborative process will engage stakeholders from throughout the GSL watershed to participate in developing sustainable and defensible solutions and choose and enable successful long-term implementation (Figure ES 2).

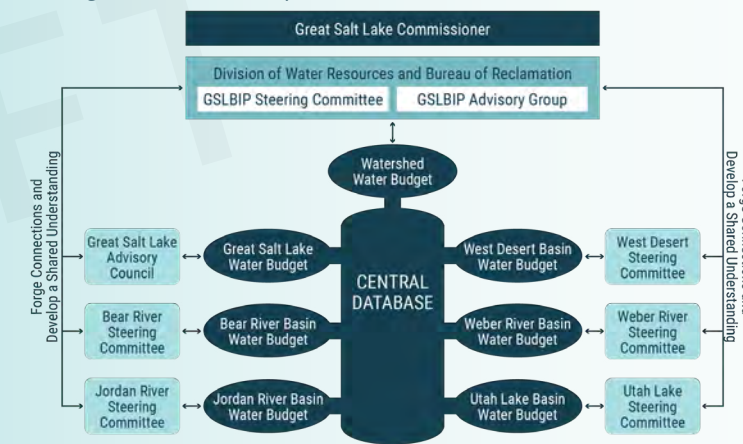
Figure ES-1. Integrated, Collaborative Process for the Work Plan for the Great Salt Lake Basin Integrated Plan



A ROADMAP TO ACTION

The GSLBIP project team completed a comprehensive gap analysis to inform the development of this Work Plan. Information collected from conducting interviews, sponsoring workshops, and reviewing available literature was organized into a database and used to identify strengths, gaps in available resources, and opportunities for capacity development and further study. The gap analysis was the point of origin for a roadmap for this Work Plan.

Figure ES-2. Stakeholder Integration into Great Salt Lake Basin Integrated Plan Development



that achieves the requirements of Utah House Bill 429 and Reclamation, and all GSLBIP activities will inform this core effort. The Making Decisions Track comprises three components that will inform GSLBIP decisions: (1) integrated collaborative process, (2) scenario planning process, and (3) data and model framework. This Work Plan additionally recommends four additional tracks (Strategic Research, Solution Development, Capacity Development, and Policy Opportunities), depicted on the outer ring of Figure ES-3 that, when completed in tandem with short-term opportunities and the efforts of many others, such as the gap analysis, will best inform decisions to be made during 2026, build a foundation for future decisions beyond 2026, and be completed within the prescribed GSLBIP timeline and budget (Figure ES-4). Total available funding for the GSLBIP is \$8.1 million.

Opportunities identified by the gap analysis were prioritized with input from the GSLBIP Advisory Group and GSLBIP Steering Committee based upon the capacity of those opportunities to meet the following criteria: (1) inform decisions to be made by 2026, (2) build a foundation for the future, and (3) be completed within the prescribed GSLBIP timeline and budget. These opportunities were then organized into five tracks (Figure ES-3) that, along with the GSLBIP integrated, collaborative process depicted on Figure ES-2, form the roadmap for this Work Plan (Figure ES-4).

Proposed work to be completed as part of the Making Decision Track (Figure ES-3) will integrate people and tools within a structured process designed to identify and solve problems and make decisions; this is the central effort of the GSLBIP

Figure ES-3. Five Tracks of the Roadmap for the Work Plan for the Great Salt Lake Basin Integrated Plan



Figure ES-4. Roadmap of Studies for the Great Salt Lake Basin Integrated Plan Work Plan

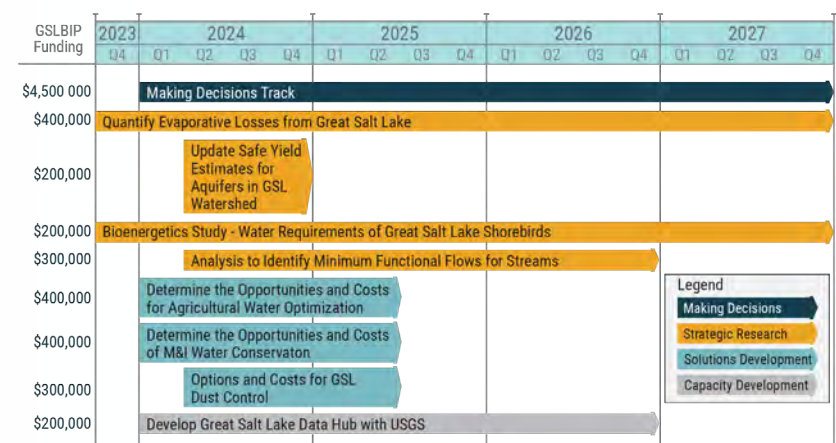
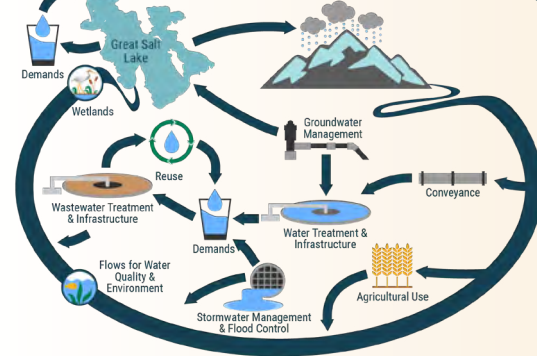


Figure ES-5. The Great Salt Lake Watershed: One Water, One Community



MOVING FORWARD

GSLBIP development will require innovation, flexibility, transparency, collaboration, and compromise to achieve the desired consensus. Meeting the GSL watershed's water and management challenges must be overcome and cannot wait. The GSLBIP must result in a timely action plan that the public will support and decision-makers can feasibly implement. We all use and rely upon one water (Figure ES-5); that one water is what makes our watershed one community, and it will take one community to preserve our one water for future generations.

The water legacy we will leave to future generations is on the line.

This page intentionally left blank

ACKNOWLEDGEMENTS

Advisory Group

Blake Bingham, Utah Division of Water Rights
 Jim Bowcutt, Utah Department of Agriculture and Food
 Jim Harris, Utah Division of Water Quality
 Candice Hasenyager, Utah Division of Water Resources
 Hugh Hurlow, Utah Geological Survey
 Dagmar Llewellyn, U.S. Bureau of Reclamation
 John Luft, Utah Division of Wildlife Resources
 John Mackey, Utah Division of Water Quality
 David O'Leary, U.S. Geological Survey
 Chris Pennell, Utah Division of Air Quality
 Ryan Rowland, U.S. Geological Survey
 Dwight Slauch, U.S. Bureau of Reclamation
 Brian Steed, GSL Commissioner's Office
 Ben Stireman, Utah Division of Forestry,
 Fire & State Lands
 Paul Thompson, Utah Division of Wildlife Resources
 Laura Vernon, Utah Division of Water Resources
 Marisa Weinberg, Utah Division of Forestry,
 Fire & State Lands
 Felix Yeung, U.S. Army Corps of Engineers

Consultants

Jacobs Engineering Group Inc
 The Langdon Group
 Hansen Allen & Luce
 Clyde Snow & Sessions

Steering Committee

Connelly Baldwin, Rocky Mountain Power
 Laura Briefer, Salt Lake City Department of Public
 Utilities
 Derek Bruton, Central Utah Water Conservancy District
 Gary Calder, Provo City
 Lynn de Freitas, FRIENDS of Great Salt Lake
 Nathan Daug, Cache Water District
 Wade Garrett, Farm Bureau
 Joe Havasi, Compass Minerals
 Tim Hawkes, Great Salt Lake Brine Shrimp Cooperative
 Dustin Jansen, Utah Division of Indian Affairs
 Jess Kirby, Summit County
 Trevor Nielsen, Bear River Canal Company
 Jon Parry, Weber Basin Water Conservancy District
 Jack Ray, Utah Waterfowl Association
 Marcelle Shoop, National Audubon Society
 Soren Simonsen, Jordan River Commission
 Brian Steed, GSL Commissioner's Office
 Brent Tanner, Utah Cattlemen's Association
 David Tarboton, Utah State University
 Jacob Young, Jordan Valley Water Conservancy District
 Jeff Young, Ensign Ranch

Many Others

Thank you to the numerous individuals who participated in the situational assessment, interviews, workshops, meetings, and reviews of the many draft documents.

CONTENTS

1 - INTRODUCTION	1
About This Work Plan	2
Great Salt Lake Watershed Study Area	3
The Challenge to Overcome	4
The Goal to Achieve	5
Objectives for the Great Salt Lake Basin Integrated Plan	6
The Expected Outcome	7
2 - INTEGRATING PARTNERS AND ACTIVITIES	8
Partners and Participants	8
Ongoing Activities to be Integrated into the Great Salt Lake Basin Integrated Plan	10
Funding Sources	10
3 - AN INTEGRATED COLLABORATIVE PROCESS	14
Construction of an Integrated Collaborative Process	14
Essential Strategies	15
Integrated Collaborative Process	17
Decision-Making Process	19
Success Metrics	20
4 - A ROADMAP TO ACTION	21
Gap Analysis	21
A Roadmap for the Work Plan for the Great Salt Lake Basin Integrated Plan	22
Strategic Research	27
Solutions Development	27
Capacity Development	27
Policy Opportunities	31
Summary	31
5 - NEXT STEPS	33
A Story of One Lake, One Community	33
A View for One Water, One Community	34
Moving Forward	34
REFERENCES	35

APPENDICES

- A Challenge Statement Development Technical Memorandum
- B Situational Assessment Report
- C Communications and Outreach Plan
- D Short Term Opportunities Technical Memorandum
- E Policy Review Technical Memorandum
- F Technical Sufficiency Review Plan Technical Memorandum
- G Gap Analyses Report
- H Scoping Plan for the Water Resources Planning Tool
- I Scope of Work for Decision-Making
- J Project Summaries

TABLES

Table 1-1.	Requirements for This Work Plan	2
Table 2-1.	Growing Partnership Committed to the Great Salt Lake Basin Integrated Plan	9
Table 2-2.	Critical Activities to be Integrated into the Great Salt Lake Basin Integrated Plan Development	11
Table 4-1.	Cost Summary for Great Salt Lake Basin Integrated Plan Projects	31

FIGURES

Figure 1-1.	Great Salt Lake Watershed Study Area	3
Figure 2-1.	Elements to be Integrated as Part of the Great Salt Lake Basin Integrated Plan	8
Figure 3-1.	Connecting Communities within Their River Basins and with Their Watershed and Great Salt Lake	16
Figure 3-2.	The Integrated Collaborative Process: Framework to Drive Consensus and Durable Outcomes	17
Figure 3-3.	Integrating Stakeholders into Great Salt Lake Basin Integrated Plan Development	18
Figure 3-4.	Great Salt Lake Basin Integrated Plan Decision Hierarchy	19
Figure 4-1.	The Five Tracks and Integrated Collaborative Process of the Work Plan for the Great Salt Lake Basin Integrated Plan Roadmap	22
Figure 4-2.	Three Components of the Making Decisions Track of the Work Plan.	23
Figure 4-3.	General Steps Involved in the Scenario Planning Process	23
Figure 4 4.	Conceptual Representation of a System’s Uncertain Future (also known as the Cone of Uncertainty) Source: Adapted from Timpe and Scheepers, 2003.	24
Figure 4-5.	Decision Horizons for the Great Salt Lake Basin Integrated Plan	25
Figure 4-6.	Model Development Schedule	25
Figure 4-7.	Decision-Making Tasks and Schedule for the Work Plan for the Great Salt Lake Basin Integrated Plan	26
Figure 4-8.	Targeted Strategic Research Studies	28
Figure 4-9.	Targeted Studies for Solutions Development.	29
Figure 4-10.	Prioritized Studies for Capacity Development	30
Figure 4-11.	Studies Roadmap of the Work Plan for the Great Salt Lake Basin Integrated Plan	32
Figure 5-1.	Great Salt Lake One Water	34

ACRONYMS AND ABBREVIATIONS

\$	United States 2023 dollars
DWR	Utah Division of Wildlife Resources
WRe	Utah Division of Water Resources
WRi	Utah Division of Water Rights
FFSL	Utah Division of Forestry, Fire & State Lands
GSL	Great Salt Lake
GSLAC	Great Salt Lake Advisory Council
GSLBIP	Great Salt Lake Basin Integrated Plan
GSLEP	Great Salt Lake Ecosystem Program
H.B.	House Bill
IWA	Integrated Water Assessment
IWAA	Integrated Water Availability Assessment
Reclamation	United States Bureau of Reclamation
SAC	Salinity Advisory Committee
Trust	Great Salt Lake Watershed Enhancement Trust
UDAF	Utah Department of Agriculture and Food
USACE	United States Army Corps of Engineers
USGS	United States Geological Survey