

Cloud Seeding Frequently Asked Questions

What is cloud seeding?

- Is a form of weather modification.
- Improves the efficiency of a cloud's ability to produce rain or snow.
- Sends a high number of ice nuclei into a cloud similar to their natural counterparts like airborne salt, soils and bacteria.

Why cloud seed in Utah?

- Snowpack generates up to 95% of Utah's annual water supply.
- Increasing the snowpack increases water supply.
- Utah's clouds are often pushed up against mountains rapidly, creating supercooled liquid water. This below-freezing water does not grow large enough to fall as precipitation.
- Cloud seeding adds material to clouds so that the supercooled water condenses. This allows more water to fall as precipitation.

When does cloud seeding take place in Utah?

- November through April to augment the snowpack.
- During precipitation events over targeted mountain ranges (see Figure 1).
- Never during clear conditions with no precipitation occurring.
- Cloud seeding efforts are not responsible for condensation trails from aircraft. Cloud seeding operations take place in clouds at altitudes below 13,000 feet and only during precipitation events.

How effective is cloud seeding in Utah?

- Target and control evaluation provides estimates of a 6-12% increase in precipitation.
- Per the Division of Water Resources, an increase of streamflow of 180,000 acre-feet to 200,000 acre-feet during spring runoff, which is more water than Deer Creek holds (147,000 acre-feet).
- Other programs across the U.S. and the world show an upwards to 10-15% increase per 2016 Weather Modification Association statement on capabilities.

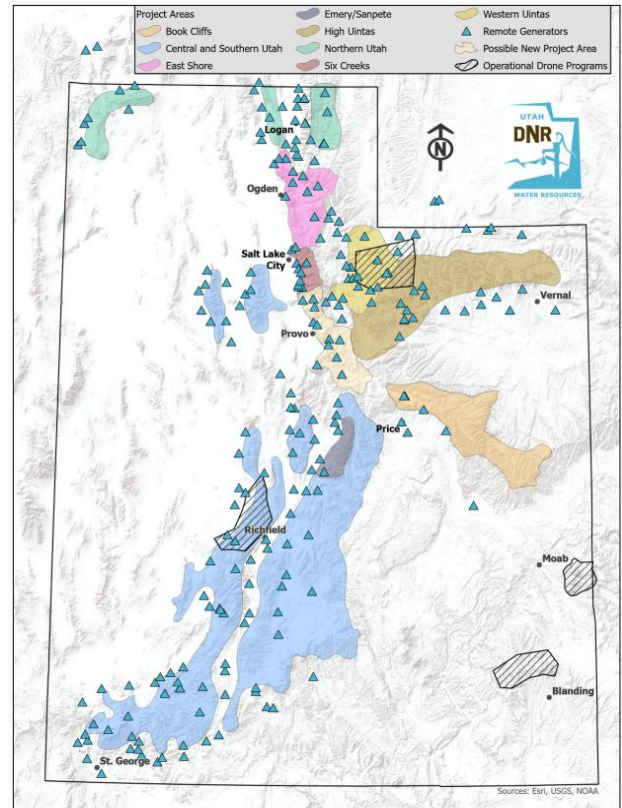


Figure 1. Cloud seeding target areas with manual and remote generator locations and aerial flight paths.



How is cloud seeding conducted in Utah?

Cloud seeding in Utah uses both ground-based and aerial techniques. The goal is to release a material into the cloud that interacts with the small, supercooled cloud droplets resulting in the development of ice particles allowing for more efficient growth. Ice particles then become heavy enough to fall as additional snowfall, adding to mountain snowpack. During the spring, this additional snowpack is melted and runs off into our lakes, rivers, streams and reservoirs.

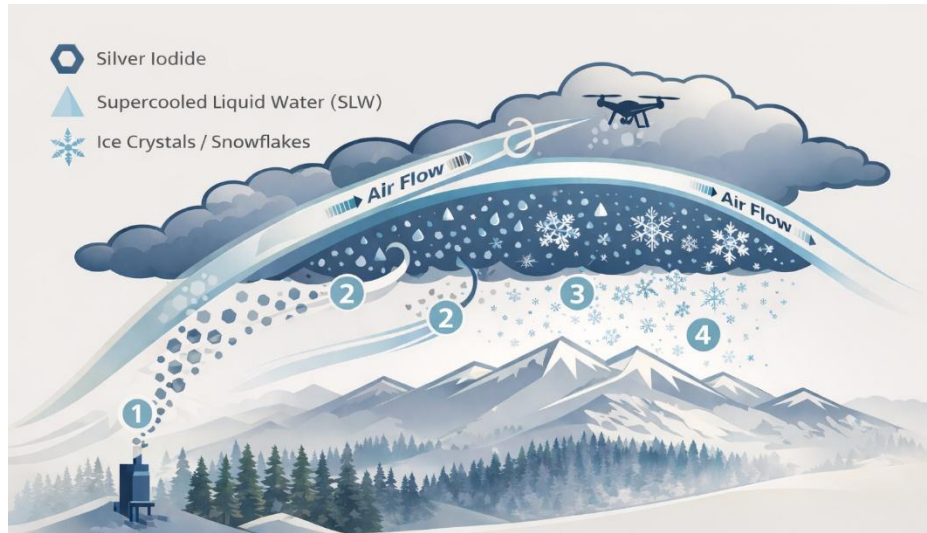


Figure 2. Cloud seeding graphic showing how material from our ground based and drone-based units are dispersed.

Ground-Based

- Ground-based generators sit on foothills or at high elevations (6,000-9,000 feet).
- Wind flows perpendicular to the mountain ranges, which lifts and disperses the seeding material throughout the cloud.
- Generators run for the seedable duration of a storm.



Figure 3. Utah's remotely operated ground-based generator.

Aerial

- Drones fly in approved areas by the Federal Aviation Administration.
- Drones are flown within the supercooled cloud layer and seeds based on temperature and liquid water profiles.
- A meteorologist watches cloud parameters for the best seeding area.

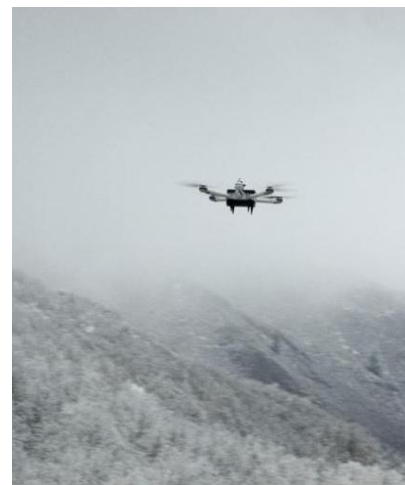


Figure 4. Rainmaker Technology Corporation Aerial Drone.

DIVISIONS



OFFICES





What materials are used in cloud seeding?

Both silver iodide and liquid propane are used in Utah. Silver iodide is structurally very similar to an ice crystal. This allows for cloud droplets that are below the freezing level but not yet able to freeze a material to freeze upon, causing precipitation. Meanwhile, liquid propane creates intense evaporative cooling that cools the surrounding air, making all liquid particles freeze instantaneously. Both methods are effective for seeding clouds along mountain ranges in Utah. Silver iodide has greater dispersion, but liquid propane can target warmer clouds in thinner columns.

Silver Iodide

- Structurally resembles an ice crystal.
- Converts supercooled liquid water into ice at temperatures from -23°F to -4°F.
- Generators run during seedable conditions, typically for long time periods. The seeding plume disperses both in the horizontal and vertical dimensions with time.

Liquid Propane

- Intense evaporative cooling converts liquid water into ice at temperatures from 32°F to -40°F.
- Must be dispersed in-cloud.
- The effectiveness of this method is being further researched.

Silver iodide particles from ground-based generators and aircraft measure in the 0.3-3 micrometer range, so they cannot be seen with the naked eye. These particles are released when winds are blowing towards the mountains, so they are not responsible for “black snow” or unnatural flakes over the valleys.

Is cloud seeding safe?

The amount of silver iodide released for cloud seeding in Utah represents 0.33% of all silver released by cloud seeding programs across the world per year. Additionally, the silver released in Utah for cloud seeding is 0.01% of all silver released into the atmosphere (Eisler 1996) across the world. Silver and iodine have a strong covalent bond that makes silver iodide unable to dissolve in water, so it is effective in saturated environments like supercooled cloud water. This bond keeps the free silver ion from dissolving away and becoming toxic in the environment. The maximum concentration of soluble (dissolved) silver in water is 0.984 µg/L (micrograms per liter), which is far below the standards for safe drinking water (100 µg/L), impacts to aquatic life (4.1 µg/L), algae (2-7 µg/L) and terrestrial plants (10-10,000 µg/L). This is also below the natural background levels of natural silver, which in Utah, Idaho and the Sierra Nevada Mountains are anywhere from 2-6 µg/L.

DIVISIONS



OFFICES





Does cloud seeding deplete moisture downwind of a project area?

When liquid water changes to ice, heat is released within the cloud, allowing it to expand both vertically and horizontally. This results in continued augmented precipitation outside of targeted areas, which is referred to as extra area effects (DeFelice et al. 2014). Even with cloud seeding, the amount of precipitation falling is a minimal amount of the overall moisture available (Figure 2). For example, most thunderstorms produce rainfall at 19% efficiency. A study conducted by Solak et al. (2003) showed an 8% increase in precipitation east of the target areas in Utah, which was further confirmed by a later study in 2011 by North American Weather Consultants. DeFelice et al. (2014) review further research into downwind impacts in their paper.

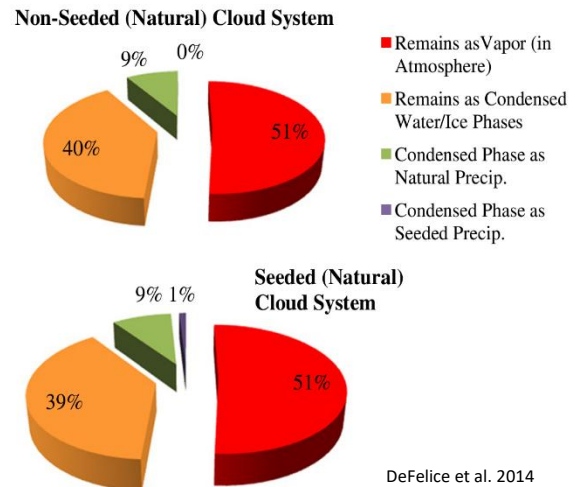


Figure 5. Amount of condensed water vapor in a seeded cloud vs. an unseeded cloud showing plentiful moisture available.

How is cloud seeding regulated?

Cloud seeding activities in Utah must be licensed and permitted. [The Cloud Seeding Act of 1973](#) gives the Division of Water Resources authority to approve licenses and permits if an applicant meets the requirements. All cloud seeding projects also must report to the National Oceanic and Atmospheric Administration annually before and after a cloud seeding project is conducted. There are also suspension criteria in place for potential flooding, severe weather and potential avalanche concerns.

Cloud seeding is a *long-term water management strategy* that is being used across the world to augment water supply. States such as Utah, Texas, Idaho, Colorado and California have been cloud seeding for over 30 years. Research shows it is an effective water management tool and that it is safe, inexpensive and non-invasive.

Contact

Jonathan Jennings, Utah Cloud Seeding Coordinator / Meteorologist

Jjennings@utah.gov | (801) 538-7262





References:

- DeFelice, T.P., J. Golden, D. Griffith, W. Woodley, D. Rosenfeld, D. Breed, M. Solak, and B. Boe. Extra Area Effects of Cloud Seeding – An Updated Assessment. *Jrnl. of Atmo. Rsch.* 136. 193-203.
- Eisler, R. (1996). Silver Hazards to Fish, Wildlife, and Invertebrates. A Synoptic Review. *Contaminant Hazard Reviews*, 32, Patuxent Wildlife Research Center, U.S. National Biological Service, Laurel, MD.
- Erdreich, L., R. Bruins, J. Withey (1985). Drinking Water Criteria Document for Silver (Final Draft). U.S. EPA, Washington, D.C., EPA/600/X-85/040 (NTIS PB86118288).
- Manton, M.J., and L. Warren, 2011: A Confirmatory Snowfall Enhancement Project in the Snowy Mountains of Australia: Part II: Primary and Associated Analysis. *J. Appl. Meteor. Climatol.*, 50, 1448-1458
- Nay, Ashley and C. Hasenyager, K.B. Khatri (access 2024, Feb 08). Utah Cloud Seeding Program, Increased Runoff and Cost Analysis. Water.utah.gov/wpcontent/uploads/2019/CloudSeeding/Cloudseeding2015Final.pdf
- Solak, M.E., D. Yorty, and D. Griffith (2003). Estimations of Downwind Cloud Seeding Effects in Utah. *J. Weather Modif.* 35, 52-38
- Stone, R.H. (1986). Sierra Lake Chemistry Study. Final Report Southern California Edison Co., Contract No. C2755903. Stone, R.H. (2006). 2006 Mokelumne Watershed Lake Water and Sediment Survey. Final Report to the Pacific gas and Electric Company., technical and Ecological Services, San Ramon, Ca.
- Tsiouris E.S., A.F. Aravanopoulos, N.L. Papadoyiannis, K.M., Sofoniou, N. Polyzopoulos, M.M., Christodoulous, F.V., Samanidou, A.G. Zachariadis, H., I.A. Constantinidou (2002a). Soil Silver Content of Agricultural Areas Subjected to Cloud Seeding with Silver Iodide. *Fresenius Environmental Bulletin*, 11, 697-702.
- Tsiouris E.S., A.F. Aravanopoulos, N.L. Papadoyiannis, K.M., Sofoniou, R.V. Samanidou, A.G. Zachariadis, H., I.A. Constantinidou (2002b). Soil Silver Mobility in Areas Subjected to Cloud Seeding with AgI. *Fresenius Environmental Bulletin*, 12, 1059-1063.
- Utah Division of Water Resources (access 2024, Feb 08). Snowpack. Water.utah.gov/snowpack
- Wyoming Water Development Commission (access 2024, Feb 08). The Wyoming Weather Modification Pilot Program, Level II Study. WWDC.state.wy.us/weathermod/WYWeatherModPilotProgramExecSummary.pdf

DIVISIONS



OFFICES

