

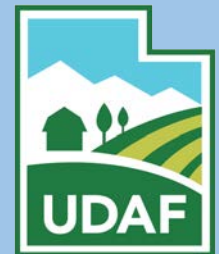


Utah Water Conditions Update (drought webinar)

The meeting will begin shortly



Thank you to our contributors

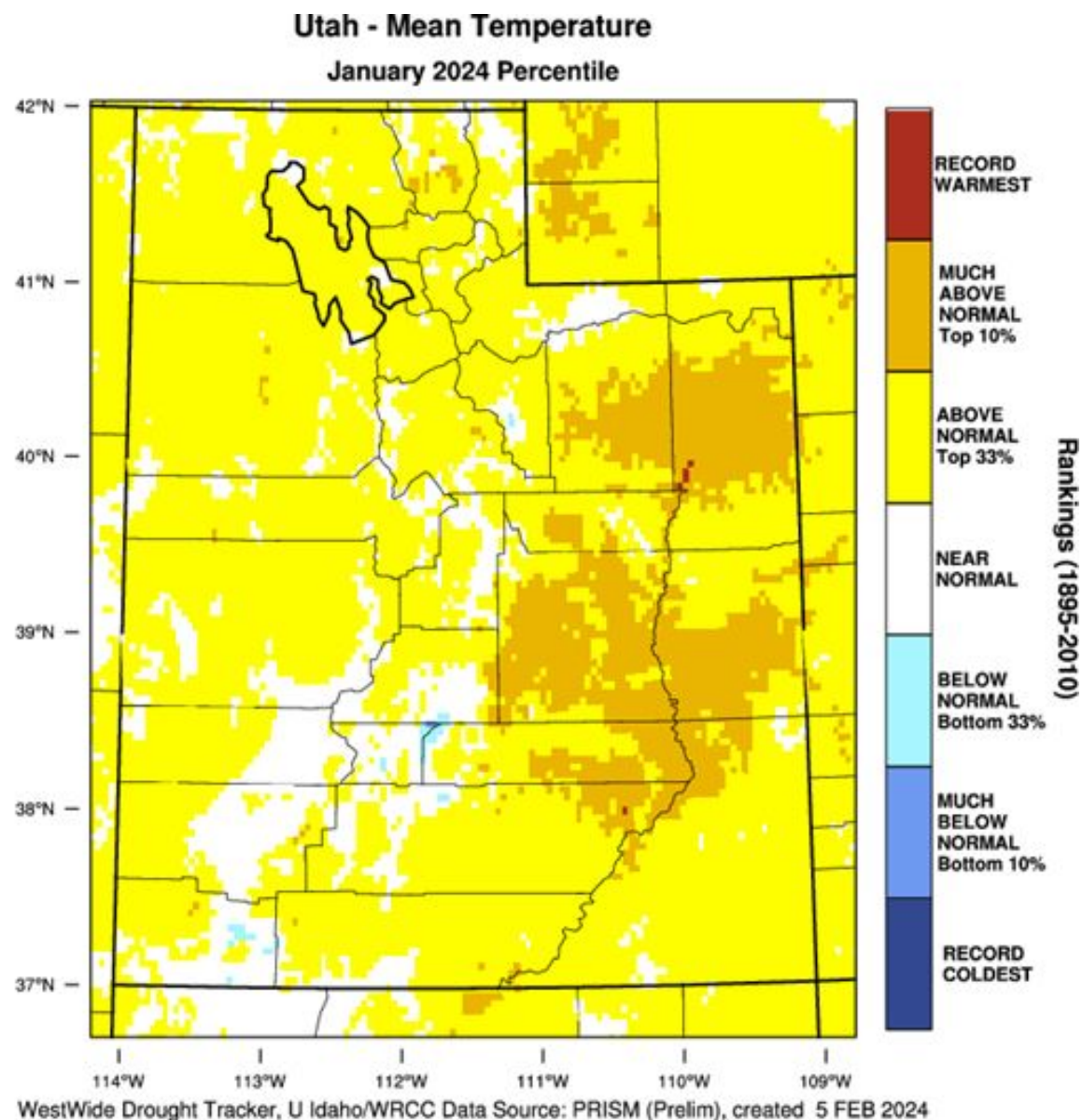
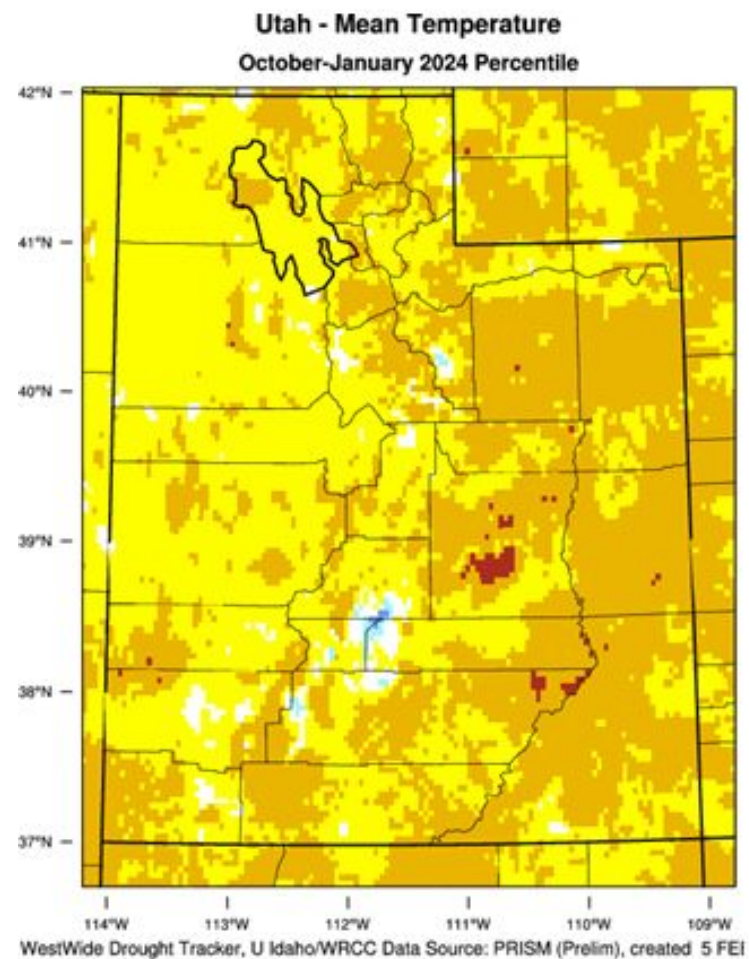




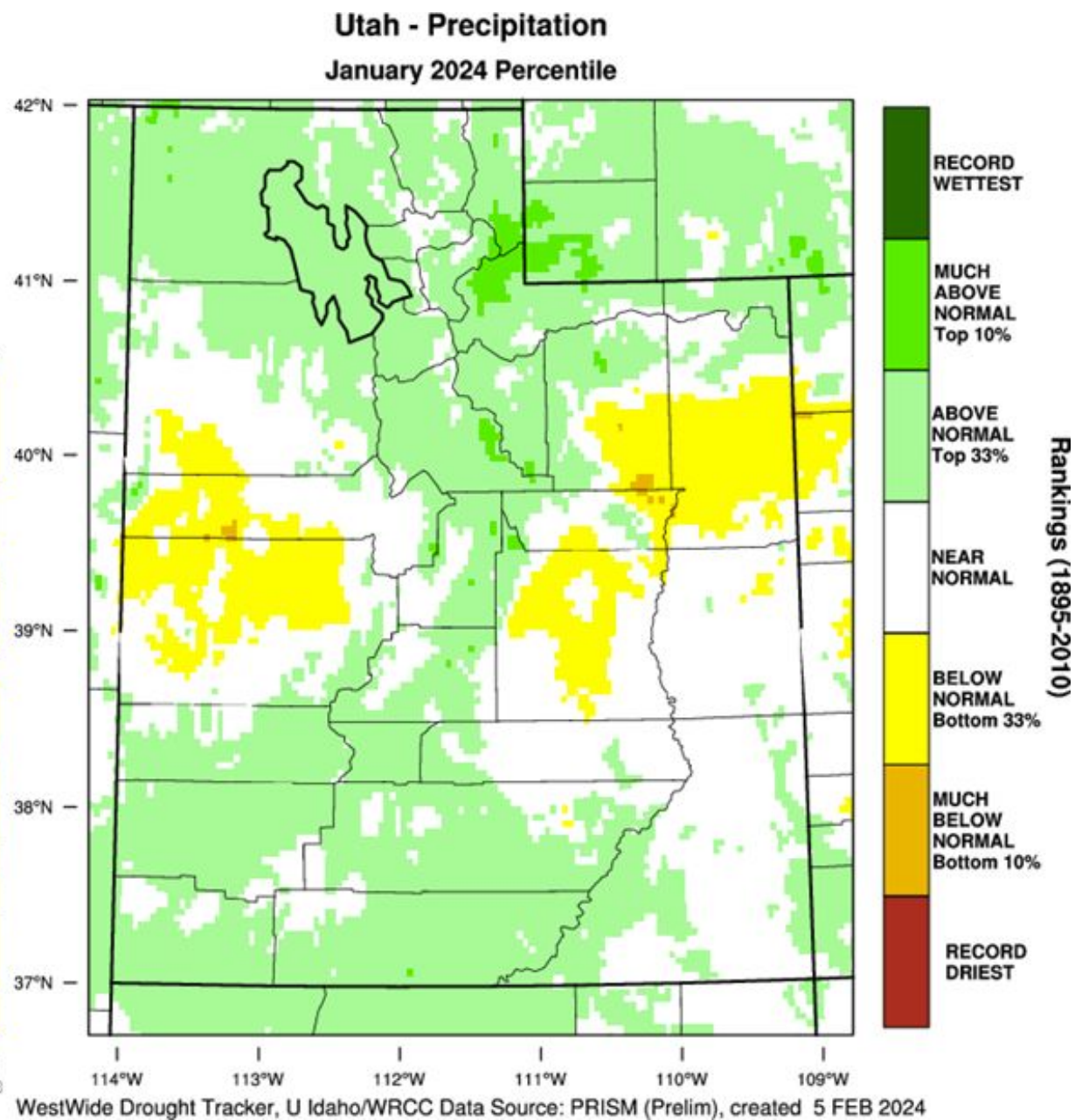
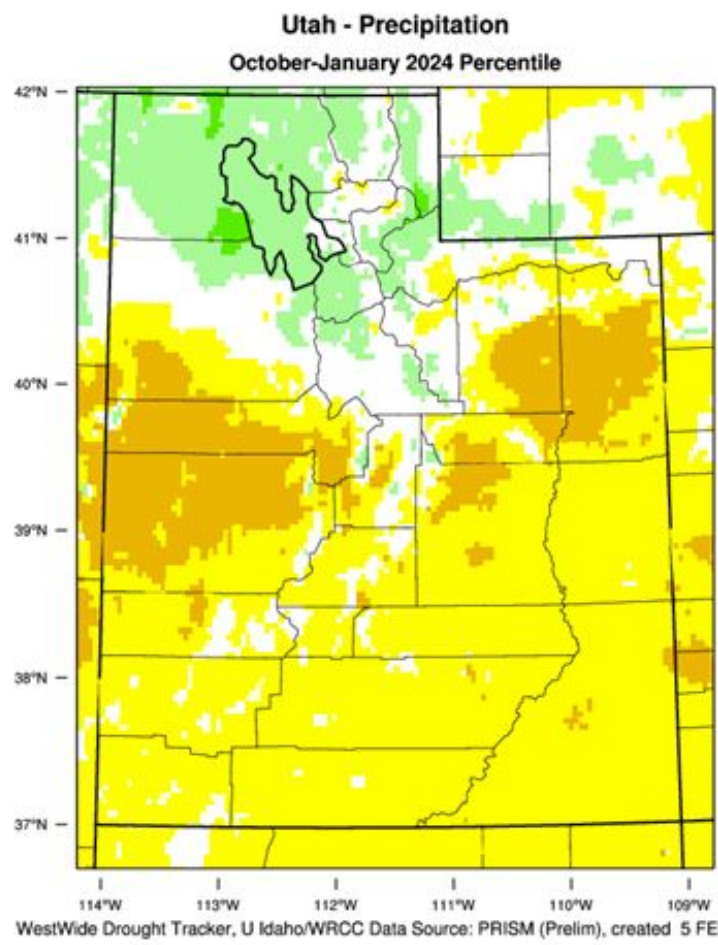
Utah Water Assessment & Conditions Monitoring Webinar

February 6, 2024

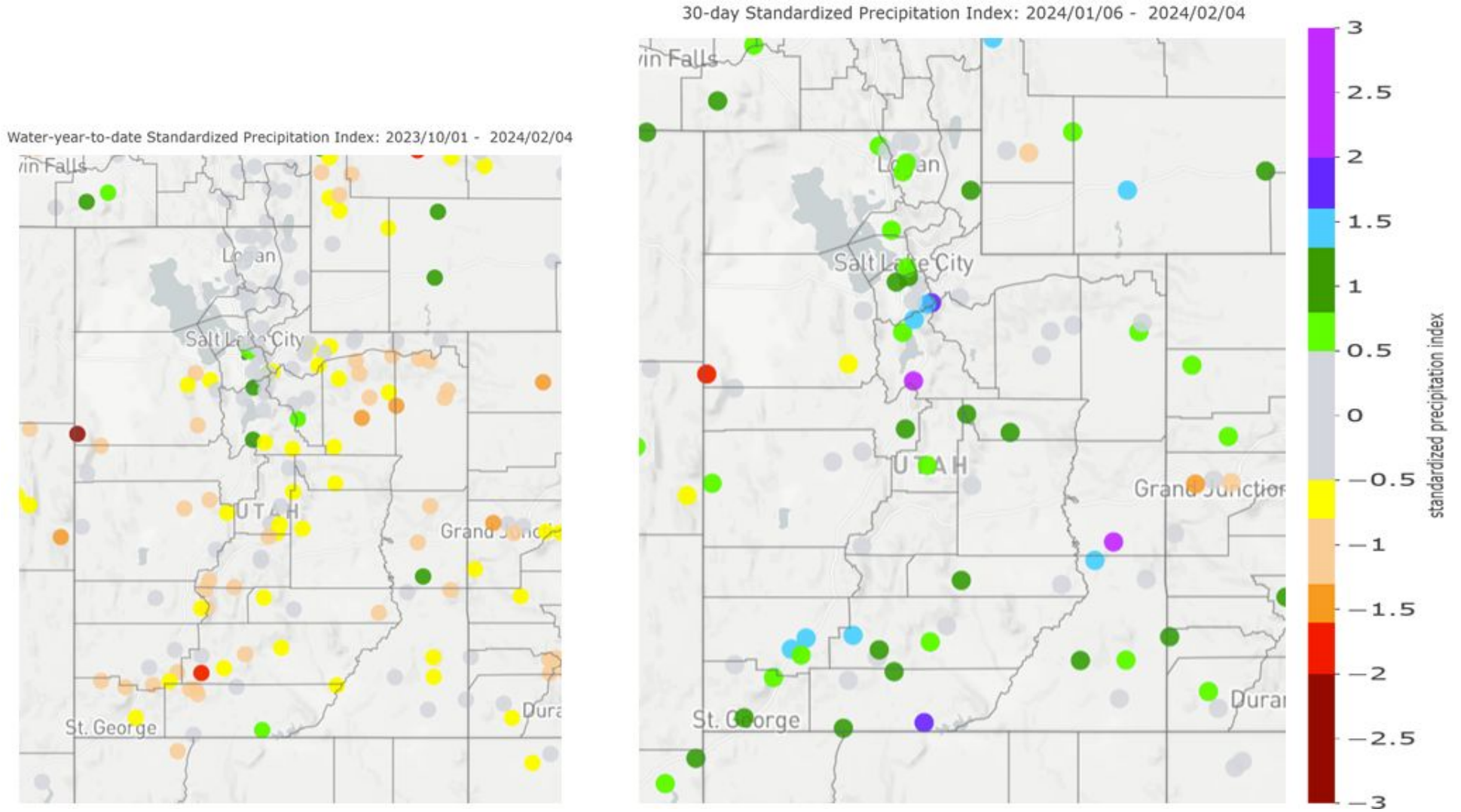
Temperatures



Precipitation



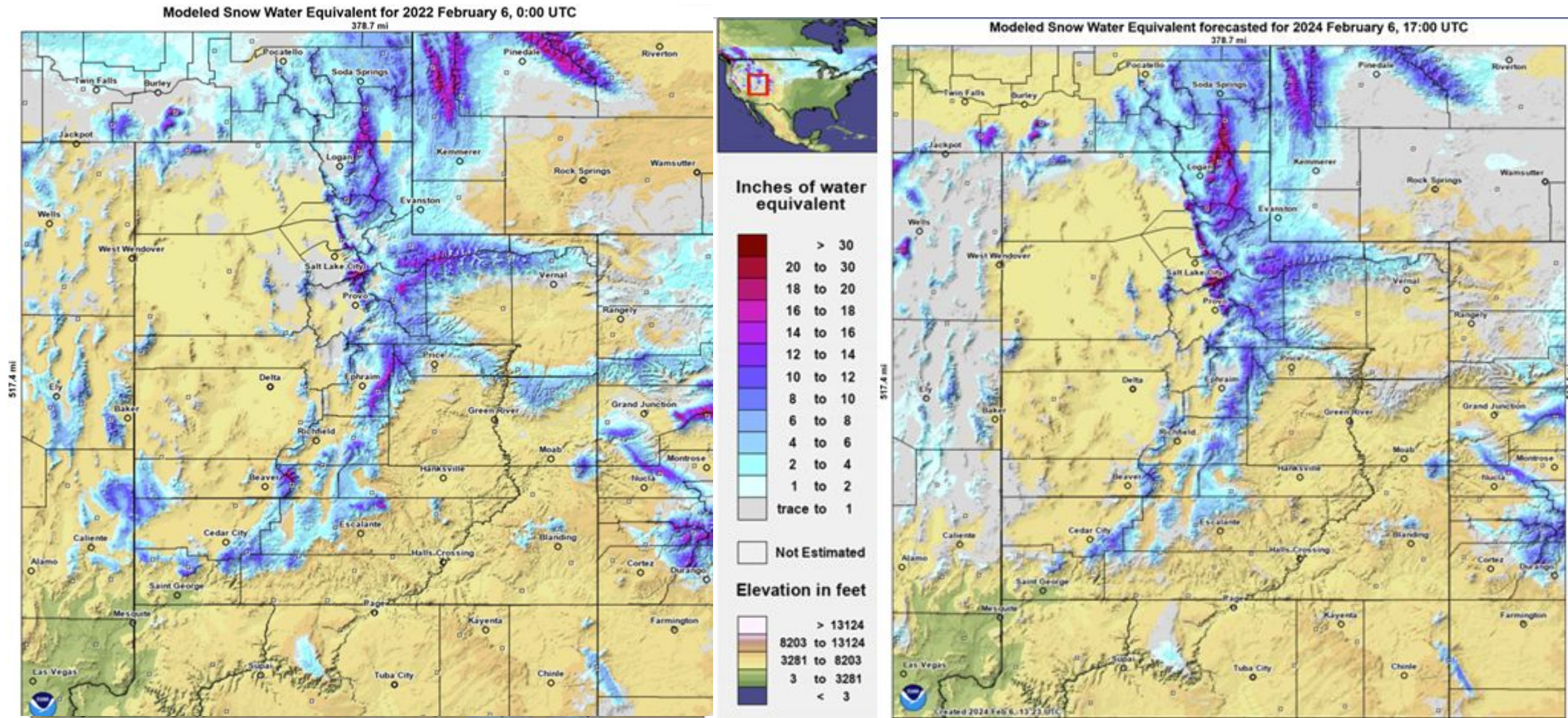
Standardized Precipitation Index (SPI)



Agency - Utah Climate Center

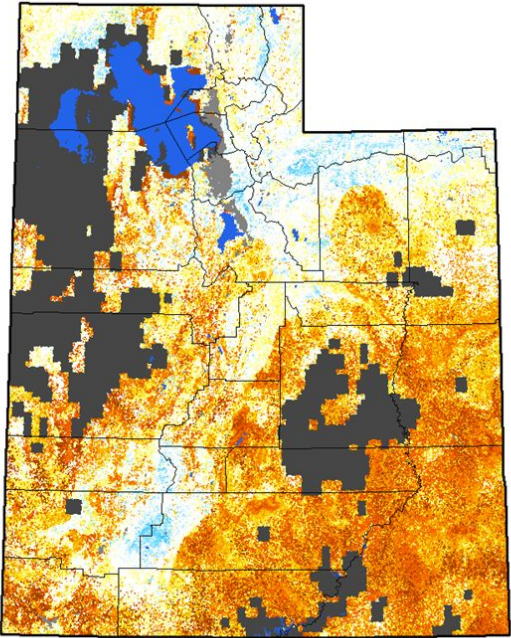
Presenter - Jon Meyer

Snow Cover Comparison

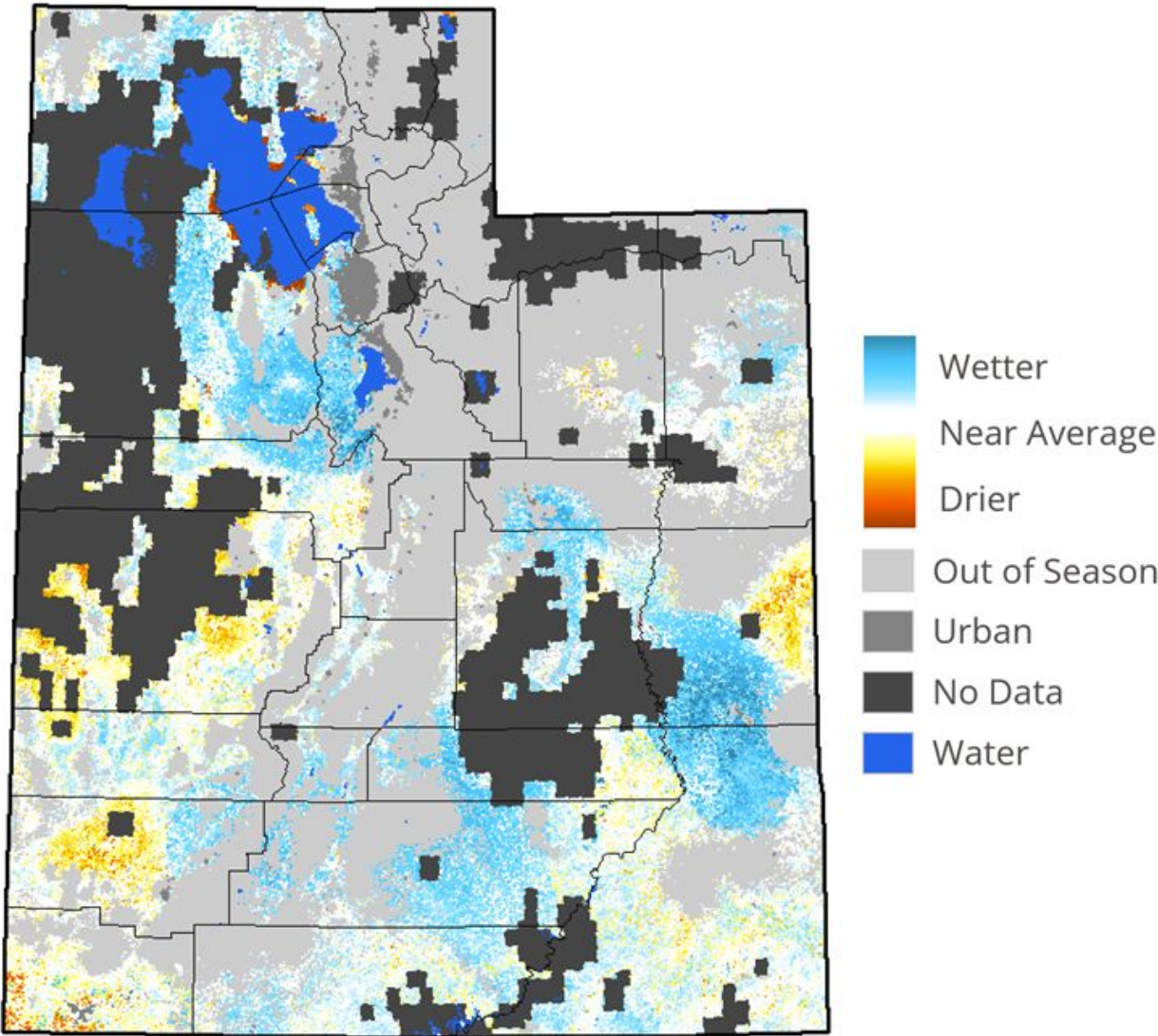


Agency - Utah Climate Center
Presenter - Jon Meyer

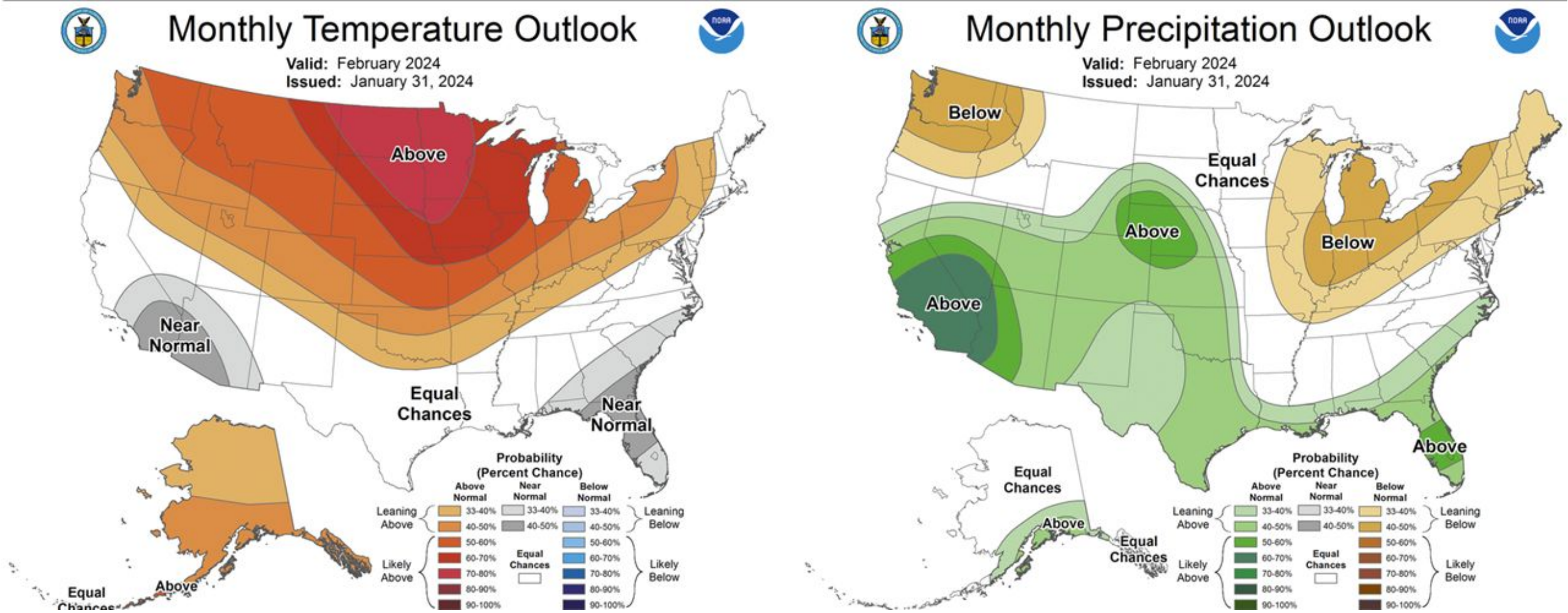
Short-Term Drought Pressure (Quick-DRI)



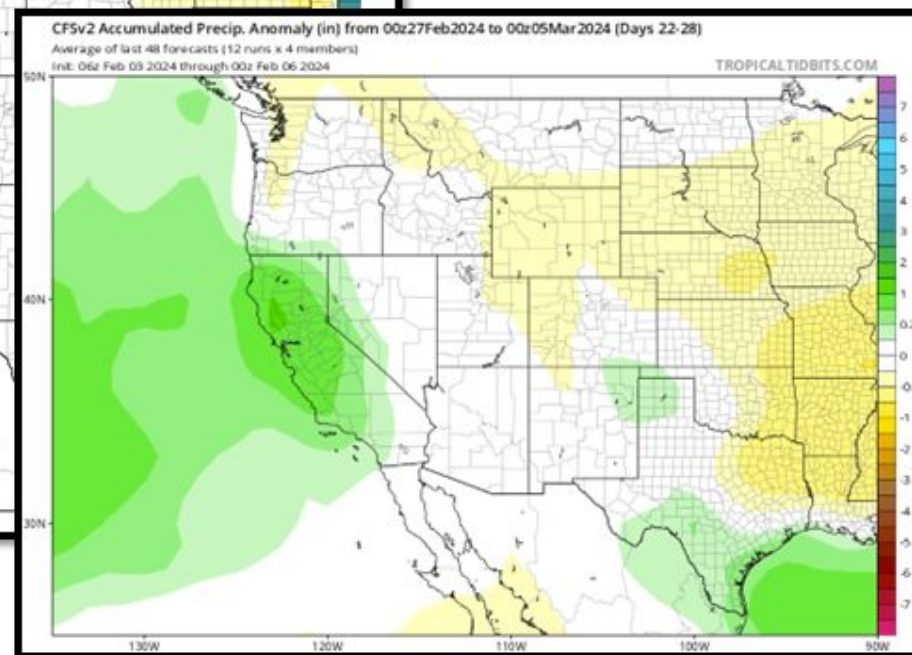
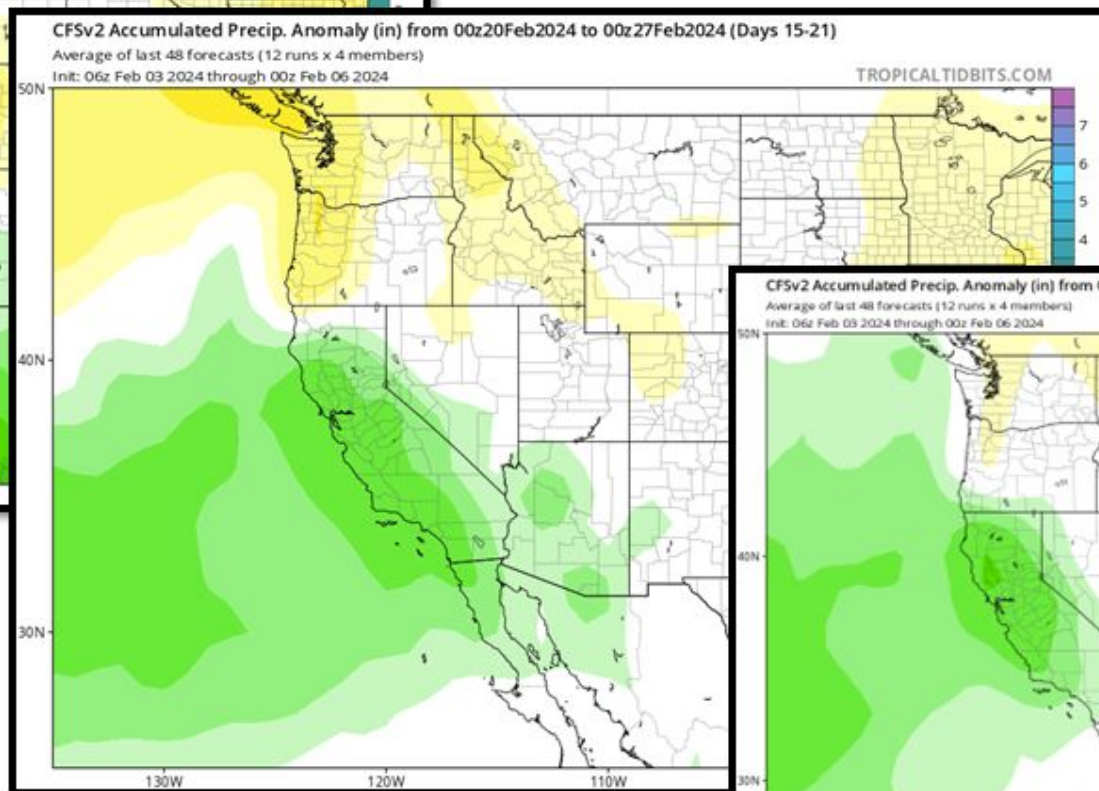
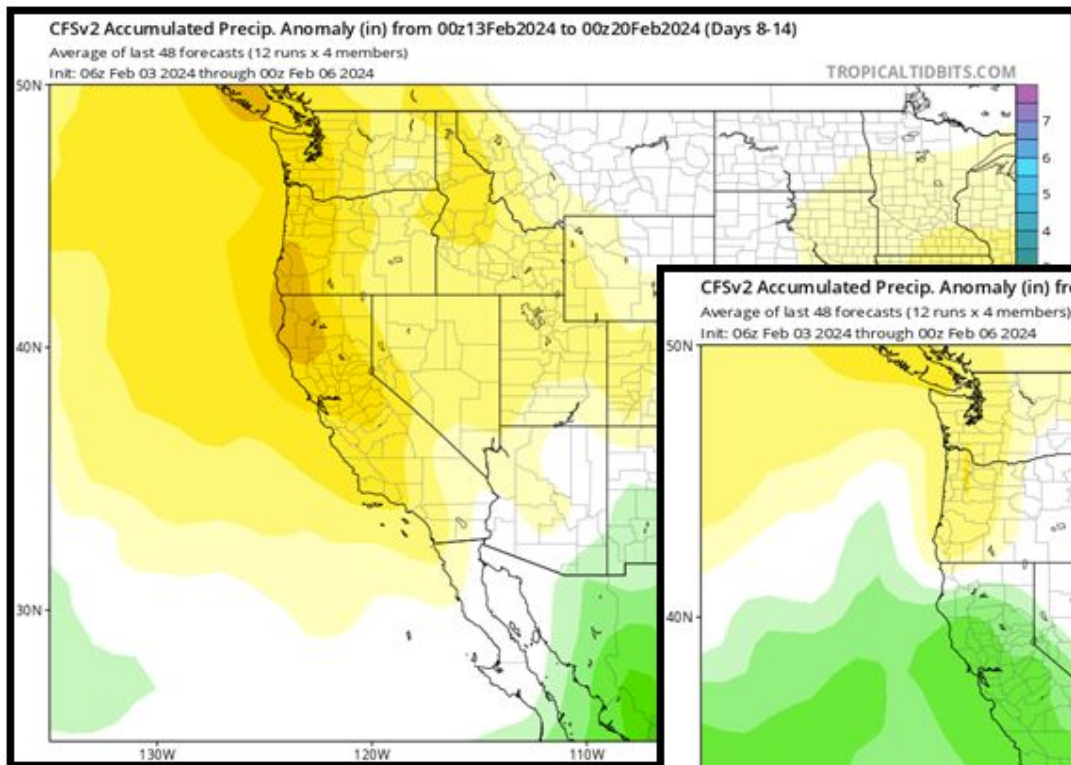
Agency - Utah Climate Center
Presenter - Jon Meyer



CPC One-Month Outlook



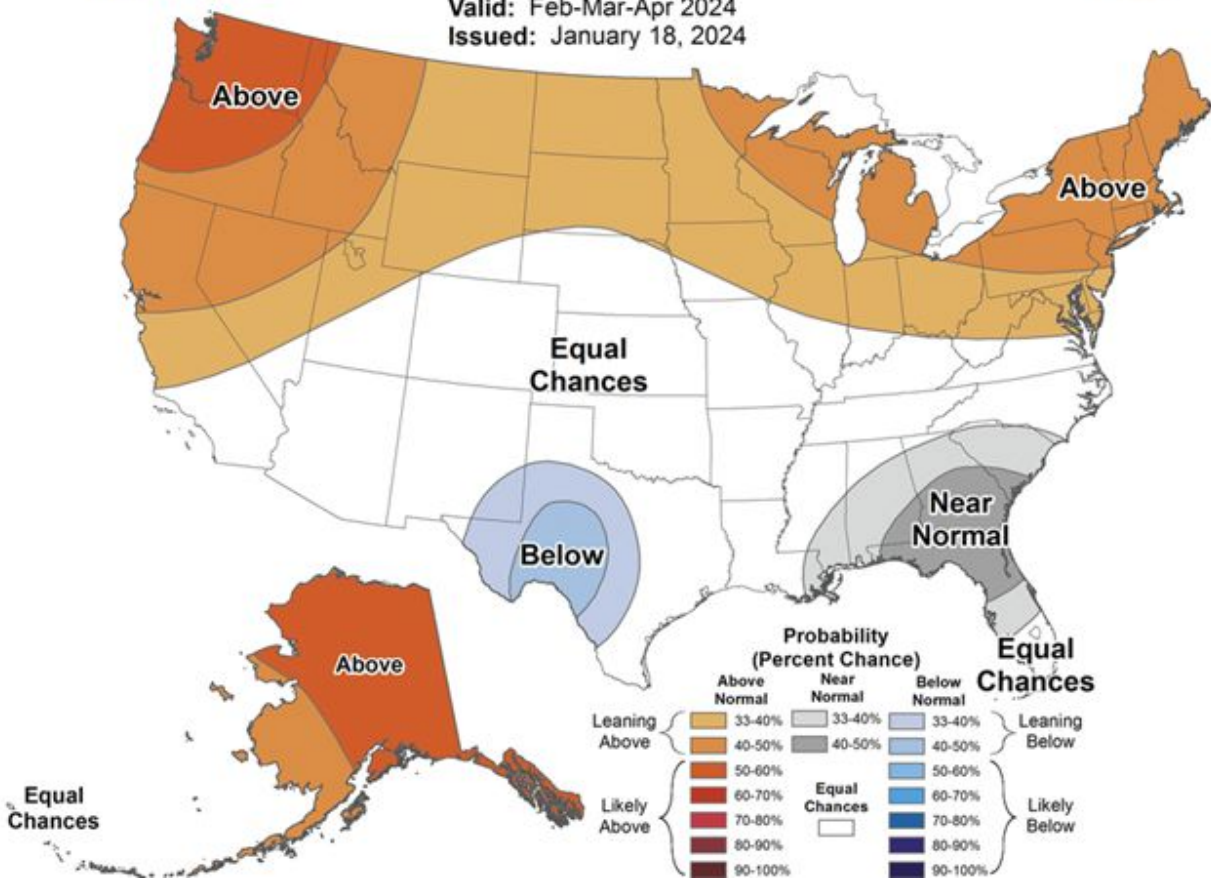
Sub-Seasonal (Week 2-4) Precip Outlooks



CPC Three-Month Outlook

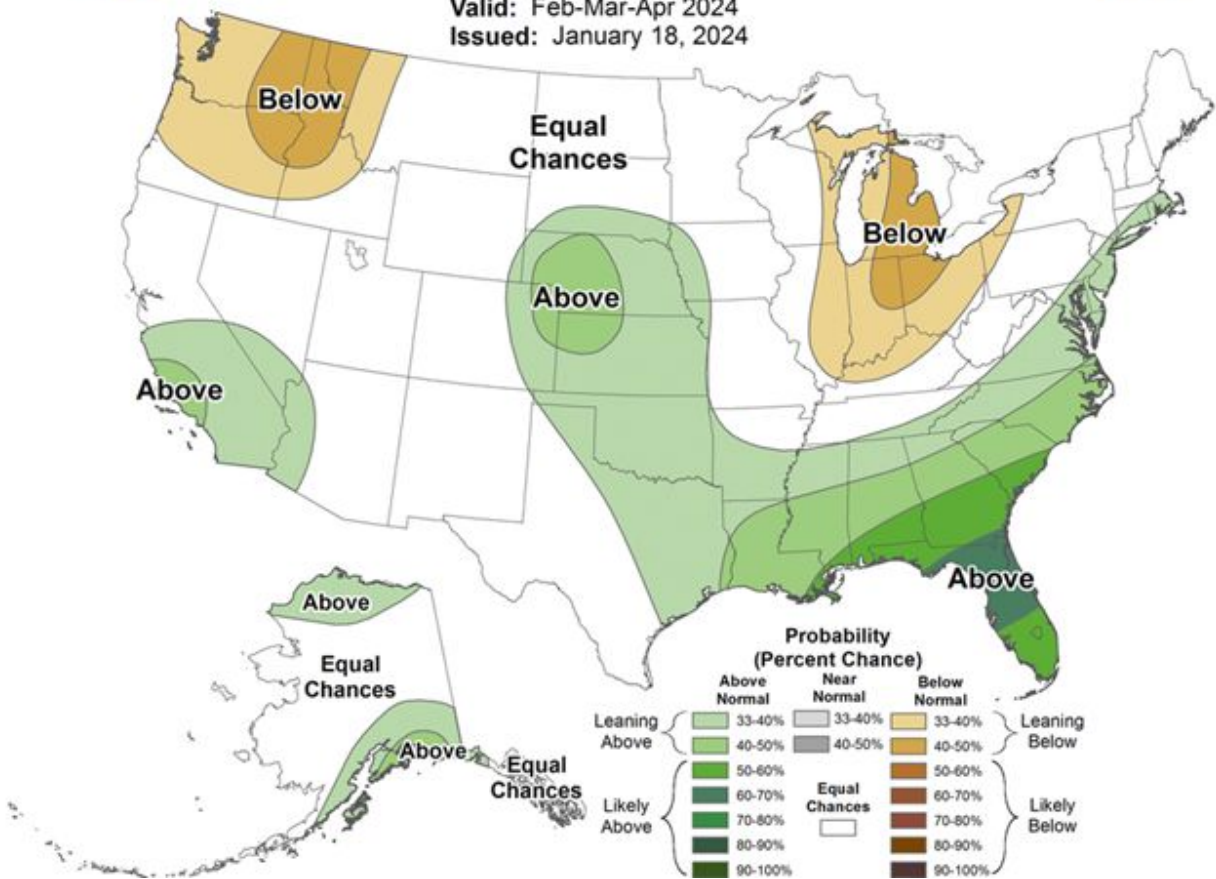
Seasonal Temperature Outlook

Valid: Feb-Mar-Apr 2024
Issued: January 18, 2024



Seasonal Precipitation Outlook

Valid: Feb-Mar-Apr 2024
Issued: January 18, 2024

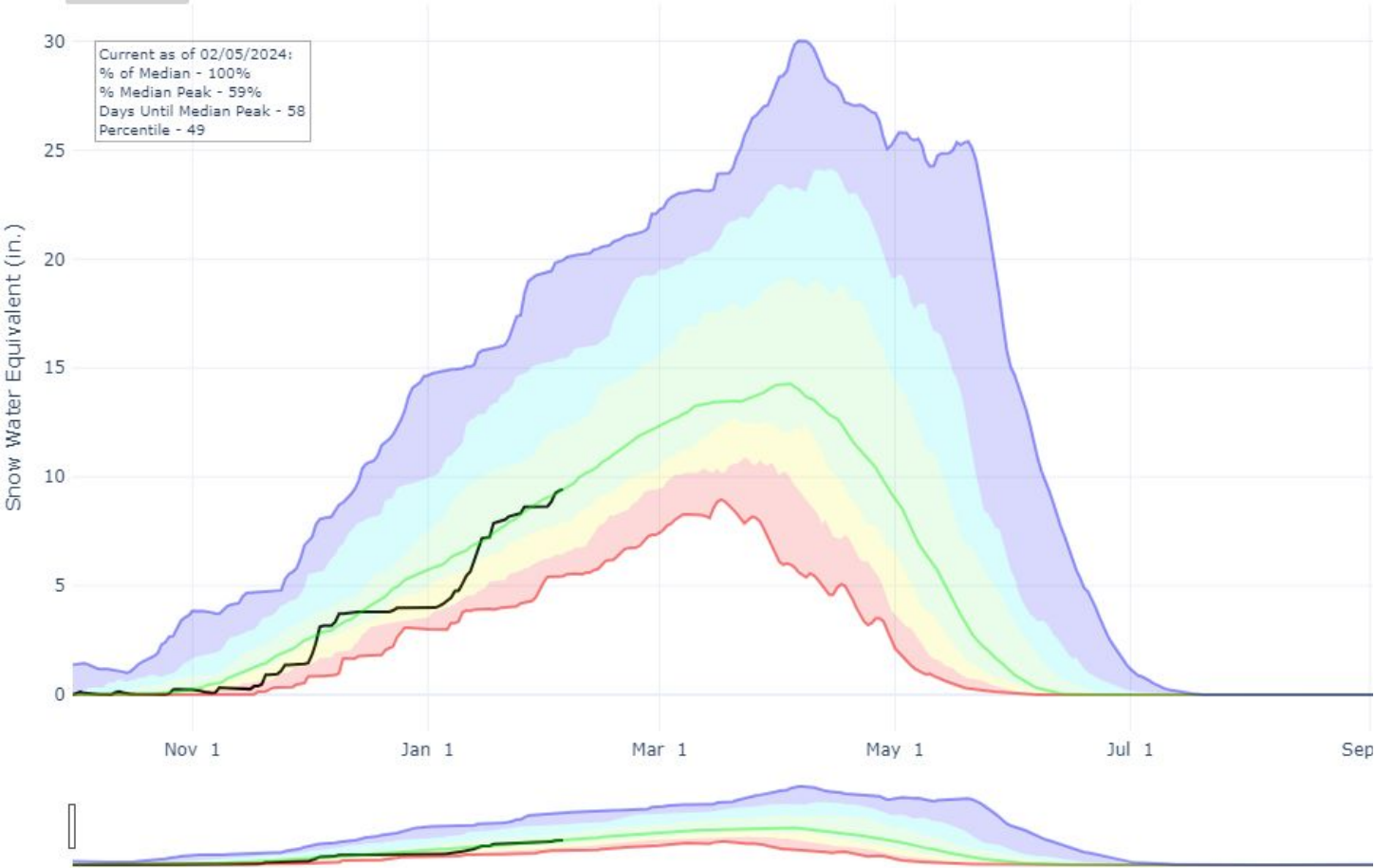


Snowpack

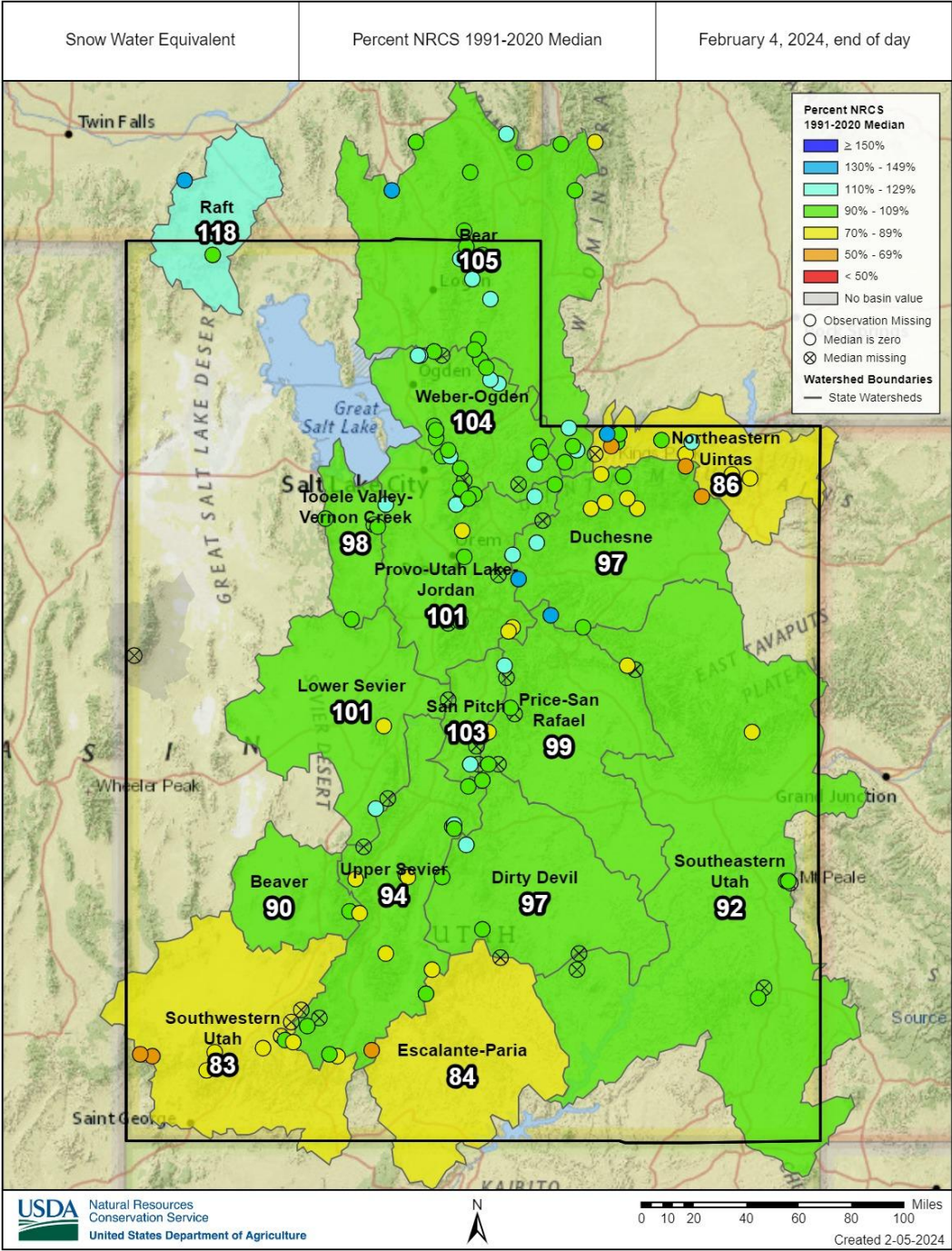
SNOW WATER EQUIVALENT IN STATE OF UTAH

Reset Range

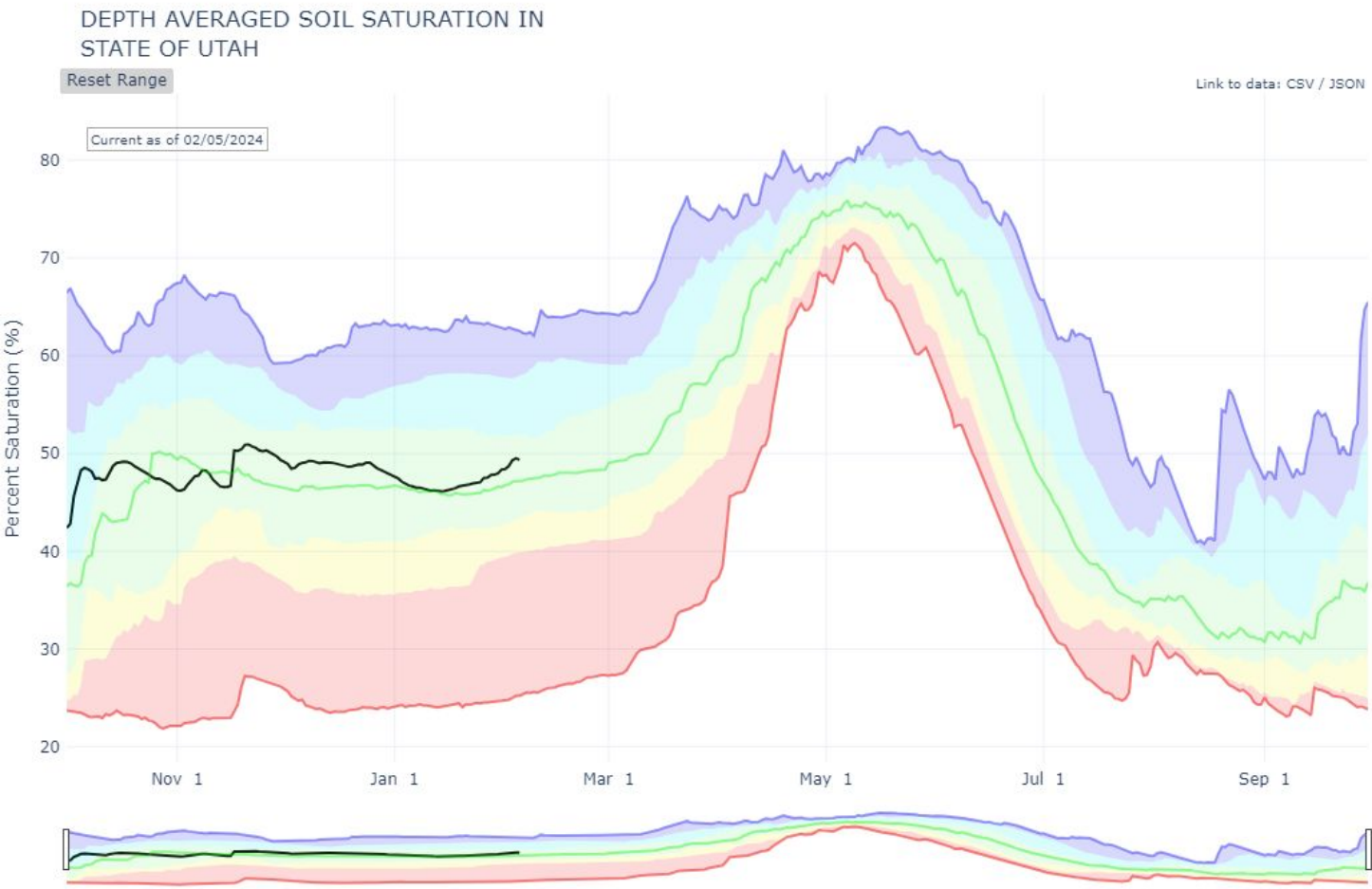
Current as of 02/05/2024:
% of Median - 100%
% Median Peak - 59%
Days Until Median Peak - 58
Percentile - 49



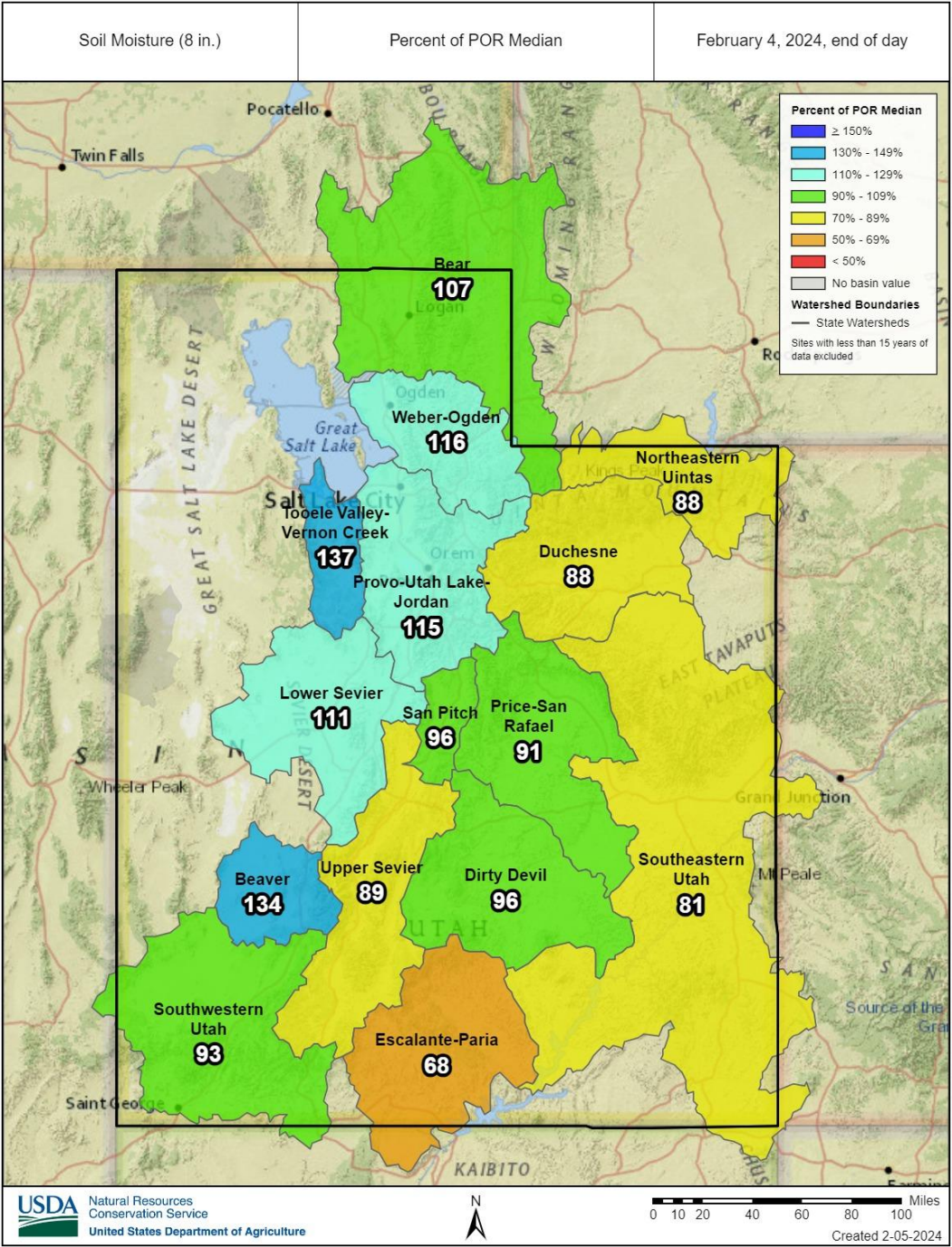
Agency - NRCS Snow Survey
Presenter - Jordan Clayton



Soil Moisture

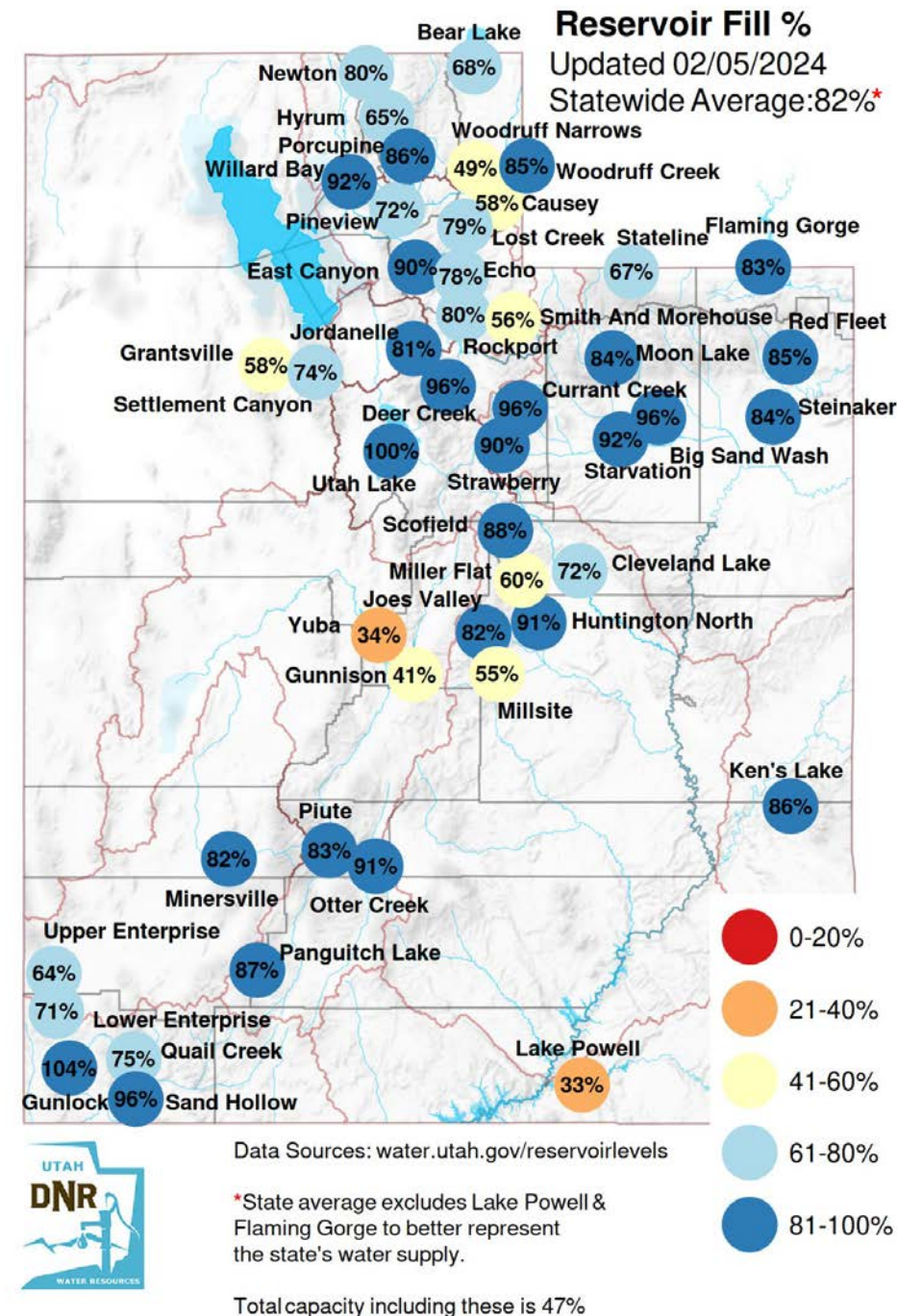


Agency - NRCS Snow Survey
Presenter - Jordan Clayton

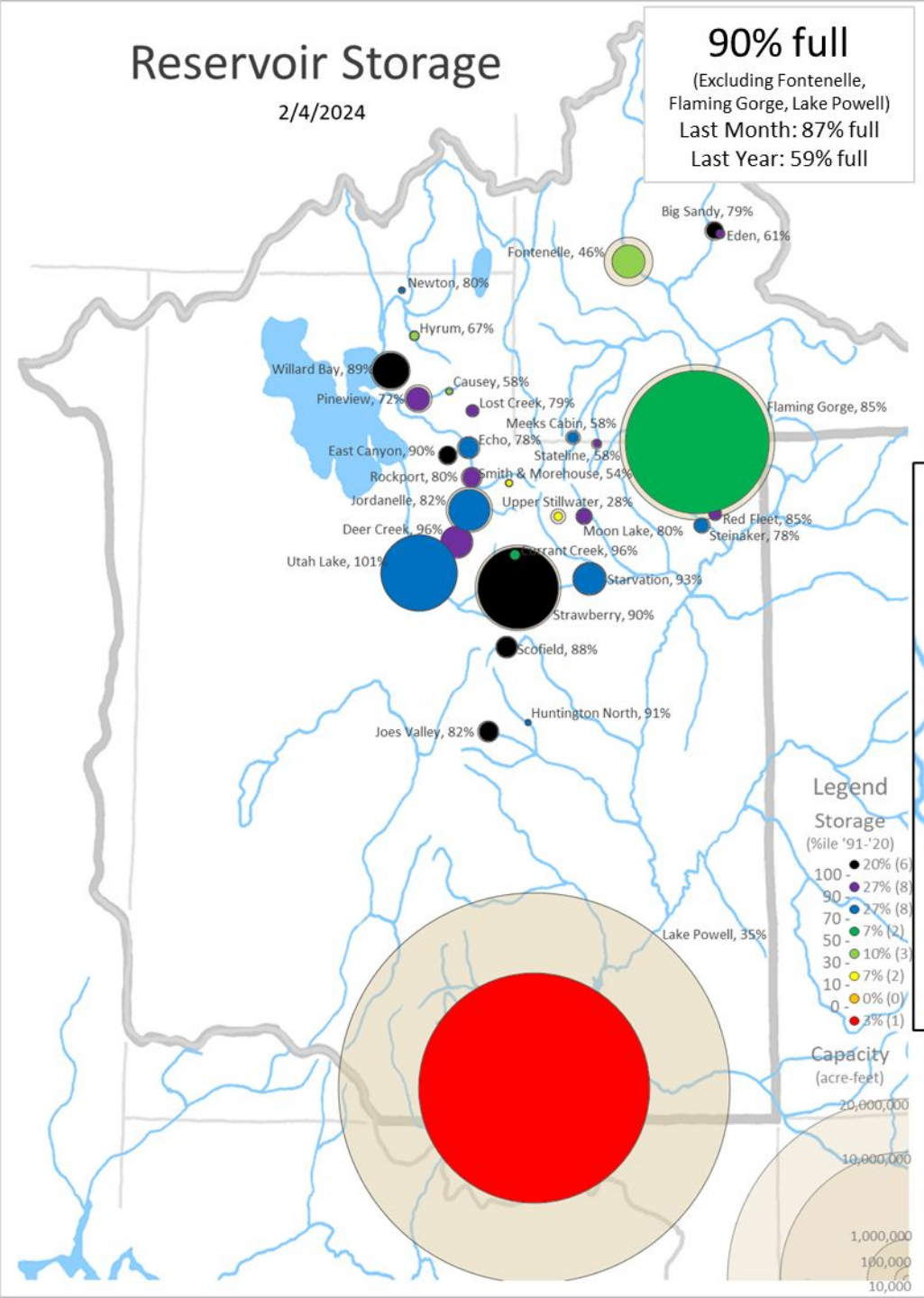


Last year 48.5% of capacity

Median 59.2% of capacity

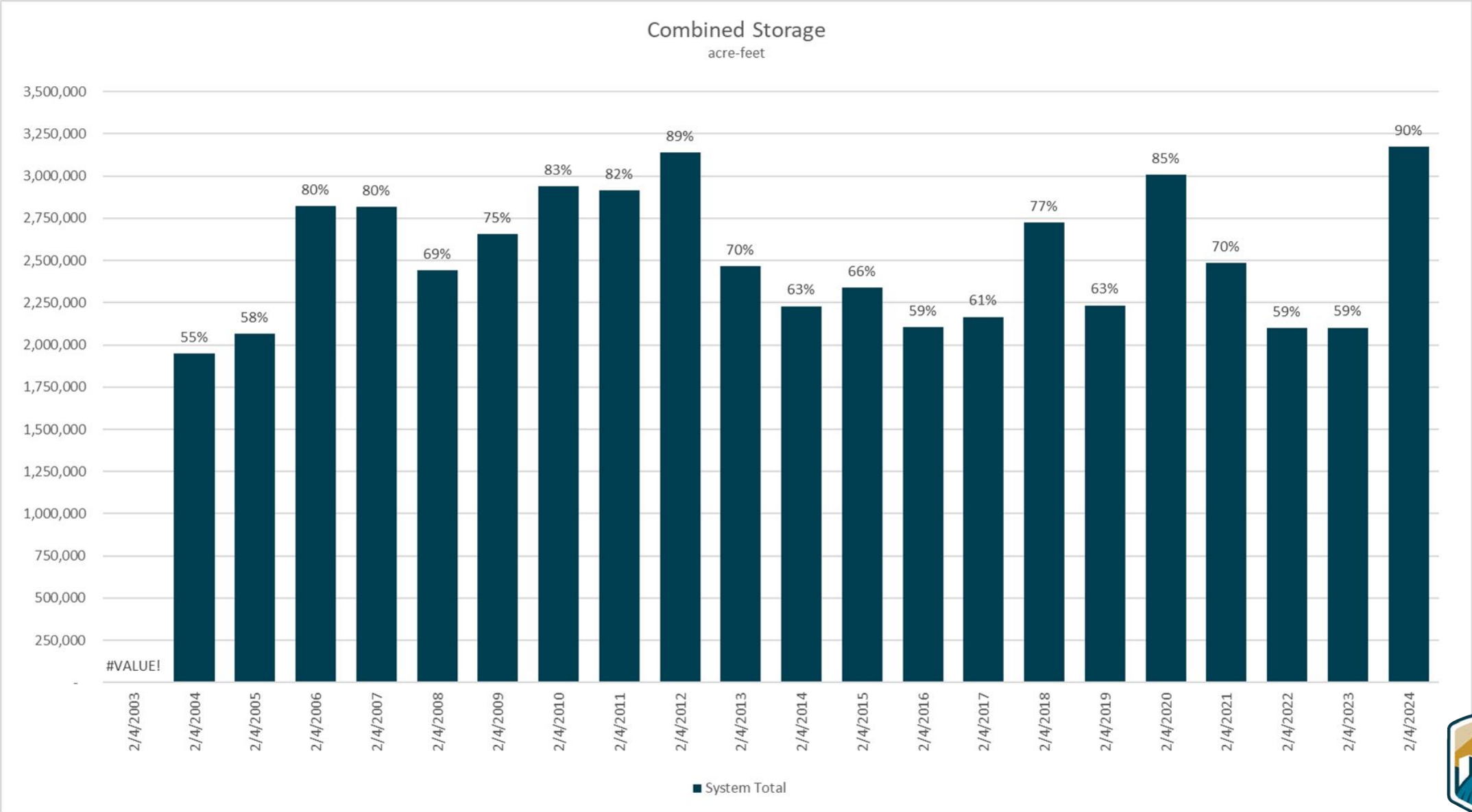


Reservoir Levels



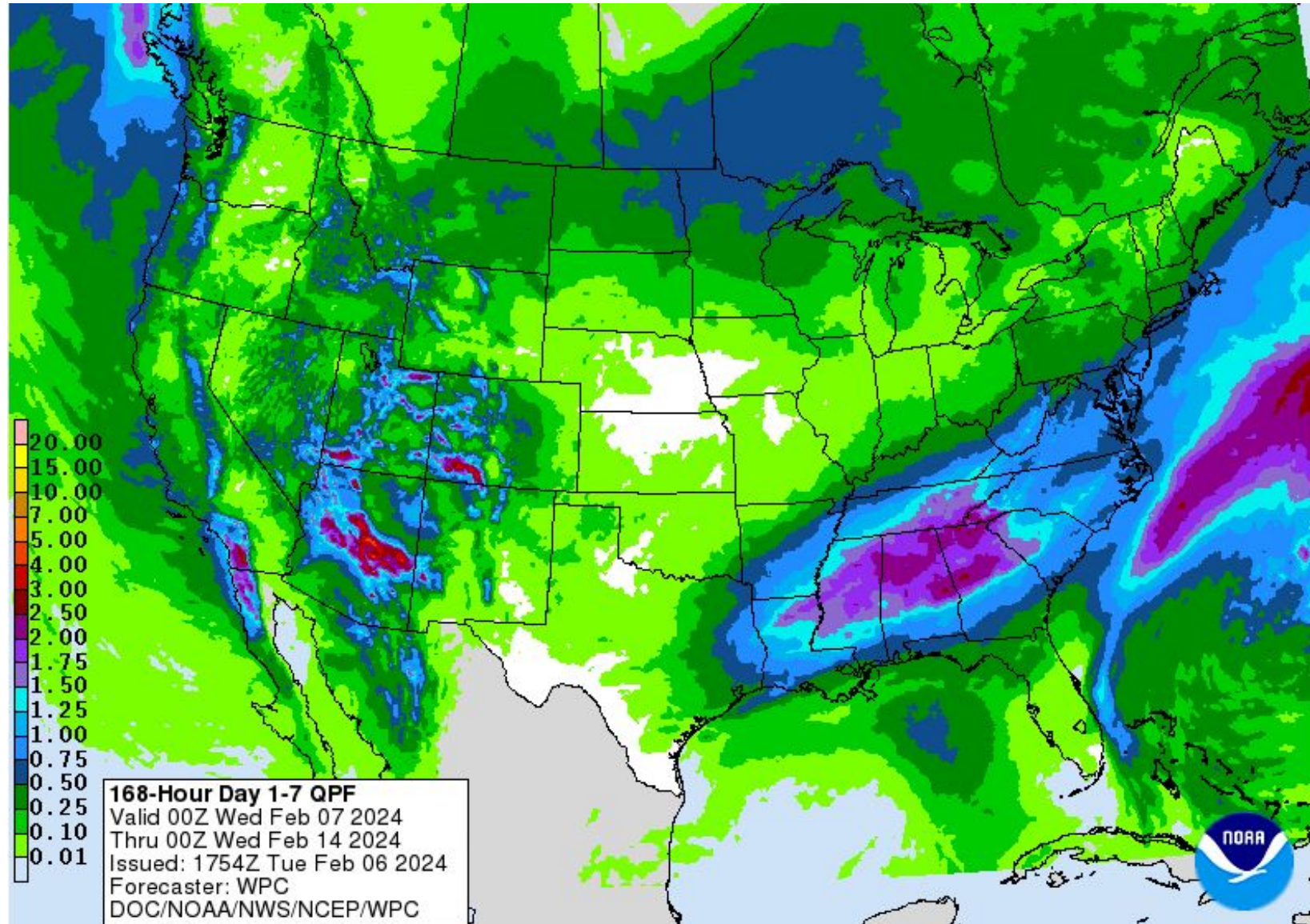
22/30 Reservoirs (73%)
above 70th Percentile

Reservoir Levels



Agency - BOR
Presenter - Gary Henrie

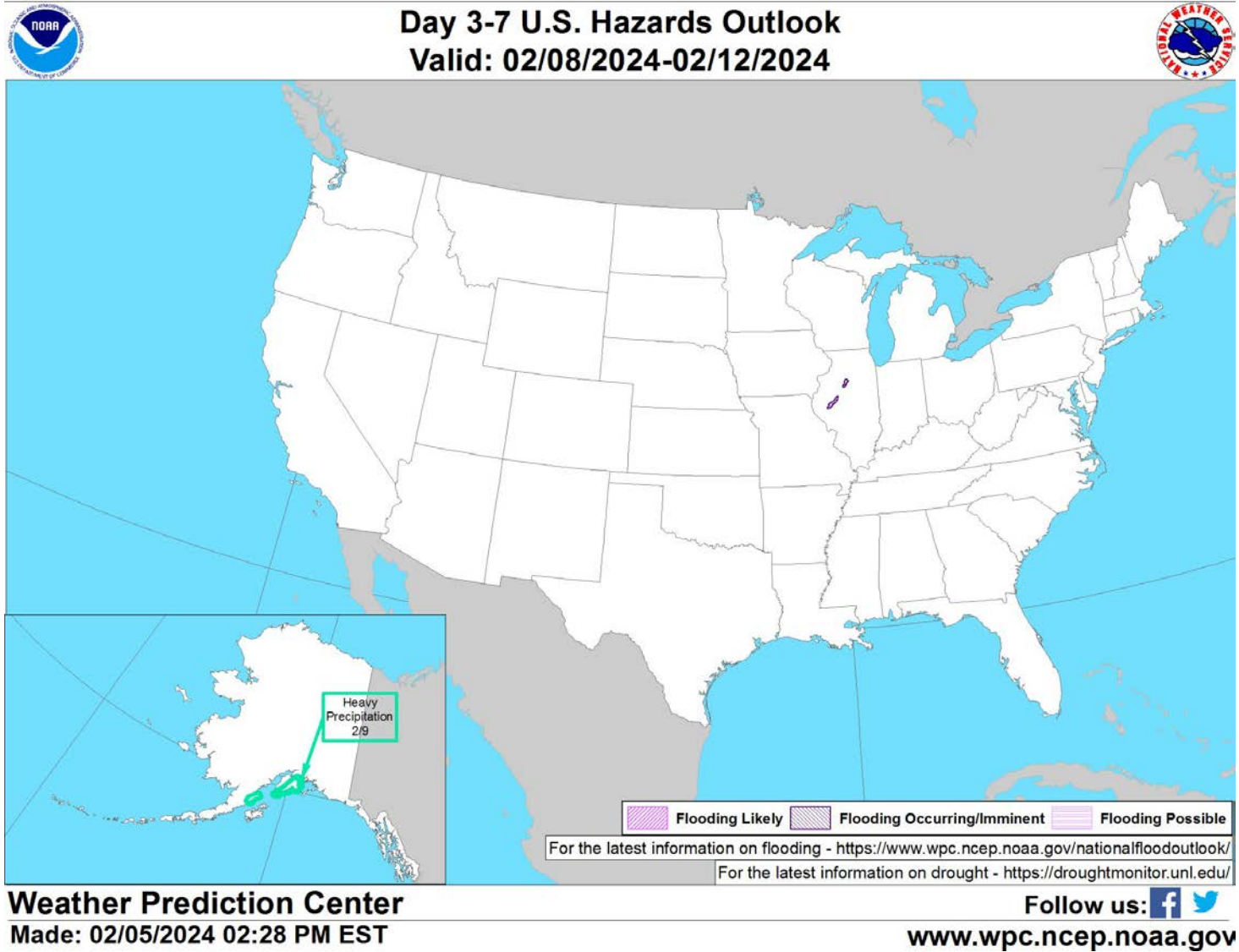
Weather Forecast Office Utah Day 1-7 Outlook



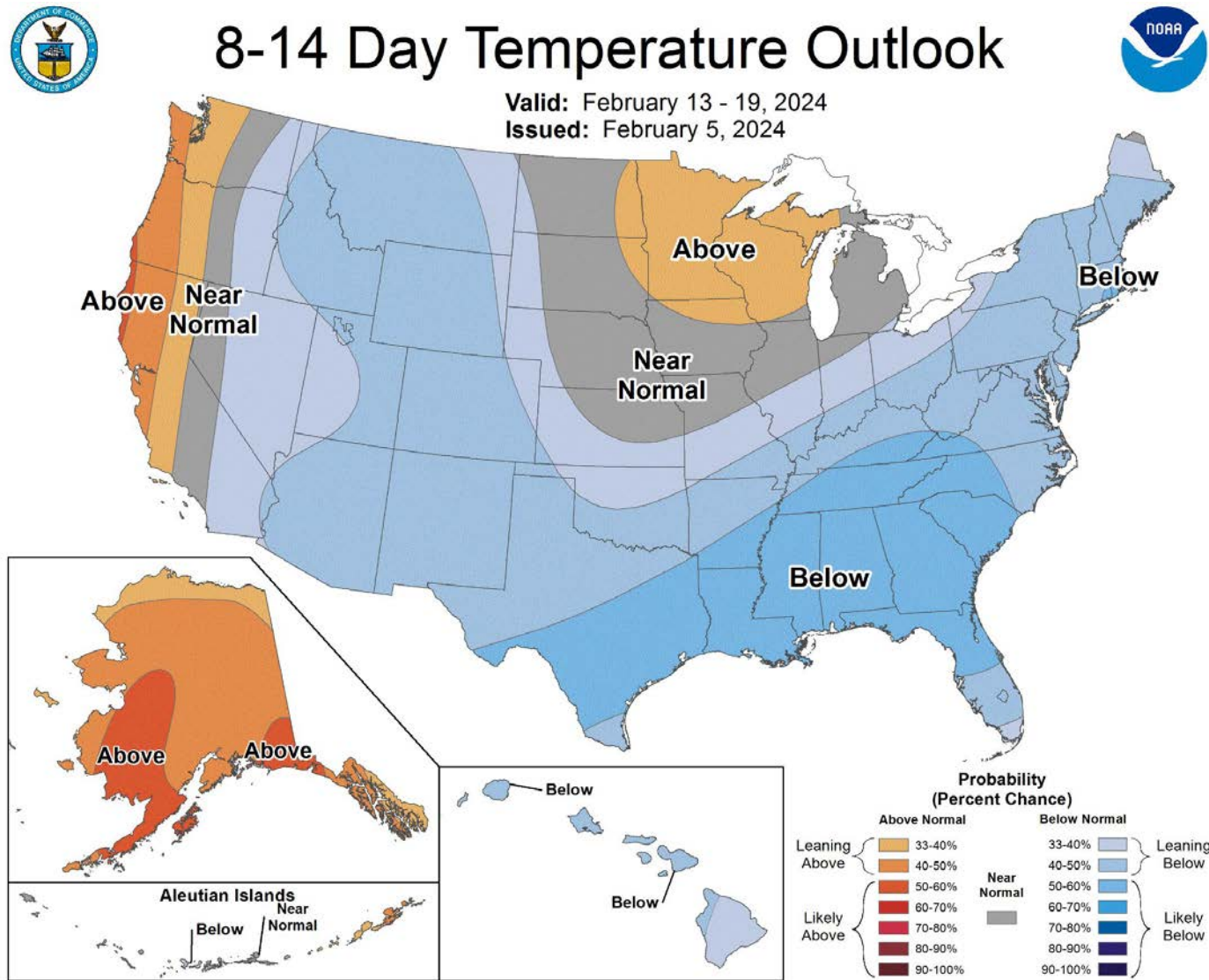
Agency - National Weather Service Weather Forecast Office

Presenter - Christine Kruse/Hayden Mahan

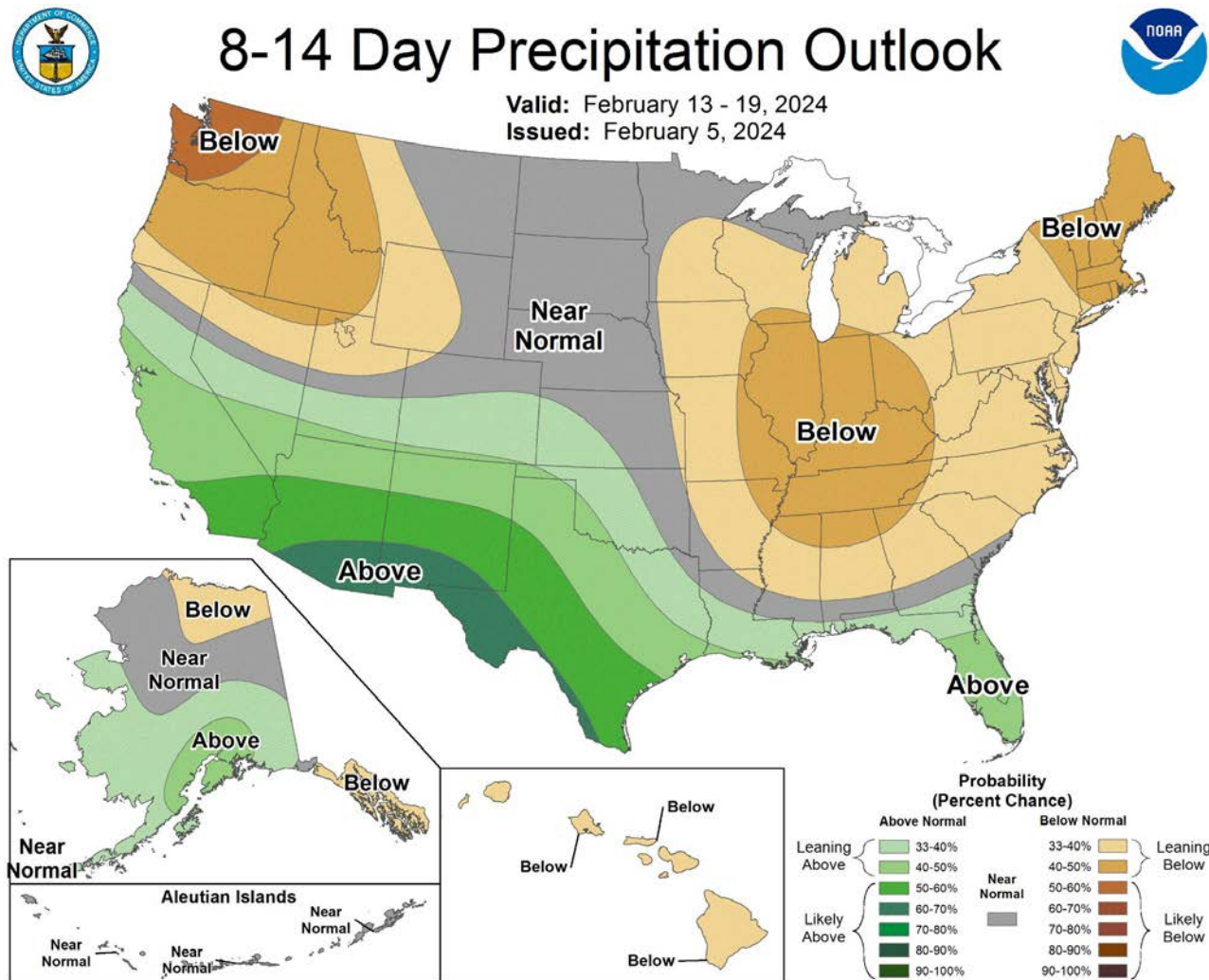
Weather Prediction Center U.S. Day 3-7 Hazards Outlook



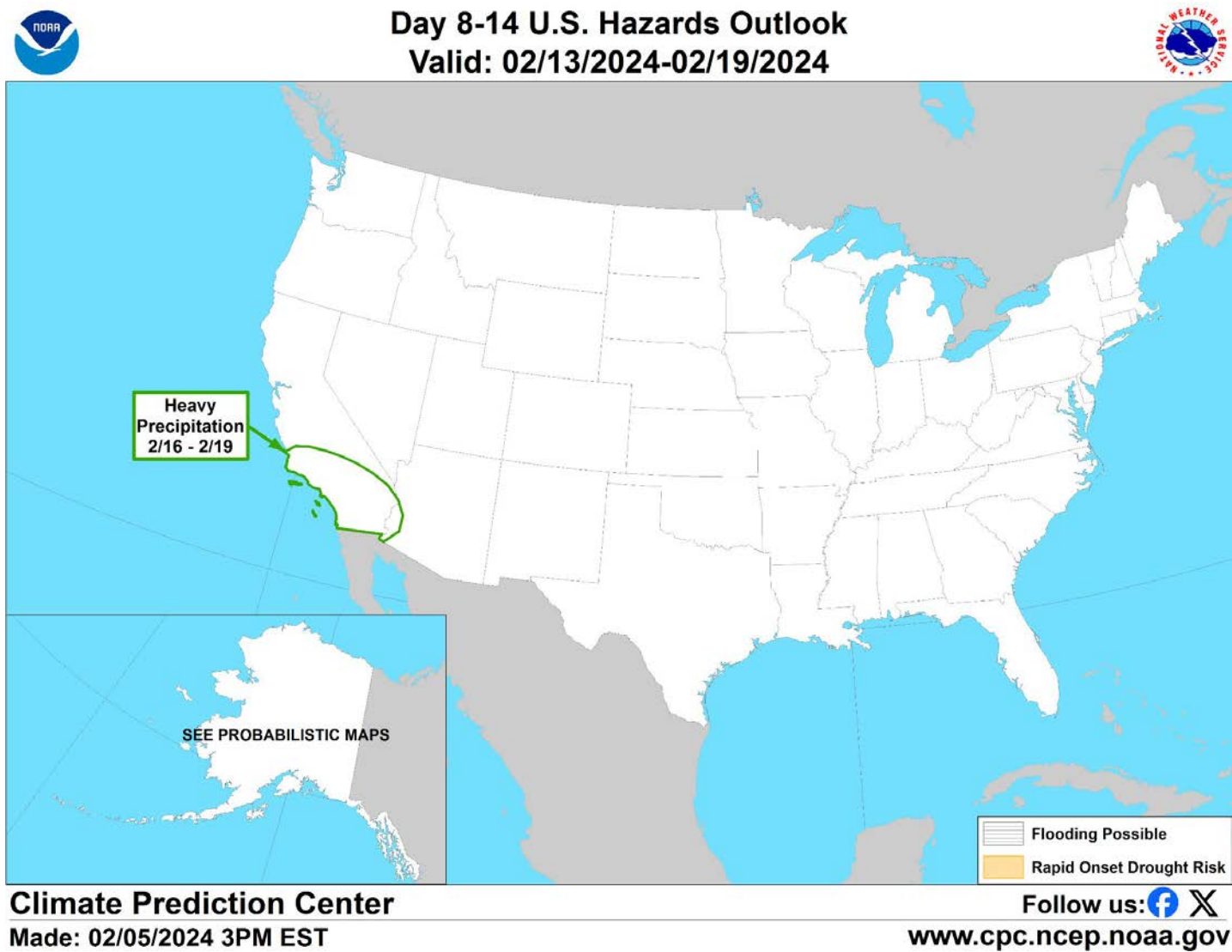
Climate Prediction Center 8 to 14 Day Outlooks - Temperature



Climate Prediction Center 8 to 14 Day Outlooks - Precipitation

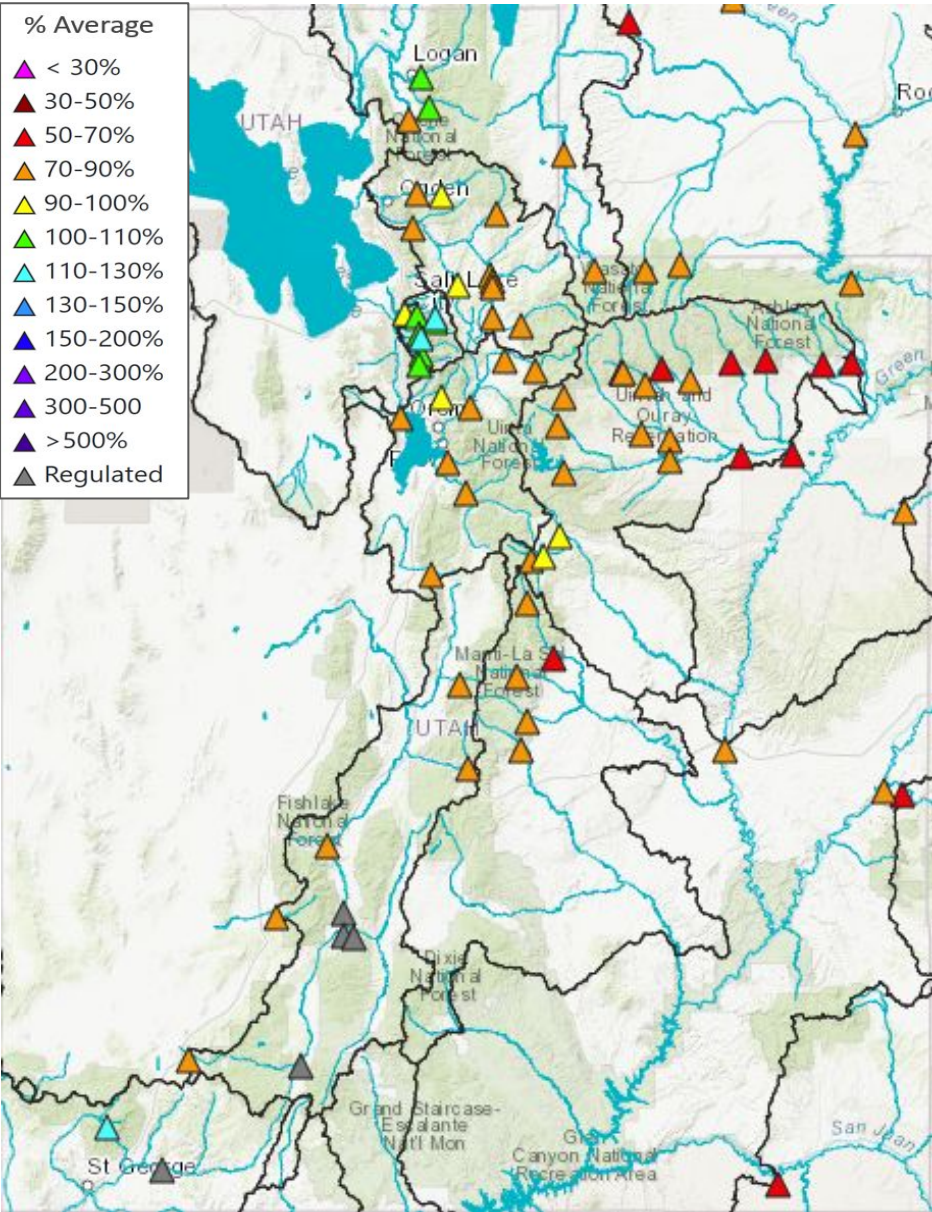


Climate Prediction Center U.S. Week-2 Hazards Outlook



Utah Water Supply Forecasts: Overview

Agency - CBRFC
Presenter - Trevor Grout
trevor.grout@noaa.gov



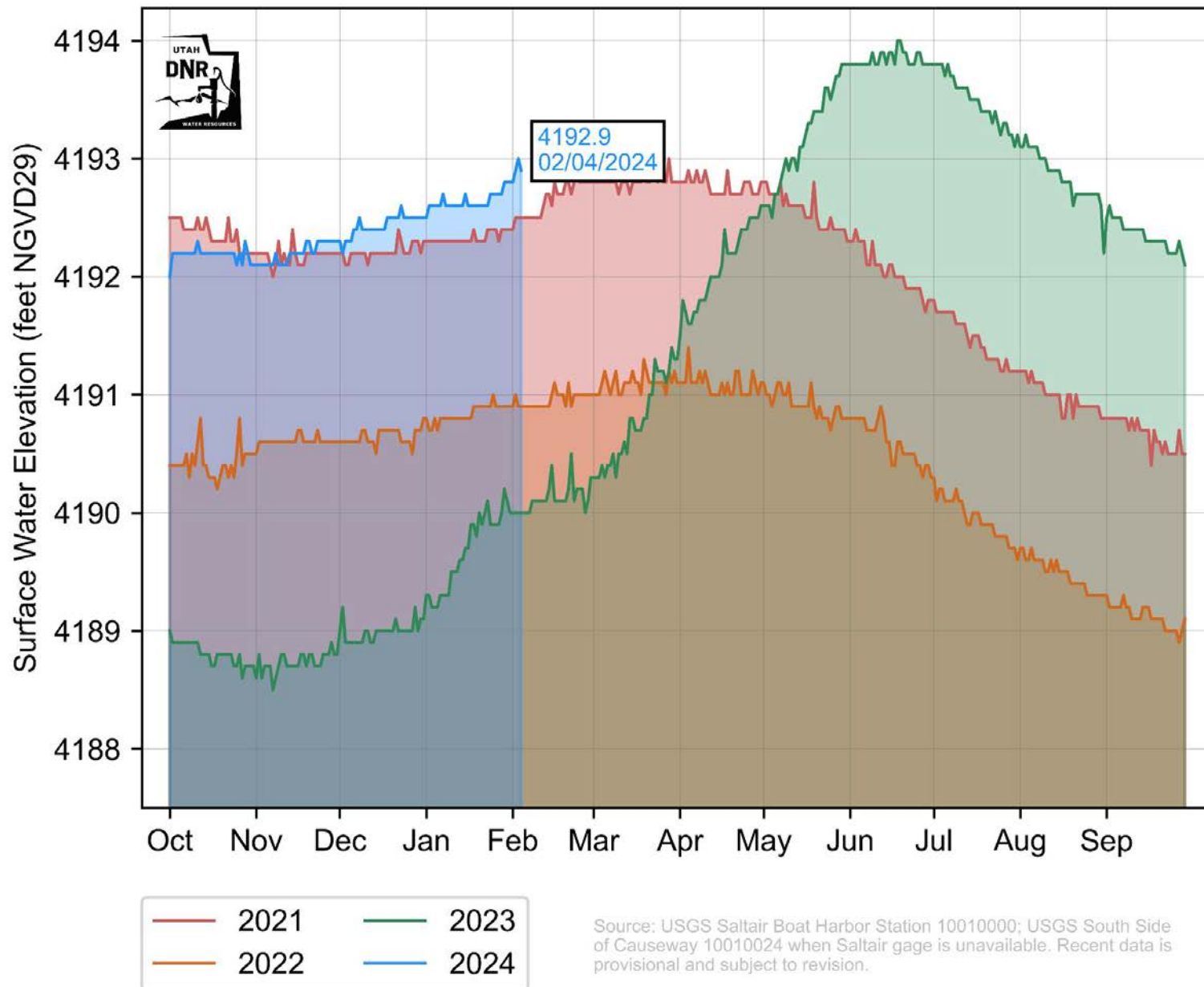
February 1 forecast for April-July volume is generally higher than January 1 forecast

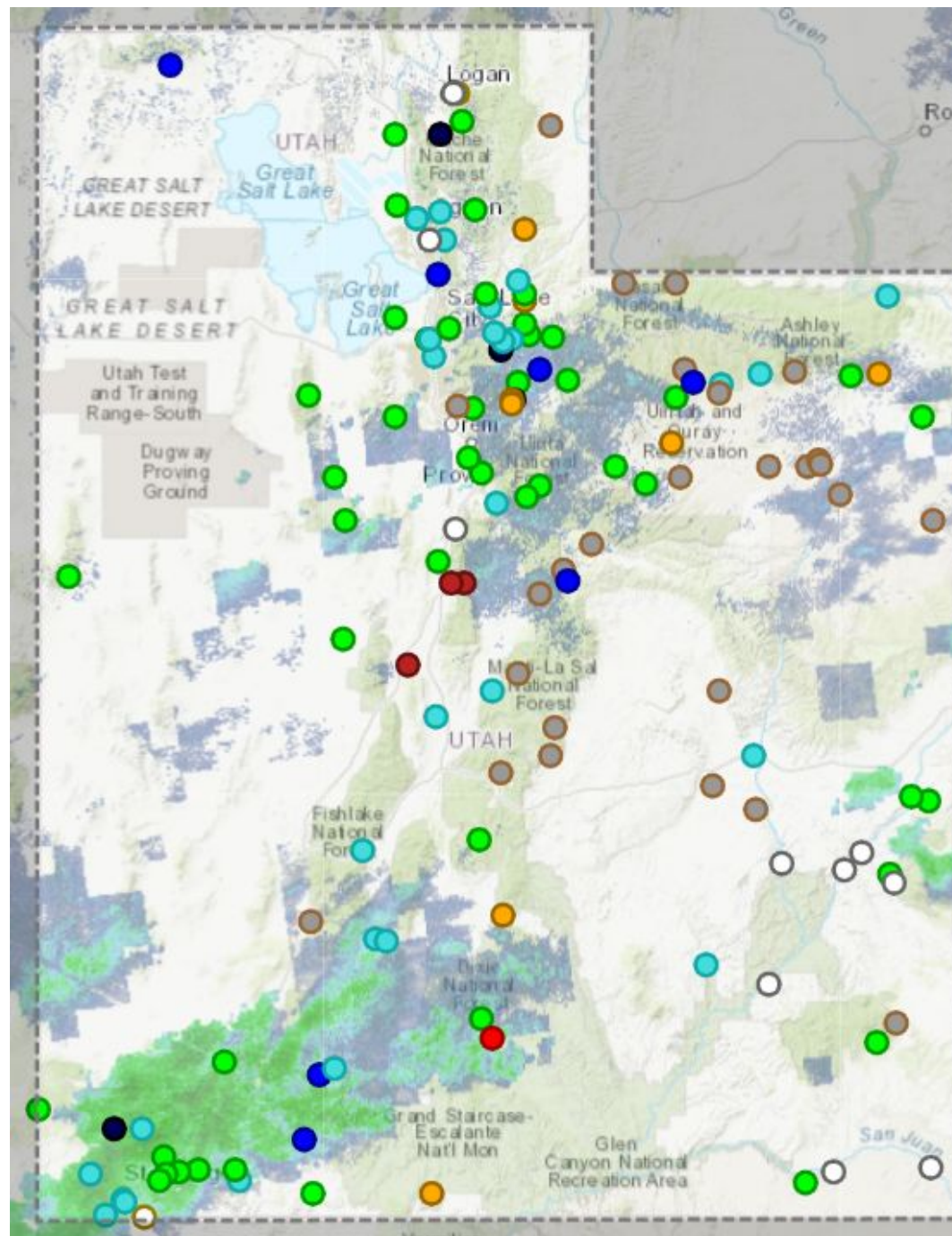
April - July forecast streamflow volumes are in percent of 1991-2020 average.

The timing and magnitude of spring runoff is ultimately a result of SWE conditions, spring weather, and antecedent soil moisture conditions

Watershed	Forecast Range (% Avg)	Median	Jan 2024 Median
Bear River Basin	80% - 105%	84%	80%
Weber River Basin	80% - 95%	87%	74%
Six Creeks Basin	100% - 110%	107%	92%
Provo River Basin	70% - 95%	88%	75%
Duchesne River Basin	55% - 95%	73%	62%
Virgin and Sevier River Basins	60% - 115%	83%	68%

Great Salt Lake South Arm Elevation





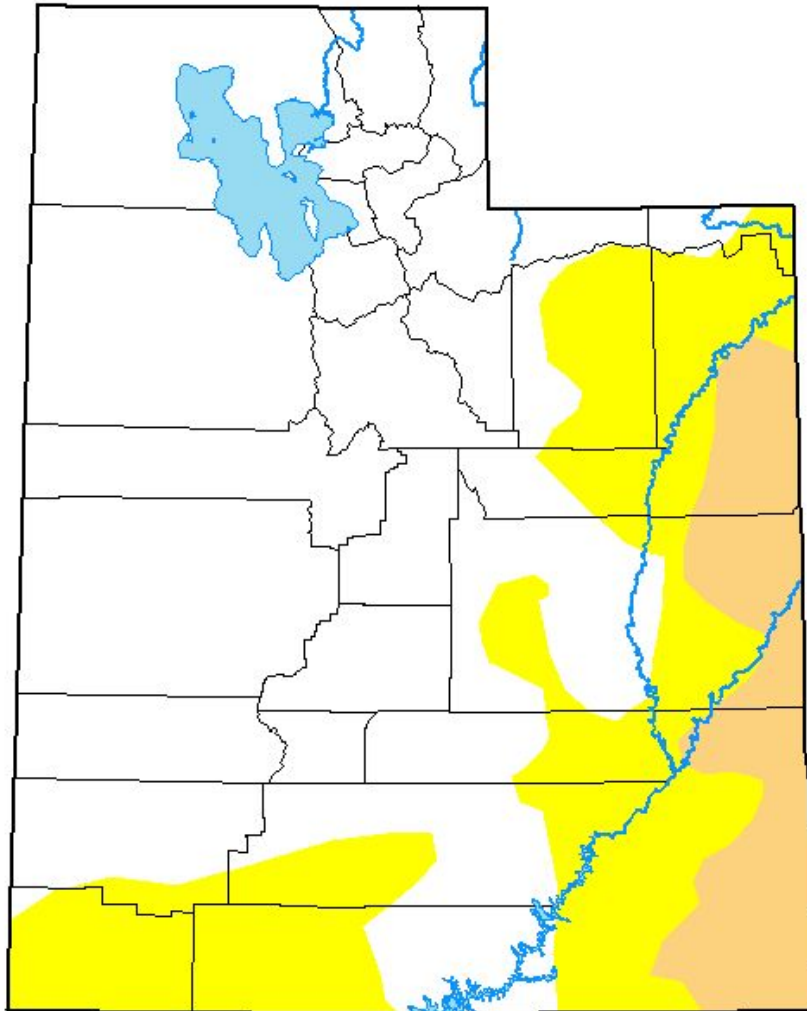
Streamflow: Status

- Above flood stage
- All-time high for this day 100th percentile (maximum)
- Much above normal >90th percentile
- Above normal 76th – 90th percentile
- Normal 25th – 75th percentile
- Below normal 10th – 24th percentile
- Much below normal <10th percentile
- All-time low for this day 0th percentile (minimum)
- Not flowing
- Not ranked
- Measurement flag
- Recent measurement unavailable

Comments: Marker color indicates the current streamflow condition. Categories are based on the percentile of existing streamflow records on this day-of-the-year. A streamgage is not ranked when there is less than 10 years of record or a current streamflow value is unavailable. Flood stages are maintained by the National Weather Service (NWS) and are not established for all USGS streamgages.

U.S. Drought Monitor Utah

January 30, 2024
Released Thursday, Feb. 1, 2024)
Valid 7 a.m. EST



Intensity:

- None
- D0 Abnormally Dry
- D1 Moderate Drought
- D2 Severe Drought
- D3 Extreme Drought
- D4 Exceptional Drought

The Drought Monitor focuses on broad-scale conditions. Local conditions may vary. For more information on the Drought Monitor, go to <https://droughtmonitor.unl.edu/About.aspx>

Author:

Brian Fuchs
National Drought Mitigation Center



droughtmonitor.unl.edu

To report on conditions between meetings:

Submit a report on CMOR drought website

Email Lhaskell@utah.gov

email drought@utah.gov