

**Lake Powell Pipeline Project
FERC Additional Information Request Schedule B – Item 28**

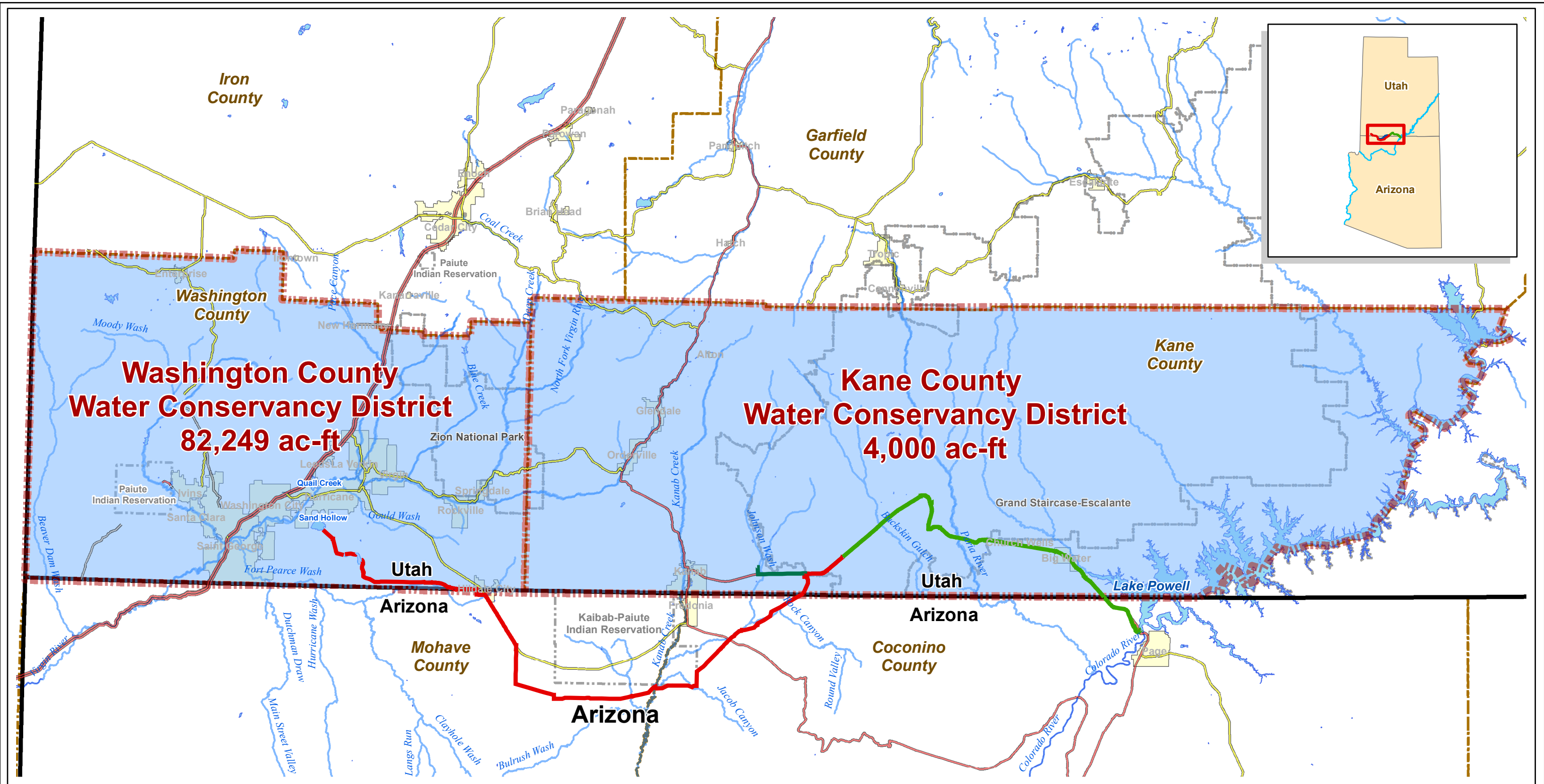
Exhibit E

General

28. Final Study Report 10, *Socioeconomics and Water Resources Economics*, filed with the license application refers to figure 3-1 which should depict the project alignment alternatives and help define the socioeconomic study area. However, figure 3-1 is not included in the report although there is a placeholder for this figure on page 3-3 of the report. Please provide this figure so that we can fully evaluate resources within the study area potentially affected by the project.

UBWR Response:

Figure 3-1 in Final Study Report 10, *Socioeconomics and Water Resource Economics*, is attached as a PDF file. This figure also is included as an individual PDF file on the DVD filed as part of the UBWR response to FERC Schedule B, Additional Information Request Item 10.



- | | | | |
|-----------------------------------|-----------------------------|------------|------------------------|
| Water Conveyance System | Water Conservancy Districts | Interstate | National Park/Monument |
| Hydro System - South Alternative | State Boundaries | US Highway | Tribal Lands |
| KCWCD System | Lakes/Reservoirs | ST Highway | County Boundaries |
| Hurricane Cliffs Forebay/Afterbay | Major Rivers & Streams | Hwy | Cities |



FERC Project Number:
 12966-001
BLM Serial Numbers:
 AZA-34941
 UTU-85472

Figure 3-1
 Lake Powell Pipeline
 Participating Water Conservancy
 Districts Service Areas

Spatial Reference: UTM Zone 12N,
 NAD-83

